

Dell Inspiron One 2330

Owner's Manual

Computer model: Inspiron One 2330

Regulatory model: W05C

Regulatory type: W05C001



Notes, Cautions, and Warnings



NOTE: A NOTE indicates important information that helps you make better use of your computer.



CAUTION: A CAUTION indicates potential damage to hardware or loss of data if instructions are not followed.



WARNING: A WARNING indicates a potential for property damage, personal injury, or death.

Information in this document is subject to change without notice.

© 2012 Dell Inc. All rights reserved.

Reproduction of these materials in any manner whatsoever without the written permission of Dell Inc. is strictly forbidden.

Trademarks used in this text: Dell™, the DELL logo, and Inspiron™ are trademarks of Dell Inc.; Microsoft®, Windows®, and the Windows start button logo  are either trademarks or registered trademarks of Microsoft corporation in the United States and/or other countries; Bluetooth® is a registered trademark owned by Bluetooth SIG, Inc. and is used by Dell under license; Intel® and Intel SpeedStep® are registered trademarks of Intel Corporation in the U.S. and/or other countries.

Other trademarks and trade names may be used in this document to refer to either the entities claiming the marks and names or their products. Dell Inc. disclaims any proprietary interest in trademarks and trade names other than its own.

Contents

1	Before You Begin	11
	Turn Off Your Computer and Connected Devices	11
	Safety Instructions.	12
	Recommended Tools.	12
2	After Working Inside Your Computer.	13
3	Technical Overview	15
	Inside View of Your Computer.	16
	System Board Components	17
4	Stand	19
	Removing the Stand	19
	Replacing the Stand	21
5	Back Cover	23
	Removing the Back Cover	23
	Replacing the Back Cover.	24

6	B-CAS Card	25
	Removing the B-CAS Card	25
	Replacing the B-CAS card	27
7	Converter Board	29
	Removing the Converter Board	29
	Replacing the Converter Board	31
8	Power-Button Board	33
	Removing the Power-Button Board	33
	Replacing the Power-Button Board	34
9	Memory Module(s).	35
	Removing the Memory Module(s)	35
	Replacing the Memory Module(s)	37
10	Optical Drive	39
	Removing the Optical Drive	39
	Replacing the Optical Drive	42

11	VESA-Mount Bracket	43
	Removing the VESA-Mount Bracket	43
	Replacing the VESA-Mount Bracket	44
12	Hard Drive	45
	Removing the Hard Drive	45
	Replacing the Hard Drive	48
13	System-Board Shield	49
	Removing the System-Board Shield	49
	Replacing the System-Board Shield	51
14	TV Tuner Card	53
	Removing the TV Tuner Card	53
	Replacing the TV Tuner Card	56
15	Wireless Mini-Card	57
	Removing the Wireless Mini-Card	57
	Replacing the Wireless Mini-Card	59

16	Speakers	61
	Removing the Speakers	61
	Replacing the Speakers	63
17	Processor Heat-Sink	65
	Removing the Processor Heat-Sink	65
	Replacing the Processor Heat-Sink	67
18	Processor Heat-Sink Fan	69
	Removing the Processor Heat-Sink Fan	69
	Replacing the Processor Heat-Sink Fan	71
19	Processor	73
	Removing the Processor	73
	Replacing the Processor	75
20	Power-Supply Fan Bracket	77
	Removing the Power-Supply Fan Bracket	77
	Replacing the Power-Supply Fan Bracket	79

21 I/O Cover	81
Removing the I/O Cover	81
Replacing the I/O Cover	83
22 I/O Board Shield	85
Removing the I/O Board Shield	85
Replacing the I/O Board Shield	88
23 Power-Supply Unit.	89
Removing the Power-Supply Unit	89
Replacing the Power-Supply Unit.	91
24 Power-Supply Fan	93
Removing the Power-Supply Fan	93
Replacing the Power-Supply Fan	95
25 TV-In Port	97
Removing the TV-In Port.	97
Replacing the TV-In Port.	99


26	Infrared Port	101
	Removing the Infrared Port	101
	Replacing the Infrared Port	103
27	I/O Board	105
	Removing the I/O Board	105
	Replacing the I/O Board	108
28	Coin-Cell Battery	109
	Removing the Coin-Cell Battery	109
	Replacing the Coin-Cell Battery	111
29	System Board	113
	Removing the System Board	113
	Replacing the System Board	115
	Entering the Service Tag in the BIOS	116
30	Antenna Module(s)	117
	Removing the Antenna Module(s)	117
	Replacing the Antenna Module(s)	120

31	Display Panel	123
	Removing the Display Panel	123
	Replacing the Display Panel	128
32	Infrared Sensor	131
	Removing the Infrared Sensor	131
	Replacing the Infrared Sensor	134
33	Camera Module	137
	Removing the Camera Module	137
	Replacing the Camera Module	140
34	System Setup	143
	Overview	143
	Entering System Setup	143
	Clearing Forgotten Passwords	152
	Clearing CMOS Settings	154
35	Flashing the BIOS	157


Before You Begin

Turn Off Your Computer and Connected Devices

 **CAUTION:** To avoid losing data, save and close all open files and exit all open programs before you turn off your computer.

- 1 Save and close all open files and exit all open programs.
- 2 Click Start  and click Shut Down.









Microsoft Windows shuts down and then the computer turns off.

 **NOTE:** If you are using a different operating system, see the documentation of your operating system for shut-down instructions.

- 3 Disconnect your computer and all attached devices from the electrical outlets.
- 4 Disconnect all telephone cables, network cables, and attached devices from your computer.
- 5 After the computer is unplugged, press and hold the power button for about 5 seconds to ground the system board.

Safety Instructions

Use the following safety guidelines to protect your computer from potential damage and ensure your personal safety.

-  **WARNING:** Before working inside your computer, read the safety information that shipped with your computer. For additional safety best practices information, see the Regulatory Compliance Homepage at dell.com/regulatory_compliance.
-  **WARNING:** Disconnect all power sources before opening the computer cover or panels. After you finish working inside the computer, replace all covers, panels, and screws before connecting to the power source.
-  **CAUTION:** To avoid damaging the computer, ensure that the work surface is flat and clean.
-  **CAUTION:** To avoid damaging the components and cards, handle them by their edges and avoid touching pins and contacts.
-  **CAUTION:** Only a certified service technician is authorized to remove the computer cover and access any of the components inside the computer. See the safety instructions for complete information about safety precautions, working inside your computer, and protecting against electrostatic discharge.
-  **CAUTION:** Before touching anything inside your computer, ground yourself by touching an unpainted metal surface, such as the metal at the back of the computer. While you work, periodically touch an unpainted metal surface to dissipate static electricity, which could harm internal components.
-  **CAUTION:** When you disconnect a cable, pull on its connector or on its pull-tab, not on the cable itself. Some cables have connectors with locking tabs or thumb-screws that you must disengage before disconnecting the cable. When disconnecting cables, keep them evenly aligned to avoid bending any connector pins. When connecting cables, ensure that the connectors and ports are correctly oriented and aligned.
-  **CAUTION:** To disconnect a network cable, first unplug the cable from your computer and then unplug the cable from the network device.

Recommended Tools

The procedures in this document may require the following tools:

- Phillips screwdriver
- Plastic scribe

After Working Inside Your Computer

After you complete the replacement procedures, ensure the following:

- Replace all screws and ensure that no stray screws remain inside your computer
- Connect any external devices, cables, cards, and any other part(s) you removed before working on your computer
- Connect your computer and all attached devices to the electrical outlets



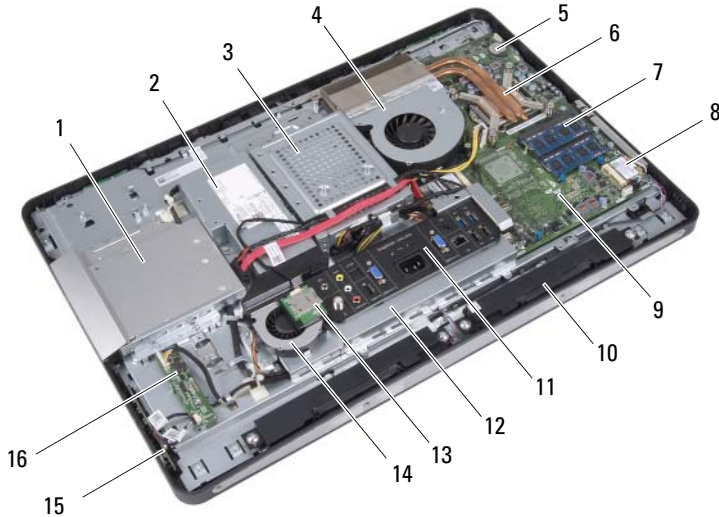
CAUTION: Before turning on your computer, replace all screws and ensure that no stray screws remain inside the computer. Failure to do so may damage your computer.

Technical Overview



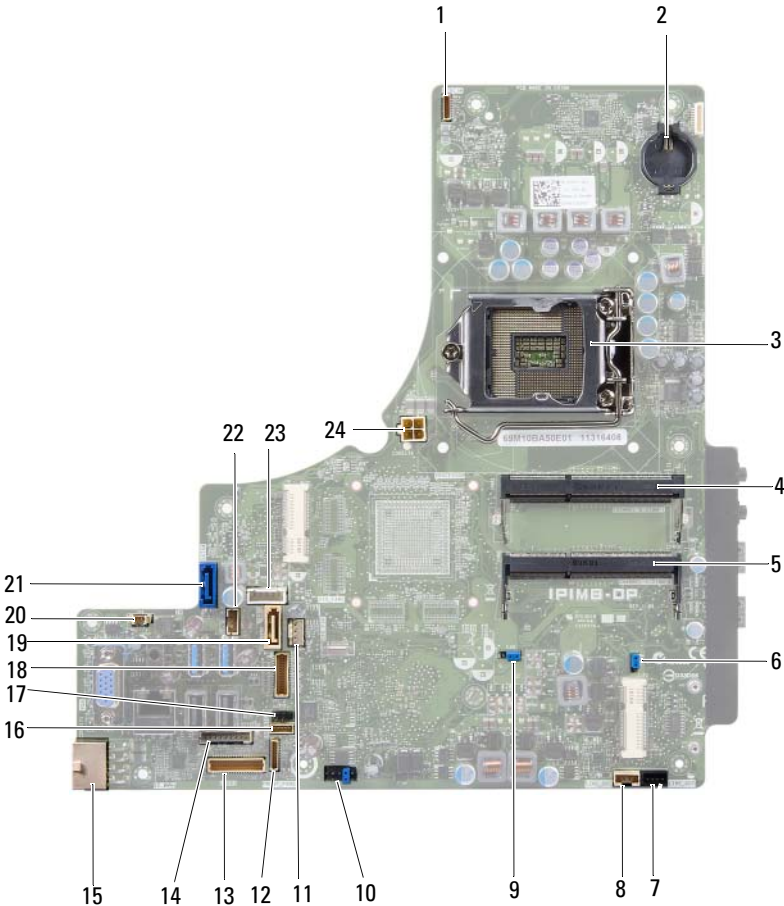
WARNING: Before working inside your computer, read the safety information that shipped with your computer and follow the steps in "Before You Begin" on page 11. For additional safety best practices information, see the Regulatory Compliance Homepage at dell.com/regulatory_compliance.

Inside View of Your Computer



- | | | | |
|----|------------------------|----|-------------------------|
| 1 | optical-drive assembly | 2 | power-supply unit |
| 3 | hard-drive assembly | 4 | processor heat-sink fan |
| 5 | coin-cell battery | 6 | processor heat-sink |
| 7 | memory module(s) | 8 | wireless Mini-Card |
| 9 | system board | 10 | speakers (2) |
| 11 | I/O cover | 12 | I/O board shield |
| 13 | B-CAS card | 14 | power-supply fan |
| 15 | power-button board | 16 | converter board |

System Board Components



1	camera cable connector (WEBCAM)	2	battery socket (BAT1)
3	processor socket (PROCESSOR)	4	memory-module connector (CHANNEL A DIMM 1)
5	memory-module connector (CHANNEL A DIMM 0)	6	CMOS reset jumper (SW50)
7	left speaker cable connector (LINE_OUT)	8	right speaker cable connector (LINE_OUT)
9	password reset jumper (E49)	10	SPI connector (E16)
11	processor heat-sink fan cable connector (CPU FAN)	12	power-button board cable connector (FRONT_PANEL)
13	I/O board cable connector (LVDS1)	14	converter board cable connector (INVERTER)
15	main power-supply cable connector (CON5171) (CN3111)	16	touchscreen board cable connector
17	infrared cable connector (CN29)	18	display cable connector (For non-AV board) (P170)
19	SATA connector (SATA1)	20	power-supply fan cable connector (P10)
21	SATA connector (CON5141)	22	power cable connector (P161)
23	power cable connector (P160)	24	processor power-supply cable connector (CON5176)

Stand

⚠ WARNING: Before working inside your computer, read the safety information that shipped with your computer and follow the steps in "Before You Begin" on page 11. For additional safety best practices information, see the Regulatory Compliance Homepage at dell.com/regulatory_compliance.

Removing the Stand

Procedure

⚠ CAUTION: Before opening your computer, ensure that you place the computer on a soft cloth or clean surface to avoid any scratches on the display.

- 1 Place the computer face down on a flat surface.
- 2 Using a plastic scribe, release the stand cover starting from the bottom of your computer.



1 stand cover

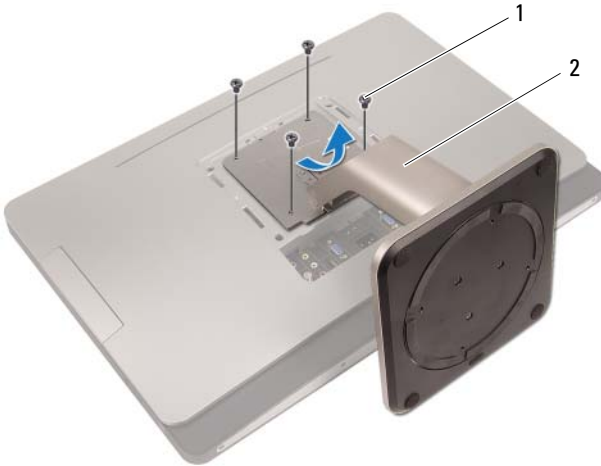
2 plastic scribe

3 Slide and lift the stand cover off your computer.



4 Remove the screws that secure the stand to your computer.

5 Pivot the stand upward and remove the stand off your computer.



1 screws (4)

2 stand

Replacing the Stand

Procedure

- 1 Align the screw holes on the stand with the screw holes on your computer.
- 2 Replace the screws that secure the stand to your computer.
- 3 Slide the stand cover and snap it into place.
- 4 Follow the instructions in "After Working Inside Your Computer" on page 13.

Back Cover

⚠ WARNING: Before working inside your computer, read the safety information that shipped with your computer and follow the steps in "Before You Begin" on page 11. For additional safety best practices information, see the Regulatory Compliance Homepage at dell.com/regulatory_compliance.

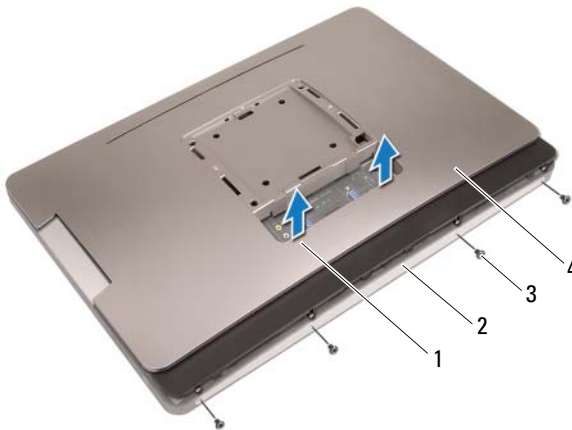
Removing the Back Cover

Prerequisites

- 1 Remove the stand. See "Removing the Stand" on page 19.

Procedure

- 1 Remove the screws that secure the back cover to your computer.
- 2 Insert your finger into the slots on the back cover, and lift the back cover to release it from the middle frame.
- 3 Lift the back cover off your computer.



- 1 slots (2)
- 3 screws (4)

- 2 middle frame
- 4 back cover

Replacing the Back Cover


Procedure

- 1 Place the back cover on your computer and snap it into place.
- 2 Ensure that the screw holes on the back cover align with the screw holes on the middle frame.
- 3 Replace the screws that secure the back cover to your computer.

Postrequisites

- 1 Replace the stand. See "Replacing the Stand" on page 21.
- 2 Follow the instructions in "After Working Inside Your Computer" on page 13.

B-CAS Card

 **WARNING:** Before working inside your computer, read the safety information that shipped with your computer and follow the steps in "Before You Begin" on page 11. For additional safety best practices information, see the Regulatory Compliance Homepage at dell.com/regulatory_compliance.

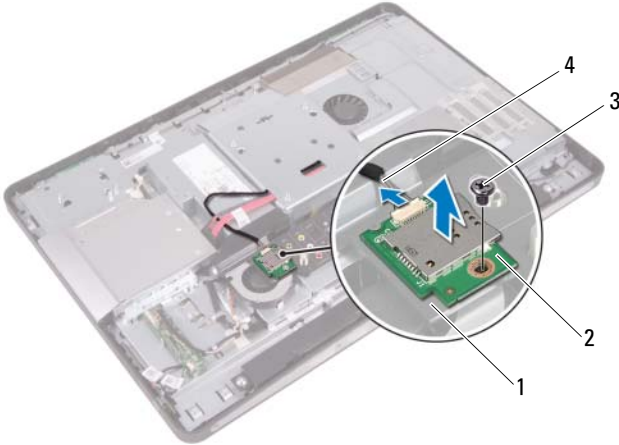
Removing the B-CAS Card

Prerequisites

- 1 Remove the stand. See "Removing the Stand" on page 19.
- 2 Remove the back cover. See "Removing the Back Cover" on page 23.

Procedure

- 1 Disconnect the B-CAS card cable from the connector on the B-CAS card.
- 2 Remove the screw that secures the BCAS-card to the I/O cover.
- 3 Lift the B-CAS card off the I/O cover.



- 1 I/O cover
- 3 screw

- 2 B-CAS card
- 4 B-CAS card cable

Replacing the B-CAS card


Procedure

- 1 Align the screw hole on the B-CAS card with the screw hole on the I/O cover.
- 2 Replace the screw that secures the B-CAS card to the I/O cover.
- 3 Connect the B-CAS card cable to the connector on the B-CAS card.

Postrequisites

- 1 Replace the back cover. See "Replacing the Back Cover" on page 24.
- 2 Replace the stand. See "Replacing the Stand" on page 21.
- 3 Follow the instructions in "After Working Inside Your Computer" on page 13.

Converter Board

 **WARNING:** Before working inside your computer, read the safety information that shipped with your computer and follow the steps in "Before You Begin" on page 11. For additional safety best practices information, see the Regulatory Compliance Homepage at dell.com/regulatory_compliance.

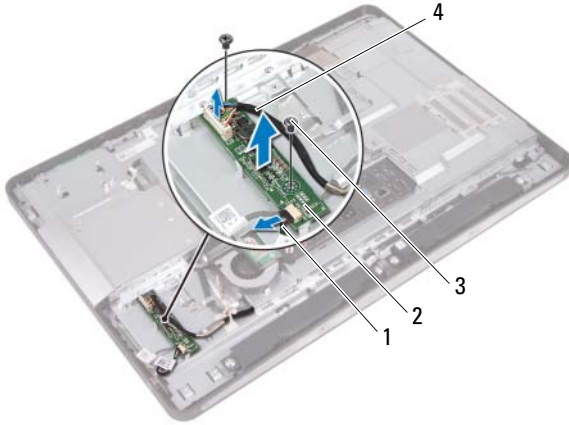
Removing the Converter Board

Prerequisites

- 1 Remove the stand. See "Removing the Stand" on page 19.
- 2 Remove the back cover. See "Removing the Back Cover" on page 23.

Procedure

- 1 Disconnect the converter-board cable and display-backlight cable from the connectors on the converter board.
- 2 Remove the screws that secure the converter board to the chassis.
- 3 Remove the converter board off the chassis.



1 display-backlight cable
3 screws (2)

2 converter board
4 converter-board cable

Replacing the Converter Board

Procedure

- 1 Align the screw holes on the converter board with the screw holes on the chassis.
- 2 Replace the screws that secure the converter board to the chassis.
- 3 Connect the converter-board cable and display-backlight cable to the connectors on the convertor board.

Postrequisites

- 1 Replace the back cover. See "Replacing the Back Cover" on page 24.
- 2 Replace the stand. See "Replacing the Stand" on page 21.
- 3 Follow the instructions in "After Working Inside Your Computer" on page 13.

Power-Button Board

⚠ WARNING: Before working inside your computer, read the safety information that shipped with your computer and follow the steps in "Before You Begin" on page 11. For additional safety best practices information, see the Regulatory Compliance Homepage at dell.com/regulatory_compliance.

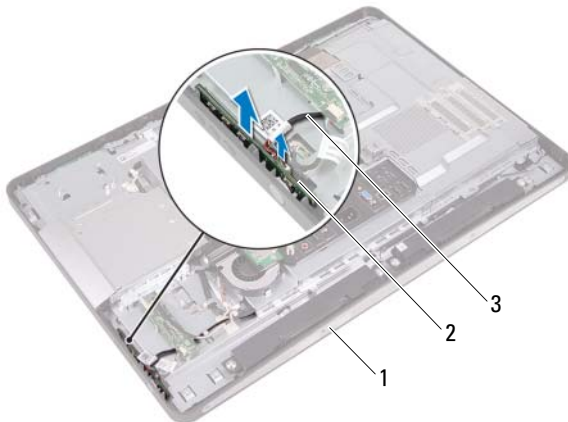
Removing the Power-Button Board

Prerequisites

- 1 Remove the stand. See "Removing the Stand" on page 19.
- 2 Remove the back cover. See "Removing the Back Cover" on page 23.

Procedure

- 1 Using your fingertips, gently lift the power-button board off the middle frame.
- 2 Disconnect the power-button board cable from the connector on the power-button board.



- 1 middle frame
- 2 power-button board
- 3 power-button board cable

Replacing the Power-Button Board

Procedure

- 1 Connect the power-button board cable to the connector on the power-button board.
- 2 Slide the power-button board into slot on the middle frame.

Postrequisites

- 1 Replace the back cover. See "Replacing the Back Cover" on page 24.
- 2 Replace the stand. See "Replacing the Stand" on page 21.
- 3 Follow the instructions in "After Working Inside Your Computer" on page 13.

Memory Module(s)

⚠ WARNING: Before working inside your computer, read the safety information that shipped with your computer and follow the steps in "Before You Begin" on page 11. For additional safety best practices information, see the Regulatory Compliance Homepage at dell.com/regulatory_compliance.

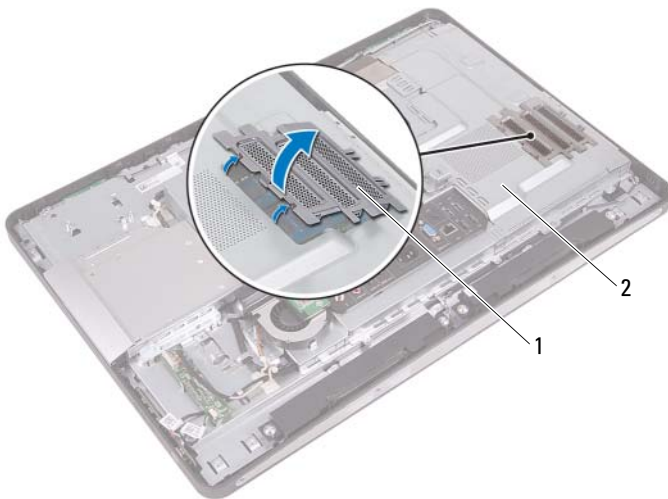
Removing the Memory Module(s)

Prerequisites

- 1 Remove the stand. See "Removing the Stand" on page 19.
- 2 Remove the back cover. See "Removing the Back Cover" on page 23.

Procedure

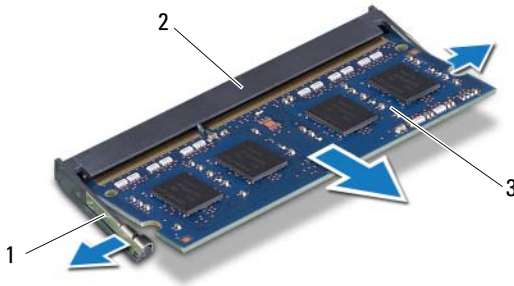
- 1 Using your fingertips, lift the memory-module shield to remove it from the system-board shield.



1 memory-module shield

2 system-board shield

- 2 Use your fingertips to carefully spread apart the securing clips on each end of the memory-module connector until the memory module pops up.
- 3 Remove the memory module from the memory-module connector.



- 1 securing clips (2)
- 3 memory module

2 memory-module connector

Replacing the Memory Module(s)

Procedure

- 1 Align the notch on the memory module with the tab on the memory-module connector.
- 2 Slide the memory module firmly into the connector at a 45-degree angle, and press the memory module down until it clicks into place. If you do not hear the click, remove the memory module and reinstall it.
- 3 Place the memory-module shield on the system-board shield and snap the memory-module shield into place.

Postrequisites

- 1 Replace the back cover. See "Replacing the Back Cover" on page 24.
- 2 Replace the stand. See "Replacing the Stand" on page 21.
- 3 Follow the instructions in "After Working Inside Your Computer" on page 13.

Optical Drive

 **WARNING:** Before working inside your computer, read the safety information that shipped with your computer and follow the steps in "Before You Begin" on page 11. For additional safety best practices information, see the Regulatory Compliance Homepage at dell.com/regulatory_compliance.

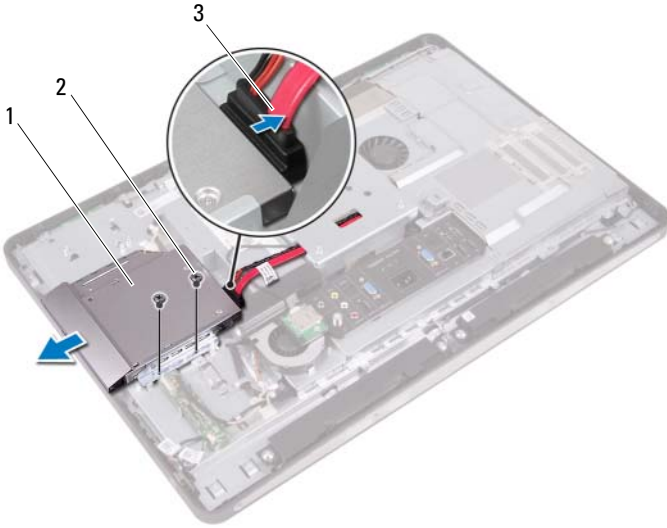
Removing the Optical Drive

Prerequisites

- 1 Remove the stand. See "Removing the Stand" on page 19.
- 2 Remove the back cover. See "Removing the Back Cover" on page 23.

Procedure

- 1 Disconnect the power and data cable from the connector on the optical drive.
- 2 Remove the screws that secure the optical drive to the chassis.
- 3 Slide the optical drive and remove it off the chassis.



- | | | | |
|---|----------------------|---|------------|
| 1 | optical drive | 2 | screws (2) |
| 3 | power and data cable | | |
- 4 Remove the screws that secure the optical-drive bracket to the optical drive.
 - 5 Remove the optical-drive bracket from the optical drive.

- 6 Pivot the optical-drive bezel upward to release it from the optical drive.
- 7 Remove the optical-drive bezel from the optical drive.



- 1 optical-drive bezel
- 3 screws (2)

- 2 optical-drive bracket

Replacing the Optical Drive

Procedure

- 1 Align the optical-drive bezel with the optical drive and snap it into place.
- 2 Align the screw holes on the optical-drive bracket with the screw holes on the optical drive.
- 3 Replace the screws that secure the optical-drive bracket to the optical drive.
- 4 Slide the optical drive into position and ensure that the screw holes on the optical drive bracket align with the screw holes on the chassis.
- 5 Replace the screws that secure the optical drive to the chassis.
- 6 Connect the power and data cable to the connector on the optical drive.

Postrequisites

- 1 Replace the back cover. See "Replacing the Back Cover" on page 24.
- 2 Replace the stand. See "Replacing the Stand" on page 21.
- 3 Follow the instructions in "After Working Inside Your Computer" on page 13.

VESA-Mount Bracket

⚠ WARNING: Before working inside your computer, read the safety information that shipped with your computer and follow the steps in "Before You Begin" on page 11. For additional safety best practices information, see the Regulatory Compliance Homepage at dell.com/regulatory_compliance.

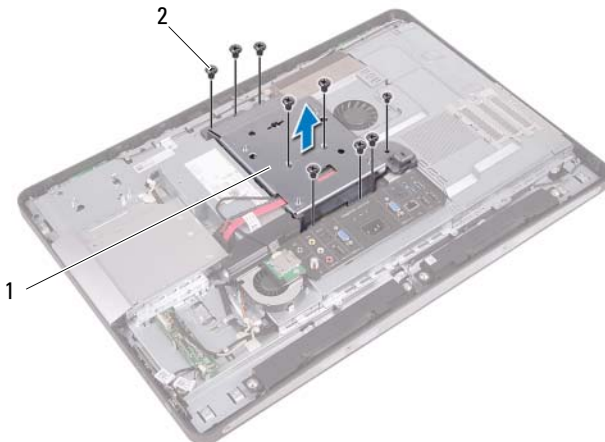
Removing the VESA-Mount Bracket

Prerequisites

- 1 Remove the stand. See "Removing the Stand" on page 19.
- 2 Remove the back cover. See "Removing the Back Cover" on page 23.

Procedure

- 1 Remove the screws that secure the VESA-mount bracket to the chassis.
- 2 Lift the VESA-mount bracket off the chassis.



1 VESA-mount bracket

2 screws (9)

Replacing the VESA-Mount Bracket

Procedure

- 1 Align the screw holes on the VESA-mount bracket with the screw holes on the chassis.
- 2 Replace the screws that secure the VESA-mount bracket to the chassis.

Postrequisites

- 1 Replace the back cover. See "Replacing the Back Cover" on page 24.
- 2 Replace the stand. See "Replacing the Stand" on page 21.
- 3 Follow the instructions in "After Working Inside Your Computer" on page 13.

Hard Drive

 **WARNING:** Before working inside your computer, read the safety information that shipped with your computer and follow the steps in "Before You Begin" on page 11. For additional safety best practices information, see the Regulatory Compliance Homepage at dell.com/regulatory_compliance.

 **CAUTION:** To avoid data loss, do not remove the hard drive while the computer is On or in Sleep state.

 **CAUTION:** Hard drives are extremely fragile. Exercise care when handling the hard drive.

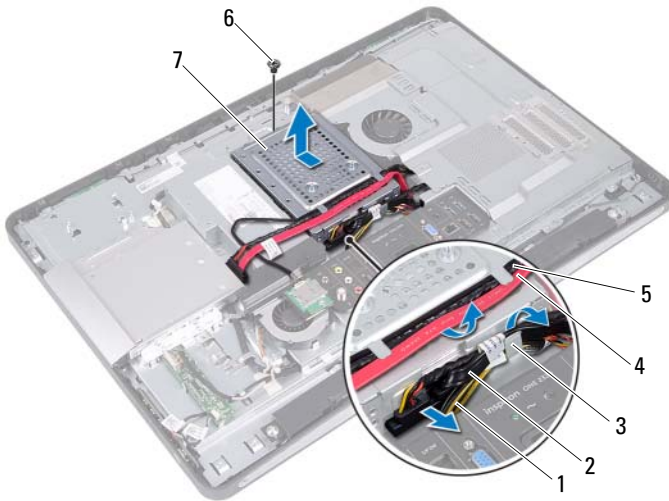
Removing the Hard Drive

Prerequisites

- 1 Remove the stand. See "Removing the Stand" on page 19.
- 2 Remove the back cover. See "Removing the Back Cover" on page 23.
- 3 Remove the VESA-mount bracket.
See "Removing the VESA-Mount Bracket" on page 43.

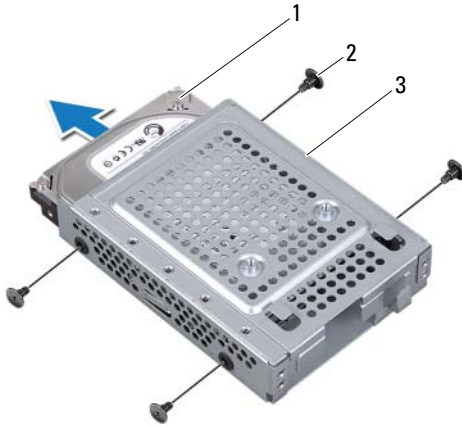
Procedure

- 1 Remove the optical drive's power and data cable and the B-CAS card cable from the routing guides on the hard-drive cage.
- 2 Disconnect the power and data cable from the connector on the hard drive.
- 3 Remove the power-supply cable from the routing guide on the hard drive cage.
- 4 Remove the screw that secures the hard-drive cage to the chassis.
- 5 Slide the hard-drive cage toward the top of your computer and remove the hard-drive cage off the chassis.



- | | | | |
|---|--------------------|---|--------------------------------------|
| 1 | power-supply cable | 2 | power and data cable (hard drive) |
| 3 | routing guide | 4 | power and data cable (optical drive) |
| 5 | B-CAS card cable | 6 | screw |
| 7 | hard-drive cage | | |

- 6 Remove the screws that secure the hard-drive cage to the hard drive.
- 7 Slide the hard drive out of the hard-drive cage.



- | | | | |
|---|-----------------|---|------------|
| 1 | hard drive | 2 | screws (4) |
| 3 | hard-drive cage | | |

Replacing the Hard Drive


Procedure

- 1 Slide the hard drive into the hard-drive cage.
- 2 Align the screw holes on the hard-drive cage with the screw holes on the hard drive.
- 3 Replace the screws that secure the hard-drive cage to the hard drive.
- 4 Place the hard-drive cage on the chassis and slide it toward the bottom of your computer. Ensure that the tabs at the bottom of the hard-drive cage slide into the slots on the chassis.
- 5 Route the power-supply cable through the routing guide on the hard-drive cage.
- 6 Route the optical drive's power and data cable and the B-CAS card cable through the routing guides on the hard-drive cage.
- 7 Route the hard-drive's power and data cable through the routing guide on the hard-drive cage.
- 8 Connect the power and data cable to the connector on the hard drive.

Postrequisites

- 1 Replace the VESA-mount bracket.
See "Replacing the VESA-Mount Bracket" on page 44.
- 2 Replace the back cover. See "Replacing the Back Cover" on page 24.
- 3 Replace the stand. See "Replacing the Stand" on page 21.
- 4 Follow the instructions in "After Working Inside Your Computer" on page 13.

System-Board Shield

 **WARNING:** Before working inside your computer, read the safety information that shipped with your computer and follow the steps in "Before You Begin" on page 11. For additional safety best practices information, see the Regulatory Compliance Homepage at dell.com/regulatory_compliance.

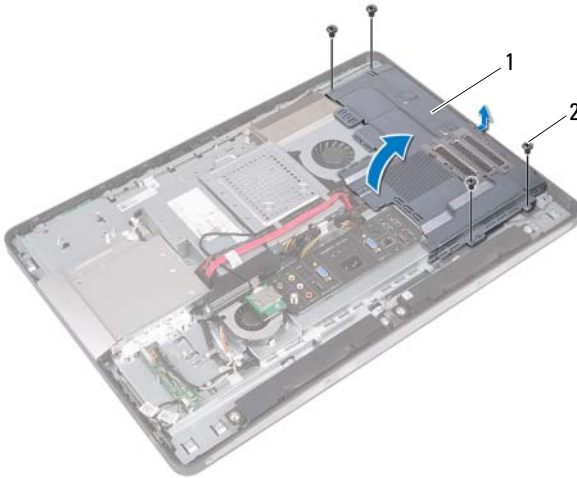
Removing the System-Board Shield

Prerequisites

- 1 Remove the stand. See "Removing the Stand" on page 19.
- 2 Remove the back cover. See "Removing the Back Cover" on page 23.
- 3 Remove the VESA-mount bracket.
See "Removing the VESA-Mount Bracket" on page 43.

Procedure

- 1 Remove the screws that secure the system-board shield to the chassis.
- 2 Turn the system-board shield to the side of your computer and then release the system-board shield off the chassis.



1 system-board shield

2 screws (4)

Replacing the System-Board Shield

Procedure

- 1 Align the screw holes on the system-board shield with the screw holes on the chassis.
- 2 Replace the screws that secure the system-board shield to the chassis.

Postrequisites

- 1 Replace the VESA-mount bracket.
See "Replacing the VESA-Mount Bracket" on page 44.
- 2 Replace the back cover. See "Replacing the Back Cover" on page 24.
- 3 Replace the stand. See "Replacing the Stand" on page 21.
- 4 Follow the instructions in "After Working Inside Your Computer" on page 13.

TV Tuner Card



WARNING: Before working inside your computer, read the safety information that shipped with your computer and follow the steps in "Before You Begin" on page 11. For additional safety best practices information, see the Regulatory Compliance Homepage at dell.com/regulatory_compliance.

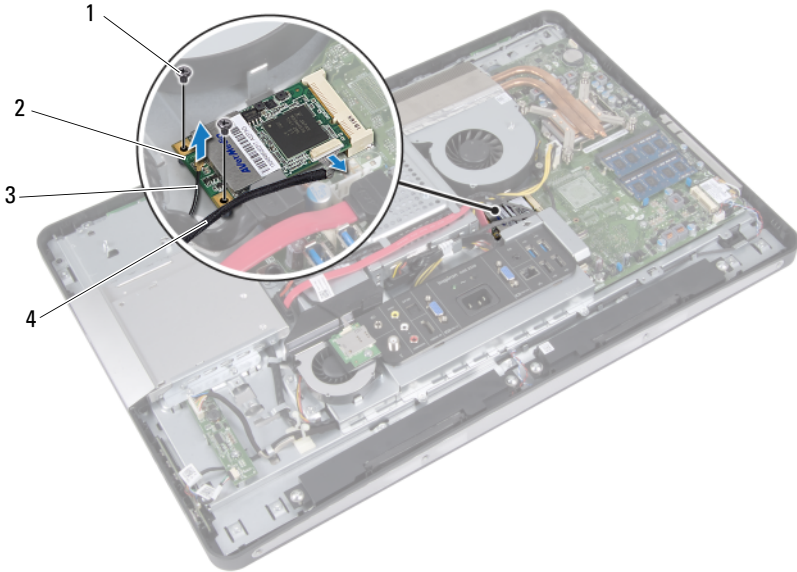
Removing the TV Tuner Card

Prerequisites

- 1 Remove the stand. See "Removing the Stand" on page 19.
- 2 Remove the back cover. See "Removing the Back Cover" on page 23.
- 3 Remove the VESA-mount bracket.
See "Removing the VESA-Mount Bracket" on page 43.
- 4 Remove the system-board shield.
See "Removing the System-Board Shield" on page 49.

Procedure

- 1 Disconnect the antenna cable from the connector on the TV tuner card.
- 2 Remove the screws that secure the TV tuner card to the chassis.
- 3 For Japan only: disconnect the B-CAS card cable from the connector on the TV tuner card.



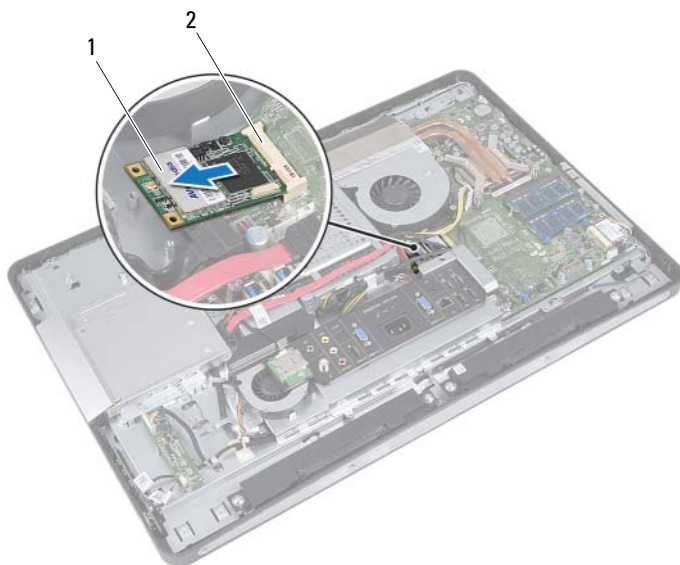
1 screws (2)

3 antenna cable

2 TV tuner card

4 B-CAS card cable

- Slide and remove the TV tuner card out of the system-board connector.



1 TV tuner card

2 system-board connector

Replacing the TV Tuner Card

Procedure

- 1 Align the notch on the TV tuner card with the tab on the system-board connector.
- 2 Insert the TV tuner card connector at a 45-degree angle into the system-board connector.
- 3 Press the other end of the TV tuner card down into the slot on the system board and replace the screws that secure the TV tuner card to the system-board connector.
- 4 Connect the antenna cable to the connector on the TV tuner card.
- 5 For Japan only: connect the B-CAS card cable to the connector on the TV tuner card.

Postrequisites

- 1 Replace the system-board shield.
See "Replacing the System-Board Shield" on page 51.
- 2 Replace the VESA-mount bracket.
See "Replacing the VESA-Mount Bracket" on page 44.
- 3 Replace the back cover. See "Replacing the Back Cover" on page 24.
- 4 Replace the stand. See "Replacing the Stand" on page 21.
- 5 Follow the instructions in "After Working Inside Your Computer" on page 13.

Wireless Mini-Card



WARNING: Before working inside your computer, read the safety information that shipped with your computer and follow the steps in "Before You Begin" on page 11. For additional safety best practices information, see the Regulatory Compliance Homepage at dell.com/regulatory_compliance.



NOTE: Dell does not guarantee compatibility or provide support for Mini-Cards from sources other than Dell.

If you ordered a wireless Mini-Card with your computer, the card is already installed.

Your computer has one half Mini-Card slot which supports a Wireless Local Area Network (WLAN) + Bluetooth combo card.

Removing the Wireless Mini-Card

Prerequisites

- 1 Remove the stand. See "Removing the Stand" on page 19.
- 2 Remove the back cover. See "Removing the Back Cover" on page 23.
- 3 Remove the VESA-mount bracket.
See "Removing the VESA-Mount Bracket" on page 43.
- 4 Remove the system-board shield.
See "Removing the System-Board Shield" on page 49.




CAUTION: When the Mini-Card is not in the computer, store it in protective antistatic packaging. For more information, see "Protecting Against Electrostatic Discharge" in the safety information that shipped with your computer.

Replacing the Wireless Mini-Card

Procedure

- 1 Align the notch on the Mini-Card with the tab on the system-board connector.

 **CAUTION:** Use firm and even pressure to slide the Mini-Card into place. If you use excessive force, you may damage the connector.

 **CAUTION:** The connectors are keyed to ensure correct insertion. If you feel resistance, check the connectors on the Mini-Card and on the system board, and realign the Mini-Card.

 **CAUTION:** To avoid damage to the Mini-Card, never place cables under the Mini-Card.

- 2 Insert the Mini-Card connector at a 45-degree angle into the system-board connector.
- 3 Press the other end of the Mini-Card down into the slot on the system board and replace the screws that secure the Mini-Card to the system-board connector.
- 4 Connect the antenna cables to the connectors on the Mini-Card.

The following table provides the antenna cable color scheme for the Mini-Card supported by your computer.


Connectors on the Mini-Card	Antenna Cable Color Scheme
WLAN + Bluetooth (2 cables)	
Main WLAN + Bluetooth (white triangle)	white
Auxiliary WLAN + Bluetooth (black triangle)	black

Postrequisites

- 1 Replace the system-board shield.
See "Replacing the System-Board Shield" on page 51.
- 2 Replace the VESA-mount bracket.
See "Replacing the VESA-Mount Bracket" on page 44.

- 3** Replace the back cover. See "Replacing the Back Cover" on page 24.
- 4** Replace the stand. See "Replacing the Stand" on page 21.
- 5** Follow the instructions in "After Working Inside Your Computer" on page 13.

Speakers

 **WARNING:** Before working inside your computer, read the safety information that shipped with your computer and follow the steps in "Before You Begin" on page 11. For additional safety best practices information, see the Regulatory Compliance Homepage at dell.com/regulatory_compliance.

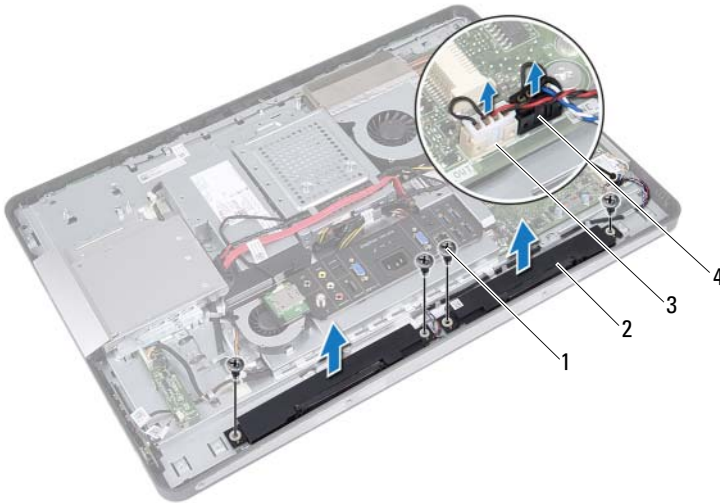
Removing the Speakers

Prerequisites

- 1 Remove the stand. See "Removing the Stand" on page 19.
- 2 Remove the back cover. See "Removing the Back Cover" on page 23.
- 3 Remove the VESA-mount bracket.
See "Removing the VESA-Mount Bracket" on page 43.
- 4 Remove the system-board shield.
See "Removing the System-Board Shield" on page 49.

Procedure

- 1 Disconnect the left and right speaker cables from the system-board connectors.
- 2 Remove the speaker cables from the routing guides on the chassis.
- 3 Remove the screws that secure the speakers to the chassis.
- 4 Lift the speakers off the chassis.



- | | | | |
|---|-------------------------------|---|------------------------------|
| 1 | screws (4) | 2 | speakers (2) |
| 3 | right-speaker cable connector | 4 | left-speaker cable connector |

Replacing the Speakers


Procedure

- 1 Align the screw holes on the speakers with the screw holes on the chassis
- 2 Replace the screws that secure the speakers to the chassis.
- 3 Route the speaker cables through the routing guides on the chassis.
- 4 Connect the left and right speaker cables to the system-board connectors.

Postrequisites

- 1 Replace the system-board shield.
See "Replacing the System-Board Shield" on page 51.
- 2 Replace the VESA-mount bracket.
See "Replacing the VESA-Mount Bracket" on page 44.
- 3 Replace the back cover. See "Replacing the Back Cover" on page 24.
- 4 Replace the stand. See "Replacing the Stand" on page 21.
- 5 Follow the instructions in "After Working Inside Your Computer" on page 13.

Processor Heat-Sink

 **WARNING:** Before working inside your computer, read the safety information that shipped with your computer and follow the steps in "Before You Begin" on page 11. For additional safety best practices information, see the Regulatory Compliance Homepage at dell.com/regulatory_compliance.

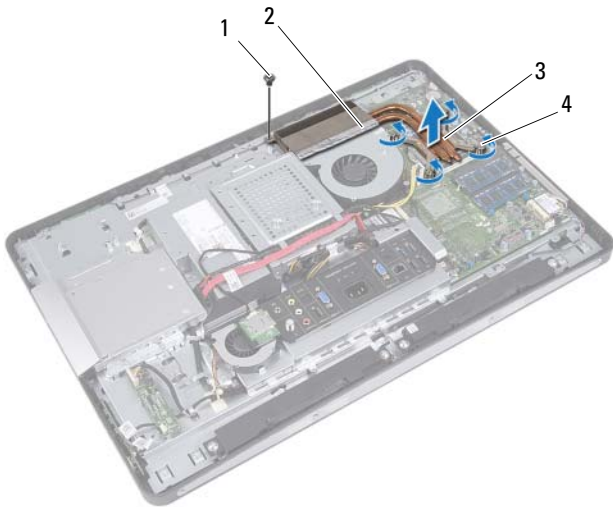
Removing the Processor Heat-Sink

Prerequisites

- 1 Remove the stand. See "Removing the Stand" on page 19.
- 2 Remove the back cover. See "Removing the Back Cover" on page 23.
- 3 Remove the VESA-mount bracket.
See "Removing the VESA-Mount Bracket" on page 43.
- 4 Remove the system-board shield.
See "Removing the System-Board Shield" on page 49.

Procedure

- 1 Remove the screw that secures the processor heat-sink to the chassis.
- 2 In sequential order (indicated on the processor heat-sink), loosen the captive screws that secure the processor heat-sink to the system board.
- 3 Peel the portion of the aluminum foil that is adhered over the processor heat-sink fan.
- 4 Lift the processor heat-sink off the system board.



1 screw

2 aluminum foil

3 processor heat-sink

4 captive screws (4)

Replacing the Processor Heat-Sink

Procedure




NOTE: The original thermal grease can be reused, if the original system board and heat sink are reinstalled together. If either the system board or the heat sink is replaced, use the thermal pad provided in the kit to ensure that thermal conductivity is achieved.

- 1 Clean the thermal grease from the bottom of the processor heat-sink and reapply it.
- 2 Align the screw holes on the processor heat-sink with the screw holes on the system board.
- 3 In sequential order (indicated on the processor heat-sink), tighten the captive screws that secure the processor heat-sink to the system board.
- 4 Replace the screw that secures the processor heat-sink to the chassis.
- 5 Adhere the aluminum foil on the processor heat-sink over the processor heat-sink fan.

Postrequisites

- 1 Replace the system-board shield.
See "Replacing the System-Board Shield" on page 51.
- 2 Replace the VESA-mount bracket.
See "Replacing the VESA-Mount Bracket" on page 44.
- 3 Replace the back cover. See "Replacing the Back Cover" on page 24.
- 4 Replace the stand. See "Replacing the Stand" on page 21.
- 5 Follow the instructions in "After Working Inside Your Computer" on page 13.

Processor Heat-Sink Fan

 **WARNING:** Before working inside your computer, read the safety information that shipped with your computer and follow the steps in "Before You Begin" on page 11. For additional safety best practices information, see the Regulatory Compliance Homepage at dell.com/regulatory_compliance.

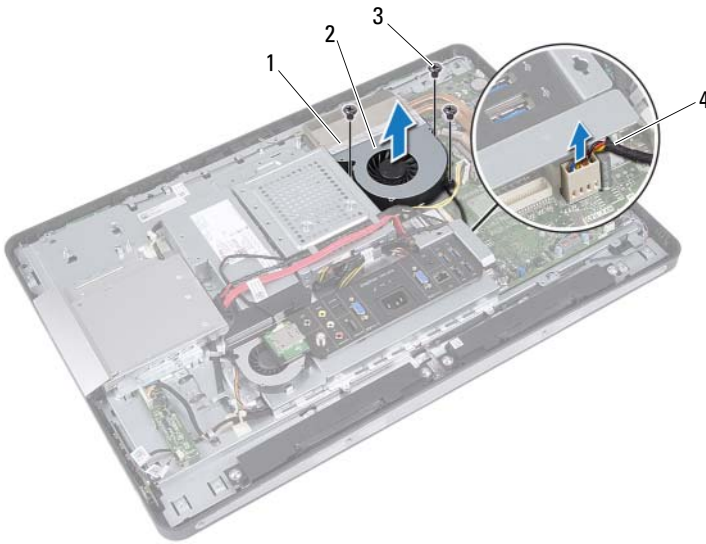
Removing the Processor Heat-Sink Fan

Prerequisites

- 1 Remove the stand. See "Removing the Stand" on page 19.
- 2 Remove the back cover. See "Removing the Back Cover" on page 23.
- 3 Remove the VESA-mount bracket.
See "Removing the VESA-Mount Bracket" on page 43.
- 4 Remove the system-board shield.
See "Removing the System-Board Shield" on page 49.

Procedure

- 1 Disconnect the processor heat-sink fan cable from the system-board connector.
- 2 Remove the screws that secure the processor heat-sink fan to the chassis.
- 3 Peel the portion of the aluminum foil that is adhered over the processor heat-sink.
- 4 Lift the processor heat-sink fan off the chassis



1 aluminum foil
3 screws (3)

2 processor heat-sink fan
4 processor heat-sink fan cable

Replacing the Processor Heat-Sink Fan


Procedure

- 1** Align the screw holes on the processor heat-sink fan with the screw holes on the chassis.
- 2** Replace the screws that secure the processor heat-sink fan to the chassis.
- 3** Connect the processor heat-sink fan cable to the system-board connector.
- 4** Adhere the aluminum foil on the processor heat-sink fan over the processor heat-sink.

Postrequisites

- 1** Replace the system-board shield.
See "Replacing the System-Board Shield" on page 51.
- 2** Replace the VESA-mount bracket.
See "Replacing the VESA-Mount Bracket" on page 44.
- 3** Replace the back cover. See "Replacing the Back Cover" on page 24.
- 4** Replace the stand. See "Replacing the Stand" on page 21.
- 5** Follow the instructions in "After Working Inside Your Computer" on page 13.

Processor

 **WARNING:** Before working inside your computer, read the safety information that shipped with your computer and follow the steps in "Before You Begin" on page 11. For additional safety best practices information, see the Regulatory Compliance Homepage at dell.com/regulatory_compliance.

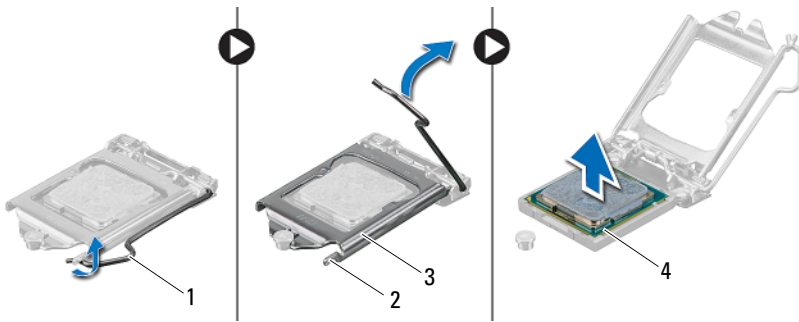
Removing the Processor

Prerequisites

- 1 Remove the stand. See "Removing the Stand" on page 19.
- 2 Remove the back cover. See "Removing the Back Cover" on page 23.
- 3 Remove the VESA-mount bracket.
See "Removing the VESA-Mount Bracket" on page 43.
- 4 Remove the system-board shield.
See "Removing the System-Board Shield" on page 49.
- 5 Remove the processor heat-sink.
See "Removing the Processor Heat-Sink" on page 65.

Procedure

- 1 Press the release lever down on the processor cover and then pull it outwards to release it from the tab that secures it.
- 2 Extend the release lever completely to open the processor cover. Leave the release lever extended in the release position so that the socket is ready for the new processor.
- 3 Gently lift the processor to remove it from the socket.



- | | | | |
|---|-----------------|---|-----------|
| 1 | release lever | 2 | tab |
| 3 | processor cover | 4 | processor |

Replacing the Processor

Procedure

- 1 Unpack the new processor, being careful not to touch the underside of the processor.

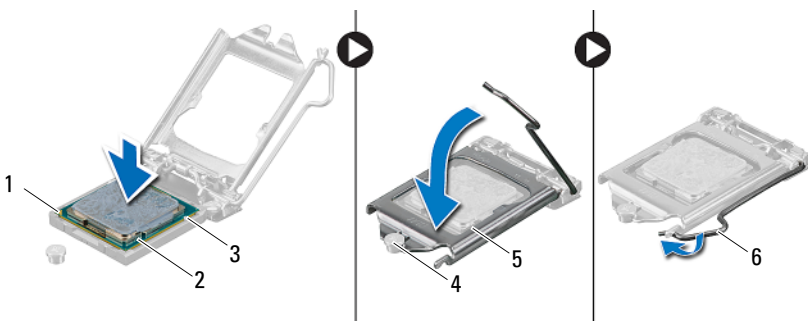
△ **CAUTION: Ground yourself by touching an unpainted metal surface.**

△ **CAUTION: You must position the processor correctly in the processor socket to avoid permanent damage to the processor.**

- 2 If the release lever on the socket is not fully extended, move it to that position.
- 3 Orient the alignment notches on the processor with the alignment tabs on the socket.
- 4 Align the pin-1 corners of the processor and socket, and then place the processor in the processor socket. Set the processor lightly in the socket and ensure that the processor is positioned correctly.

△ **CAUTION: Ensure that the processor cover notch is positioned underneath the alignment post.**

- 5 When the processor is fully seated in the socket, close the processor cover.
- 6 Pivot the release lever down and place it under the tab on the processor cover.



- 1 processor pin-1 indicator
- 3 alignment notches (2)
- 5 processor cover

- 2 processor
- 4 alignment post
- 6 release lever

- 7 Clean the thermal grease from the bottom of the heat sink.
- 8 Apply the new thermal grease to the top of the processor.




CAUTION: Ensure that you apply new thermal grease. The new thermal grease is critical for ensuring adequate thermal bonding, which is a requirement for optimal processor operation.

Postrequisites

- 1 Replace the processor heat-sink.
See "Replacing the Processor Heat-Sink" on page 67.
- 2 Replace the system-board shield.
See "Replacing the System-Board Shield" on page 51.
- 3 Replace the VESA-mount bracket.
See "Replacing the VESA-Mount Bracket" on page 44.
- 4 Replace the back cover. See "Replacing the Back Cover" on page 24.
- 5 Replace the stand. See "Replacing the Stand" on page 21.
- 6 Follow the instructions in "After Working Inside Your Computer" on page 13.

Power-Supply Fan Bracket

 **WARNING:** Before working inside your computer, read the safety information that shipped with your computer and follow the steps in "Before You Begin" on page 11. For additional safety best practices information, see the Regulatory Compliance Homepage at dell.com/regulatory_compliance.

Removing the Power-Supply Fan Bracket

Prerequisites

- 1 Remove the stand. See "Removing the Stand" on page 19.
- 2 Remove the back cover. See "Removing the Back Cover" on page 23.

Procedure

- 1 Disconnect the B-CAS card cable from the connector on the B-CAS card.
- 2 Remove the screw that secures the power-supply fan bracket to the chassis.
- 3 Lift the power-supply fan bracket off the chassis.



1 screw

2 power-supply fan bracket

3 B-CAS card cable

Replacing the Power-Supply Fan Bracket

Procedure

- 1 Align the screw hole on the power-supply fan bracket with the screw hole on the chassis.
- 2 Replace the screw that secures the power-supply fan bracket to the chassis.
- 3 Connect the B-CAS card cable to the connector on the B-CAS card.

Postrequisites

- 1 Replace the back cover. See "Replacing the Back Cover" on page 24.
- 2 Replace the stand. See "Replacing the Stand" on page 21.
- 3 Follow the instructions in "After Working Inside Your Computer" on page 13.

I/O Cover



WARNING: Before working inside your computer, read the safety information that shipped with your computer and follow the steps in "Before You Begin" on page 11. For additional safety best practices information, see the Regulatory Compliance Homepage at dell.com/regulatory_compliance.

Removing the I/O Cover

Prerequisites

- 1 Remove the stand. See "Removing the Stand" on page 19.
- 2 Remove the back cover. See "Removing the Back Cover" on page 23.
- 3 Remove the B-CAS card. See "Removing the B-CAS Card" on page 25.

Procedure

Gently lift the I/O cover to release it from the tabs that secure it to the chassis.



1 I/O cover

Replacing the I/O Cover

Procedure

Place the I/O cover over the I/O board shield and snap it into position.

Postrequisites

- 1 Replace the B-CAS card. See "Replacing the B-CAS card" on page 27.
- 2 Replace the back cover. See "Replacing the Back Cover" on page 24.
- 3 Replace the stand. See "Replacing the Stand" on page 21.
- 4 Follow the instructions in "After Working Inside Your Computer" on page 13.

I/O Board Shield



WARNING: Before working inside your computer, read the safety information that shipped with your computer and follow the steps in "Before You Begin" on page 11. For additional safety best practices information, see the Regulatory Compliance Homepage at dell.com/regulatory_compliance.

Removing the I/O Board Shield

Prerequisites

- 1 Remove the stand. See "Removing the Stand" on page 19.
- 2 Remove the back cover. See "Removing the Back Cover" on page 23.
- 3 Remove the VESA-mount bracket.
See "Removing the VESA-Mount Bracket" on page 43.
- 4 Remove the system-board shield.
See "Removing the System-Board Shield" on page 49.
- 5 Remove the power-supply fan bracket.
See "Removing the Power-Supply Fan Bracket" on page 77.
- 6 Remove the B-CAS card. See "Removing the B-CAS Card" on page 25.
- 7 Remove the I/O cover. See "Removing the I/O Cover" on page 81.

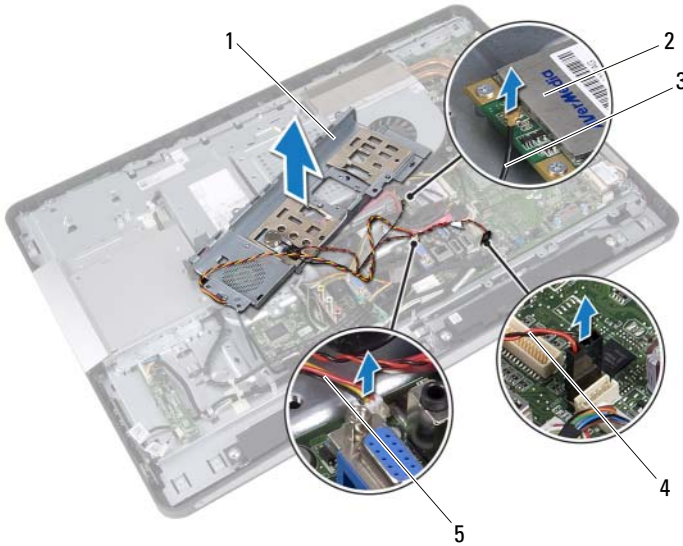
Procedure

- 1 Remove the screws that secure the power port to the I/O board shield.
- 2 Remove the screw that secures the power supply control board to the I/O board shield.
- 3 Remove the screws that secure the I/O board shield to the chassis.
- 4 Turn the I/O board shield over and place it on the hard-drive cage.



- | | | | |
|---|----------------------------|---|------------------|
| 1 | power-supply control board | 2 | screws (7) |
| 3 | power port | 4 | I/O board shield |

- 5 Slide the power port and power-supply control board through the slot on the I/O board shield.
- 6 Disconnect the power-supply fan cable and infrared cable from the system-board connectors.
- 7 Disconnect the antenna cable from the connector on the TV tuner card.
- 8 Lift the I/O board shield off the chassis.



- | | | | |
|---|------------------------|---|----------------|
| 1 | I/O board shield | 2 | TV tuner card |
| 3 | antenna cable | 4 | infrared cable |
| 5 | power-supply fan cable | | |

Replacing the I/O Board Shield


Procedure

- 1 Connect the power-supply fan cable and infrared cable to the system-board connectors.
- 2 Connect the antenna cable to the connector on the TV tuner card.
- 3 Slide the power port and the power-supply control board through the slot on the I/O board shield.
- 4 Align the screw holes on the I/O board shield with the screw holes on the chassis.
- 5 Replace the screws that secure the I/O board shield to the chassis.
- 6 Replace the screw that secures the power-supply control board to the I/O board shield.
- 7 Replace the screws that secure the power port to the I/O board shield.

Postrequisites

- 1 Replace the I/O cover. See "Replacing the I/O Cover" on page 83.
- 2 Replace the B-CAS card. See "Replacing the B-CAS card" on page 27.
- 3 Replace the power-supply fan bracket.
See "Replacing the Power-Supply Fan Bracket" on page 79.
- 4 Replace the system-board shield.
See "Replacing the System-Board Shield" on page 51.
- 5 Replace the VESA-mount bracket.
See "Replacing the VESA-Mount Bracket" on page 44.
- 6 Replace the back cover. See "Replacing the Back Cover" on page 24.
- 7 Replace the stand. See "Replacing the Stand" on page 21.
- 8 Follow the instructions in "After Working Inside Your Computer" on page 13.

Power-Supply Unit

 **WARNING:** Before working inside your computer, read the safety information that shipped with your computer and follow the steps in "Before You Begin" on page 11. For additional safety best practices information, see the Regulatory Compliance Homepage at dell.com/regulatory_compliance.

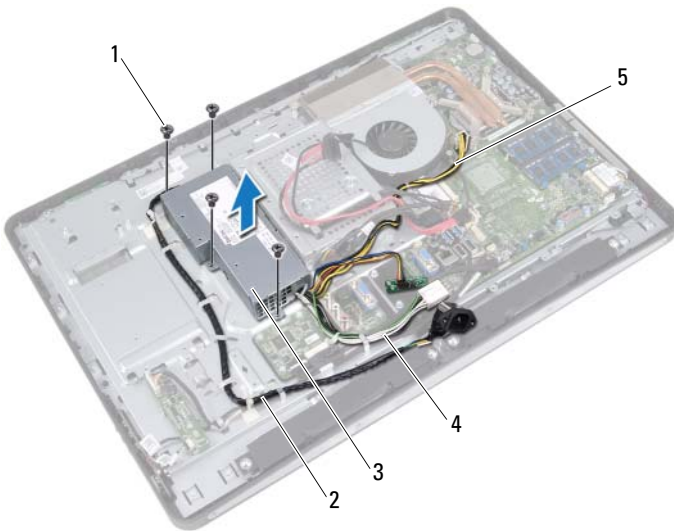
Removing the Power-Supply Unit

Prerequisites

- 1 Remove the stand. See "Removing the Stand" on page 19.
- 2 Remove the back cover. See "Removing the Back Cover" on page 23.
- 3 Remove the VESA-mount bracket.
See "Removing the VESA-Mount Bracket" on page 43.
- 4 Remove the system-board shield.
See "Removing the System-Board Shield" on page 49.
- 5 Remove the power-supply fan bracket.
See "Removing the Power-Supply Fan Bracket" on page 77.
- 6 Remove the B-CAS card. See "Removing the B-CAS Card" on page 25.
- 7 Remove the I/O cover. See "Removing the I/O Cover" on page 81.
- 8 Remove the I/O board shield.
See "Removing the I/O Board Shield" on page 85.

Procedure

- 1 Disconnect the main power cable and processor power cable from the connectors on the system board.
- 2 Remove the main power cable and processor power cable from the routing guides on the chassis.
- 3 Remove the power-supply port cable from the routing guides on the chassis.
- 4 Remove the screws that secure the power-supply unit to the chassis.
- 5 Lift the power-supply unit off the chassis.



- | | | | |
|---|-----------------------|---|------------------|
| 1 | screws (4) | 2 | power-port cable |
| 3 | power-supply unit | 4 | main power cable |
| 5 | processor power cable | | |

Replacing the Power-Supply Unit


Procedure

- 1 Align the screw holes on the power-supply unit with the screw holes on the chassis.
- 2 Replace the screws that secure the power-supply unit to the chassis.
- 3 Route the power-supply port cable through the routing guides on the chassis.
- 4 Route the main power cable and processor power cable through the routing guides on the chassis.
- 5 Connect the main power cable and processor power cable to the connectors on the system board.

Postrequisites

- 1 Replace the I/O board shield.
See "Replacing the I/O Board Shield" on page 88.
- 2 Replace the I/O cover. See "Replacing the I/O Cover" on page 83.
- 3 Replace the B-CAS card. See "Replacing the B-CAS card" on page 27.
- 4 Replace the power-supply fan bracket.
See "Replacing the Power-Supply Fan Bracket" on page 79.
- 5 Replace the system-board shield.
See "Replacing the System-Board Shield" on page 51.
- 6 Replace the VESA-mount bracket.
See "Replacing the VESA-Mount Bracket" on page 44.
- 7 Replace the back cover. See "Replacing the Back Cover" on page 24.
- 8 Replace the stand. See "Replacing the Stand" on page 21.
- 9 Follow the instructions in "After Working Inside Your Computer" on page 13.

Power-Supply Fan

 **WARNING:** Before working inside your computer, read the safety information that shipped with your computer and follow the steps in "Before You Begin" on page 11. For additional safety best practices information, see the Regulatory Compliance Homepage at dell.com/regulatory_compliance.

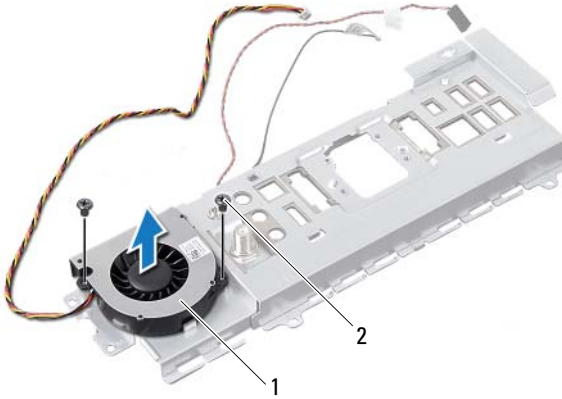
Removing the Power-Supply Fan

Prerequisites

- 1 Remove the stand. See "Removing the Stand" on page 19.
- 2 Remove the back cover. See "Removing the Back Cover" on page 23.
- 3 Remove the VESA-mount bracket.
See "Removing the VESA-Mount Bracket" on page 43.
- 4 Remove the system-board shield.
See "Removing the System-Board Shield" on page 49.
- 5 Remove the power-supply fan bracket.
See "Removing the Power-Supply Fan Bracket" on page 77.
- 6 Remove the B-CAS card. See "Removing the B-CAS Card" on page 25.
- 7 Remove the I/O cover. See "Removing the I/O Cover" on page 81.
- 8 Remove the I/O board shield.
See "Removing the I/O Board Shield" on page 85.

Procedure

- 1 Remove the screws that secure the power-supply fan to the I/O board shield.
- 2 Lift the power-supply fan off the I/O board shield.



1 power-supply fan

2 screws (2)

Replacing the Power-Supply Fan

Procedure

- 1 Align the screw holes on the power-supply fan with the screw holes on the I/O board shield.
- 2 Replace the screws that secure the power-supply fan to the I/O board shield.

Postrequisites

- 1 Replace the I/O board shield.
See "Replacing the I/O Board Shield" on page 88.
- 2 Replace the I/O cover. See "Replacing the I/O Cover" on page 83.
- 3 Replace the B-CAS card. See "Replacing the B-CAS card" on page 27.
- 4 Replace the power-supply fan bracket.
See "Replacing the Power-Supply Fan Bracket" on page 79.
- 5 Replace the system-board shield.
See "Replacing the System-Board Shield" on page 51.
- 6 Replace the VESA-mount bracket.
See "Replacing the VESA-Mount Bracket" on page 44.
- 7 Replace the back cover. See "Replacing the Back Cover" on page 24.
- 8 Replace the stand. See "Replacing the Stand" on page 21.
- 9 Follow the instructions in "After Working Inside Your Computer" on page 13.

TV-In Port



WARNING: Before working inside your computer, read the safety information that shipped with your computer and follow the steps in "Before You Begin" on page 11. For additional safety best practices information, see the Regulatory Compliance Homepage at dell.com/regulatory_compliance.

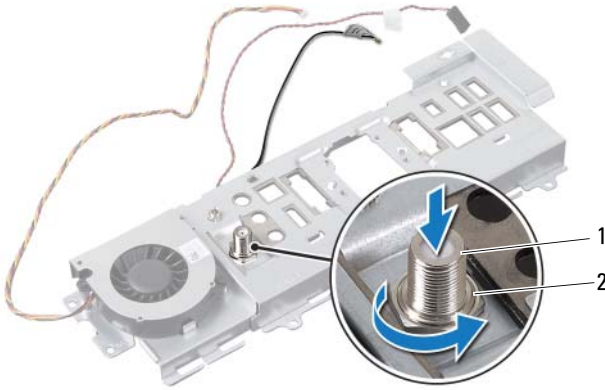
Removing the TV-In Port

Prerequisites

- 1 Remove the stand. See "Removing the Stand" on page 19.
- 2 Remove the back cover. See "Removing the Back Cover" on page 23.
- 3 Remove the VESA-mount bracket.
See "Removing the VESA-Mount Bracket" on page 43.
- 4 Remove the system-board shield.
See "Removing the System-Board Shield" on page 49.
- 5 Remove the power-supply fan bracket.
See "Removing the Power-Supply Fan Bracket" on page 77.
- 6 Remove the B-CAS card. See "Removing the B-CAS Card" on page 25.
- 7 Remove the I/O cover. See "Removing the I/O Cover" on page 81.
- 8 Remove the I/O board shield.
See "Removing the I/O Board Shield" on page 85.

Procedure

- 1 Remove the hex nut that secures the TV-in port to the I/O board shield.
- 2 Slide the TV-in port along with its cable through the slot on the I/O board shield.



1 TV-in port

2 hex nut

Replacing the TV-In Port


Procedure

- 1 Slide the TV-in port along with its cable through the slot on the I/O board shield.
- 2 Replace the hex nut that secures the TV-in port to the I/O board shield.

Postrequisites

- 1 Replace the I/O board shield.
See "Replacing the I/O Board Shield" on page 88.
- 2 Replace the I/O cover. See "Replacing the I/O Cover" on page 83.
- 3 Replace the B-CAS card. See "Replacing the B-CAS card" on page 27.
- 4 Replace the power-supply fan bracket.
See "Replacing the Power-Supply Fan Bracket" on page 79.
- 5 Replace the system-board shield.
See "Replacing the System-Board Shield" on page 51.
- 6 Replace the VESA-mount bracket.
See "Replacing the VESA-Mount Bracket" on page 44.
- 7 Replace the back cover. See "Replacing the Back Cover" on page 24.
- 8 Replace the stand. See "Replacing the Stand" on page 21.
- 9 Follow the instructions in "After Working Inside Your Computer" on page 13.

Infrared Port

 **WARNING:** Before working inside your computer, read the safety information that shipped with your computer and follow the steps in "Before You Begin" on page 11. For additional safety best practices information, see the Regulatory Compliance Homepage at dell.com/regulatory_compliance.

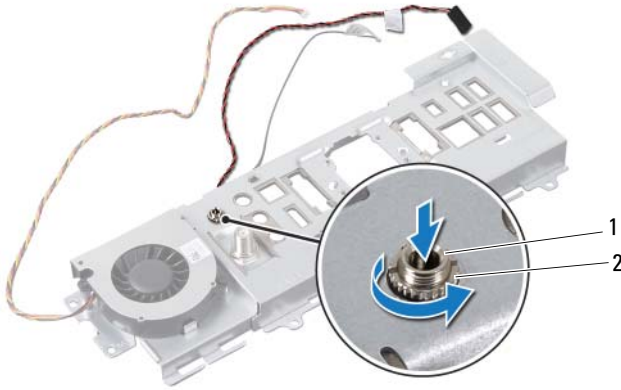
Removing the Infrared Port

Prerequisites

- 1 Remove the stand. See "Removing the Stand" on page 19.
- 2 Remove the back cover. See "Removing the Back Cover" on page 23.
- 3 Remove the VESA-mount bracket.
See "Removing the VESA-Mount Bracket" on page 43.
- 4 Remove the system-board shield.
See "Removing the System-Board Shield" on page 49.
- 5 Remove the power-supply fan bracket.
See "Removing the Power-Supply Fan Bracket" on page 77.
- 6 Remove the B-CAS card. See "Removing the B-CAS Card" on page 25.
- 7 Remove the I/O cover. See "Removing the I/O Cover" on page 81.
- 8 Remove the I/O board shield.
See "Removing the I/O Board Shield" on page 85.

Procedure

- 1 Remove the nut that secures the infrared port to the I/O board shield.
- 2 Slide the infrared port along with its cable through the slot on the I/O board shield.



1 Infrared port

2 nut

Replacing the Infrared Port


Procedure

- 1 Slide the infrared port along with its cable through the slot on the I/O board shield.
- 2 Replace the nut that secures the infrared port to the I/O board shield.

Postrequisites

- 1 Replace the I/O board shield.
See "Replacing the I/O Board Shield" on page 88.
- 2 Replace the I/O cover. See "Replacing the I/O Cover" on page 83.
- 3 Replace the B-CAS card. See "Replacing the B-CAS card" on page 27.
- 4 Replace the power-supply fan bracket.
See "Replacing the Power-Supply Fan Bracket" on page 79.
- 5 Replace the system-board shield.
See "Replacing the System-Board Shield" on page 51.
- 6 Replace the VESA-mount bracket.
See "Replacing the VESA-Mount Bracket" on page 44.
- 7 Replace the back cover. See "Replacing the Back Cover" on page 24.
- 8 Replace the stand. See "Replacing the Stand" on page 21.
- 9 Follow the instructions in "After Working Inside Your Computer" on page 13.

I/O Board

 **WARNING:** Before working inside your computer, read the safety information that shipped with your computer and follow the steps in "Before You Begin" on page 11. For additional safety best practices information, see the Regulatory Compliance Homepage at dell.com/regulatory_compliance.

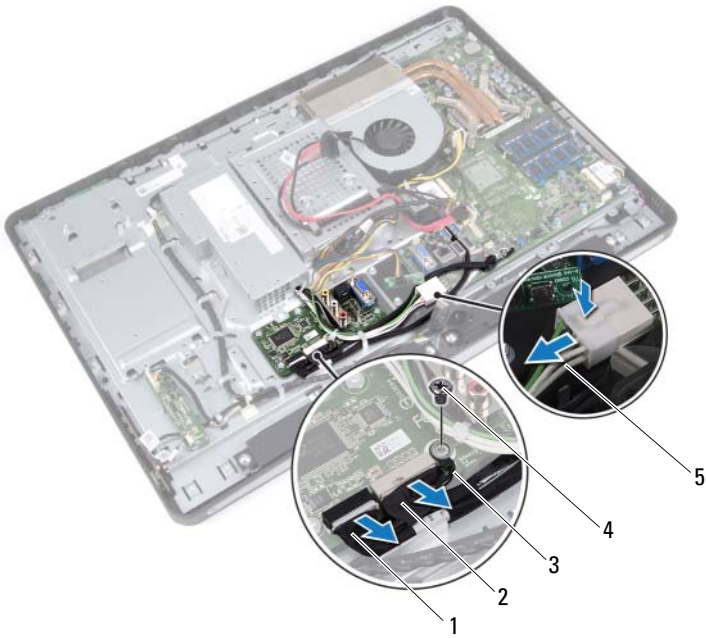
Removing the I/O Board

Prerequisites

- 1 Remove the stand. See "Removing the Stand" on page 19.
- 2 Remove the back cover. See "Removing the Back Cover" on page 23.
- 3 Remove the VESA-mount bracket.
See "Removing the VESA-Mount Bracket" on page 43.
- 4 Remove the system-board shield.
See "Removing the System-Board Shield" on page 49.
- 5 Remove the power-supply fan bracket.
See "Removing the Power-Supply Fan Bracket" on page 77.
- 6 Remove the B-CAS card. See "Removing the B-CAS Card" on page 25.
- 7 Remove the I/O cover. See "Removing the I/O Cover" on page 81.
- 8 Remove the I/O board shield.
See "Removing the I/O Board Shield" on page 85.

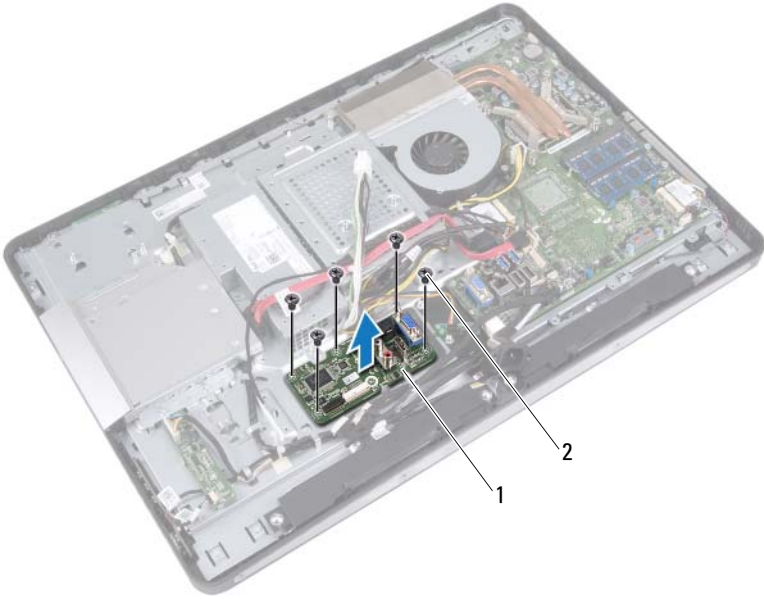
Procedure

- 1 Disconnect the main power cable from the system-board connector and move it away from the I/O board.
- 2 Remove the screw that secures the grounding cable to the chassis.
- 3 Disconnect the display cable and AV-in cable from the connectors on the I/O board.



- 1 display cable
- 2 AV-in cable
- 3 grounding cable
- 4 screw
- 5 main power cable

- 4 Remove the screws that secure the I/O board to the chassis.
- 5 Lift the I/O board off the chassis.



1 I/O board

2 screws (5)

Replacing the I/O Board


Procedure


- 1 Align the screw holes on the I/O board with the screw holes on the chassis.
- 2 Replace the screws that secure the I/O board to chassis.
- 3 Connect the display cable and AV-in cable to the connectors on the I/O board.
- 4 Replace the screw that secures the grounding cable to the chassis.
- 5 Connect the main power cable to the system-board connector.

Postrequisites


- 1 Replace the I/O board shield.
See "Replacing the I/O Board Shield" on page 88.
- 2 Replace the I/O cover. See "Replacing the I/O Cover" on page 83.
- 3 Replace the BCAS card. See "Replacing the B-CAS card" on page 27.
- 4 Replace the power-supply fan bracket.
See "Replacing the Power-Supply Fan Bracket" on page 79.
- 5 Replace the system-board shield.
See "Replacing the System-Board Shield" on page 51.
- 6 Replace the VESA-mount bracket.
See "Replacing the VESA-Mount Bracket" on page 44.
- 7 Replace the back cover. See "Replacing the Back Cover" on page 24.
- 8 Replace the stand. See "Replacing the Stand" on page 21.
- 9 Follow the instructions in "After Working Inside Your Computer" on page 13.

Coin-Cell Battery

 **WARNING:** Before working inside your computer, read the safety information that shipped with your computer and follow the steps in "Before You Begin" on page 11. For additional safety best practices information, see the Regulatory Compliance Homepage at dell.com/regulatory_compliance.

 **WARNING:** The battery may explode if installed incorrectly. Replace the battery only with the same or equivalent type. Discard used batteries according to the manufacturer's instructions.

Removing the Coin-Cell Battery

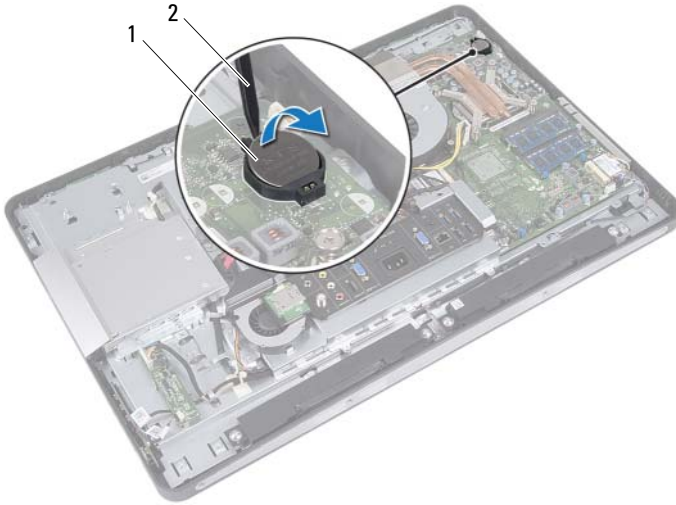
 **CAUTION:** Removing the coin-cell battery resets the BIOS settings to default. It is recommended that you note the BIOS settings before removing the coin-cell battery.

Prerequisites

- 1 Remove the stand. See "Removing the Stand" on page 19.
- 2 Remove the back cover. See "Removing the Back Cover" on page 23.
- 3 Remove the VESA-mount bracket.
See "Removing the VESA-Mount Bracket" on page 43.
- 4 Remove the system-board shield.
See "Removing the System-Board Shield" on page 49.

Procedure

Using a plastic scribe, gently pry out the coin-cell battery from the battery socket on the system board.



1 coin-cell battery

2 plastic scribe

Replacing the Coin-Cell Battery


Procedure

With the positive-side facing up, snap the coin-cell battery into the battery socket on the system board.


Postrequisites


- 1** Replace the system-board shield.
See "Replacing the System-Board Shield" on page 51.
- 2** Replace the VESA-mount bracket.
See "Replacing the VESA-Mount Bracket" on page 44.
- 3** Replace the back cover. See "Replacing the Back Cover" on page 24.
- 4** Replace the stand. See "Replacing the Stand" on page 21.
- 5** Update the BIOS with values you may have noted before removing the coin-cell battery. See "Entering System Setup" on page 143.
- 6** Follow the instructions in "After Working Inside Your Computer" on page 13.

System Board

 **WARNING:** Before working inside your computer, read the safety information that shipped with your computer and follow the steps in "Before You Begin" on page 11. For additional safety best practices information, see the Regulatory Compliance Homepage at dell.com/regulatory_compliance.

Removing the System Board

 **NOTE:** Your computer's Service Tag is stored in the system board. You must enter the Service Tag in the BIOS after you replace the system board.

 **NOTE:** Before disconnecting the cables from the system board, note the location of the connectors so that you can reconnect them correctly after you replace the system board.

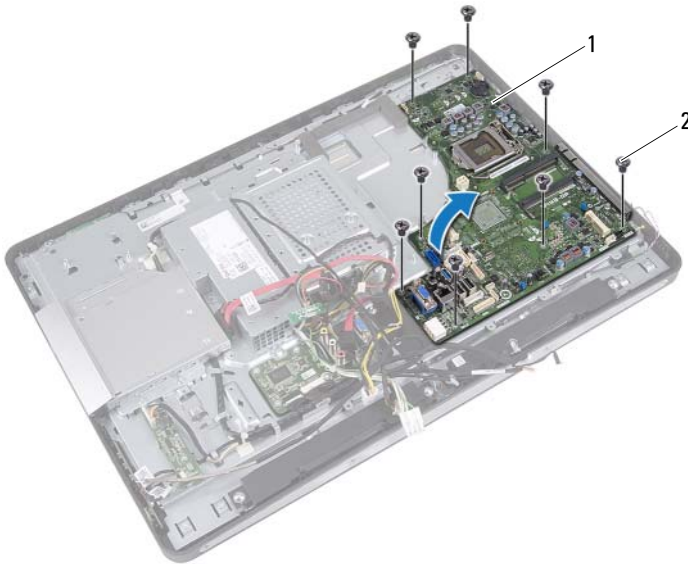
Prerequisites

- 1 Remove the stand. See "Removing the Stand" on page 19.
- 2 Remove the back cover. See "Removing the Back Cover" on page 23.
- 3 Remove the VESA-mount bracket.
See "Removing the VESA-Mount Bracket" on page 43.
- 4 Remove the system-board shield.
See "Removing the System-Board Shield" on page 49
- 5 Remove the memory modules.
See "Removing the Memory Module(s)" on page 35.
- 6 Remove the power-supply fan bracket.
See "Removing the Power-Supply Fan Bracket" on page 77.
- 7 Remove the B-CAS card. See "Removing the B-CAS Card" on page 25.
- 8 Remove the I/O cover. See "Removing the I/O Cover" on page 81.
- 9 Remove the I/O board shield.
See "Removing the I/O Board Shield" on page 85.
- 10 Remove the processor heat-sink.
See "Removing the Processor Heat-Sink" on page 65.

- 11** Remove the processor heat-sink fan.
See "Removing the Processor Heat-Sink Fan" on page 69.
- 12** Remove the processor. See "Removing the Processor" on page 73.
- 13** Remove the TV tuner card.
See "Removing the TV Tuner Card" on page 53.
- 14** Remove the wireless mini-card.
See "Removing the Wireless Mini-Card" on page 57.

Procedure

- 1** Disconnect all the cables from the system-board connectors.
- 2** Remove the screws that secure the system board to the chassis.
- 3** Gently lift the system board to the side of your computer and remove the system board off the chassis.



1 system board

2 screws (8)

Replacing the System Board

Procedure

- 1 Align the screw holes on the system board with the screw holes on the chassis.
- 2 Replace the screws that secure the system board to the chassis.
- 3 Connect all the cables to the system-board connectors.

Postrequisites

- 1 Replace the wireless mini-card.
See "Replacing the Wireless Mini-Card" on page 59.
- 2 Replace the TV tuner card. See "Replacing the TV Tuner Card" on page 56.
- 3 Replace the processor. See "Replacing the Processor" on page 75.
- 4 Replace the processor heat-sink fan.
See "Replacing the Processor Heat-Sink Fan" on page 71.
- 5 Replace the processor heat-sink.
See "Replacing the Processor Heat-Sink" on page 67.
- 6 Replace the I/O board shield.
See "Replacing the I/O Board Shield" on page 88.
- 7 Replace the I/O cover. See "Replacing the I/O Cover" on page 83.
- 8 Replace the B-CAS card. See "Replacing the B-CAS card" on page 27.
- 9 Replace the power-supply fan bracket.
See "Replacing the Power-Supply Fan Bracket" on page 79.
- 10 Replace the memory modules.
See "Replacing the Memory Module(s)" on page 37.
- 11 Replace the system-board shield.
See "Replacing the System-Board Shield" on page 51.
- 12 Replace the VESA-mount bracket.
See "Replacing the VESA-Mount Bracket" on page 44.
- 13 Replace the back cover. See "Replacing the Back Cover" on page 24.
- 14 Replace the stand. See "Replacing the Stand" on page 21.
- 15 Follow the instructions in "After Working Inside Your Computer" on page 13.

Entering the Service Tag in the BIOS

- 1 Turn on the computer.
- 2 Press <F2> during POST to enter the system setup program.
- 3 Navigate to the main tab and enter the Service Tag in the Service Tag Setting field.

Antenna Module(s)



WARNING: Before working inside your computer, read the safety information that shipped with your computer and follow the steps in "Before You Begin" on page 11. For additional safety best practices information, see the Regulatory Compliance Homepage at dell.com/regulatory_compliance.

Removing the Antenna Module(s)

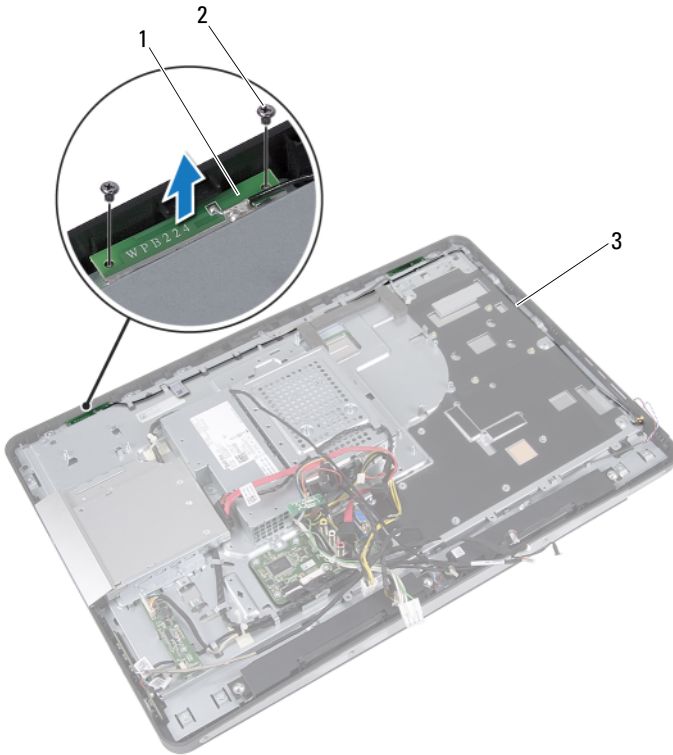
Prerequisites

- 1 Remove the stand. See "Removing the Stand" on page 19.
- 2 Remove the back cover. See "Removing the Back Cover" on page 23.
- 3 Follow the instructions from step 1 to step 3 in "Removing the Optical Drive" on page 39.
- 4 Remove the B-CAS card. See "Removing the B-CAS Card" on page 25.
- 5 Remove the power-button board.
See "Removing the Power-Button Board" on page 33.
- 6 Remove the converter board.
See "Removing the Converter Board" on page 29.
- 7 Remove the VESA-mount bracket.
See "Removing the VESA-Mount Bracket" on page 43.
- 8 Follow the instructions from step 1 to step 5 in "Removing the Hard Drive" on page 45.
- 9 Remove the system-board shield.
See "Removing the System-Board Shield" on page 49.
- 10 Remove the TV tuner card.
See "Removing the TV Tuner Card" on page 53.
- 11 Remove the memory modules.
See "Removing the Memory Module(s)" on page 35.
- 12 Remove the wireless mini-card.
See "Removing the Wireless Mini-Card" on page 57.

- 13** Remove the I/O cover. See "Removing the I/O Cover" on page 81.
- 14** Remove the power-supply fan bracket.
See "Removing the Power-Supply Fan Bracket" on page 77.
- 15** Remove the I/O board shield.
See "Removing the I/O Board Shield" on page 85.
- 16** Follow the instructions from step 1 to step 3 in "Removing the System Board" on page 113.

Procedure

- 1 Remove the screws that secure the antenna modules to the chassis.
- 2 Make a note of the antenna-cable routing and remove the antenna cables from the routing guides on the chassis.
- 3 Lift the antenna modules off the chassis.



1 antenna modules (2)

2 screws (4; 2 on each antenna module)

3 antenna cable routing

Replacing the Antenna Module(s)

Procedure

- 1 Align the screw holes on the antenna modules with the screw holes on the chassis.
- 2 Replace the screws that secure the antenna modules to the chassis.
- 3 Route the antenna cables through the routing guides on the chassis.

Postrequisites

- 1 Follow the instructions from step 1 to step 3 in "Replacing the System Board" on page 115.
- 2 Replace the I/O board shield.
See "Replacing the I/O Board Shield" on page 88.
- 3 Replace the power-supply fan bracket.
See "Replacing the Power-Supply Fan Bracket" on page 79.
- 4 Replace the I/O cover. See "Replacing the I/O Cover" on page 83.
- 5 Replace the wireless mini-card.
See "Replacing the Wireless Mini-Card" on page 59.
- 6 Replace the memory modules.
See "Replacing the Memory Module(s)" on page 37.
- 7 Replace the TV tuner card. See "Replacing the TV Tuner Card" on page 56.
- 8 Replace the system-board shield.
See "Replacing the System-Board Shield" on page 51.
- 9 Follow the instructions from step 4 to step 8 in "Replacing the Hard Drive" on page 48.
- 10 Replace the VESA-mount bracket.
See "Replacing the VESA-Mount Bracket" on page 44.
- 11 Replace converter board. See "Replacing the Converter Board" on page 31.
- 12 Replace power-button board.
See "Replacing the Power-Button Board" on page 34.
- 13 Replace B-CAS card. See "Replacing the B-CAS card" on page 27.

- 14** Follow the instructions from step 4 to step 6 in "Replacing the Optical Drive" on page 42.
- 15** Replace the back cover. See "Replacing the Back Cover" on page 24.
- 16** Replace the stand. See "Replacing the Stand" on page 21.
- 17** Follow the instructions in "After Working Inside Your Computer" on page 13.

Display Panel



WARNING: Before working inside your computer, read the safety information that shipped with your computer and follow the steps in "Before You Begin" on page 11. For additional safety best practices information, see the Regulatory Compliance Homepage at dell.com/regulatory_compliance.

Removing the Display Panel

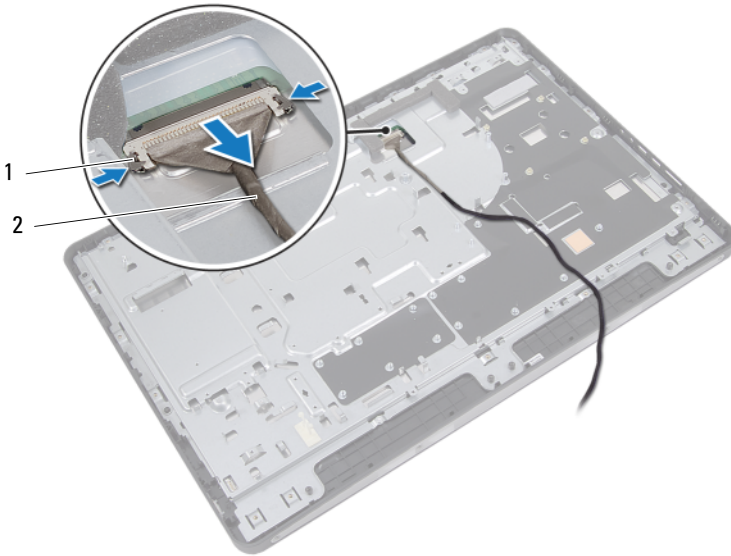
Prerequisites

- 1 Remove the stand. See "Removing the Stand" on page 19.
- 2 Remove the back cover. See "Removing the Back Cover" on page 23.
- 3 Follow the instructions from step 1 to step 3 in "Removing the Optical Drive" on page 39.
- 4 Remove the B-CAS card. See "Removing the B-CAS Card" on page 25.
- 5 Remove the power-button board.
See "Removing the Power-Button Board" on page 33.
- 6 Remove the converter board.
See "Removing the Converter Board" on page 29.
- 7 Remove the VESA-mount bracket.
See "Removing the VESA-Mount Bracket" on page 43.
- 8 Follow the instructions from step 1 to step 5 in "Removing the Hard Drive" on page 45.
- 9 Remove the system-board shield.
See "Removing the System-Board Shield" on page 49.
- 10 Remove the TV tuner card.
See "Removing the TV Tuner Card" on page 53.
- 11 Remove the memory modules.
See "Removing the Memory Module(s)" on page 35.
- 12 Remove the wireless mini-card.
See "Removing the Wireless Mini-Card" on page 57.

- 13** Remove the power-supply fan bracket.
See "Removing the Power-Supply Fan Bracket" on page 77.
- 14** Remove the B-CAS card. See "Removing the B-CAS Card" on page 25.
- 15** Remove the I/O cover. See "Removing the I/O Cover" on page 81.
- 16** Remove the I/O board shield.
See "Removing the I/O Board Shield" on page 85.
- 17** Remove the power-supply unit.
See "Removing the Power-Supply Unit" on page 89.
- 18** Remove the speakers. See "Removing the Speakers" on page 61.
- 19** Remove the I/O board. See "Removing the I/O Board" on page 105.
- 20** Remove the processor heat-sink.
See "Removing the Processor Heat-Sink" on page 65.
- 21** Remove the processor heat-sink fan.
See "Removing the Processor Heat-Sink Fan" on page 69.
- 22** Follow the instructions from step 1 to step 3 in "Removing the System Board" on page 113.

Procedure

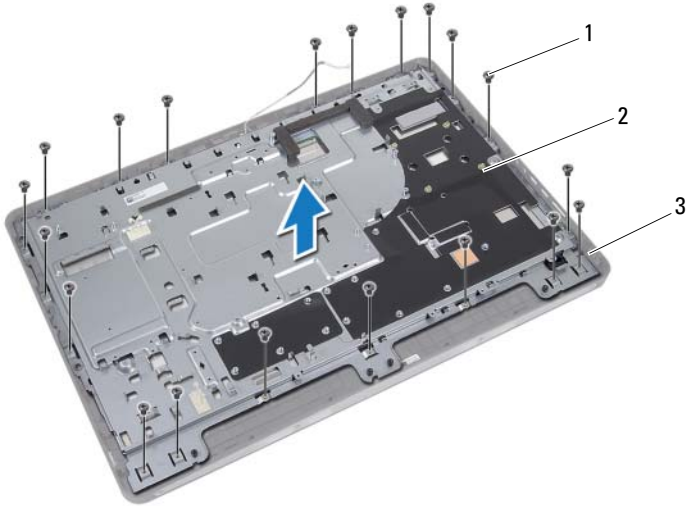
- 1 Press the release latches on each side of the display cable, and then pull the cable to disconnect it from the connector on the display panel.



1 release latches (2)

2 display cable

- 2 Remove the screws that secure the the chassis to the middle frame.
- 3 Lift the chassis off the middle frame.



- 1 screws (20)
- 3 middle frame

2 chassis

4 Gently lift the display assembly off the middle frame.

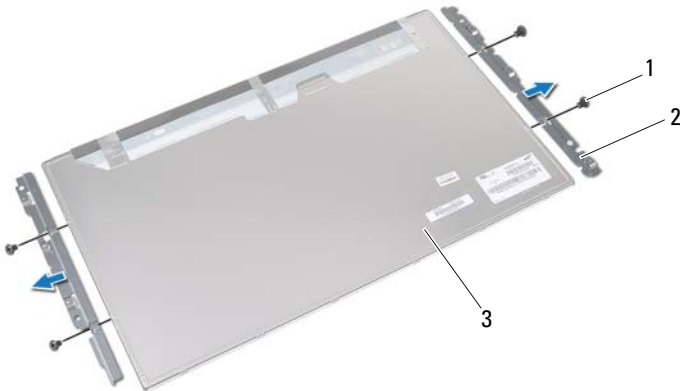


1 display assembly

2 middle frame

5 Remove the screws that secure the display brackets to the display panel.

6 Remove the display brackets off the display panel.



1 screws (4)

2 display brackets (2)

3 display panel

Replacing the Display Panel

Procedure


- 1 Align the screw holes on the display brackets with the screw holes on the display panel.
- 2 Replace the screws that secure the display brackets to the display panel.
- 3 Gently place the display panel over the middle frame.
- 4 Place the chassis over the display panel and align the screw holes on the chassis with the screw holes on the middle frame.
- 5 Replace the screws that secure the chassis to the middle frame.
- 6 Connect the display cable to the connector on the display panel.

Postrequisites

- 7 Follow the instructions from step 1 to step 3 in "Replacing the System Board" on page 115.
- 8 Replace the processor heat-sink fan.
See "Replacing the Processor Heat-Sink Fan" on page 71.
- 9 Replace the processor heat-sink.
See "Replacing the Processor Heat-Sink" on page 67.
- 10 Replace the I/O board. See "Replacing the I/O Board" on page 108.
- 11 Replace the speakers. See "Replacing the Speakers" on page 63.
- 12 Replace the power-supply unit.
See "Replacing the Power-Supply Unit" on page 91.
- 13 Replace the I/O board shield.
See "Replacing the I/O Board Shield" on page 88.
- 14 Replace the I/O cover. See "Replacing the I/O Cover" on page 83.
- 15 Replace the B-CAS card. See "Replacing the B-CAS card" on page 27.
- 16 Replace the power-supply fan bracket.
See "Replacing the Power-Supply Fan Bracket" on page 79.
- 17 Replace the wireless mini-card.
See "Replacing the Wireless Mini-Card" on page 59.

- 18** Replace the memory modules.
See "Replacing the Memory Module(s)" on page 37.
- 19** Replace the TV tuner card. See "Replacing the TV Tuner Card" on page 56.
- 20** Replace the system-board shield.
See "Replacing the System-Board Shield" on page 51.
- 21** Follow the instructions from step 4 to step 8 in replacing the hard-drive
- 22** Replace the VESA-mount bracket.
See "Replacing the VESA-Mount Bracket" on page 44.
- 23** Replace converter board. See "Replacing the Converter Board" on page 31.
- 24** Replace power-button board.
See "Replacing the Power-Button Board" on page 34.
- 25** Replace B-CAS card. See "Replacing the B-CAS card" on page 27.
- 26** Follow the instructions from step 4 to step 6 in replacing the optical-drive
- 27** Replace the back cover. See "Replacing the Back Cover" on page 24.
- 28** Replace the stand. See "Replacing the Stand" on page 21.
- 29** Follow the instructions in "After Working Inside Your Computer" on page 13.

Infrared Sensor

 **WARNING:** Before working inside your computer, read the safety information that shipped with your computer and follow the steps in "Before You Begin" on page 11. For additional safety best practices information, see the Regulatory Compliance Homepage at dell.com/regulatory_compliance.

Removing the Infrared Sensor

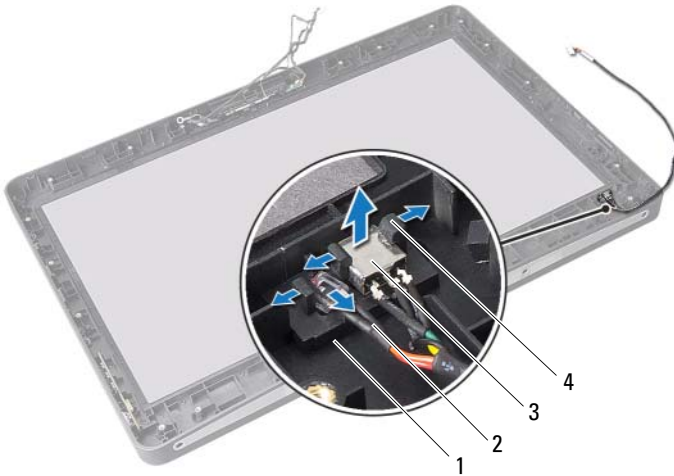
Prerequisites

- 1 Remove the stand. See "Removing the Stand" on page 19.
- 2 Remove the back cover. See "Removing the Back Cover" on page 23.
- 3 Follow the instructions from step 1 to step 3 in "Removing the Optical Drive" on page 39.
- 4 Remove the B-CAS card. See "Removing the B-CAS Card" on page 25.
- 5 Remove the power-button board.
See "Removing the Power-Button Board" on page 33.
- 6 Remove the converter board.
See "Removing the Converter Board" on page 29.
- 7 Remove the VESA-mount bracket.
See "Removing the VESA-Mount Bracket" on page 43.
- 8 Follow the instructions from step 1 to step 5 in "Removing the Hard Drive" on page 45.
- 9 Remove the system-board shield.
See "Removing the System-Board Shield" on page 49.
- 10 Remove the TV tuner card.
See "Removing the TV Tuner Card" on page 53.
- 11 Remove the memory modules.
See "Removing the Memory Module(s)" on page 35.
- 12 Remove the wireless mini-card.
See "Removing the Wireless Mini-Card" on page 57.

- 13** Remove the power-supply fan bracket.
See "Removing the Power-Supply Fan Bracket" on page 77.
- 14** Remove the B-CAS card. See "Removing the B-CAS Card" on page 25.
- 15** Remove the I/O cover. See "Removing the I/O Cover" on page 81.
- 16** Remove the I/O board shield.
See "Removing the I/O Board Shield" on page 85.
- 17** Remove the power-supply unit.
See "Removing the Power-Supply Unit" on page 89.
- 18** Remove the speakers. See "Removing the Speakers" on page 61.
- 19** Remove the I/O board. See "Removing the I/O Board" on page 105.
- 20** Remove the processor heat-sink.
See "Removing the Processor Heat-Sink" on page 65.
- 21** Remove the processor heat-sink fan.
See "Removing the Processor Heat-Sink Fan" on page 69.
- 22** Follow the instructions from step 1 to step 3 in "Removing the System Board" on page 113.
- 23** Remove the display panel. See "Removing the Display Panel" on page 123.

Procedure

- 1 Using your fingertips, carefully spread apart the tabs that secure the infrared sensor to the middle frame.
- 2 Lift the infrared sensor off the middle frame.
- 3 Using your finger tips, carefully spread apart the tabs that secure the infrared LED to the middle frame.
- 4 Slide and remove the infrared LED off the middle frame.



- 1 middle frame
3 infrared sensor

- 2 infrared LED
4 tabs

Replacing the Infrared Sensor

Procedure

- 1 Slide the infrared LED into the slot on the middle frame. Ensure that the infrared LED is secured under the tabs on the middle frame.
- 2 Place the infrared sensor over the slot on the middle frame and snap it into place.

Postrequisites

- 1 Replace the display panel. See "Replacing the Display Panel" on page 128.
- 2 Follow the instructions from step 1 to step 3 in "Replacing the System Board" on page 115.
- 3 Replace the processor heat-sink fan.
See "Replacing the Processor Heat-Sink Fan" on page 71.
- 4 Replace the processor heat-sink.
See "Replacing the Processor Heat-Sink" on page 67.
- 5 Replace the I/O board. See "Replacing the I/O Board" on page 108.
- 6 Replace the speakers. See "Replacing the Speakers" on page 63.
- 7 Replace the power-supply unit.
See "Replacing the Power-Supply Unit" on page 91.
- 8 Replace the I/O board shield.
See "Replacing the I/O Board Shield" on page 88.
- 9 Replace the I/O cover. See "Replacing the I/O Cover" on page 83.
- 10 Replace the B-CAS card. See "Replacing the B-CAS card" on page 27.
- 11 Replace the power-supply fan bracket.
See "Replacing the Power-Supply Fan Bracket" on page 79.
- 12 Replace the wireless mini-card.
See "Replacing the Wireless Mini-Card" on page 59.
- 13 Replace the memory modules.
See "Replacing the Memory Module(s)" on page 37.
- 14 Replace the TV tuner card. See "Replacing the TV Tuner Card" on page 56.

- 15** Replace the system-board shield.
See "Replacing the System-Board Shield" on page 51.
- 16** Follow the instructions from step 4 to step 8 in "Replacing the Hard Drive" on page 48.
- 17** Replace the VESA-mount bracket.
See "Replacing the VESA-Mount Bracket" on page 44.
- 18** Replace converter board. See "Replacing the Converter Board" on page 31.
- 19** Replace power-button board.
See "Replacing the Power-Button Board" on page 34.
- 20** Replace B-CAS card. See "Replacing the B-CAS card" on page 27.
- 21** Follow the instructions from step 4 to step 6 in "Replacing the Optical Drive" on page 42.
- 22** Replace the back cover. See "Replacing the Back Cover" on page 24.
- 23** Replace the stand. See "Replacing the Stand" on page 21.
- 24** Follow the instructions in "After Working Inside Your Computer" on page 13.

Camera Module



WARNING: Before working inside your computer, read the safety information that shipped with your computer and follow the steps in "Before You Begin" on page 11. For additional safety best practices information, see the Regulatory Compliance Homepage at dell.com/regulatory_compliance.

Removing the Camera Module

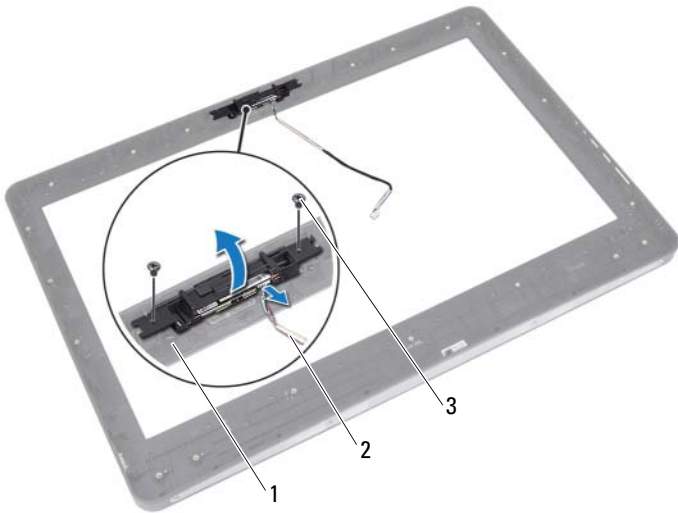
Prerequisites

- 1 Remove the stand. See "Removing the Stand" on page 19.
- 2 Remove the back cover. See "Removing the Back Cover" on page 23.
- 3 Follow the instructions from step 1 to step 3 in "Removing the Optical Drive" on page 39.
- 4 Remove the B-CAS card. See "Removing the B-CAS Card" on page 25.
- 5 Remove the power-button board.
See "Removing the Power-Button Board" on page 33.
- 6 Remove the converter board.
See "Removing the Converter Board" on page 29.
- 7 Remove the VESA-mount bracket.
See "Removing the VESA-Mount Bracket" on page 43.
- 8 Follow the instructions from step 1 to step 5 in "Removing the Hard Drive" on page 45.
- 9 Remove the system-board shield.
See "Removing the System-Board Shield" on page 49.
- 10 Remove the TV tuner card.
See "Removing the TV Tuner Card" on page 53.
- 11 Remove the memory modules.
See "Removing the Memory Module(s)" on page 35.
- 12 Remove the wireless mini-card.
See "Removing the Wireless Mini-Card" on page 57.

- 13** Remove the power-supply fan bracket.
See "Removing the Power-Supply Fan Bracket" on page 77.
- 14** Remove the B-CAS card. See "Removing the B-CAS Card" on page 25.
- 15** Remove the I/O cover. See "Removing the I/O Cover" on page 81.
- 16** Remove the I/O board shield.
See "Removing the I/O Board Shield" on page 85.
- 17** Remove the power-supply unit.
See "Removing the Power-Supply Unit" on page 89.
- 18** Remove the speakers. See "Removing the Speakers" on page 61.
- 19** Remove the I/O board. See "Removing the I/O Board" on page 105.
- 20** Remove the processor heat-sink.
See "Removing the Processor Heat-Sink" on page 65.
- 21** Remove the processor heat-sink fan.
See "Removing the Processor Heat-Sink Fan" on page 69.
- 22** Follow the instructions from step 1 to step 3 in "Removing the System Board" on page 113.
- 23** Remove the display panel. See "Removing the Display Panel" on page 123.

Procedure

- 1 Disconnect the camera cable from the connector on the camera module.
- 2 Remove the screws that secure the camera module to the middle frame.
- 3 Lift the camera module off the middle frame.



- 1 middle frame
3 screws (2)

- 2 camera cable

Replacing the Camera Module

Procedure

- 1 Align the screw holes on the camera module with the screw holes on the middle frame.
- 2 Replace the screws that secure the camera module to the middle frame.
- 3 Connect the camera cable to the connector on the camera module.

Postrequisites

- 1 Replace the display panel. See "Replacing the Display Panel" on page 128.
- 2 Follow the instructions from step 1 to step 3 in "Replacing the System Board" on page 115.
- 3 Replace the processor heat-sink fan.
See "Replacing the Processor Heat-Sink Fan" on page 71.
- 4 Replace the processor heat-sink.
See "Replacing the Processor Heat-Sink" on page 67.
- 5 Replace the I/O board. See "Replacing the I/O Board" on page 108.
- 6 Replace the speakers. See "Replacing the Speakers" on page 63.
- 7 Replace the power-supply unit.
See "Replacing the Power-Supply Unit" on page 91.
- 8 Replace the I/O board shield.
See "Replacing the I/O Board Shield" on page 88.
- 9 Replace the I/O cover. See "Replacing the I/O Cover" on page 83.
- 10 Replace the B-CAS card. See "Replacing the B-CAS card" on page 27.
- 11 Replace the power-supply fan bracket.
See "Replacing the Power-Supply Fan Bracket" on page 79.
- 12 Replace the wireless mini-card.
See "Replacing the Wireless Mini-Card" on page 59.
- 13 Replace the memory modules.
See "Replacing the Memory Module(s)" on page 37.
- 14 Replace the TV tuner card. See "Replacing the TV Tuner Card" on page 56.

- 15** Replace the system-board shield.
See "Replacing the System-Board Shield" on page 51.
- 16** Follow the instructions from step 4 to step 8 in "Replacing the Hard Drive" on page 48.
- 17** Replace the VESA-mount bracket.
See "Replacing the VESA-Mount Bracket" on page 44.
- 18** Replace converter board. See "Replacing the Converter Board" on page 31.
- 19** Replace power-button board.
See "Replacing the Power-Button Board" on page 34.
- 20** Replace B-CAS card. See "Replacing the B-CAS card" on page 27.
- 21** Follow the instructions from step 4 to step 6 in "Removing the Optical Drive" on page 39.
- 22** Replace the back cover. See "Replacing the Back Cover" on page 24.
- 23** Replace the stand. See "Replacing the Stand" on page 21.
- 24** Follow the instructions in "After Working Inside Your Computer" on page 13.

System Setup

Overview

Use the system setup to:

- Get information about the hardware installed on your computer, such as the amount of RAM, the size of the hard drive, and so on
- Change the system configuration information
- Set or change a user-selectable option, such as the user password, type of hard drive installed, enabling or disabling base devices, and so on



NOTE: Before you change system setup, it is recommended that you write down the system setup screen information for future reference.

Entering System Setup

- 1 Turn on (or restart) your computer.
- 2 During POST, when the DELL logo is displayed, watch for the F2 prompt to appear and then press <F2> immediately.



NOTE: The F2 prompt indicates that the keyboard has initialized. This prompt can appear very quickly, so you must watch for it, and then press <F2>. If you press <F2> before the F2 prompt, this keystroke is lost. If you wait too long and the operating system logo appears, continue to wait until you see the Microsoft Windows desktop. Then, turn off your computer and try again. See "Turn Off Your Computer and Connected Devices" on page 11.

System Setup Screens

The system setup screen displays current or changeable configuration information for your computer. Information on the screen is divided into three areas: the **setup item**, active **help screen**, and **key functions**.

<p>Setup Item — This field appears on the left side of the system setup window. The field is a scrollable list containing features that define the configuration of your computer, including installed hardware, power conservation, and security features. Scroll up and down the list with the up- and down-arrow keys. As an option is highlighted, the Help Screen displays more information about that option and available settings.</p>	<p>Help Screen — This field appears on the right side of the system setup window and contains information about each option listed in the Setup Item. In this field you can view information about your computer and make changes to your current settings. Press the up- and down-arrow keys to highlight an option. Press <Enter> to make that selection active and return to the Setup Item.</p> <p>NOTE: Not all settings listed in the Setup Item are changeable.</p>
<p>Key Functions — This field appears below the Help Screen and lists keys and their functions within the active system setup field.</p>	

System Setup Options



NOTE: Depending on your computer and installed devices, the items listed in this section may appear, or may not appear exactly as listed.

Main — System Information

BIOS Revision	Display the BIOS revision number
BIOS Build Date	Displays the BIOS build date
System Name	Displays the system name
System Time	Displays the system time in hh:mm:ss format
System Date	Displays the system date in mm:dd:yy format
Service Tag	Displays the Service Tag of your computer, if present
Service Tag Input	Displayed if the Service Tag is not present; Allows you to enter the Service Tag of your computer
Asset Tag	Displays the asset tag of the computer, if present

Main — Processor Information

Processor Type	Displays the processor type
Processor ID	Displays the processor ID
Processor Core Count	Displays the number of processor core(s)
Processor L1 Cache	Displays the processor L1 cache size
Processor L2 Cache	Displays the processor L2 cache size
Processor L3 Cache	Displays the processor L3 cache size

Main — Memory Information

Memory Installed	Displays the amount of memory installed in MB
Memory Available	Displays the amount of installed memory available
Memory Running Speed	Displays the speed of the installed memory in MHz
Memory Technology	Displays the type of memory installed on your computer, such as DDR3

Main — SATA Information

SATA 1

Device Type	Displays the type of device installed on the SATA1 connector
Device ID	Displays the serial number of the device installed
Device Size	Displays the size of the device installed, if the device is a hard drive

SATA 2

Device Type	Displays the type of device installed on the SATA2 connector
Device ID	Displays the serial number of the device installed
Device Size	Displays the size of the device installed, if the device is a hard drive

Advanced — CPU Feature

Intel(R) SpeedStep Technology	Allows you to enable or disable the Intel SpeedStep feature for the processor Enabled or Disabled (Enabled by default)
Intel(R) Virtualization Technology	Allows you to enable or disable the Intel virtualization feature for the processor Enabled or Disabled (Enabled by default)
CPU XD Support	Allows you to enable or disable the execute disable mode for the processor Enabled or Disabled (Enabled by default)
Limit CPUID Value	Allows you to limit the maximum value the processor standard CPUID function will support Enabled or Disabled (Disabled by default)
Multi Core Support	Allows you to specify if processor will have either one or all cores enabled Enabled or Disabled (Enabled by default) Enabled - all cores; Disabled - one core only
Intel(R) Turbo Boot Technology	Allows you to enable or disable the Intel turbo boot technology mode for the processor Enabled or Disabled (Enabled by default)

Advanced — USB Configuration

Rear USB Ports	Allows you to enable or disable the rear USB ports on your computer Enabled or Disabled (Enabled by default)
Side USB Ports	Allows you to enable or disable the side USB ports on your computer Enabled or Disabled (Enabled by default)

Advanced — Onboard Device Configuration

Onboard Audio Controller	Allows you to enable or disabled the audio controller Enabled or Disable (Enabled by default)
SATA Mode	Allows you to configure the operating mode of the integrated hard-drive controller ATA Mode; AHCI Mode (AHCI Mode by default) CAUTION: Changing the SATA Mode may prevent booting of your operating system.
Onboard LAN Controller	Allows you to enable or disable the onboard LAN controller Enabled or Disabled (Enabled by default)
Onboard LAN boot ROM	Allows you to boot your computer from a network Enabled or Disabled (Disabled by default)

Power

Wake Up by Integrated LAN/WLAN	Allow the computer to be powered on by special LAN or wireless LAN signals Enabled or Disabled (Disabled by default)
AC Recovery	Allows you to configure the behavior of your computer after it recovers from a power failure Power Off, Power On, or Last Power State (Power Off by default)
DeepSx Power Policies	Allows you to configure the DeepSx mode Disabled, Enabled in S5, or Enabled in S4-S5 (Disabled by default)
Auto Power On	Allows you to enable or disable the computer from turning on automatically Enabled or Disabled (Disabled by default)

Power (continued)

Auto Power On Mode	Allows you to set the computer to turn on automatically every day or on a preselected date; This option can be configured only if the Auto Power On mode is set to Enabled Everyday or Selected Day (Selected Day by default)
Auto Power On Date	Allows you to set the date on which the computer must turn on automatically; This option can be configured only if the Auto Power On mode is set to Enabled 1 to 31 (15 by default)
Auto Power On Time	Allows you to set the time at which the computer must turn on automatically; This option can be configured only if the Auto Power On mode is set to Enabled hh:mm:ss (12:30:30 by default)

Security

Supervisor Password	Displays the status of the supervisor password
User Password	Displays the status of the user password
Set Supervisor Password	Allows you to set, change, or delete the supervisor password
User Access Level	Allows you to set access levels to the users No Access, View Only, Limited, or Full Access (Full Access by default) <ul style="list-style-type: none">• No Access: Restricts users from editing system setup options• View Only: Allows users to only view system setup options• Limited: Allows users to edit certain system setup options• Full Access: Allows users to edit all system setup options except the Supervisor Password

Security *(continued)*

Set User Password	Allows you to set, change, or delete the user password
Password Check	Allows you to enable password verification either when you attempt to enter system setup or each time the computer boots Setup or Always (Setup by default)

Boot

Numlock Key	Allows you to set the status of the Num Lock key during boot On or Off (On by default)
Keyboard Errors	Allows you to enable or disable the display of keyboard-related errors during boot Report or Do Not Report (Report by default)
USB Boot Support	Allows you to enable or disable booting from USB mass storage devices such as hard drive, optical drive, USB key, and so on Enable or Disable (Enabled by default)
Boot Mode	Specifies the boot sequence from the available devices
1st Boot	Displays the first boot device
2nd Boot	Displays the second boot device
3rd Boot	Displays the third boot device
4th Boot	Displays the fourth boot device
5th Boot	Displays the fifth boot device


Exit

Save Changes and Reset	Allows you to save changes and exit system setup
Discard Changes and Reset	Allows you to discard changes and exit system setup
Load Default	Allows you to restore the default settings

Boot Sequence

This feature allows you to change the boot sequence for devices.

Boot Options

- **Diskette Drive** — The computer attempts to boot from the floppy drive. If no operating system is on the drive, the computer generates an error message.
- **Hard Drive** — The computer attempts to boot from the primary hard drive. If no operating system is on the drive, the computer generates an error message.
- **CD/DVD/CD-RW Drive** — The computer attempts to boot from the optical drive. If no disc is in the drive, or if the disc is not bootable, the computer generates an error message.
- **USB Storage Device** — Insert the memory device into a USB port and restart the computer. When **F12 Boot Options** appears in the lower-right corner of the screen, press <F12>. The BIOS detects the device and adds the USB flash option to the boot menu.
 **NOTE:** To boot to a USB device, the device must be bootable. To ensure that your device is bootable, check the device documentation.
- **Network** — The computer attempts to boot from the network. If no operating system is found on the network, the computer generates an error message.

Changing Boot Sequence for the Current Boot

You can use this feature to change the current boot sequence, for example, to boot from the optical drive to run Dell Diagnostics from the *Drivers and Utilities* disc. The previous boot sequence is restored at the next boot.

- 1 If you are booting from a USB device, connect the USB device to a USB port.
- 2 Turn on (or restart) your computer.
- 3 When **F2 Setup**, **F12 Boot Options** appears in the lower-right corner of the screen, press <F12>.



NOTE: If you wait too long and the operating system logo appears, continue to wait until you see the Microsoft Windows desktop. Then, shut down your computer and try again.

The **Boot Device Menu** appears, listing all available boot devices.

- 4 On the **Boot Device Menu** choose the device you want to boot from.
For example, if you are booting to a USB memory key, highlight **USB Storage Device** and press <Enter>.

Changing Boot Sequence for Future Boots

- 1 Enter system setup. See "Entering System Setup" on page 105.
- 2 Use the arrow keys to highlight the **Boot** menu option and press <Enter> to access the menu.



NOTE: Write down your current boot sequence in case you want to restore it.

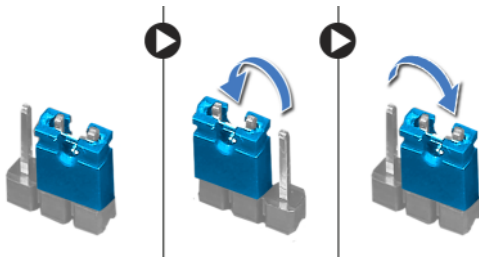
- 3 Press the up- and down-arrow keys to move through the list of devices.
- 4 Press plus (+) or minus (-) to change the boot priority of the device.

Clearing Forgotten Passwords

⚠ WARNING: Before working inside your computer, read the safety information that shipped with your computer and follow the steps in "Before You Begin" on page 11. For additional safety best practices information, see the Regulatory Compliance Homepage at dell.com/regulatory_compliance.

⚠ WARNING: The computer must be disconnected from the electrical outlet to clear the CMOS setting.

- 1 Remove the stand. See "Removing the Stand" on page 19.
- 2 Remove the back cover. See "Removing the Back Cover" on page 23.
- 3 Remove the VESA-mount bracket.
See "Removing the VESA-Mount Bracket" on page 43.
- 4 Remove the system-board shield.
See "Removing the System-Board Shield" on page 49.
- 5 Locate the 3-pin password reset jumper (E49) on the system board.
See "System Board Components" on page 17.
- 6 Remove the 2-pin jumper plug from pins 2 and 3 and fix it on pins 1 and 2.



- 7 Wait for approximately five seconds to clear the password setting.
- 8 Remove the 2-pin jumper plug from pins 1 and 2 and replace it on pins 2 and 3.
- 9 Replace the system-board shield.
See "Replacing the System-Board Shield" on page 51.
- 10 Replace the VESA-mount bracket.
See "Replacing the VESA-Mount Bracket" on page 44.

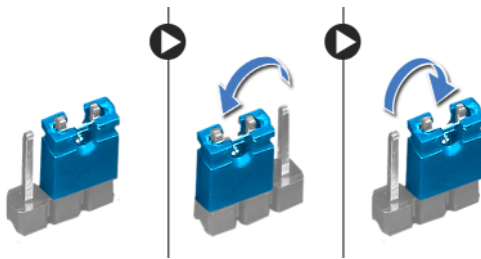
- 11** Replace the back cover. See "Replacing the Back Cover" on page 24.
- 12** Replace the stand. See "Replacing the Stand" on page 21.
- 13** Follow the steps in "After Working Inside Your Computer" on page 13.

Cleaning CMOS Settings

⚠ WARNING: Before working inside your computer, read the safety information that shipped with your computer and follow the steps in "Before You Begin" on page 11. For additional safety best practices information, see the Regulatory Compliance Homepage at dell.com/regulatory_compliance.

⚠ WARNING: The computer must be disconnected from the electrical outlet to clear the CMOS setting.

- 1 Remove the stand. See "Removing the Stand" on page 19.
- 2 Remove the back cover. See "Removing the Back Cover" on page 23.
- 3 Remove the VESA-mount bracket.
See "Removing the VESA-Mount Bracket" on page 43.
- 4 Remove the system-board shield.
See "Removing the System-Board Shield" on page 49.
- 5 Locate the 3-pin CMOS reset jumper (SW50) on the system board.
See "System Board Components" on page 17.
- 6 Remove the 2-pin jumper plug from pins 2 and 3 and fix it on pins 1 and 2.



- 7 Wait for approximately five seconds to clear the CMOS setting.
- 8 Remove the 2-pin jumper plug from pins 1 and 2 and replace it on pins 2 and 3.
- 9 Replace the system-board shield.
See "Replacing the System-Board Shield" on page 51.
- 10 Replace the VESA-mount bracket.
See "Replacing the VESA-Mount Bracket" on page 44.
- 11 Replace the back cover. See "Replacing the Back Cover" on page 24.

- 12** Replace the stand. See "Replacing the Stand" on page 21.
- 13** Follow the steps in "After Working Inside Your Computer" on page 13.

Flashing the BIOS

The BIOS may require flashing when an update is available or when replacing the system board. To flash the BIOS:

- 1 Turn on the computer.
- 2 Go to support.dell.com/support/downloads.
- 3 Locate the BIOS update file for your computer:



NOTE: The Service Tag for your computer is located on a label at the bottom of your computer. For more information, see the Quick Start Guide that shipped with your computer.

If you have your computer's Service Tag or Express Service Code:

- a Enter your computer's Service Tag or Express Service Code in the **Service Tag or Express Service Code** field.
- b Click **Submit** and proceed to step 4.

If you do not have your computer's Service Tag or Express Service Code:

- a Select one of the following options:
 - **Automatically detect my Service Tag for me**
 - **Choose from My Products and Services List**
 - **Choose from a list of all Dell products**
- b Click **Continue** and follow the instructions on the screen.
- 4 A list of results appears on the screen. Click **BIOS**.
- 5 Click **Download File** to download the latest BIOS file.
- 6 In the **Please select your download method below** window, click **For Single File Download via Browser**, and then click **Download Now**.
- 7 In the **Save As** window, select an appropriate location to download the file on your computer.
- 8 If the **Download Complete** window appears, click **Close**.

- 9** Navigate to the folder where you downloaded the BIOS update file.
The file icon appears in the folder and is titled the same as the downloaded BIOS update file.
- 10** Double-click the BIOS update file icon and follow the instructions that appear on the screen.