

Dell OptiPlex 3060 Tower

Service Manual



Notes, cautions, and warnings

 | **NOTE:** A NOTE indicates important information that helps you make better use of your product.

 | **CAUTION:** A CAUTION indicates either potential damage to hardware or loss of data and tells you how to avoid the problem.

 | **WARNING:** A WARNING indicates a potential for property damage, personal injury, or death.

© 2018 Dell Inc. or its subsidiaries. All rights reserved. Dell, EMC, and other trademarks are trademarks of Dell Inc. or its subsidiaries. Other trademarks may be trademarks of their respective owners.

1 Working on your computer.....	6
Safety instructions.....	6
Turning off your computer — Windows 10.....	6
Before working inside your computer.....	6
After working inside your computer.....	7
2 Technology and components.....	8
Processors.....	8
DDR4.....	8
DDR4 Details.....	8
Memory Errors.....	9
USB features.....	9
USB 3.0/USB 3.1 Gen 1 (SuperSpeed USB).....	10
Speed.....	10
Applications.....	11
Compatibility.....	11
HDMI 2.0.....	12
HDMI 2.0 Features.....	12
Advantages of HDMI.....	12
3 Removing and installing components.....	13
Recommended tools.....	13
Screw size list.....	13
Tower motherboard layout.....	14
Side cover.....	15
Removing side cover.....	15
Installing side cover.....	15
Front Bezel.....	16
Removing front bezel.....	16
Installing front bezel.....	17
Front panel door.....	18
Opening front panel door.....	18
Closing front panel door.....	19
Hard drive assembly—3.5-inch and 2.5-inch.....	20
Removing 3.5-inch hard drive	20
Installing 3.5-inch hard drive	22
Removing the 2.5-inch hard drive assembly.....	24
Removing the 2.5-inch drive from the drive bracket.....	25
Installing the 2.5-inch hard drive into the hard drive bracket.....	26
Installing the 2.5-inch drive assembly.....	26
Optical drive.....	27
Removing optical drive.....	27
Installing optical drive.....	28

M.2 PCIe SSD	29
Removing M.2 SSD	29
Installing M.2 SSD.....	30
SD card reader.....	31
Removing SD card reader.....	31
Installing SD card reader.....	32
Memory module.....	33
Removing memory module.....	33
Installing memory module.....	34
Expansion card.....	35
Removing PCIe expansion card.....	35
Installing PCIe expansion card.....	36
Optional VGA module.....	37
Removing optional VGA module.....	37
Installing optional VGA module.....	38
Power supply unit.....	39
Removing power supply unit or PSU.....	39
Installing power supply unit or PSU.....	41
Intrusion switch.....	43
Removing intrusion switch.....	43
Installing intrusion switch.....	44
Power button.....	45
Removing power button.....	45
Installing power button.....	47
Speaker.....	49
Removing speaker.....	49
Installing speaker.....	50
Coin cell battery.....	51
Removing coin cell battery.....	51
Installing the coin cell battery.....	52
Heat sink fan.....	53
Removing heat sink fan.....	53
Installing heat sink fan.....	54
Heat sink	55
Removing heat sink.....	55
Installing heat sink.....	56
Processor.....	57
Removing processor.....	57
Installing processor.....	58
System fan.....	59
Removing system fan.....	59
Installing system fan.....	61
System board.....	63
Removing system board.....	63
Installing the system board.....	66

4 Troubleshooting..... 70

Enhanced Pre-Boot System Assessment — ePSA diagnostics.....	70
Running the ePSA Diagnostics.....	70
Diagnostics.....	70
Diagnostic error messages.....	72
System error messages.....	75
5 Getting help.....	77
Contacting Dell.....	77

Working on your computer

Safety instructions

Use the following safety guidelines to protect your computer from potential damage and to ensure your personal safety. Unless otherwise noted, each procedure included in this document assumes that the following conditions exist:

- You have read the safety information that shipped with your computer.
- A component can be replaced or, if purchased separately, installed by performing the removal procedure in reverse order.

⚠ WARNING: Disconnect all power sources before opening the computer cover or panels. After you finish working inside the computer, replace all covers, panels, and screws before connecting to the power source.

⚠ WARNING: Before working inside your computer, read the safety information that shipped with your computer. For additional safety best practices information, see the Regulatory Compliance Homepage at www.Dell.com/regulatory_compliance

⚠ CAUTION: Many repairs may only be done by a certified service technician. You should only perform troubleshooting and simple repairs as authorized in your product documentation, or as directed by the online or telephone service and support team. Damage due to servicing that is not authorized by Dell is not covered by your warranty. Read and follow the safety instructions that came with the product.

⚠ CAUTION: To avoid electrostatic discharge, ground yourself by using a wrist grounding strap or by periodically touching an unpainted metal surface at the same time as touching a connector on the back of the computer.

⚠ CAUTION: Handle components and cards with care. Do not touch the components or contacts on a card. Hold a card by its edges or by its metal mounting bracket. Hold a component such as a processor by its edges, not by its pins.

⚠ CAUTION: When you disconnect a cable, pull on its connector or on its pull-tab, not on the cable itself. Some cables have connectors with locking tabs; if you are disconnecting this type of cable, press in on the locking tabs before you disconnect the cable. As you pull connectors apart, keep them evenly aligned to avoid bending any connector pins. Also, before you connect a cable, ensure that both connectors are correctly oriented and aligned.

ⓘ NOTE: The color of your computer and certain components may appear differently than shown in this document.

Turning off your computer — Windows 10

⚠ CAUTION: To avoid losing data, save and close all open files and exit all open programs before you turn off your computer or remove the side cover.

- 1 Click or tap .
- 2 Click or tap  and then click or tap **Shut down**.

ⓘ NOTE: Ensure that the computer and all attached devices are turned off. If your computer and attached devices did not automatically turn off when you shut down your operating system, press and hold the power button for about 6 seconds to turn them off.

Before working inside your computer

To avoid damaging your computer, perform the following steps before you begin working inside the computer.

- 1 Ensure that you follow the [Safety Instruction](#).
- 2 Ensure that your work surface is flat and clean to prevent the computer cover from being scratched.

- 3 Turn off your computer.
- 4 Disconnect all network cables from the computer.

⚠ CAUTION: To disconnect a network cable, first unplug the cable from your computer and then unplug the cable from the network device.

- 5 Disconnect your computer and all attached devices from their electrical outlets.
- 6 Press and hold the power button while the computer is unplugged to ground the system board.

ⓘ NOTE: To avoid electrostatic discharge, ground yourself by using a wrist grounding strap or by periodically touching an unpainted metal surface at the same time as touching a connector on the back of the computer.

After working inside your computer

After you complete any replacement procedure, ensure that you connect any external devices, cards, and cables before turning on your computer.

- 1 Connect any telephone or network cables to your computer.

⚠ CAUTION: To connect a network cable, first plug the cable into the network device and then plug it into the computer.

- 2 Connect your computer and all attached devices to their electrical outlets.
- 3 Turn on your computer.
- 4 If required, verify that the computer works correctly by running **ePSA diagnostics**.

Technology and components

This chapter details the technology and components available in the system.

Topics:

- [Processors](#)
- [DDR4](#)
- [USB features](#)
- [HDMI 2.0](#)

Processors

OptiPlex 5060 systems are shipped with Intel 8th generation-Coffee Lake chipset and core processor technology.

NOTE: The clock speed and performance varies depending on the workload and other variables. Total cache up to 8 MB cache depending on processor type.

- Intel Pentium Gold G5400 (2 Cores/4MB/4T/3.1GHz/35W); supports Windows 10/Linux
- Intel Pentium Gold G5500 (2 Cores/4MB/4T/3.2GHz/35W); supports Windows 10/Linux
- Intel Core i3-8100 (4 Cores/6MB/4T/3.1GHz/35W); supports Windows 10/Linux
- Intel Core i3-8300 (4 Cores/8MB/4T/3.2GHz/35W); supports Windows 10/Linux
- Intel Core i5-8400 (6 Cores/9MB/6T/up to 3.3GHz/35W); supports Windows 10/Linux
- Intel Core i5-8500 (6 Cores/9MB/6T/up to 3.5GHz/35W); supports Windows 10/Linux
- Intel Core i5-8600 (6 Cores/9MB/6T/up to 3.7GHz/35W); supports Windows 10/Linux
- Intel Core i7-8700 (6 Cores/12MB/12T/up to 4.0GHz/35W); supports Windows 10/Linux

DDR4

DDR4 (double data rate fourth generation) memory is a higher-speed successor to the DDR2 and DDR3 technologies and allows up to 512 GB in capacity, compared to the DDR3's maximum of 128 GB per DIMM. DDR4 synchronous dynamic random-access memory is keyed differently from both SDRAM and DDR to prevent the user from installing the wrong type of memory into the system.

DDR4 needs 20 percent less or just 1.2 volts, compared to DDR3 which requires 1.5 volts of electrical power to operate. DDR4 also supports a new, deep power-down mode that allows the host device to go into standby without needing to refresh its memory. Deep power-down mode is expected to reduce standby power consumption by 40 to 50 percent.

DDR4 Details

There are subtle differences between DDR3 and DDR4 memory modules, as listed below.

Key notch difference

The key notch on a DDR4 module is in a different location from the key notch on a DDR3 module. Both notches are on the insertion edge but the notch location on the DDR4 is slightly different, to prevent the module from being installed into an incompatible board or platform.

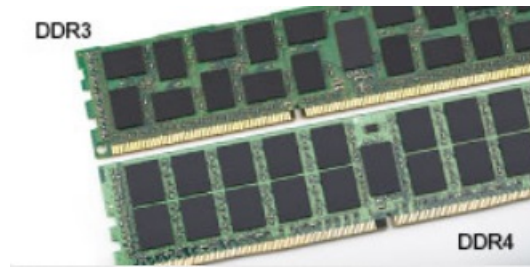


Figure 1. Notch difference

Increased thickness

DDR4 modules are slightly thicker than DDR3, to accommodate more signal layers.

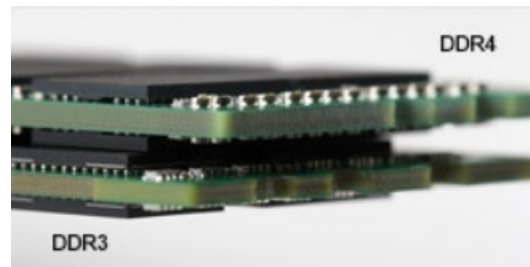


Figure 2. Thickness difference

Curved edge

DDR4 modules feature a curved edge to help with insertion and alleviate stress on the PCB during memory installation.



Figure 3. Curved edge

Memory Errors

Memory errors on the system display the new ON-FLASH-FLASH or ON-FLASH-ON failure code. If all memory fails, the LCD does not turn on. Troubleshoot for possible memory failure by trying known good memory modules in the memory connectors on the bottom of the system or under the keyboard, as in some portable systems.

USB features

Universal Serial Bus, or USB, was introduced in 1996. It dramatically simplified the connection between host computers and peripheral devices like mice, keyboards, external drives, and printers.

Let's take a quick look on the USB evolution referencing to the table below.

Table 1. USB evolution

Type	Data Transfer Rate	Category	Introduction Year
USB 3.0/USB 3.1 Gen 1	5 Gbps	Super Speed	2010
USB 2.0	480 Mbps	High Speed	2000
USB 3.1 Gen 2	10 Gbps	Super Speed	2013

USB 3.0/USB 3.1 Gen 1 (SuperSpeed USB)

For years, the USB 2.0 has been firmly entrenched as the de facto interface standard in the PC world with about 6 billion devices sold, and yet the need for more speed grows by ever faster computing hardware and ever greater bandwidth demands. The USB 3.0/USB 3.1 Gen 1 finally has the answer to the consumers' demands with a theoretically 10 times faster than its predecessor. In a nutshell, USB 3.1 Gen 1 features are as follows:

- Higher transfer rates (up to 5 Gbps)
- Increased maximum bus power and increased device current draw to better accommodate power-hungry devices
- New power management features
- Full-duplex data transfers and support for new transfer types
- Backward USB 2.0 compatibility
- New connectors and cable

The topics below cover some of the most commonly asked questions regarding USB 3.0/USB 3.1 Gen 1.

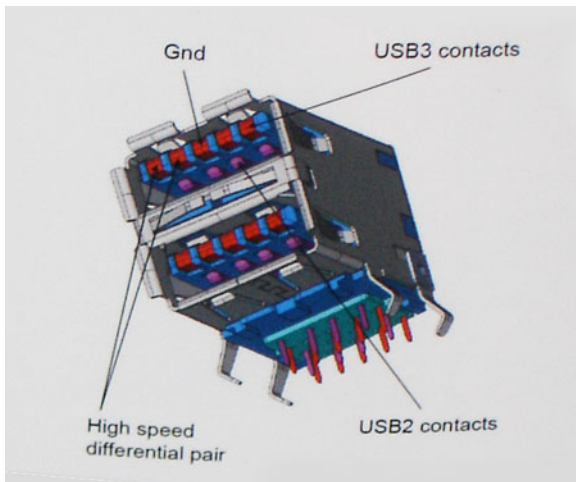


Speed

Currently, there are 3 speed modes defined by the latest USB 3.0/USB 3.1 Gen 1 specification. They are Super-Speed, Hi-Speed and Full-Speed. The new SuperSpeed mode has a transfer rate of 4.8Gbps. While the specification retains Hi-Speed, and Full-Speed USB mode, commonly known as USB 2.0 and 1.1 respectively, the slower modes still operate at 480Mbps and 12Mbps respectively and are kept to maintain backward compatibility.

USB 3.0/USB 3.1 Gen 1 achieves the much higher performance by the technical changes below:

- An additional physical bus that is added in parallel with the existing USB 2.0 bus (refer to the picture below).
- USB 2.0 previously had four wires (power, ground, and a pair for differential data); USB 3.0/USB 3.1 Gen 1 adds four more for two pairs of differential signals (receive and transmit) for a combined total of eight connections in the connectors and cabling.
- USB 3.0/USB 3.1 Gen 1 utilizes the bidirectional data interface, rather than USB 2.0's half-duplex arrangement. This gives a 10-fold increase in theoretical bandwidth.



With today's ever increasing demands placed on data transfers with high-definition video content, terabyte storage devices, high megapixel count digital cameras etc., USB 2.0 may not be fast enough. Furthermore, no USB 2.0 connection could ever come close to the 480Mbps theoretical maximum throughput, making data transfer at around 320Mbps (40MB/s) — the actual real-world maximum. Similarly, USB 3.0/USB 3.1 Gen 1 connections will never achieve 4.8Gbps. We will likely see a real-world maximum rate of 400MB/s with overheads. At this speed, USB 3.0/USB 3.1 Gen 1 is a 10x improvement over USB 2.0.

Applications

USB 3.0/USB 3.1 Gen 1 opens up the laneways and provides more headroom for devices to deliver a better overall experience. Where USB video was barely tolerable previously (both from a maximum resolution, latency, and video compression perspective), it's easy to imagine that with 5-10 times the bandwidth available, USB video solutions should work that much better. Single-link DVI requires almost 2Gbps throughput. Where 480Mbps was limiting, 5Gbps is more than promising. With its promised 4.8Gbps speed, the standard will find its way into some products that previously weren't USB territory, like external RAID storage systems.

Listed below are some of the available SuperSpeed USB 3.0/USB 3.1 Gen 1 products:

- External Desktop USB 3.0/USB 3.1 Gen 1 Hard Drives
- Portable USB 3.0/USB 3.1 Gen 1 Hard Drives
- USB 3.0/USB 3.1 Gen 1 Drive Docks & Adapters
- USB 3.0/USB 3.1 Gen 1 Flash Drives & Readers
- USB 3.0/USB 3.1 Gen 1 Solid-state Drives
- USB 3.0/USB 3.1 Gen 1 RAIDs
- Optical Media Drives
- Multimedia Devices
- Networking
- USB 3.0/USB 3.1 Gen 1 Adapter Cards & Hubs

Compatibility

The good news is that USB 3.0/USB 3.1 Gen 1 has been carefully planned from the start to peacefully co-exist with USB 2.0. First of all, while USB 3.0/USB 3.1 Gen 1 specifies new physical connections and thus new cables to take advantage of the higher speed capability of the new protocol, the connector itself remains the same rectangular shape with the four USB 2.0 contacts in the exact same location as before. Five new connections to carry receive and transmitted data independently are present on USB 3.0/USB 3.1 Gen 1 cables and only come into contact when connected to a proper SuperSpeed USB connection.

Windows 8/10 will be bringing native support for USB 3.1 Gen 1 controllers. This is in contrast to previous versions of Windows, which continue to require separate drivers for USB 3.0/USB 3.1 Gen 1 controllers.

Microsoft announced that Windows 7 would have USB 3.1 Gen 1 support, perhaps not on its immediate release, but in a subsequent Service Pack or update. It is not out of the question to think that following a successful release of USB 3.0/USB 3.1 Gen 1 support in Windows 7, SuperSpeed support would trickle down to Vista. Microsoft has confirmed this by stating that most of their partners share the opinion that Vista should also support USB 3.0/USB 3.1 Gen 1.

HDMI 2.0

This topic explains the HDMI 2.0 and its features along with the advantages.

HDMI (High-Definition Multimedia Interface) is an industry-supported, uncompressed, all-digital audio/video interface. HDMI provides an interface between any compatible digital audio/video source, such as a DVD player, or A/V receiver and a compatible digital audio and/or video monitor, such as a digital TV (DTV). The intended applications for HDMI TVs, and DVD players. The primary advantage is cable reduction and content protection provisions. HDMI supports standard, enhanced, or high-definition video, plus multichannel digital audio on a single cable.

HDMI 2.0 Features

- **HDMI Ethernet Channel** - Adds high-speed networking to an HDMI link, allowing users to take full advantage of their IP-enabled devices without a separate Ethernet cable
- **Audio Return Channel** - Allows an HDMI-connected TV with a built-in tuner to send audio data "upstream" to a surround audio system, eliminating the need for a separate audio cable
- **3D** - Defines input/output protocols for major 3D video formats, paving the way for true 3D gaming and 3D home theater applications
- **Content Type** - Real-time signaling of content types between display and source devices, enabling a TV to optimize picture settings based on content type
- **Additional Color Spaces** - Adds support for additional color models used in digital photography and computer graphics
- **4K Support** - Enables video resolutions far beyond 1080p, supporting next-generation displays that will rival the Digital Cinema systems used in many commercial movie theaters
- **HDMI Micro Connector** - A new, smaller connector for phones and other portable devices, supporting video resolutions up to 1080p
- **Automotive Connection System** - New cables and connectors for automotive video systems, designed to meet the unique demands of the motoring environment while delivering true HD quality

Advantages of HDMI

- Quality HDMI transfers uncompressed digital audio and video for the highest, crispest image quality.
- Low -cost HDMI provides the quality and functionality of a digital interface while also supporting uncompressed video formats in a simple, cost-effective manner
- Audio HDMI supports multiple audio formats from standard stereo to multichannel surround sound
- HDMI combines video and multichannel audio into a single cable, eliminating the cost, complexity, and confusion of multiple cables currently used in A/V systems
- HDMI supports communication between the video source (such as a DVD player) and the DTV, enabling new functionality

Removing and installing components







Recommended tools

The procedures in this document require the following tools:

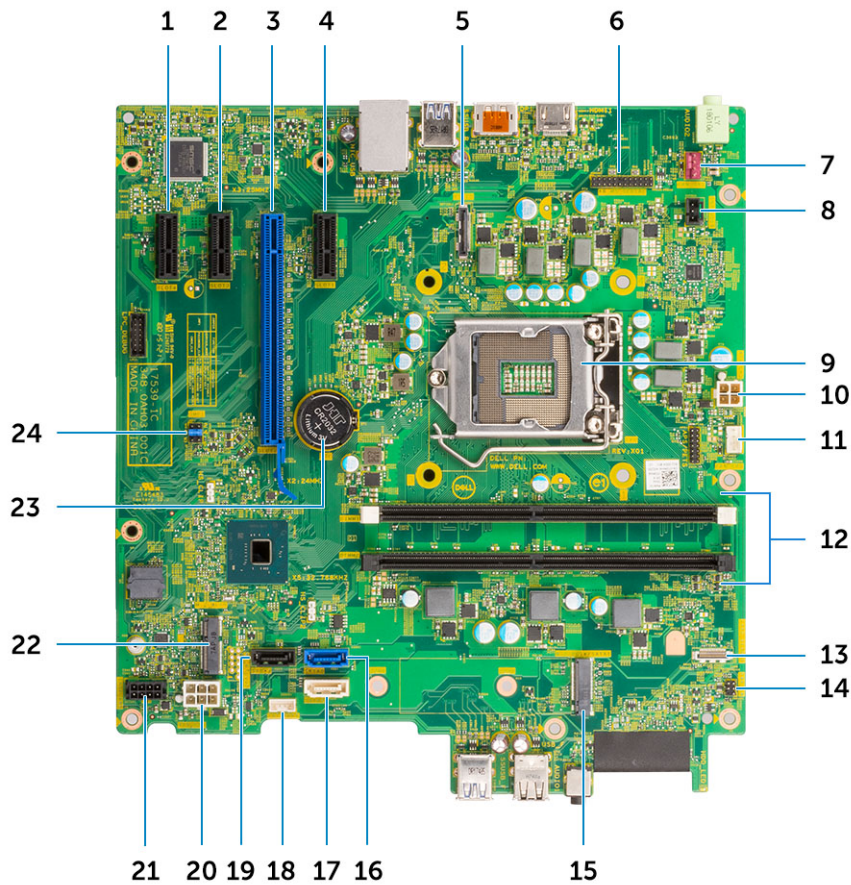
- Small flat blade screwdriver
- Phillips # 1 screwdriver
- Small plastic scribe

Screw size list

Table 2. OptiPlex 3060 MT

Component	Secured to	Screw type	Quantity	Image
Side cover	System chassis	#6.32X8.0	2	
System board	System chassis	#6.32X1.4	9	
PSU	System chassis		3	
WLAN	System board	M2.3.5	1	
M.2 SSD	System board		1	
SD card module	System chassis	#6.32x3.6	1	
3.5 inch HDD	System chassis		4	
5.25 inch ODD Module	System	M3X5	3	
Type-C with DP/HDMI/DP Cable Module	System	M3X3	2	
Internal Antenna	System		2	

Tower motherboard layout



Tower system board components

- | | | | |
|----|--|----|--|
| 1 | PCI-eX1 Connector (Slot4) | 2 | PCI-eX1 Connector (Slot3) |
| 3 | PCI-eX16 Connector (Slot2) | 4 | PCI-eX1 Connector (Slot1) |
| 5 | Video port header | 6 | PS2 KB/MS/Serial Port Header (KB_MS_SERIAL) |
| 7 | System Fan Connector (FAN_SYS) | 8 | Intrusion Switch Connector (INTRUDER) |
| 9 | Processor Socket | 10 | CPU Power Connector (ATX_CPU) |
| 11 | CPU Fan Connector (FAN_CPU) | 12 | Memory Connector (DIMM1~ DIMM2) |
| 13 | Card Reader Connector (Card Reader) | 14 | Power Switch Connector (PWR_SW) |
| 15 | M.2 SSD connector | 16 | SATA 0 Connector (Blue color) |
| 17 | SATA 2 Connector (White color) | 18 | Internal Speaker Connector (INT_SPKR) |
| 19 | SATA 3 Connector (Black color) | 20 | ATX Power Connector (ATX_SYS) |
| 21 | HDD_ODD_Power Cable Connector (SATA PWR) | 22 | M.2 WLAN connector |
| 23 | Coin cell battery | 24 | CMOS_CLR/Password/Service_Mode Jumper (JMP1) |

Side cover

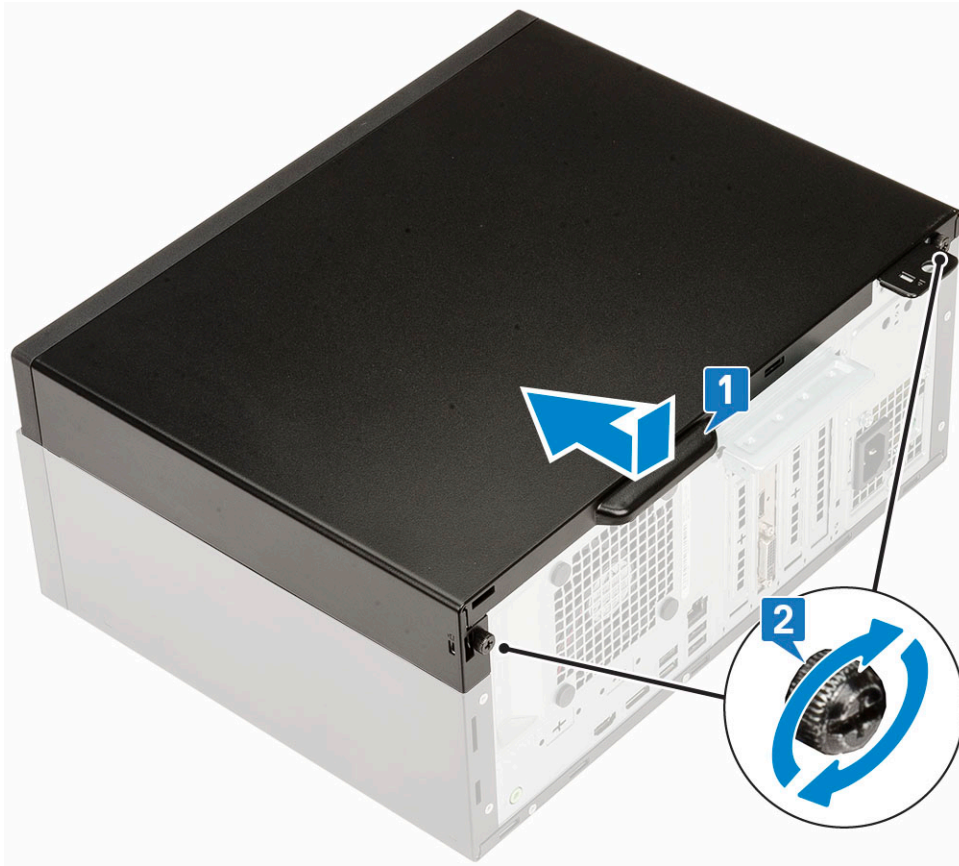
Removing side cover

- 1 Follow the procedure in [Before working inside your computer](#).
- 2 To remove the cover:
 - a Loosen the captive screws that secure the cover to the computer [1].
 - b Slide the cover towards the back of the system and lift it from the system [2].



Installing side cover

- 1 To install the side cover:
 - a Place the cover on the computer, slide it to align it with the chassis and tighten the captive screws to secure the cover to the computer [1, 2].



- 2 Follow the procedure in [After working inside your computer.](#)

Front Bezel

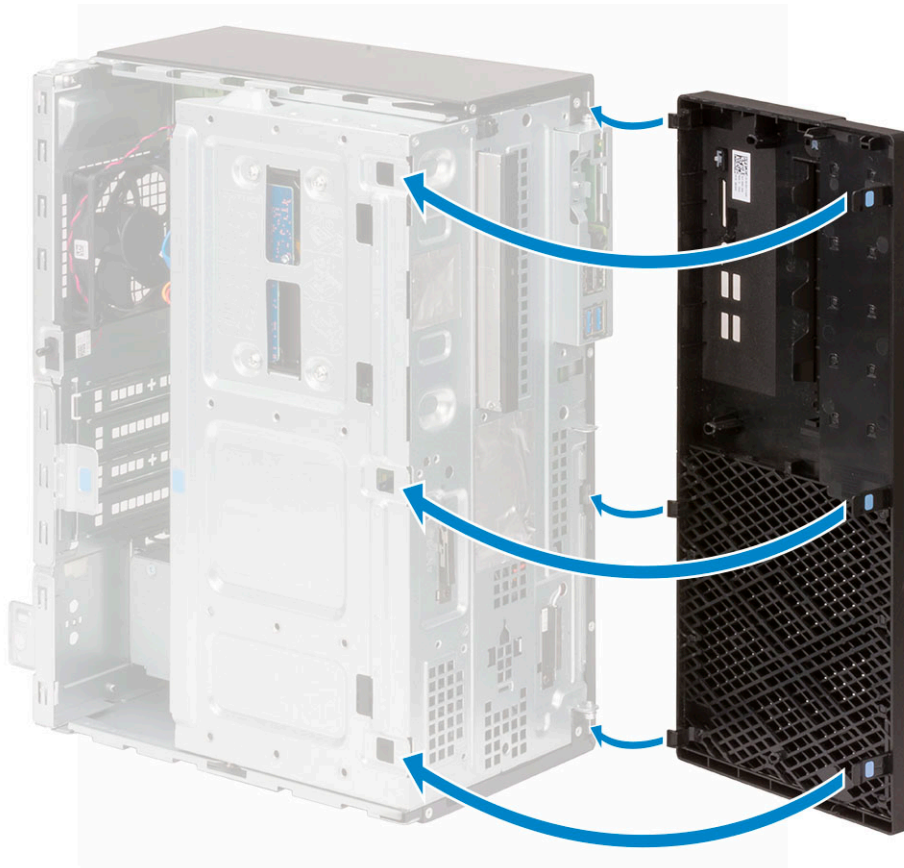
Removing front bezel

- 1 Follow the procedure in [Before working inside your computer.](#)
- 2 Remove the [Side cover.](#)
- 3 To remove the front bezel:
 - a Pry the retention tabs to release the front bezel from the system.
 - b Remove the front bezel from the system.



Installing front bezel

- 1 To install the front bezel:
 - a Position the bezel to align the tab holders with the slots on the system chassis.
 - b Press the bezel until the tabs click into place.



- 2 Install the [Side cover](#).
- 3 Follow the procedure in [After working inside your computer](#).

Front panel door

Opening front panel door

- 1 Follow the procedure in [Before working inside your computer](#).
- 2 Remove the:
 - a [Side cover](#)
 - b [Front bezel](#)

 **CAUTION:** The front panel door opens only to a limited extent. See the printed image on the front panel door for the maximum permissible level.

- 3 Pull the front panel door to open it.



Closing front panel door

- 1 Turn the front panel door to close it.

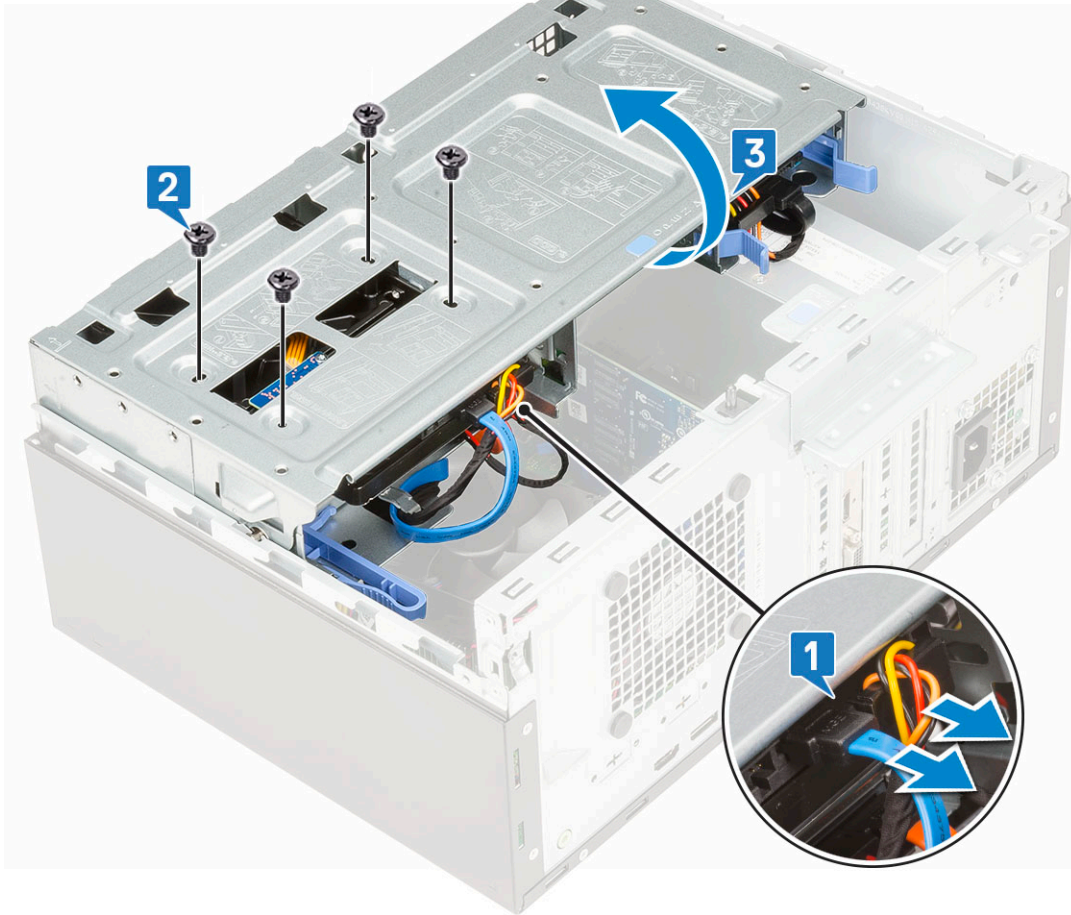


- 2 Install the:
 - a [Front bezel](#)
 - b [Side cover](#)
- 3 Follow the procedure in [After working inside your computer](#).

Hard drive assembly—3.5-inch and 2.5-inch

Removing 3.5-inch hard drive

- 1 Follow the procedure in [Before working inside your computer](#).
- 2 Remove the:
 - a [Side cover](#)
 - b [Front bezel](#)
- 3 To remove the hard drive:
 - a Disconnect the SATA cable and the power cable from the connectors on the hard drive [1]
 - b Remove the four screws and lift the bay [2, 3]



c Remove the 3.5 inch hard drive out of the system.

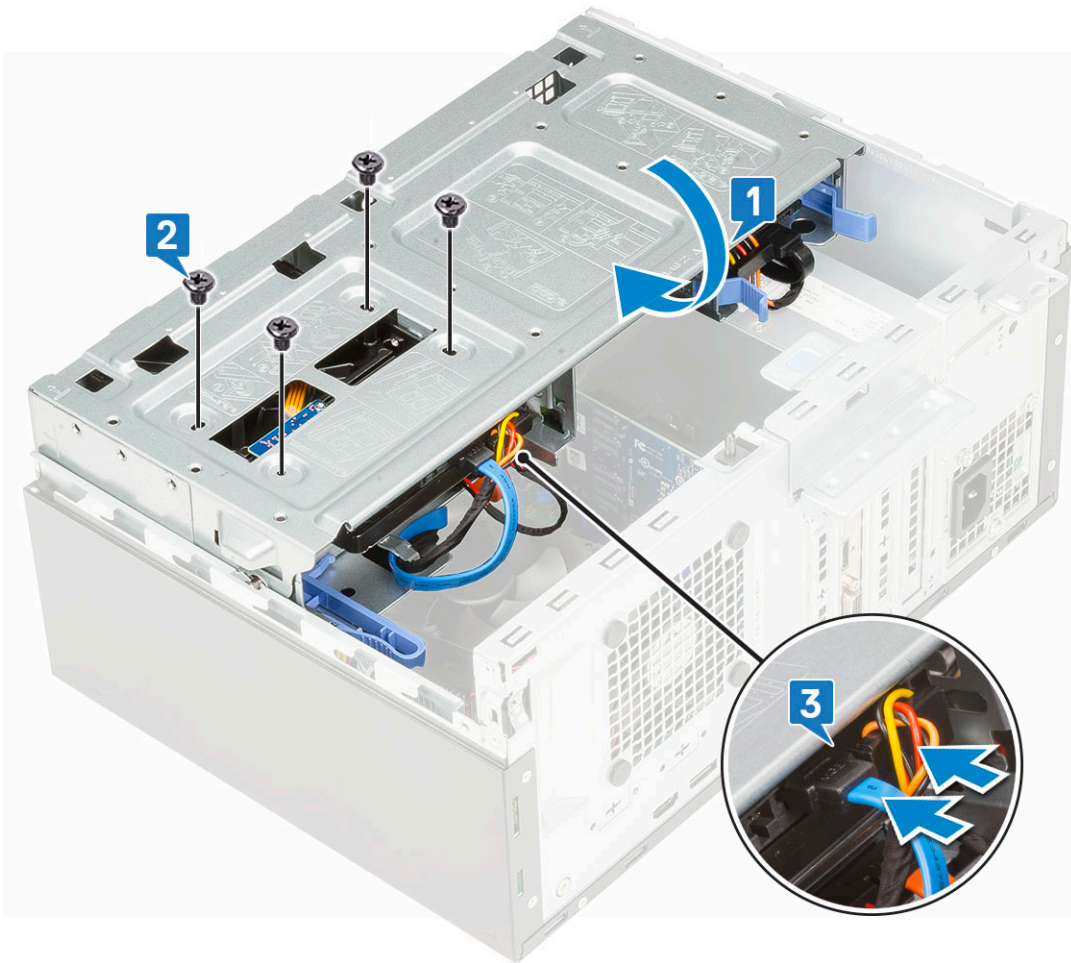


Installing 3.5-inch hard drive

- 1 Insert the 3.5 inch hard drive into the system.



- 2 Close the bay [1] and replace the four screws [2].
- 3 Connect the SATA cable and the power cable to the connectors on the hard drive [3].



- 4 Install the:
 - a [Front bezel](#)
 - b [Side cover](#)
- 5 Follow the procedure in [After working inside your computer](#).

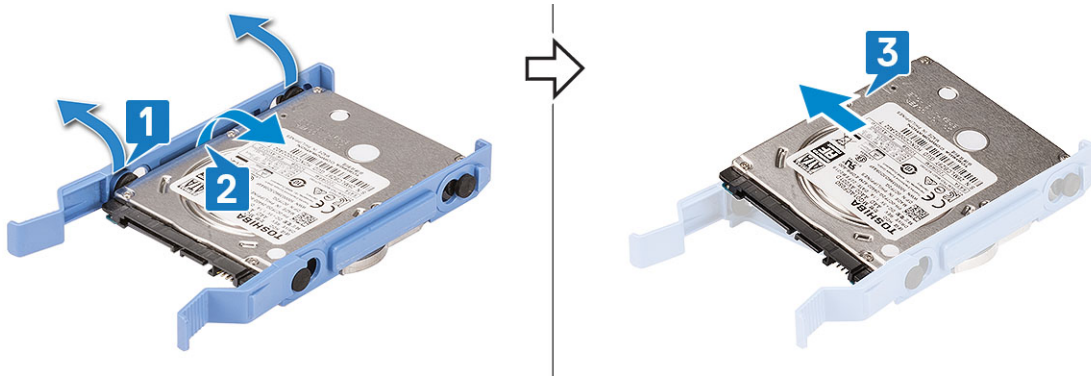
Removing the 2.5-inch hard drive assembly

- 1 Follow the procedure in [Before working inside your computer](#).
- 2 Remove the:
 - a [Side cover](#)
 - b [Front bezel](#)
- 3 Open the [front panel door](#).
- 4 To remove the hard drive assembly:
 - a Disconnect the hard drive data and power cables from the connectors on the 2.5-inch hard drive [1].
 - b Press the blue tabs of the assembly on both sides [2] and pull the hard drive assembly out of the system [3].



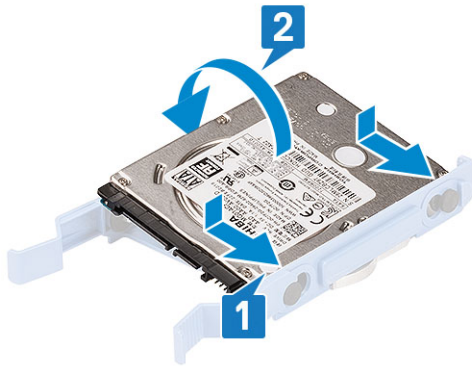
Removing the 2.5-inch drive from the drive bracket

- 1 Follow the procedure in [Before Working Inside Your Computer](#).
- 2 Remove the:
 - a [Side cover](#)
 - b [Front bezel](#)
 - c [2.5-inch hard drive assembly](#)
- 3 To remove the drive:
 - a Pull one side of the drive bracket to disengage the pins on the bracket from the slots on the drive [1].
 - b Lift the drive out of the drive bracket [2].



Installing the 2.5–inch hard drive into the hard drive bracket

- 1 To install the hard drive:
 - a Align the hard drive to the side of the hard drive bracket, and pull the other end tabs to insert the pins on the bracket into the hard drive.
 - b Insert the hard drive into the hard drive bracket until it clicks into place [1].
 - c Insert the hard drive into the hard drive bracket until it clicks into place [2].



- 2 Install the:
 - a [2.5-inch hard drive assembly](#)
 - b [Front bezel](#)
 - c [Side cover](#)
- 3 Follow the procedure in [After working inside your computer](#).

Installing the 2.5-inch drive assembly

- 1 To install the hard drive:
 - a Insert the hard drive assembly into the slot on the system until it clicks into place [1] [2].
 - b Connect the hard drive data and power cables to the connectors on the 2.5-inch hard drive [3].

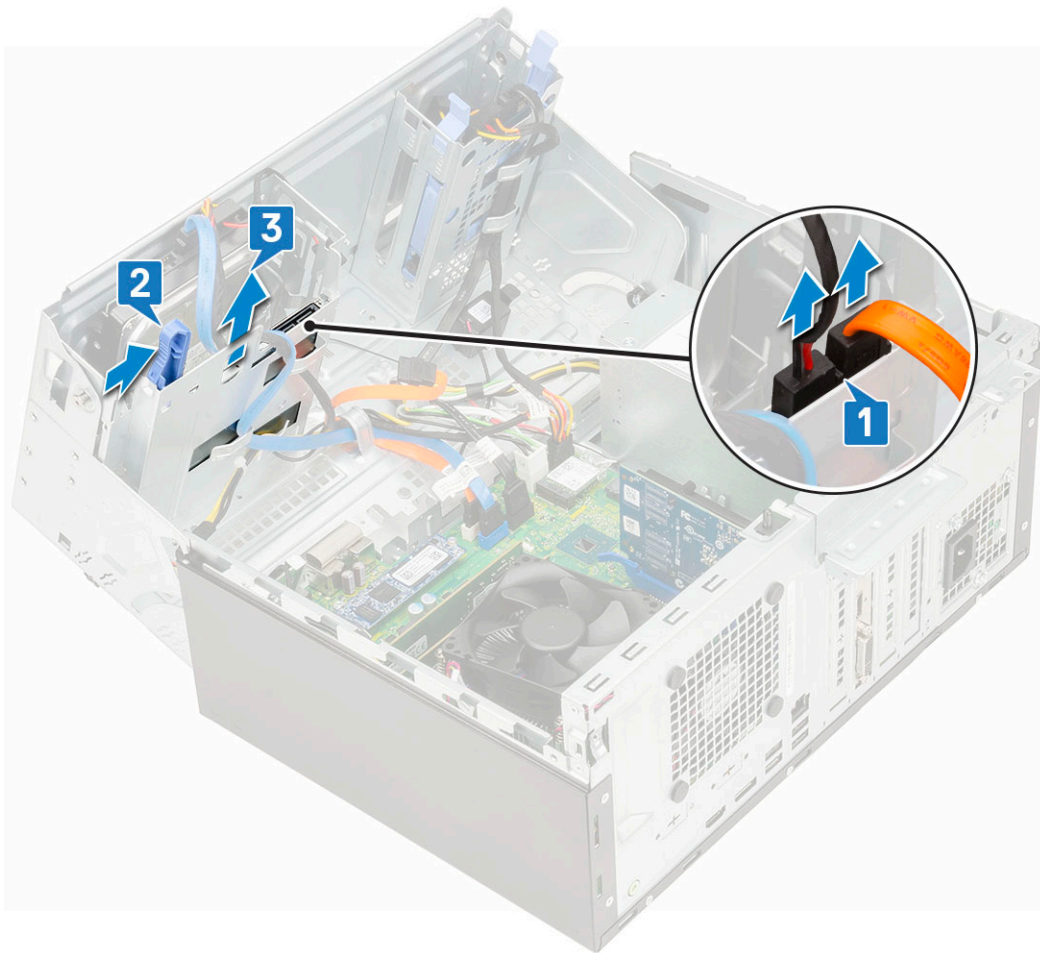


- 2 Close the [front panel door](#).
- 3 Install the:
 - a [Front bezel](#)
 - b [Side cover](#)
- 4 Follow the procedure in [After Working Inside Your Computer](#).

Optical drive

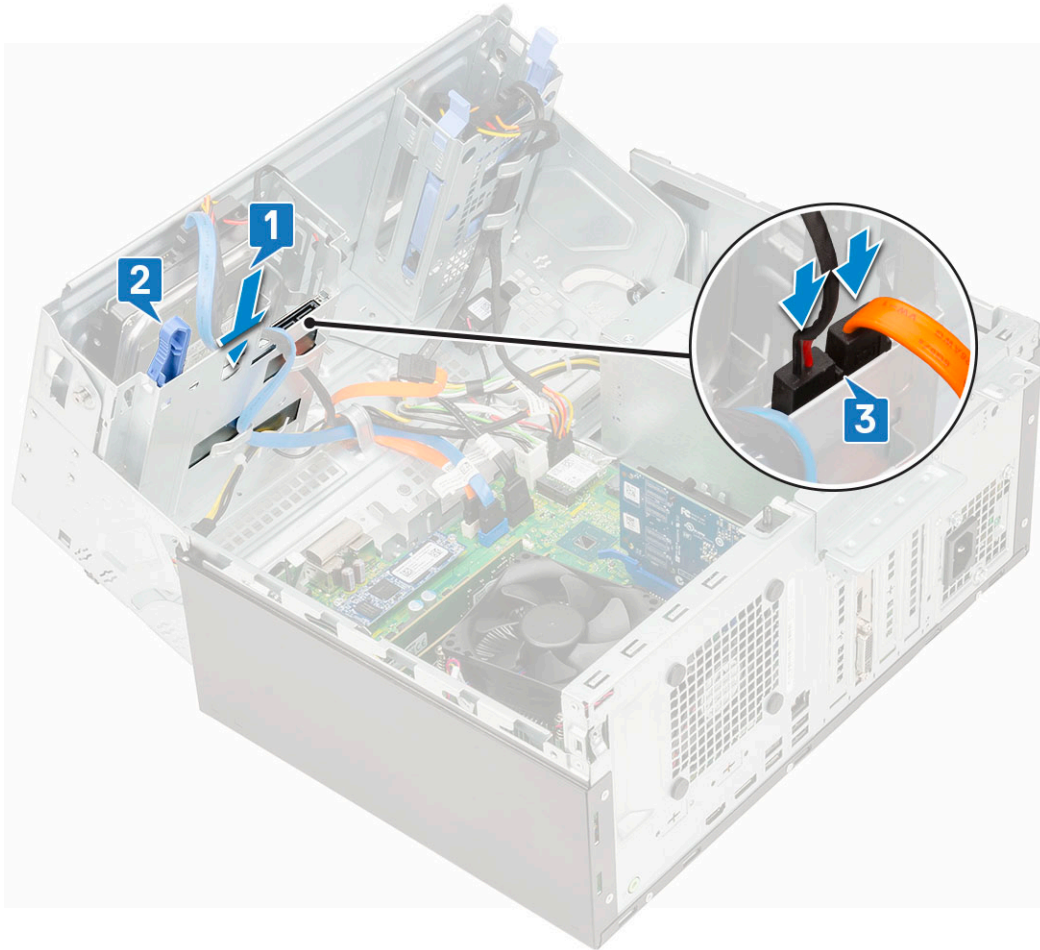
Removing optical drive

- 1 Follow the procedure in [Before working inside your computer](#).
- 2 Remove the:
 - a [Side cover](#)
 - b [Front bezel](#)
- 3 Open the [front panel door](#).
- 4 To remove the optical drive assembly:
 - a Disconnect the optical drive data cable and power cable from the connectors on the optical drive [1].
 - b Press the blue release tab [2] and slide the optical drive out of the system [3].



Installing optical drive

- 1 To install the optical drive:
 - a Close the [front panel door](#).
 - b Insert the optical drive into the optical drive bay until it clicks into place [1, 2].
 - c Route the cables under the drive cage.
 - d Connect the optical drive data cable and power cable to the connectors on the optical drive [3].

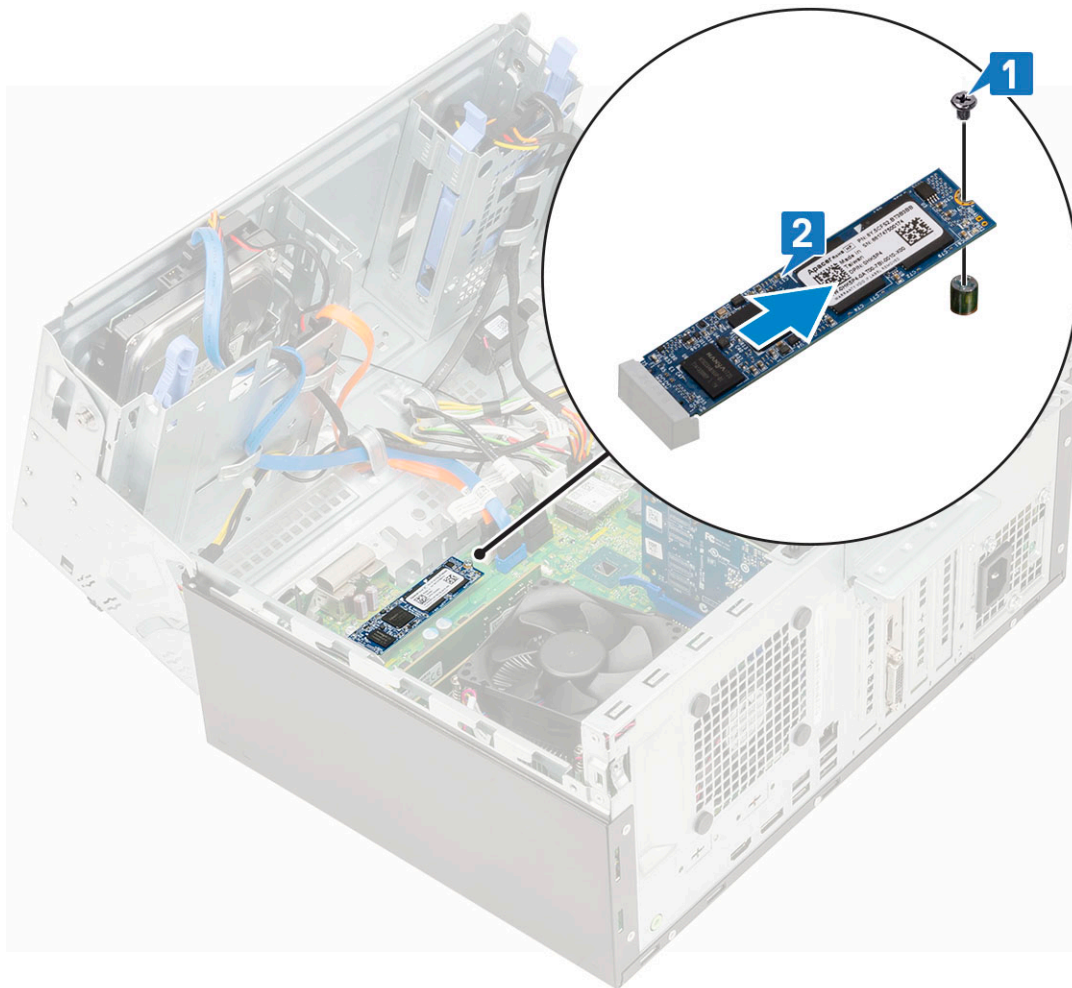


- 2 Install the:
 - a [Front bezel](#)
 - b [Side cover](#)
- 3 Follow the procedure in [After working inside your computer](#).

M.2 PCIe SSD

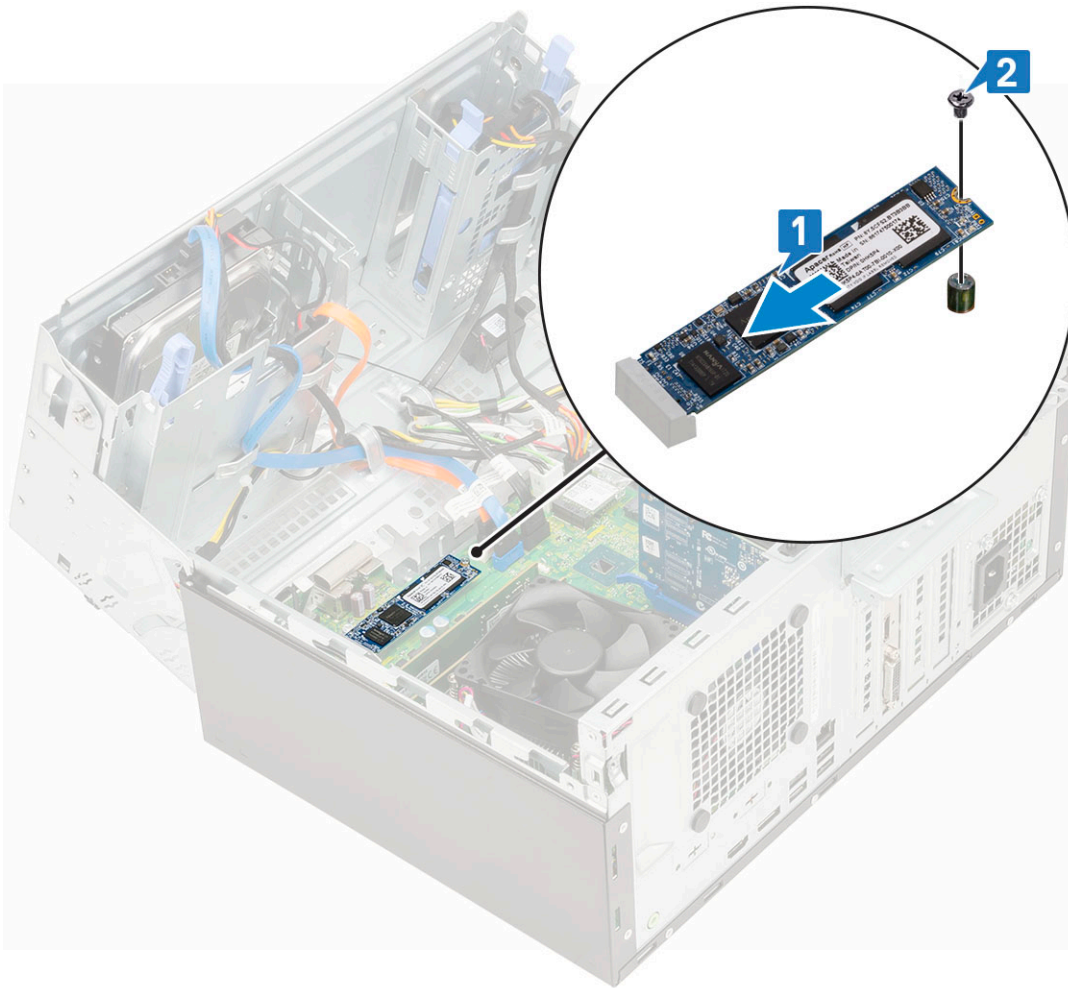
Removing M.2 SSD

- 1 Follow the procedure in [Before working inside your computer](#).
- 2 Remove the:
 - a [Side cover](#)
 - b [Front bezel](#)
- 3 Open the [front panel door](#).
- 4 To remove the M.2 SSD:
 - a Remove the single screw that secures the SSD to the system board [1].
 - b Slide the M.2 SSD from the connector on the system board [2].



Installing M.2 SSD

- 1 Insert the M.2 SSD to the connector on the system board [1].
- 2 Replace the single screw to secure the SSD to the system board [2].

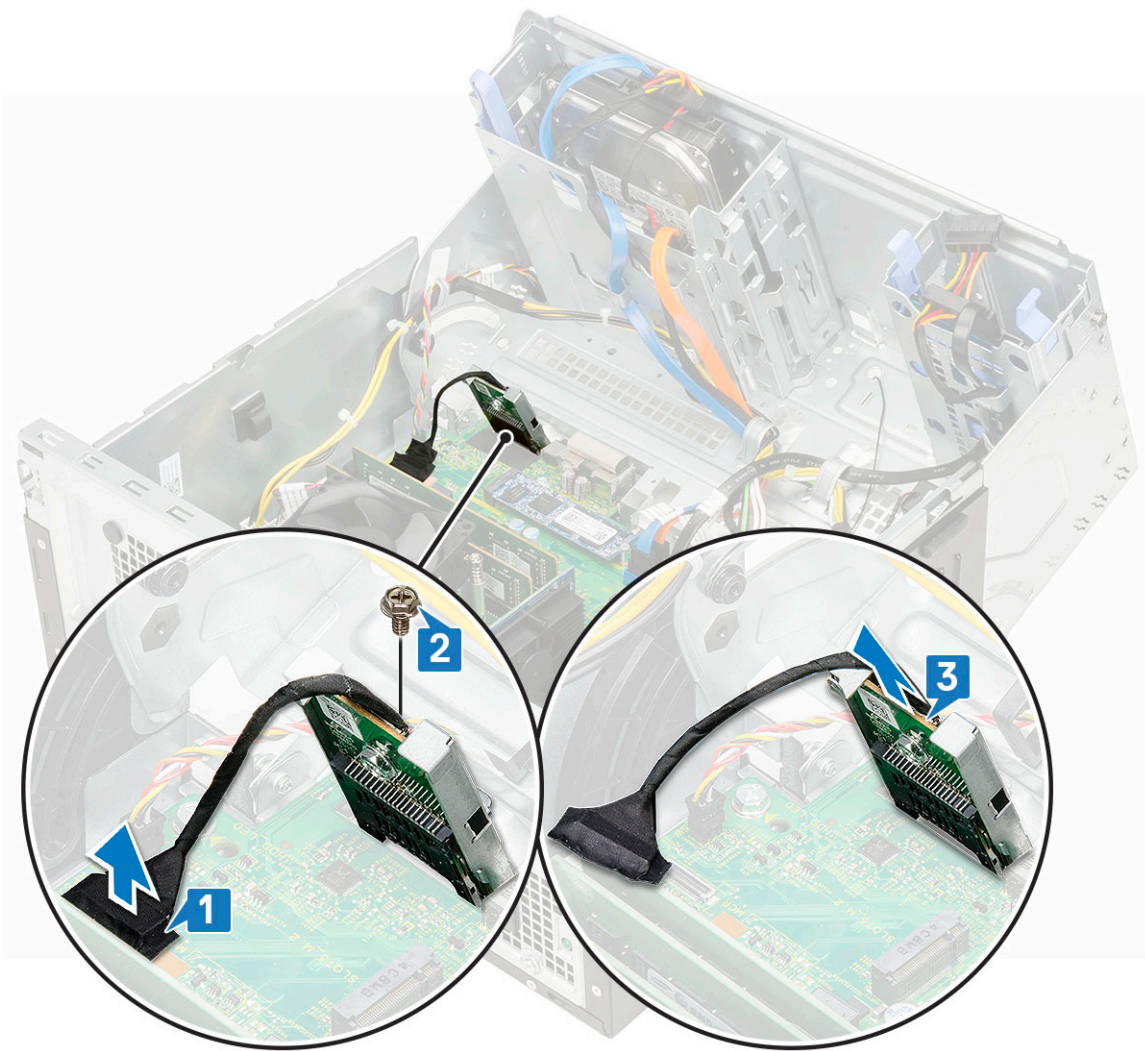


- 3 Close the [front panel door](#).
- 4 Install the:
 - a [Front bezel](#)
 - b [Side cover](#)
- 5 Follow the procedure in [After working inside your computer](#).

SD card reader

Removing SD card reader

- 1 Follow the procedure in [Before working inside your computer](#).
- 2 Remove the:
 - a [Side cover](#)
 - b [Front bezel](#)
- 3 Open the [front panel door](#).
- 4 To remove the SD card reader:
 - a Disconnect the SD card reader cable from the connector on the system board [1].
 - b Remove the screw that secures the SD card reader to the front panel door [2].
 - c Lift the SD card reader out of the system [3].



Installing SD card reader

- 1 To install the SD card reader:
 - a Insert the SD card reader into the slot on the front panel door [1].
 - b Replace the screw to secure the SD card reader to the front panel door [2].
 - c Connect the SD card reader cable to the connector on the system board [3].

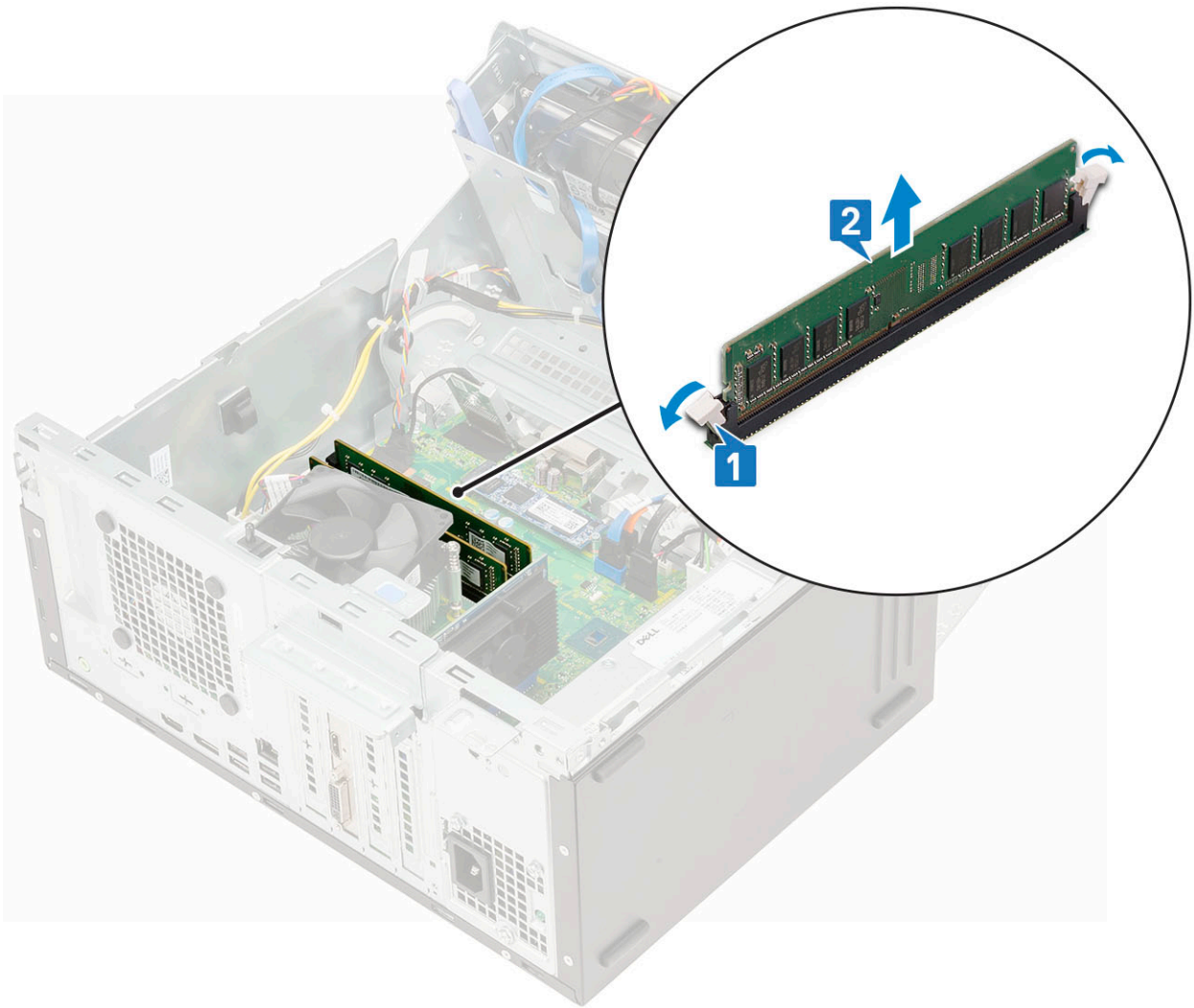


- 2 Close the [front panel door](#).
- 3 Install the:
 - a [Front bezel](#)
 - b [Side cover](#)
- 4 Follow the procedure in [After working inside your computer](#).

Memory module

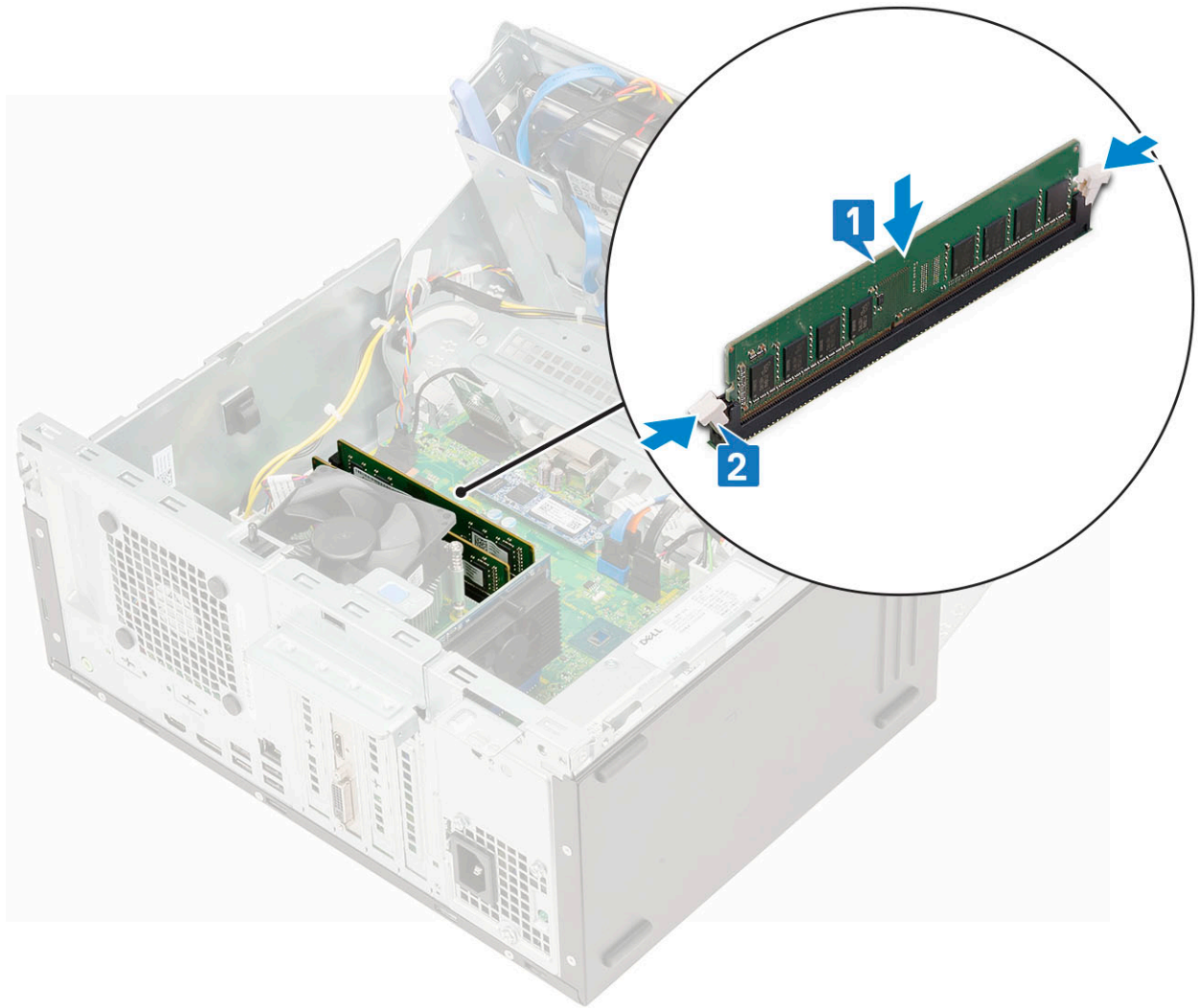
Removing memory module

- 1 Follow the procedure in [Before working inside your computer](#).
- 2 Remove the:
 - a [Side cover](#)
 - b [Front bezel](#)
- 3 Open the [front panel door](#).
- 4 To remove the memory module:
 - a Pull the clips securing the memory module until the memory module pops up [1].
 - b Remove the memory module from the system board [2].



Installing memory module

- 1 To install the memory module:
 - a Align the notch on the memory module with the tab on the memory module connector.
 - b Insert the memory module into the memory module socket [1].
 - c Press the memory module until the memory module retention tabs click into place [2].



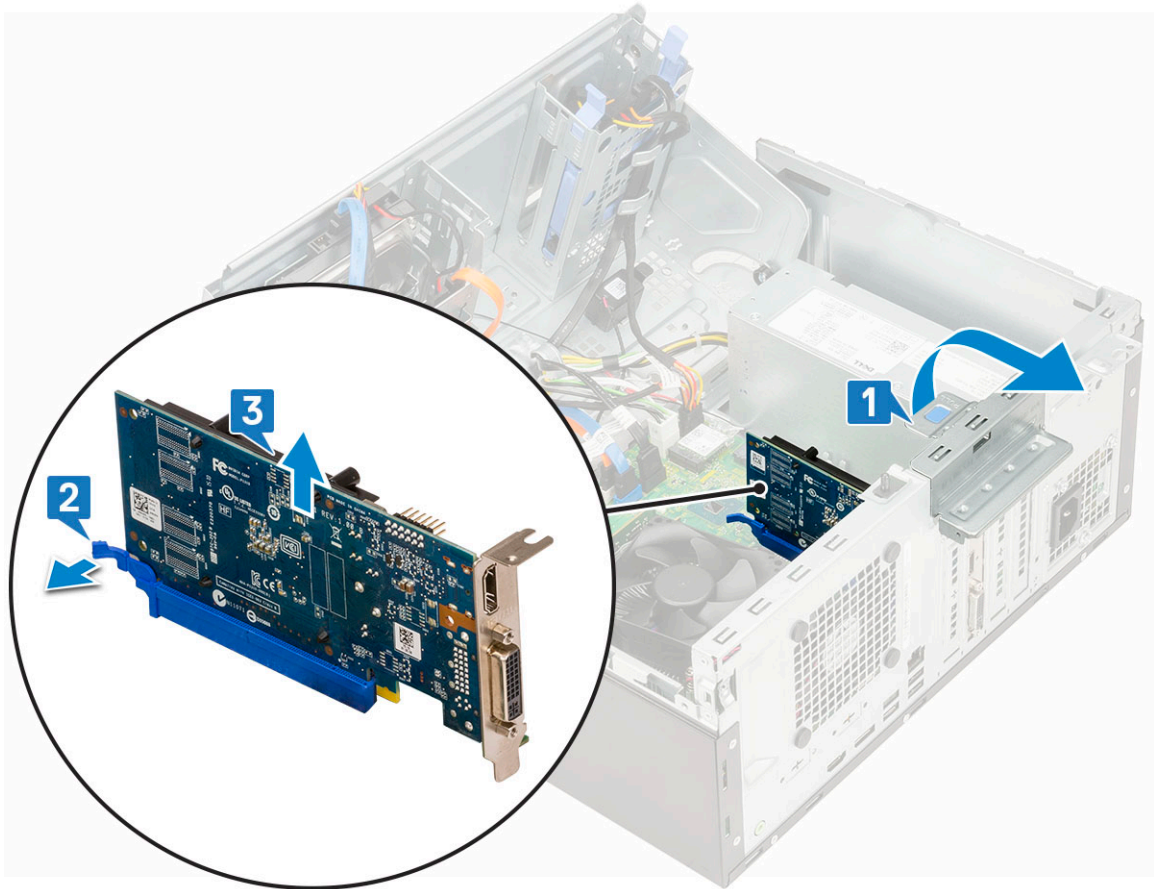
- 2 Close the [front panel door](#).
- 3 Install the:
 - a [Front bezel](#)
 - b [Side cover](#)
- 4 Follow the procedure in [After working inside your computer](#).

Expansion card

Removing PCIe expansion card

- 1 Follow the procedure in [Before working inside your computer](#).
- 2 Remove the:
 - a [Side cover](#)
 - b [Front bezel](#)
- 3 Open the [front panel door](#).
- 4 To remove the PCIe expansion card:
 - a Pull the release latch to unlock the PCIe expansion card [1].
 - b Push the card retention latch [2], and lift the PCIe expansion card out of the computer [3].

NOTE: This step is applicable only for the connector with card retention latch, otherwise, lift the PCIe expansion card out of the system.

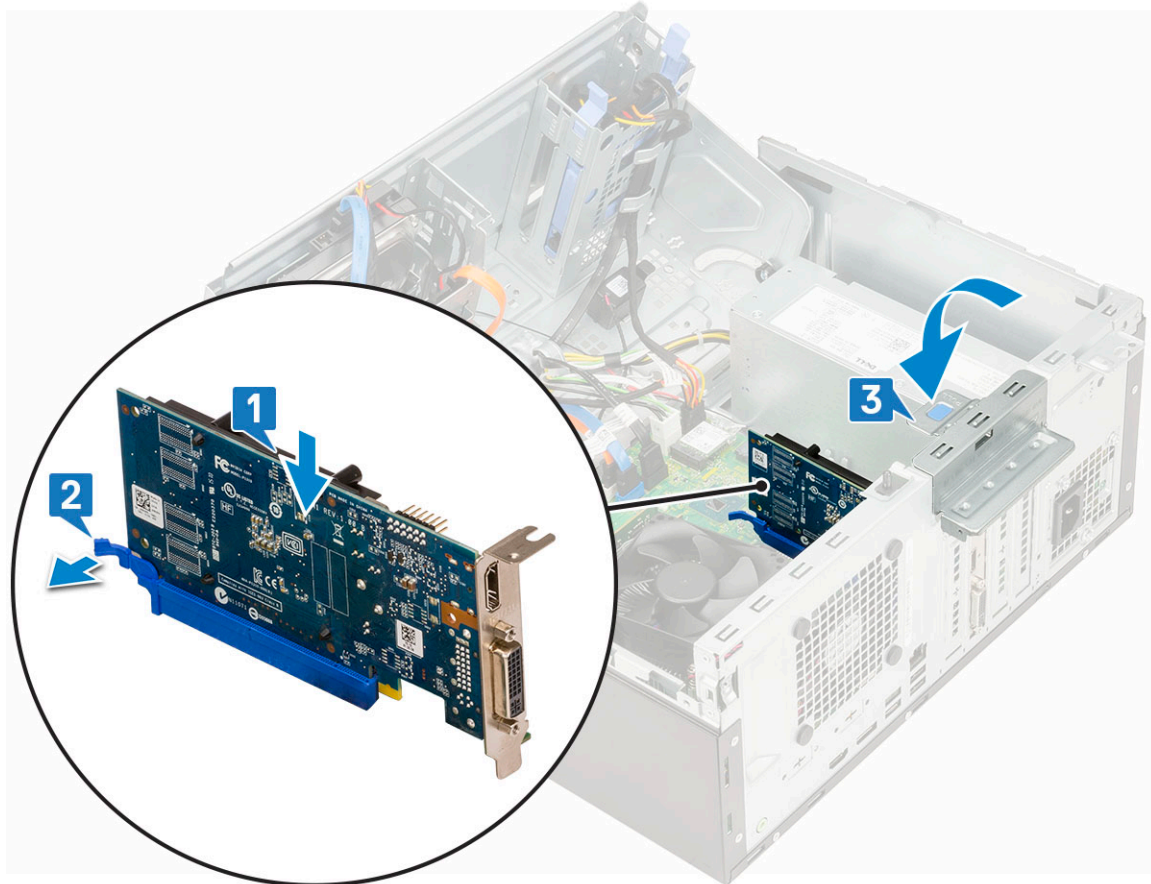


5 Repeat the steps to remove any additional PCIe expansion card.

Installing PCIe expansion card

- 1 To install the PCIe expansion card:
 - a Insert the PCIe expansion card to the connector on the system board [1].
 - b Pull the release latch backward to open [2].
 - c Secure the PCIe expansion card by pushing the card retention latch until it clicks into place [3].

NOTE: This step is applicable only for the connector with card retention latch, otherwise, skip this step.



- d Repeat the steps to install any additional PCIe expansion card.
- 2 Close the release latch.
- 3 Close the [front panel door](#).
- 4 Install the:
 - a [Front bezel](#)
 - b [Side cover](#)
- 5 Follow the procedure in [After working inside your computer](#).

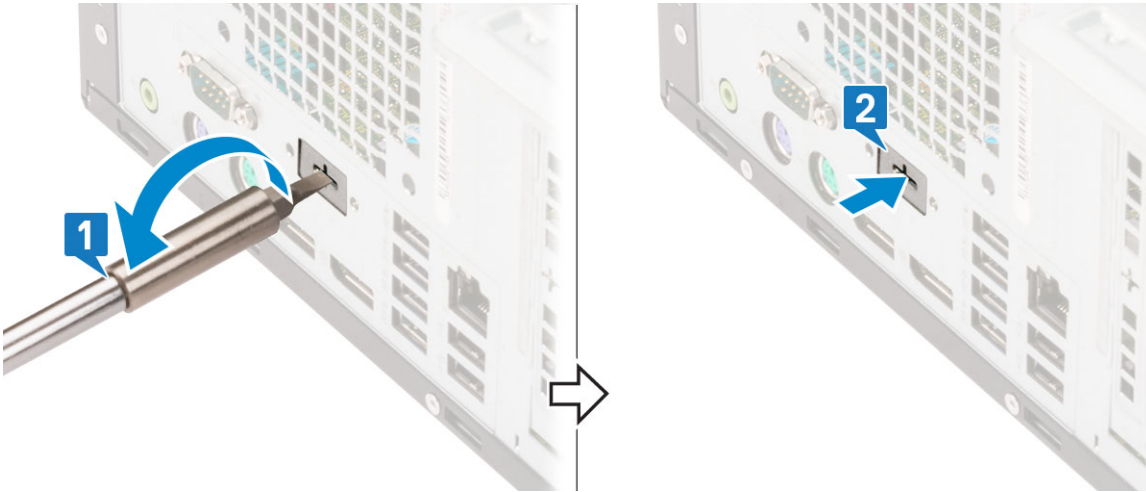
Optional VGA module

Removing optional VGA module

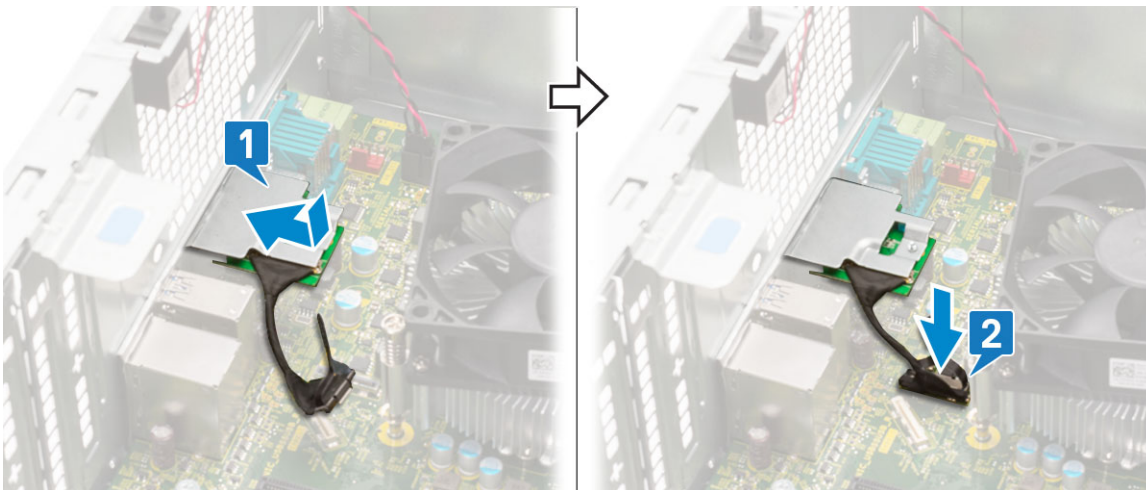
- 1 Follow the procedure in [Before working inside your computer](#).
- 2 Remove the:
 - a [Side cover](#)
 - b [Front bezel](#)
- 3 Open the [front panel door](#).
- 4 Remove the [system fan](#).
- 5 To remove the optional VGA module:
 - a Remove the 2 (M3X3) screws that secure the optional VGA module to the system [1].
 - b Disconnect the VGA cable from the connector on the system board.
 - c Remove the VGA module from the system.

Installing optional VGA module

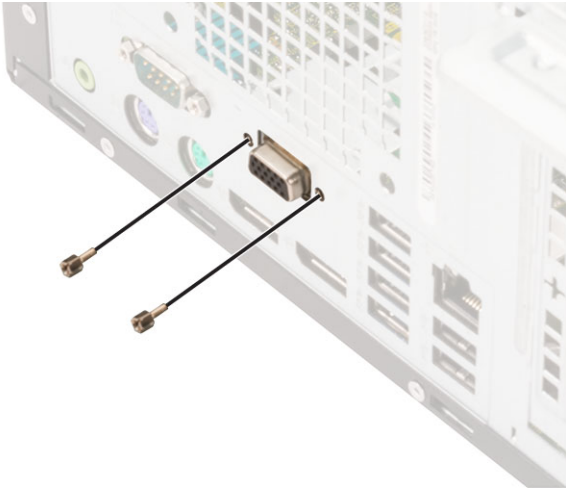
- 1 To remove the metal bracket as shown below, insert a flathead screwdriver in the hole of the bracket [1], push the bracket to release the bracket [2], and then lift the bracket out from the system.



- 2 Insert the VGA module into its slot from the inside of your computer [1] and connect the VGA cable to the connector on the system board [2].



- 3 Replace the two (M3X3) screws to secure the optional VGA module to the system.

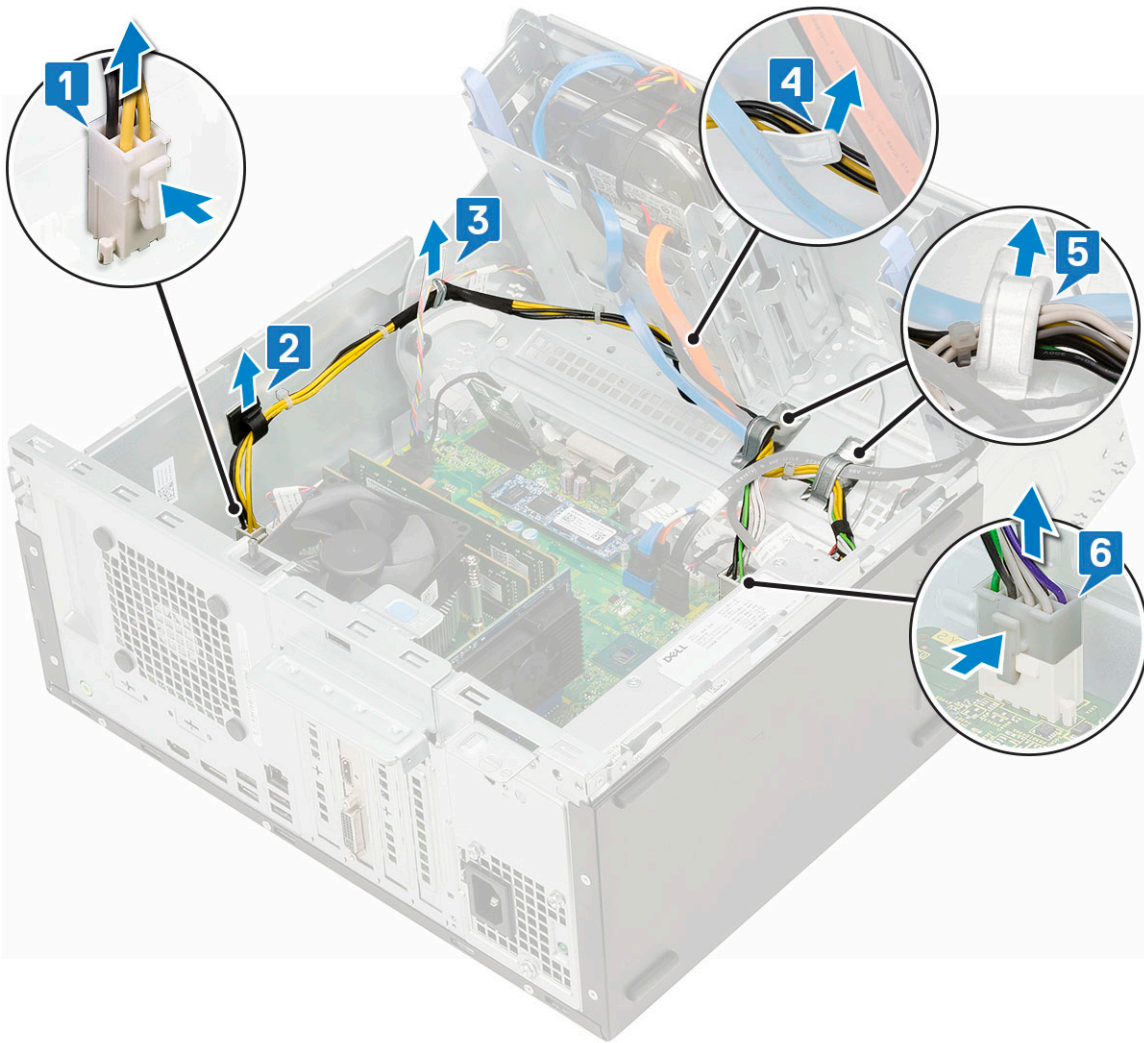


- 4 Install the [system fan](#) .
- 5 Close the .
- 6 Install the:
 - a
 - b
- 7 Follow the procedure in [After working inside your computer](#).

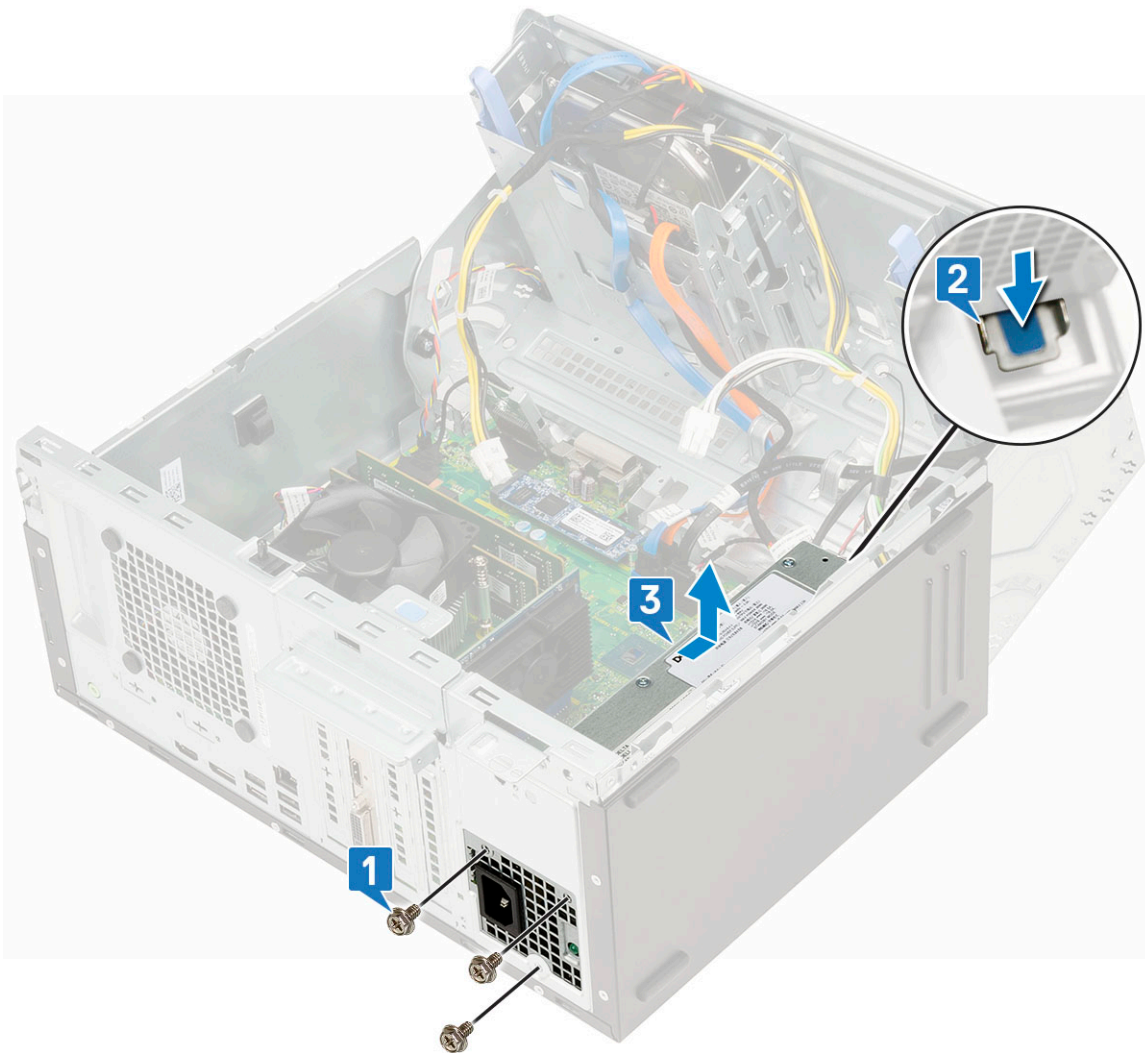
Power supply unit

Removing power supply unit or PSU

- 1 Follow the procedure in [Before working inside your computer](#).
- 2 Remove the:
 - a [Side cover](#)
 - b [Front bezel](#)
- 3 Open the [front panel door](#).
- 4 To release the PSU:
 - a Disconnect the PSU cables from the connectors on the system board [1].
 - b Pull the clips and unroute the PSU cables [2, 3].
 - c Unroute the PSU cables from the retention clips [4, 5, 6].

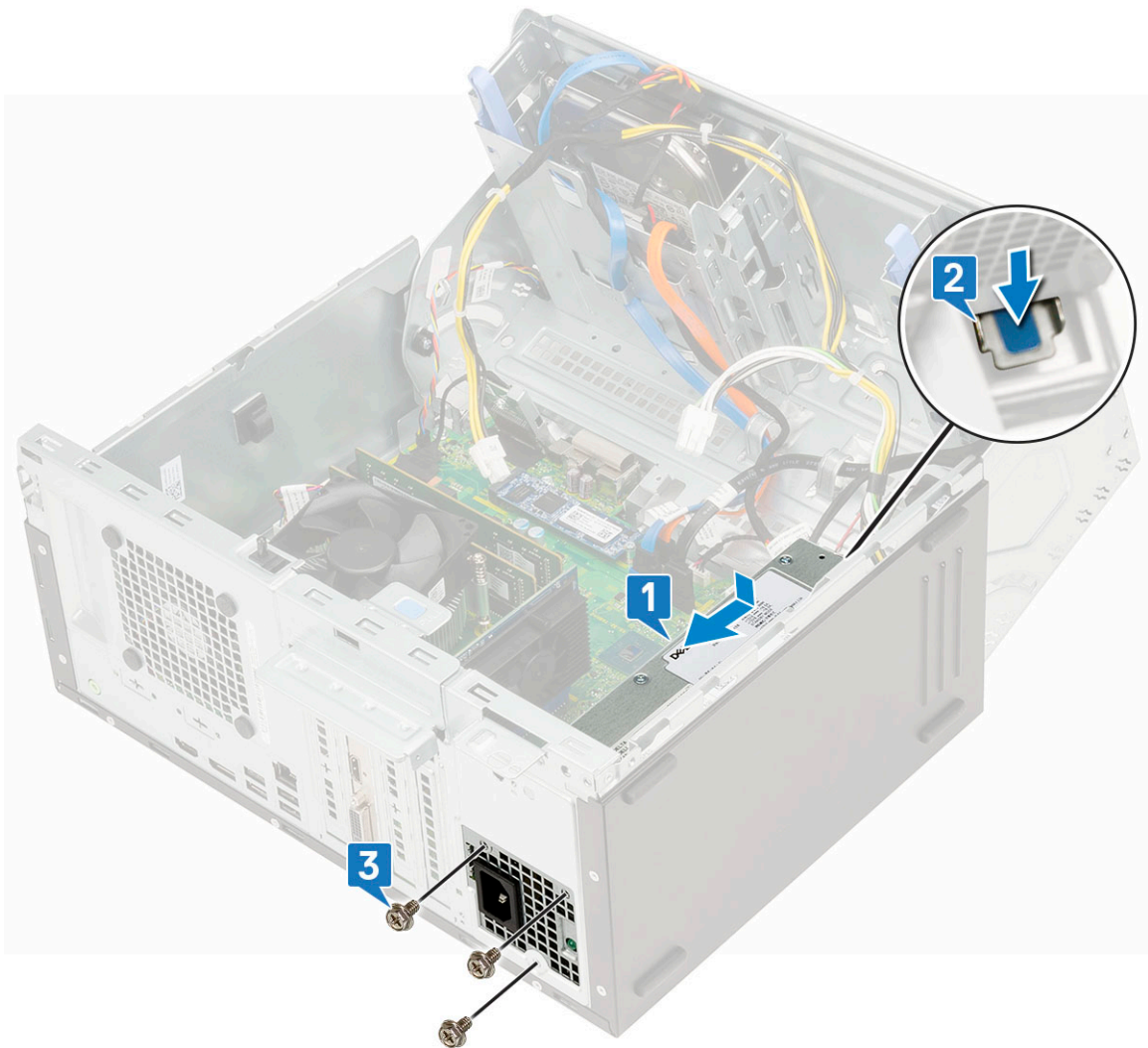


- 5 To remove the PSU:
- a Remove the 3 screws that secure the PSU to the system [1].
 - b Press the release tab [2].
 - c Slide and lift the PSU away from the computer [3].

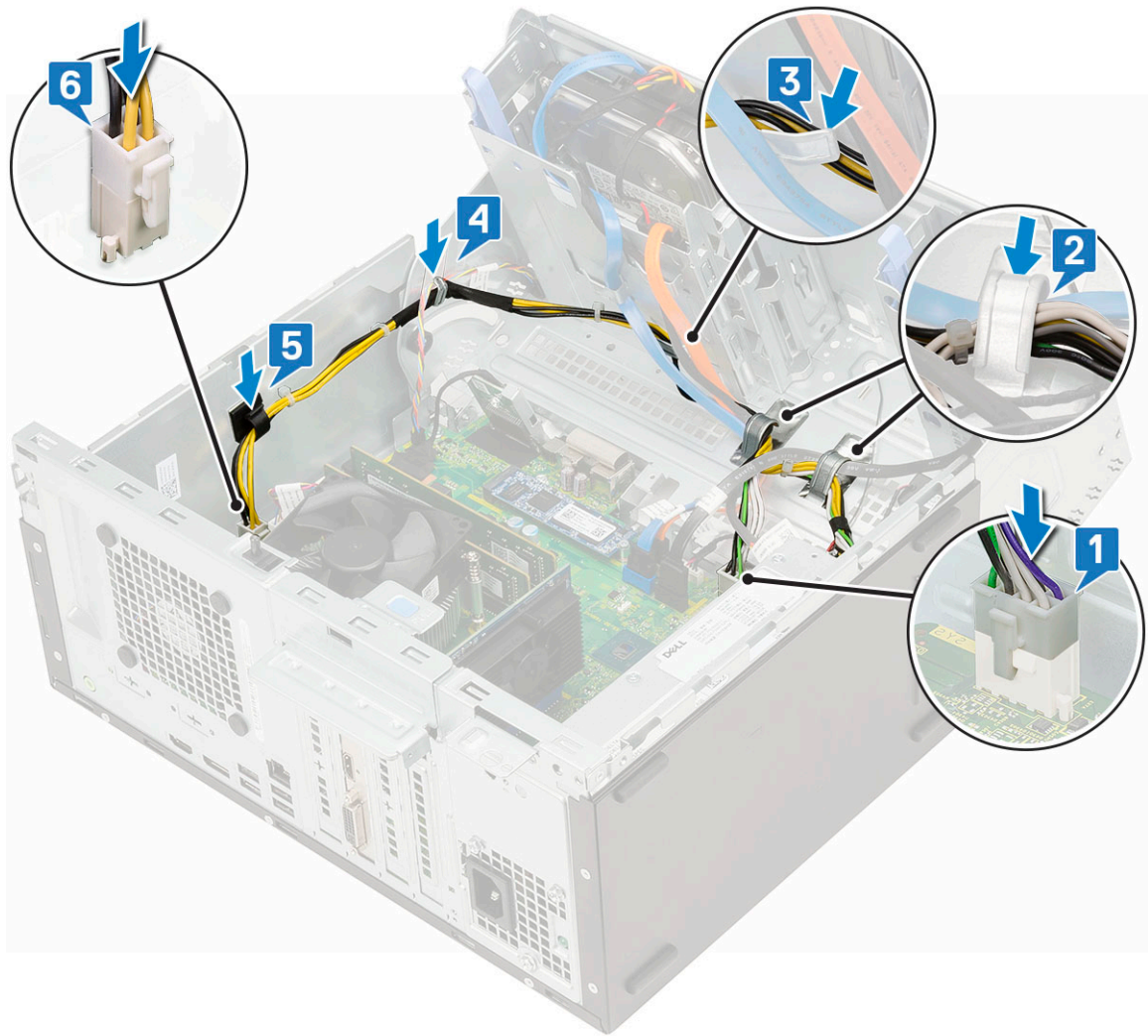


Installing power supply unit or PSU

- 1 To install the PSU:
 - a Insert the PSU into the PSU slot and slide it towards the back of the system until it clicks into place [1] [2].
 - b Replace the three screws to secure the PSU to the computer [3].



- c Connect the PSU cables to the connectors on the system board [1].
- d Route the PSU cables through the retention clips [2,3,4,5,6].

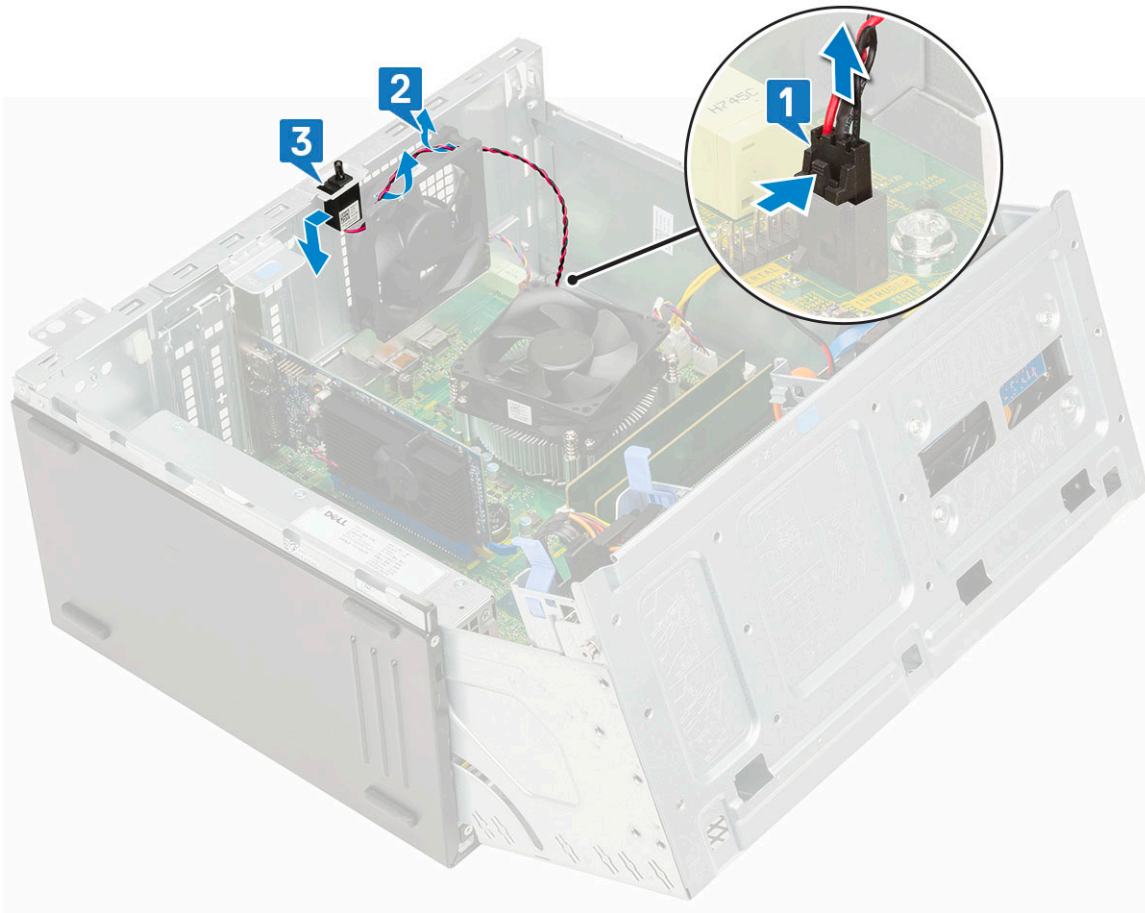


- 2 Close the [front panel door](#).
- 3 Install the:
 - a [Front bezel](#)
 - b [Side cover](#)
- 4 Follow the procedure in [After working inside your computer](#).

Intrusion switch

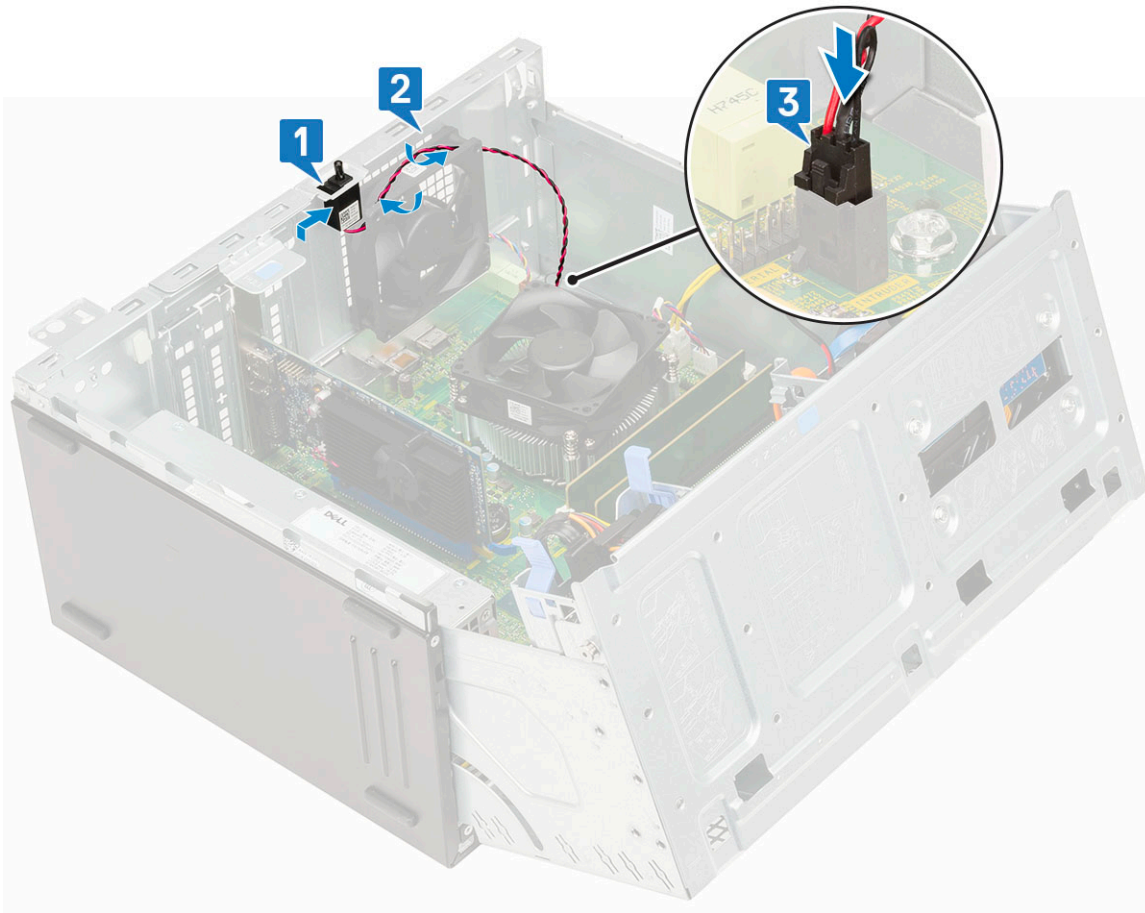
Removing intrusion switch

- 1 Follow the procedure in [Before working inside your computer](#).
- 2 Remove the:
 - a [Side cover](#)
 - b [Front bezel](#)
- 3 Open the [front panel door](#).
- 4 To remove the intrusion switch:
 - a Disconnect the intrusion switch cable from the connector on the system board [1].
 - b Unroute the intrusion switch cable from the fan grommets [2].
 - c Slide the intrusion switch and push it to remove from the computer [3].



Installing intrusion switch

- 1 Insert the intrusion switch into the slot on the system [1].
- 2 Route the intrusion switch cable through the fan grommet [2].
- 3 Connect the intrusion switch cable to the connector on the system board [3].

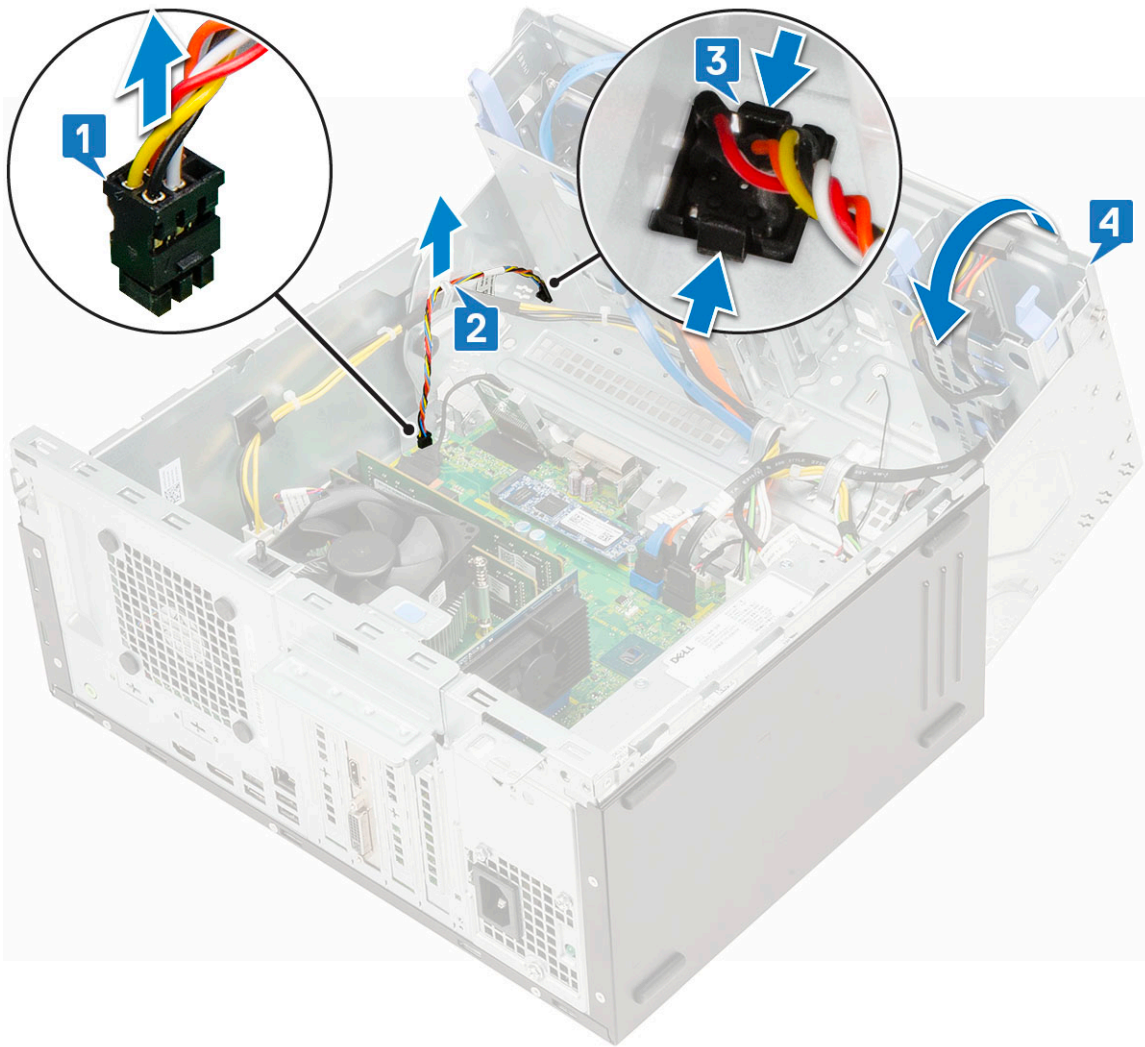


- 4 Close the [front panel door](#).
- 5 Install the:
 - a [Front bezel](#)
 - b [Side cover](#)
- 6 Follow the procedure in [After working inside your computer](#).

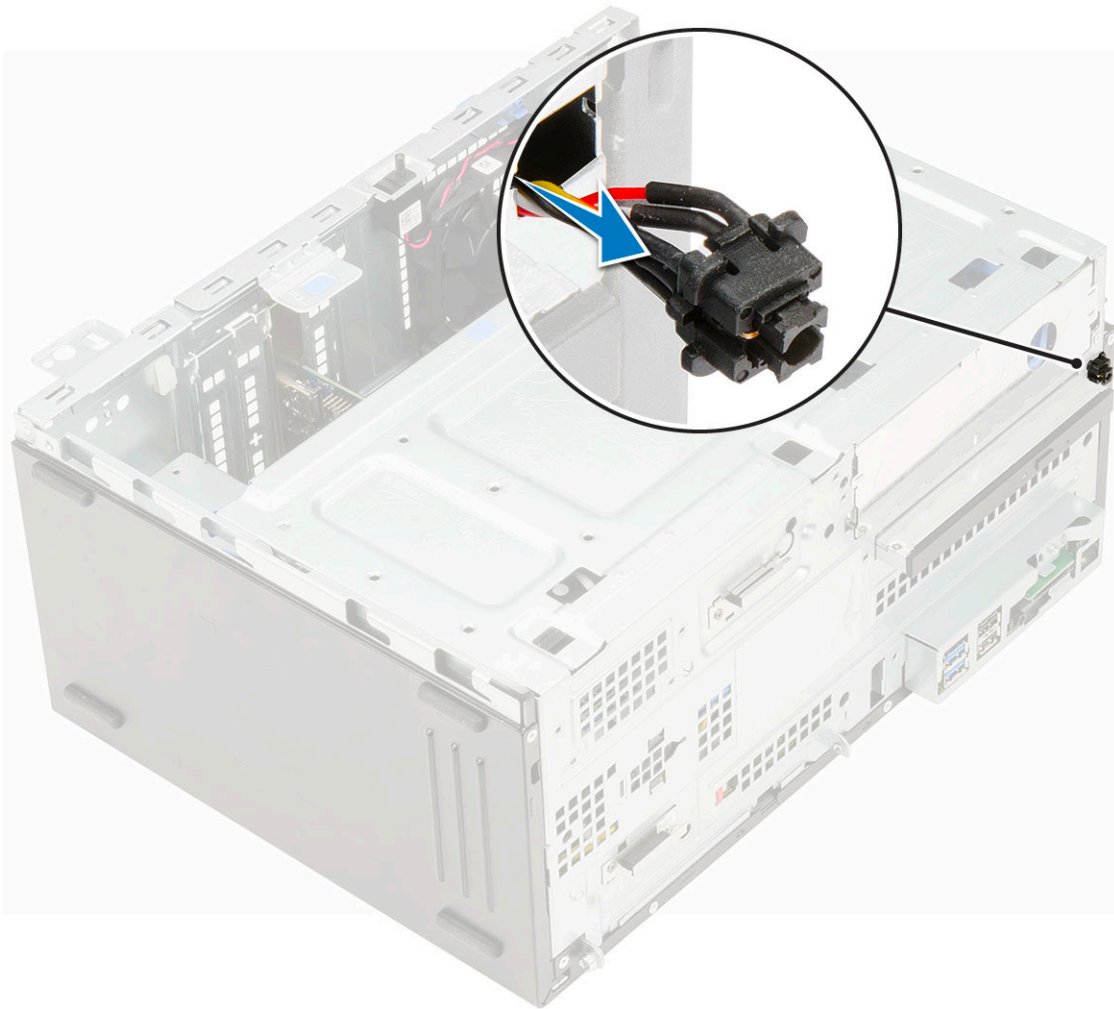
Power button

Removing power button

- 1 Follow the procedure in [Before working inside your computer](#).
- 2 Remove the:
 - a [Side cover](#)
 - b [Front bezel](#)
- 3 Open the [front panel door](#).
- 4 To release the power button:
 - a Disconnect the power button cable from the system board [1].
 - b Unroute the power button cable through the retention clip [2].
 - c Press the release tabs using a plastic scribe and slide the power button out from the front of the system [3].
 - d Close the front panel door [4].

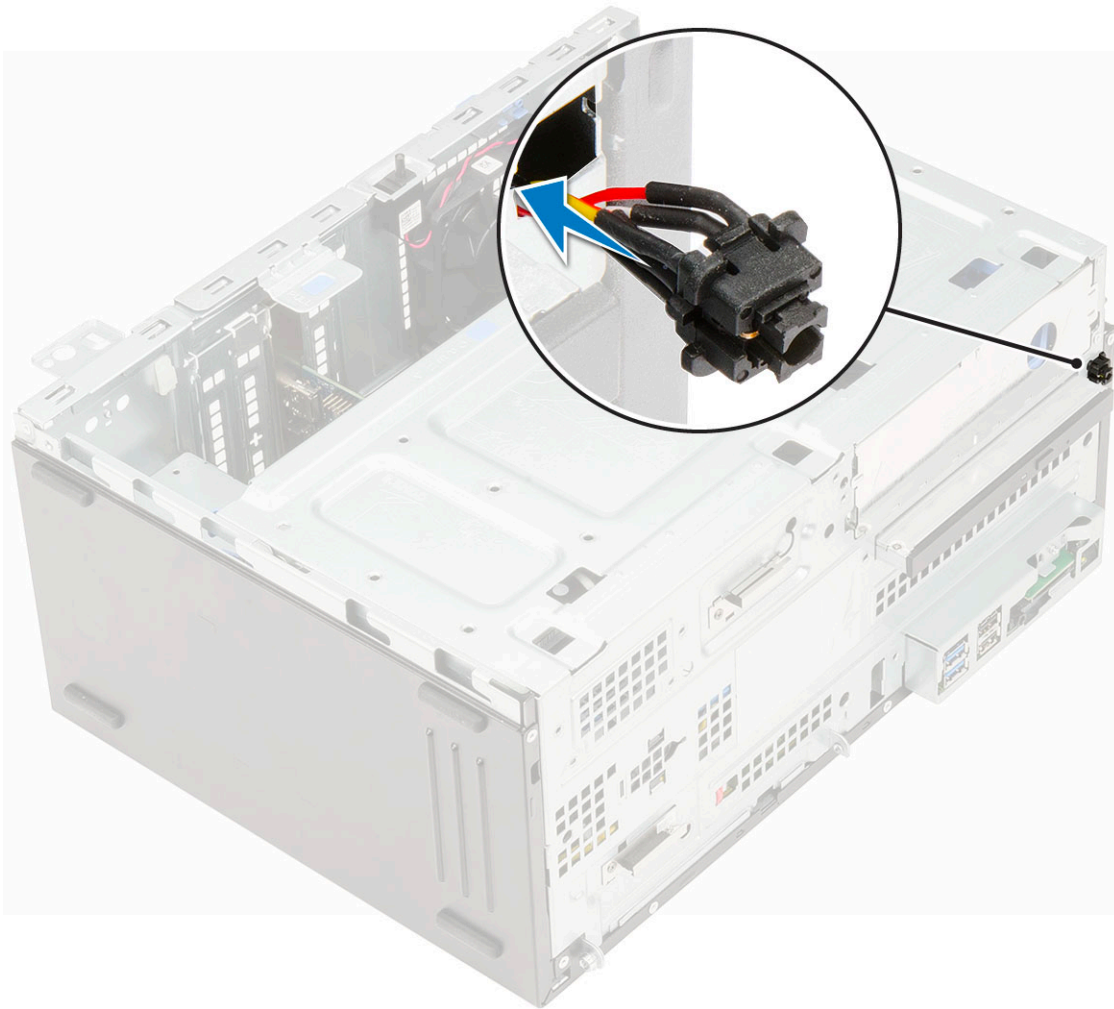


5 Pull the power button out from the computer [1].

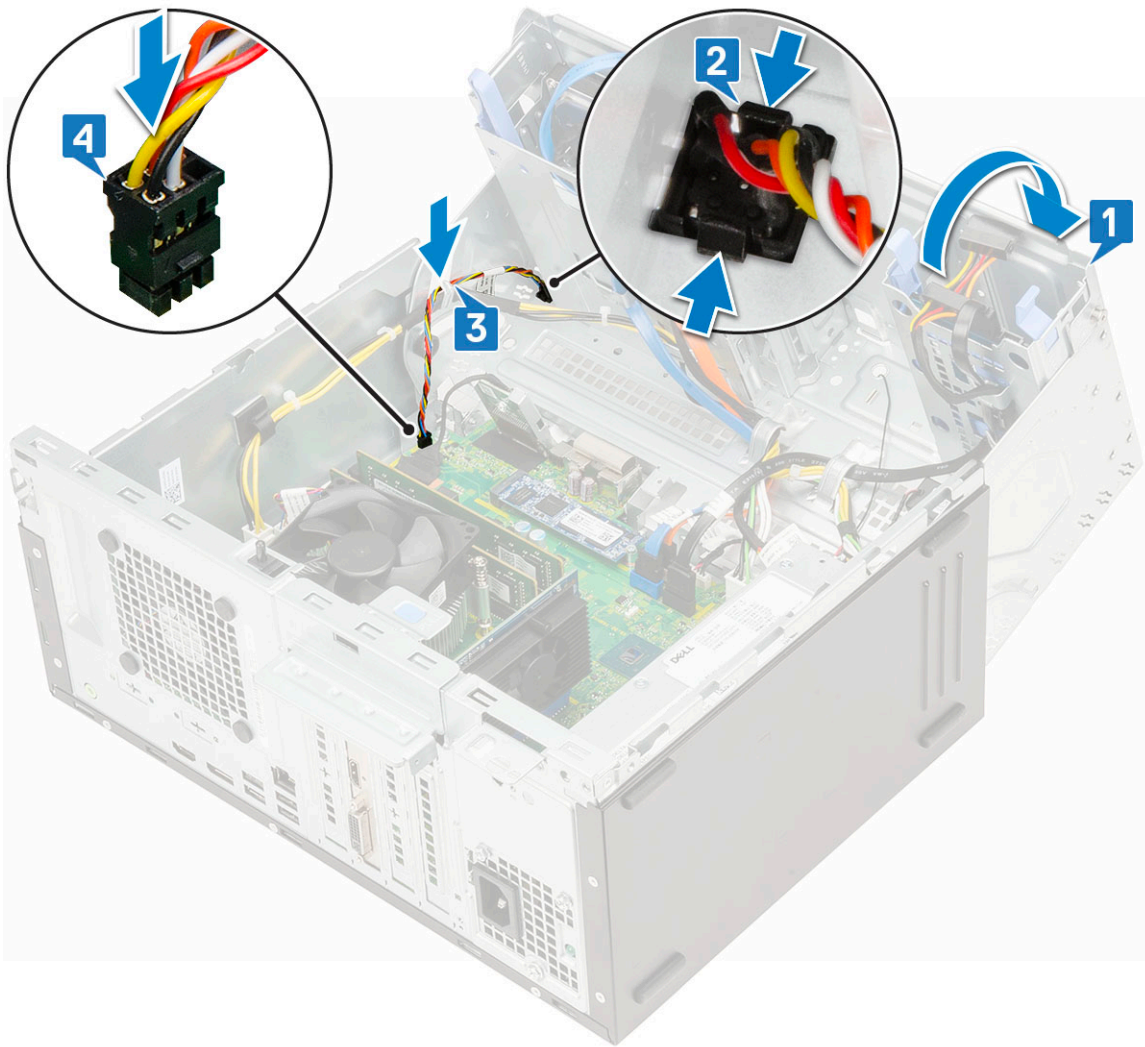


Installing power button

- 1 Insert the power switch into the slot from the front of the computer and press it until it clicks into place.



- 2 Open the front panel door [1]
- 3 Route the power switch cable from the power button through the retention clip [2, 3].
- 4 Align the cable with the pins on the connector and connect the power button cable [4].

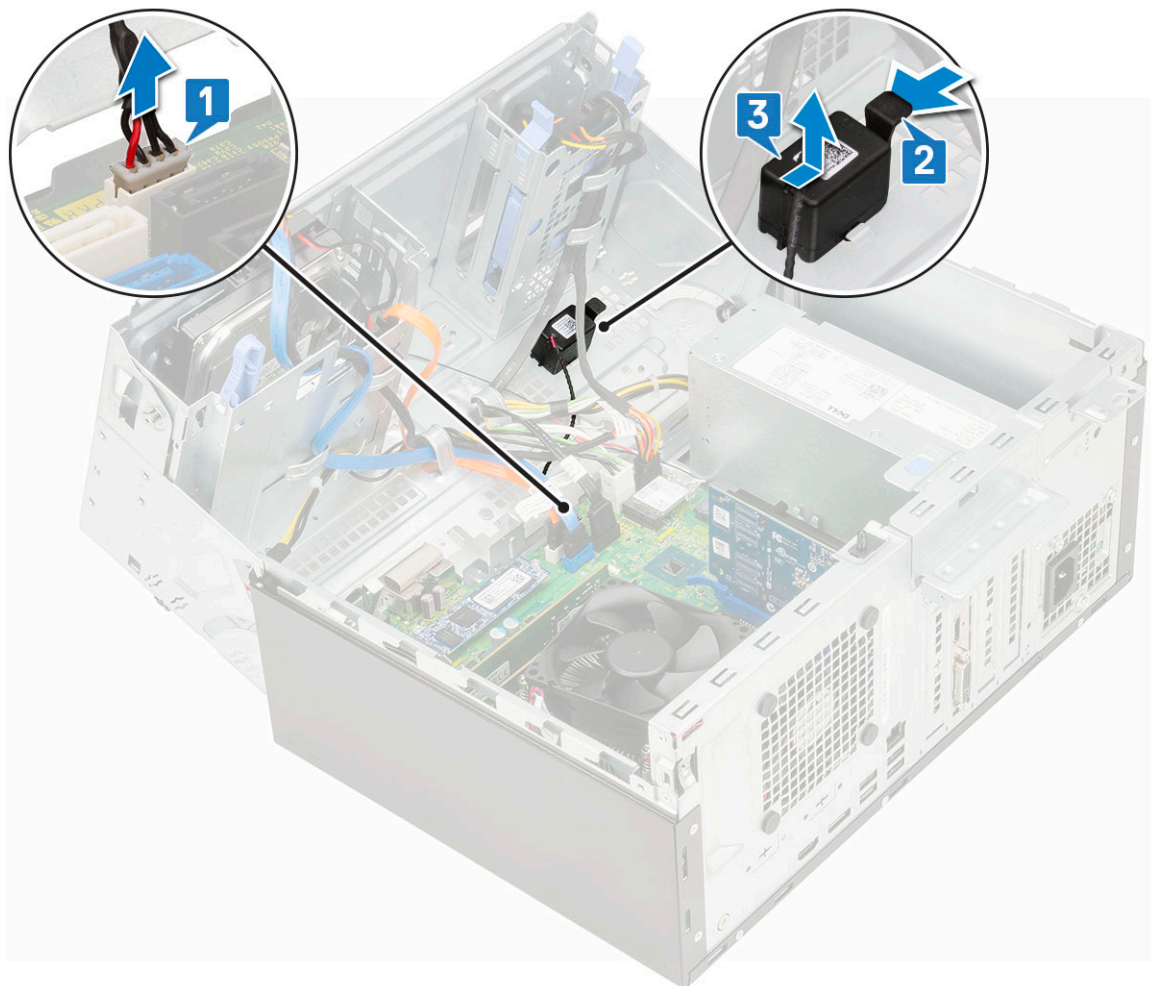


- 5 Close the [front panel door](#).
- 6 Install the:
 - a [Front bezel](#)
 - b [Side cover](#)
- 7 Follow the procedure in [After working inside your computer](#).

Speaker

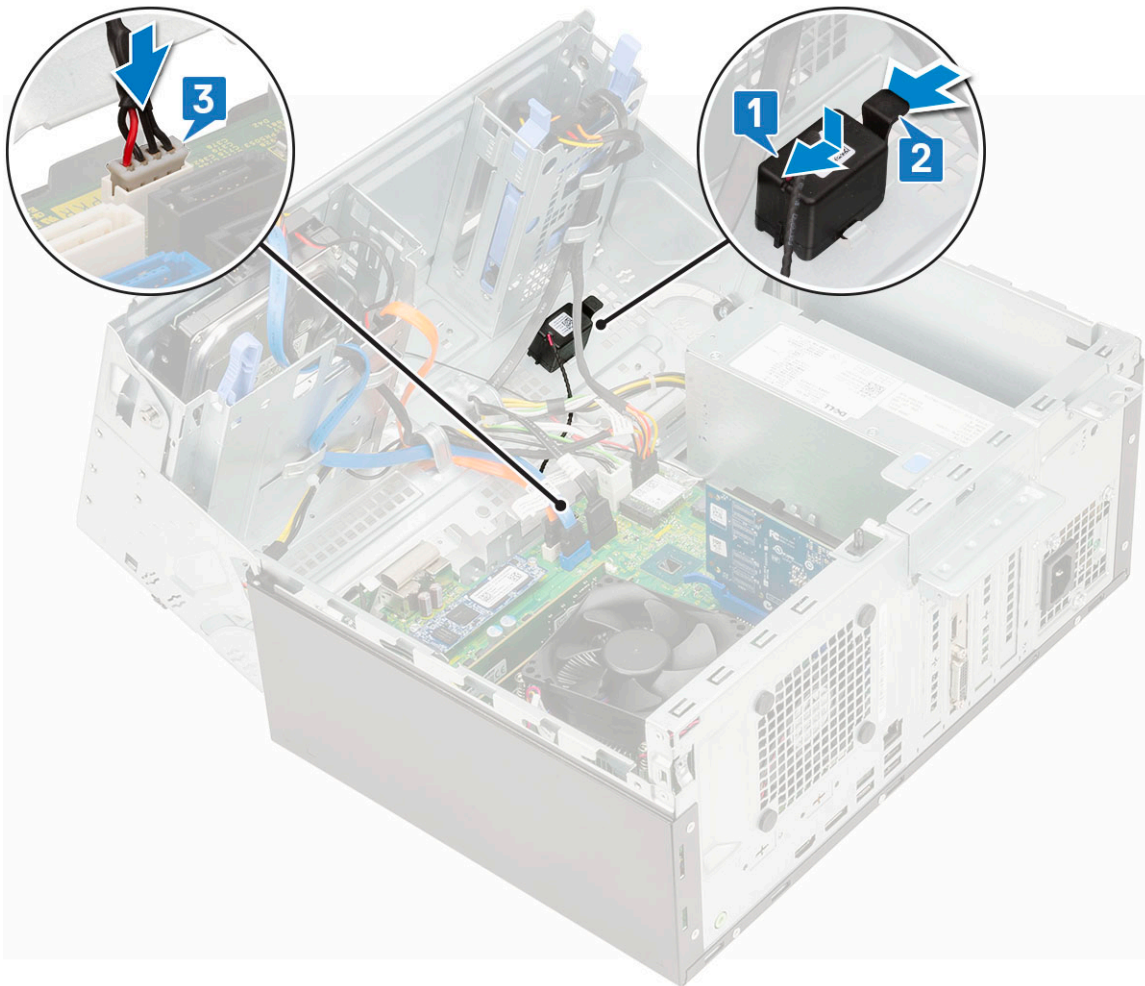
Removing speaker

- 1 Follow the procedure in [Before working inside your computer](#).
- 2 Remove the:
 - a [Side cover](#)
 - b [Front bezel](#)
- 3 Open the [front panel door](#).
- 4 To remove the speaker:
 - a Disconnect the speaker cable from the connector on the system board [1].
 - b Lift the tab [2], and slide the speaker out of the slot [3].



Installing speaker

- 1 Insert the speaker into the slot and press it until it clicks into place [1, 2].
- 2 Connect the speaker cable to the connector on the system board [3].

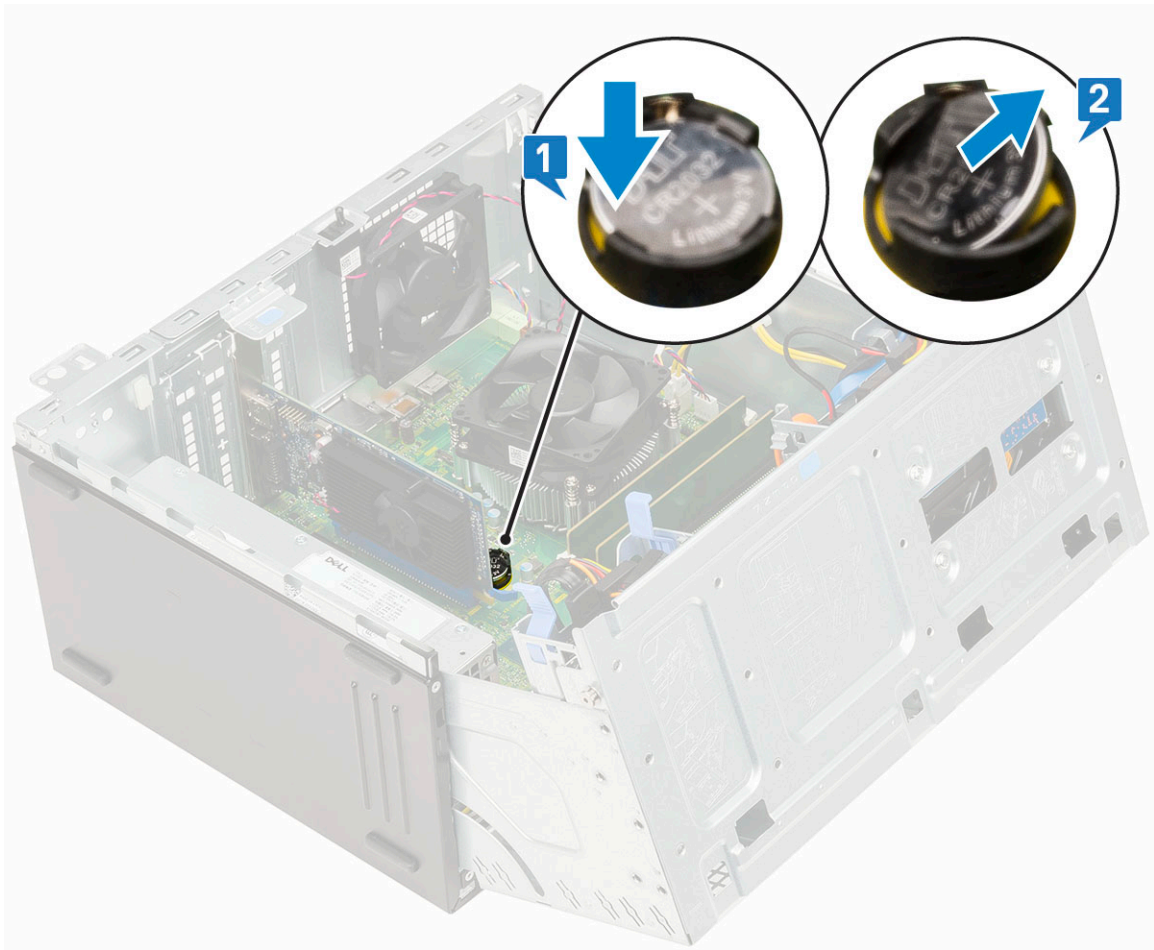


- 3 Close the [front panel door](#).
- 4 Install the:
 - a [Front bezel](#)
 - b [Side cover](#)
- 5 Follow the procedure in [After working inside your computer](#).

Coin cell battery

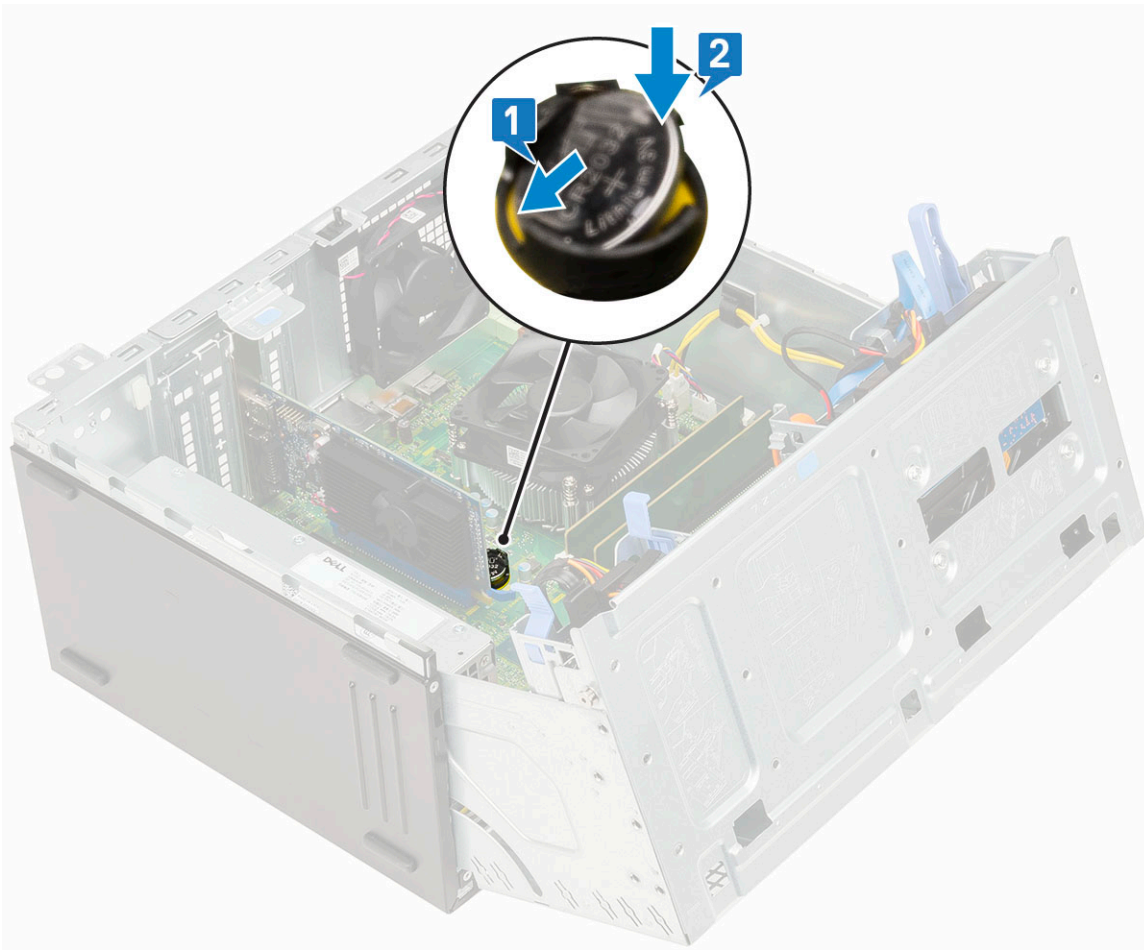
Removing coin cell battery

- 1 Follow the procedure in [Before working inside your computer](#).
- 2 Remove the:
 - a [Side cover](#)
 - b [Front bezel](#)
- 3 Open the [front panel door](#).
- 4 To remove the coin cell battery:
 - a Press the release latch until the coin cell battery pops out [1].
 - b Remove the coin cell battery from the connector on the system board [2].



Installing the coin cell battery

- 1 Hold the coin cell battery with the "+" sign facing up and slide it under the securing tabs at the positive side of the connector [1].
- 2 Press the battery into the connector until it locks into place [2].

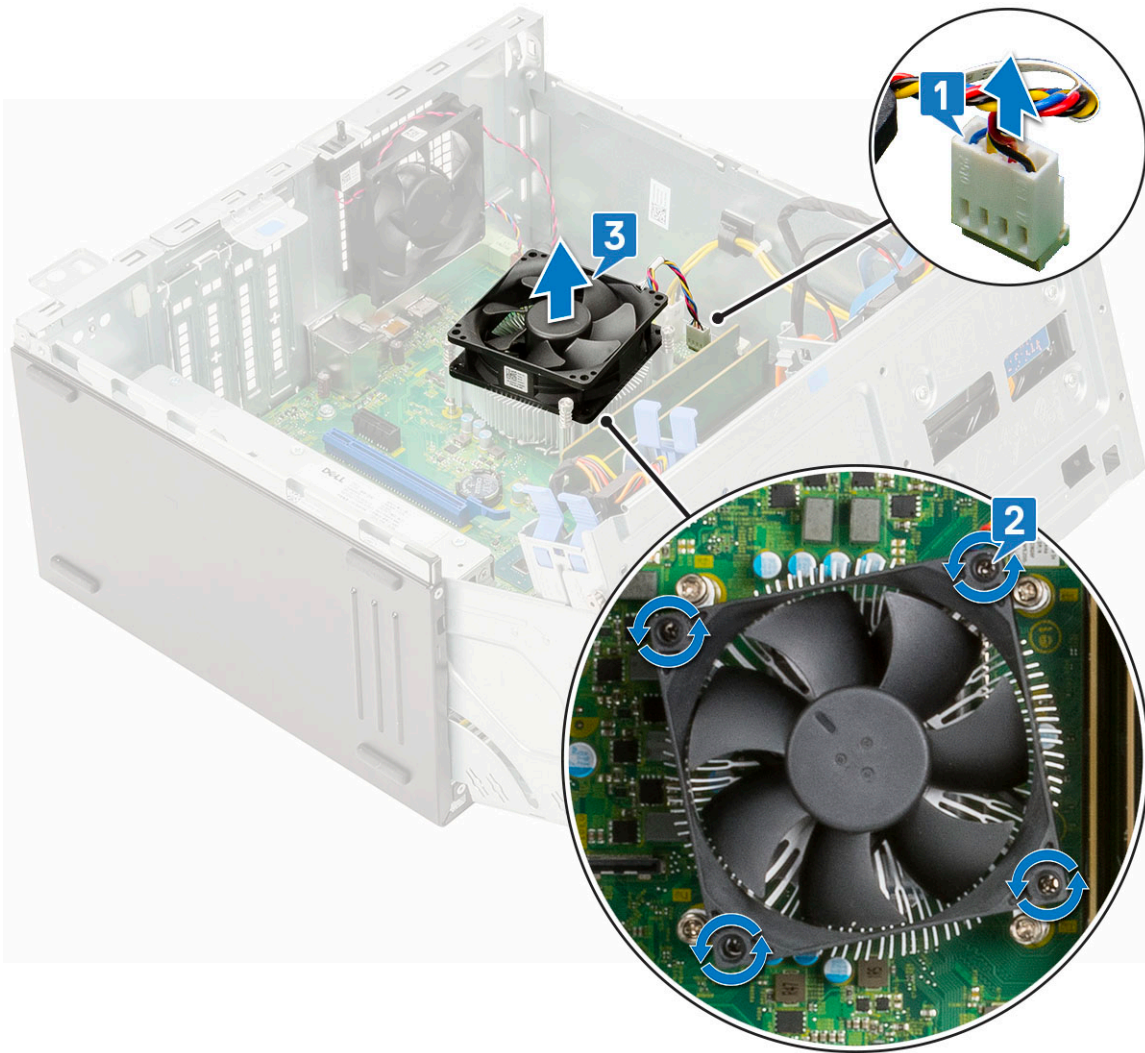


- 3 Close the [front panel door](#).
- 4 Install the:
 - a [Front bezel](#)
 - b [Side cover](#)
- 5 Follow the procedure in [After working inside your computer](#).

Heat sink fan

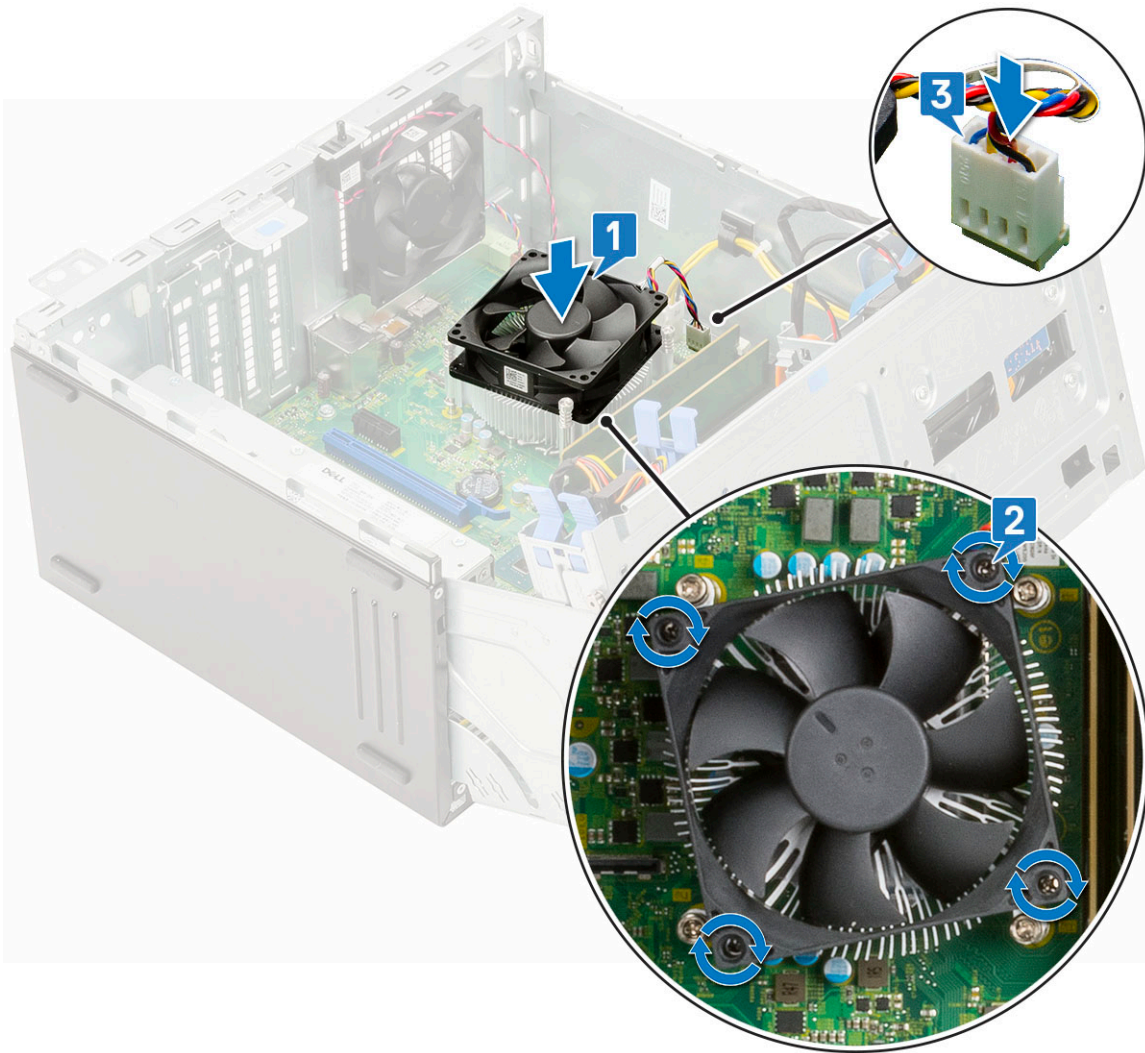
Removing heat sink fan

- 1 Follow the procedure in [Before working inside your computer](#).
- 2 Remove the:
 - a [Side cover](#)
 - b [Front bezel](#)
- 3 Open the [front panel door](#).
- 4 To remove the heat sink fan:
 - a Disconnect the heat sink assembly cable from the connector on the system board [1].
 - b Remove the screws that secure the fan to the heat sink [2].
ⓘ | NOTE: Ensure to insert the Torx screw driver from top screw hole to remove the screws.
 - c Lift the heat sink fan away from the computer [3].



Installing heat sink fan

- 1 Place the fan on the heat sink [1].
- 2 Tighten the screws (4) to secure the fan to the heat sink [2].
- 3 Connect the heat sink assembly cable to the connector on the system board [3].



- 4 Close the [front panel door](#).
- 5 Install the:
 - a [Front bezel](#)
 - b [Side cover](#)
- 6 Follow the procedure in [After working inside your computer](#).

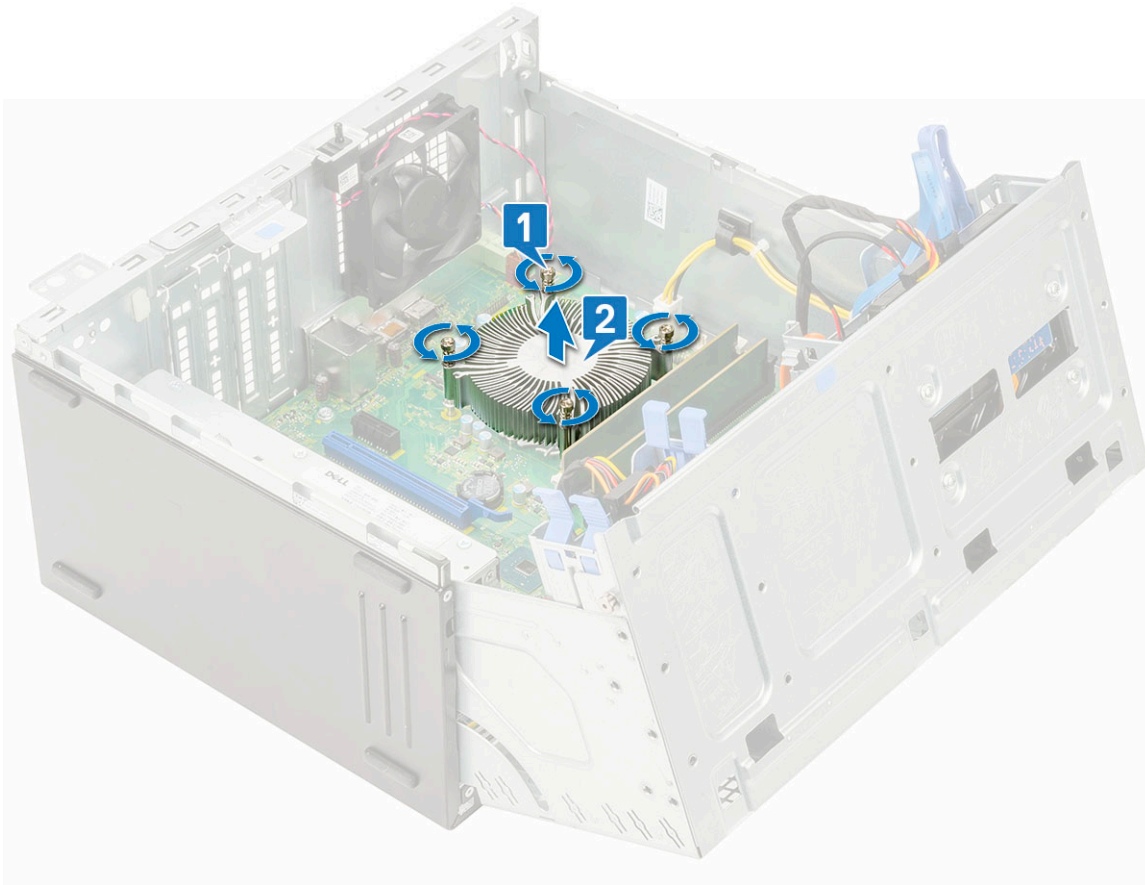
Heat sink

Removing heat sink

- 1 Follow the procedure in [Before working inside your computer](#).
- 2 Remove the:
 - a [Side cover](#)
 - b [Front bezel](#)
- 3 Open the [front panel door](#).
- 4 Remove the [heatsink fan](#).
- 5 To remove the heat sink:
 - a Loosen the captive screws (4) that secure the heat sink to the system board [1].

NOTE: Remove the screw in the sequential order (1,2,3,4) as printed on the system board.

- b Lift the heat sink away from the computer [2].

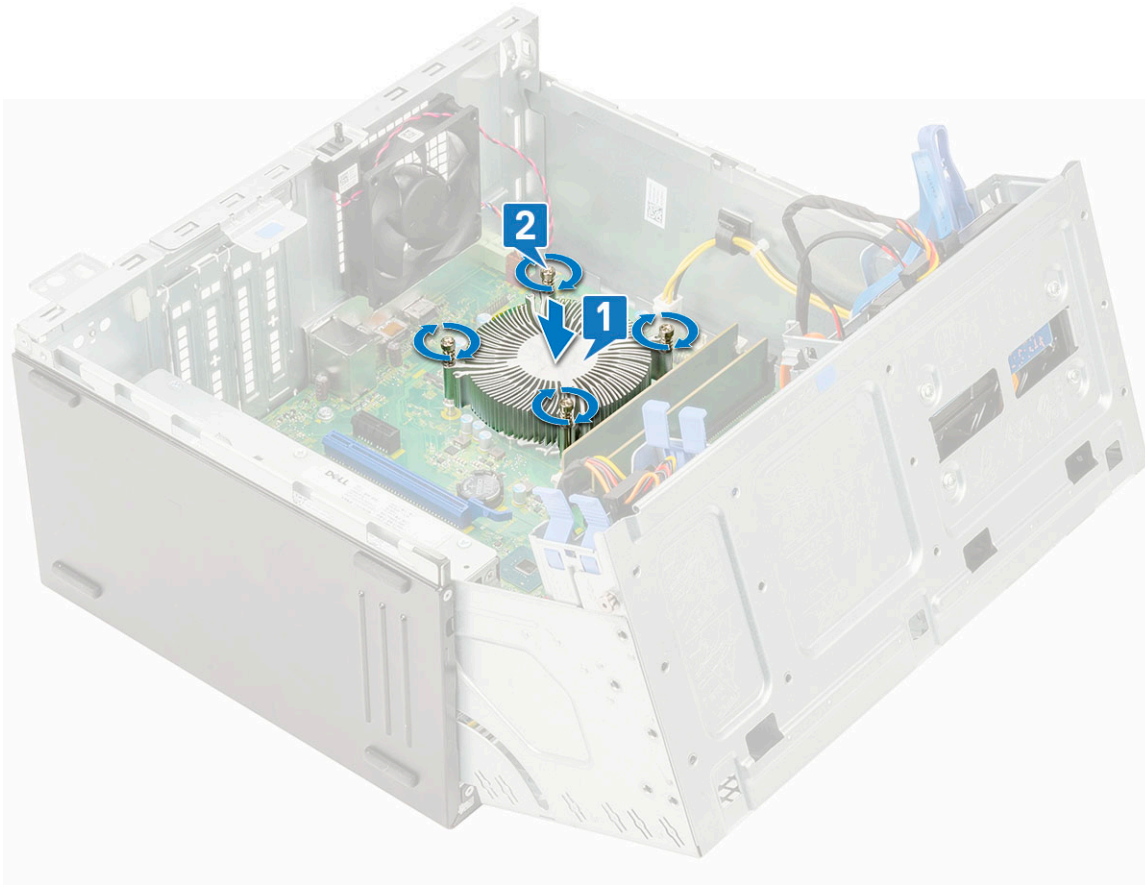


Installing heat sink

- 1 Align the screws of the heat sink with the holders on the system board and place the heat sink on the processor [1].
- 2 Tighten the captive screws to secure the heat sink assembly to the system board [2].

NOTE:

Tighten the screws in a sequential order (1,2,3,4) as printed on the system board.




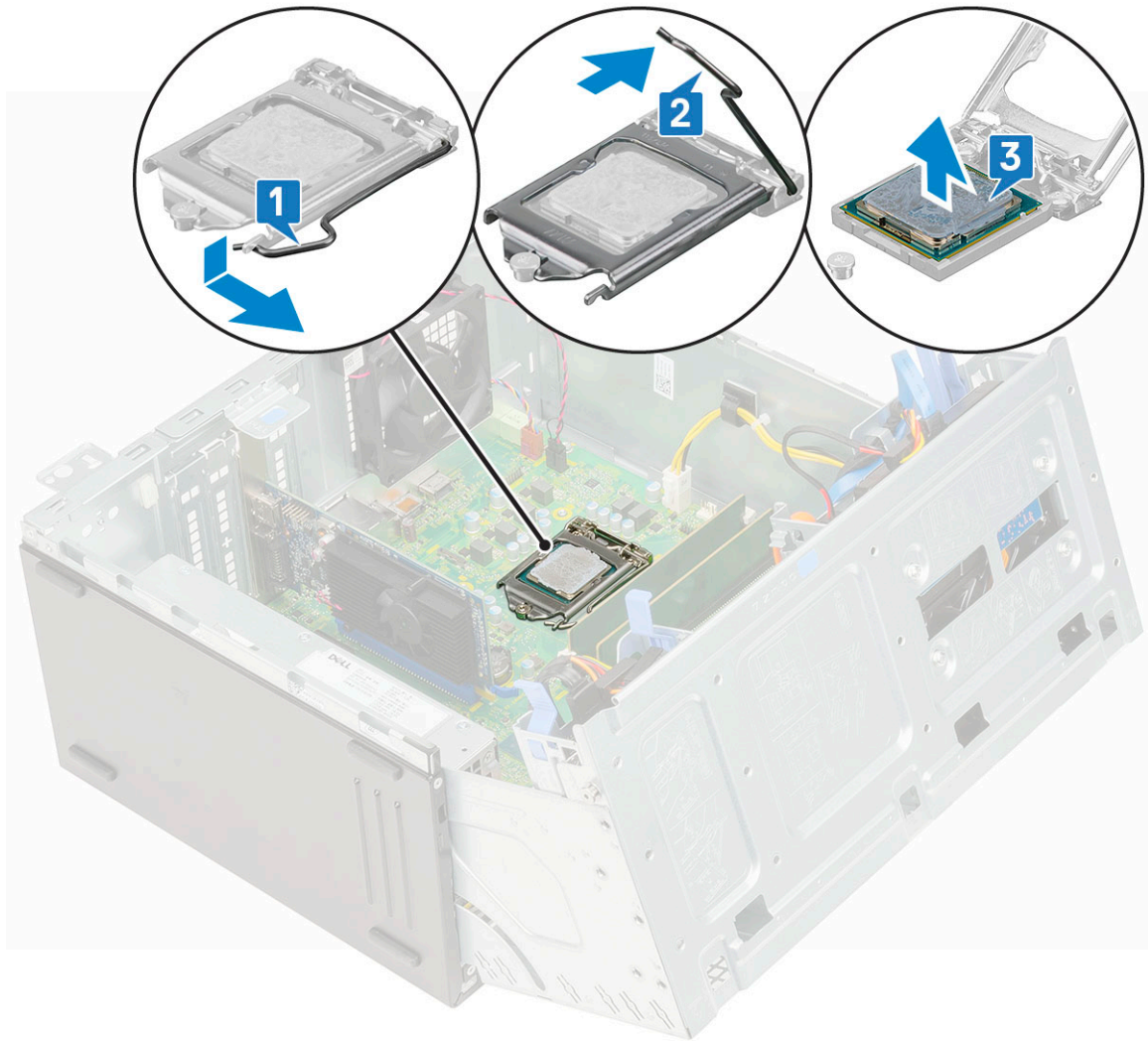
- 3 Replace the [heat sink fan](#).
- 4 Close the [front panel door](#).
- 5 Install the:
 - a [Front bezel](#)
 - b [Side cover](#)
- 6 Follow the procedure in [After working inside your computer](#).

Processor

Removing processor

- 1 Follow the procedure in [Before working inside your computer](#).
- 2 Remove the:
 - a [Side cover](#)
 - b [Front bezel](#)
- 3 Open the [front panel door](#).
- 4 Remove the [heatsink fan](#).
- 5 Remove the [heatsink](#) .
- 6 To remove the processor:
 - a Release the socket lever by pushing the lever down and out from under the tab on the processor shield [1].
 - b Lift the lever upward and lift the processor shield [2].
 - c Lift the processor out of the socket [3].

 **CAUTION:** Do not touch the processor socket pins, they are fragile and can be permanently damaged. Be careful not to bend the pins in the processor socket when removing the processor out of the socket.

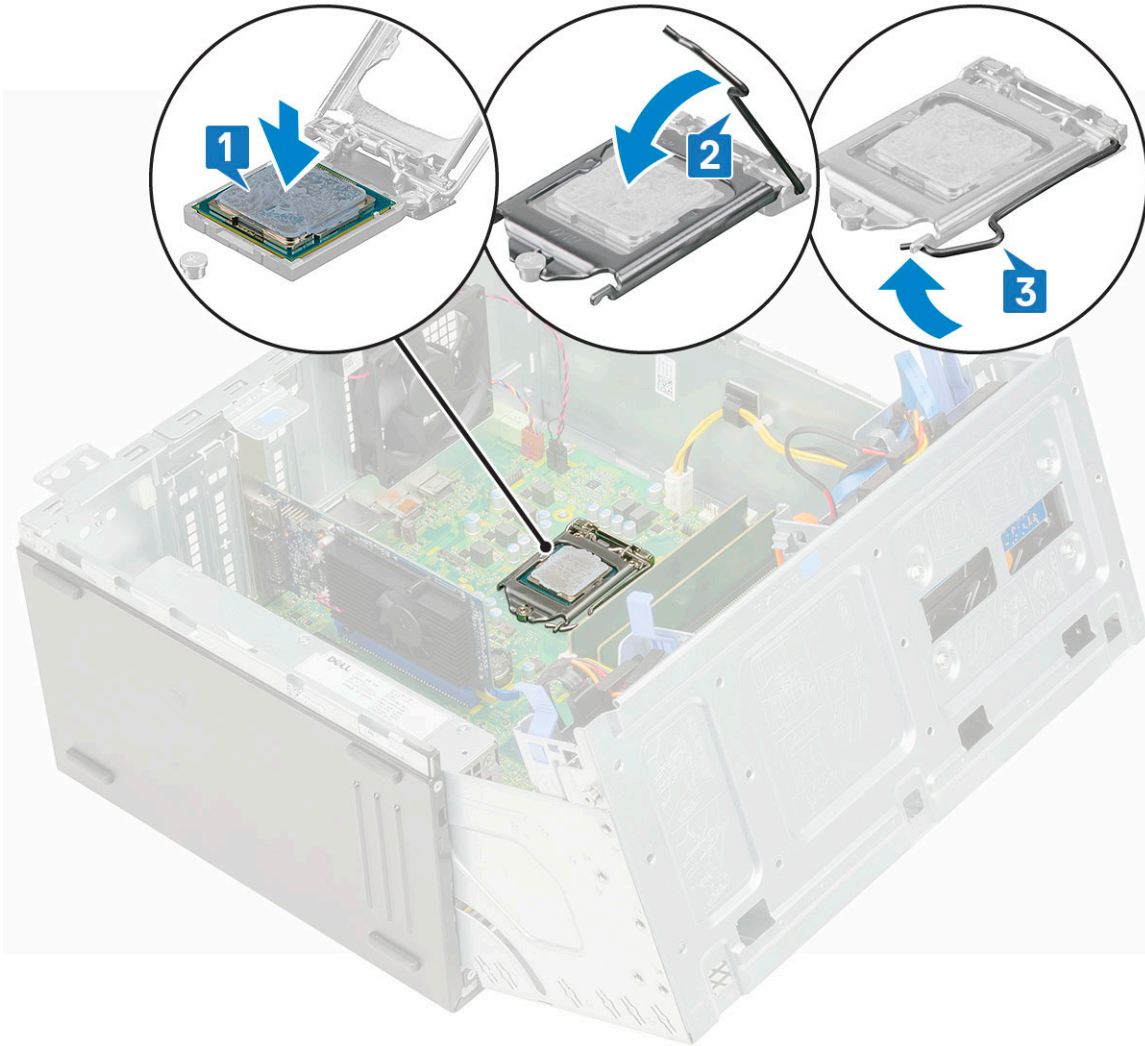


Installing processor

- 1 Place the processor on the socket such that the slots on the processor align with the socket keys [1].

CAUTION: Do not use force to seat the processor. When the processor is positioned correctly, it engages easily into the socket.

- 2 Close the processor shield by sliding it under the retention screw [2].
- 3 Lower the socket lever and push it under the tab to lock it [3].



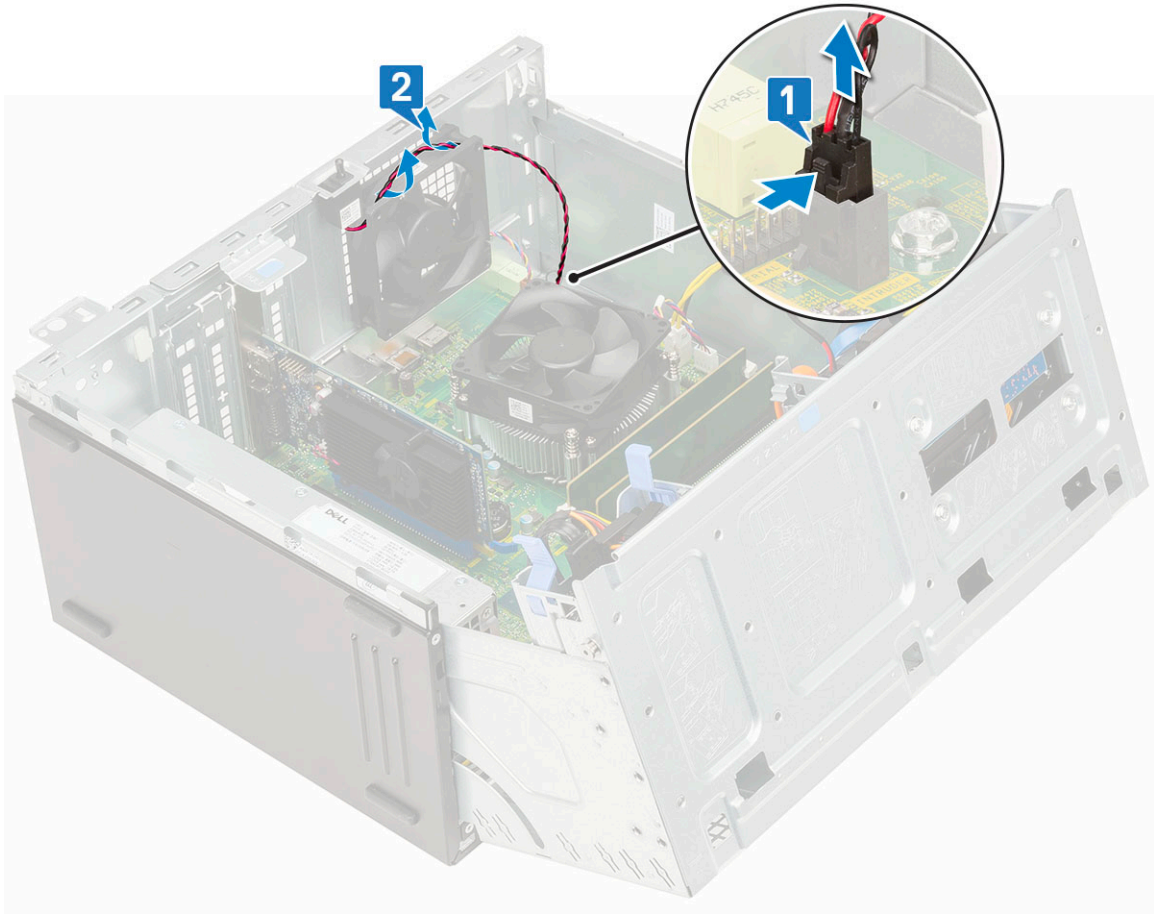
- 4 Install the [heatsink](#).
- 5 Install the [heatsink fan](#).
- 6 Close the [front panel door](#).
- 7 Install the:
 - a [Front bezel](#)
 - b [Side cover](#)
- 8 Follow the procedure in [After working inside your computer](#).

System fan

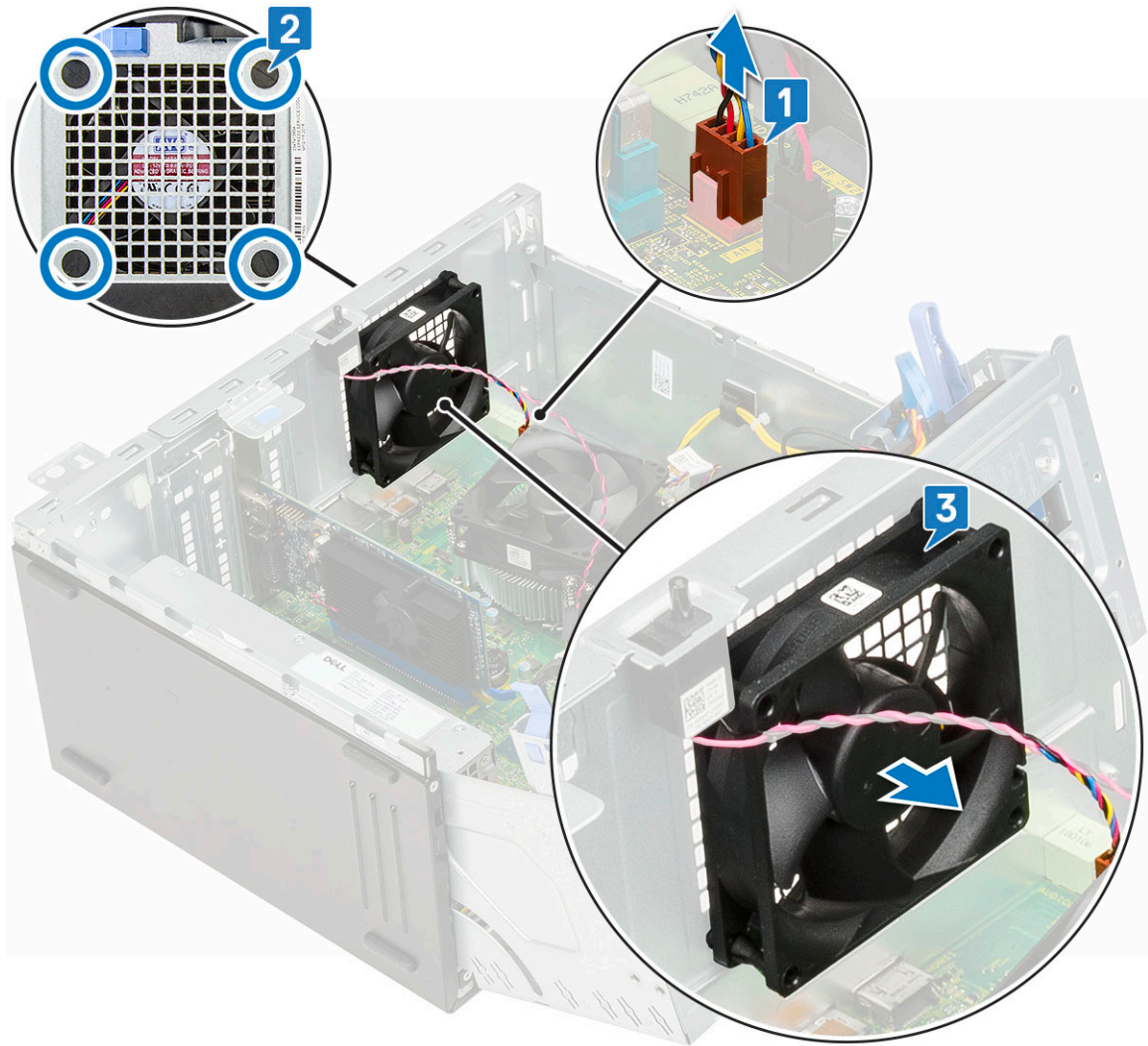
Removing system fan

- 1 Follow the procedure in [Before working inside your computer](#).
- 2 Remove the:
 - a [Side cover](#)
 - b [Front bezel](#)
 - c [Intrusion switch](#)
- 3 Open the [front panel door](#).
- 4 To remove the system fan:

- a Disconnect the intrusion switch cable from the connector on the system board [1].
- b Unroute the intrusion switch cable from the fan grommet [2].



- c Disconnect the system fan cable from the connector on the system board [1].
- d Stretch the grommets securing the fan to the computer to ease the removal of the fan [2].
- e Slide the system fan out of the computer [3].

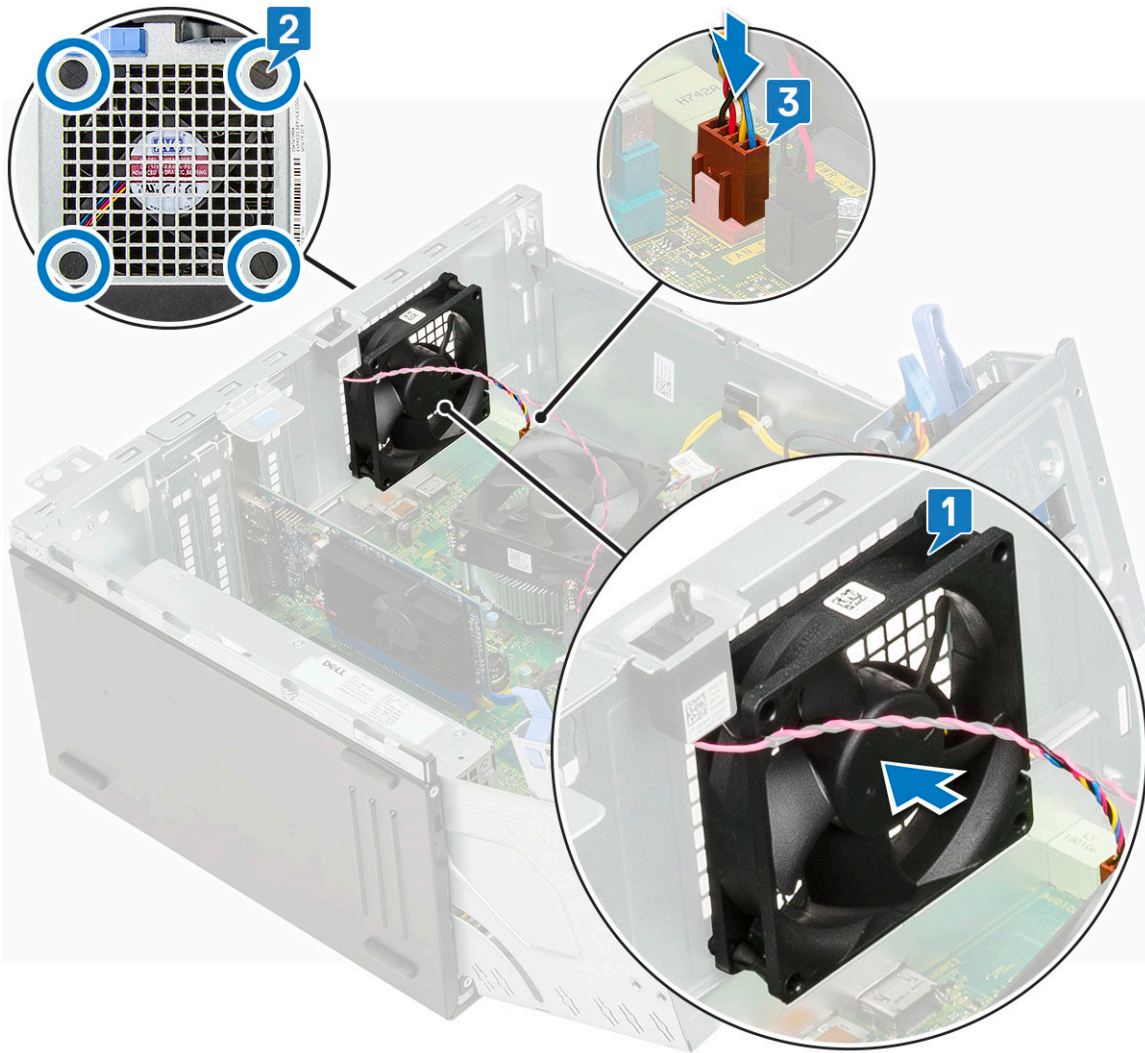


Installing system fan

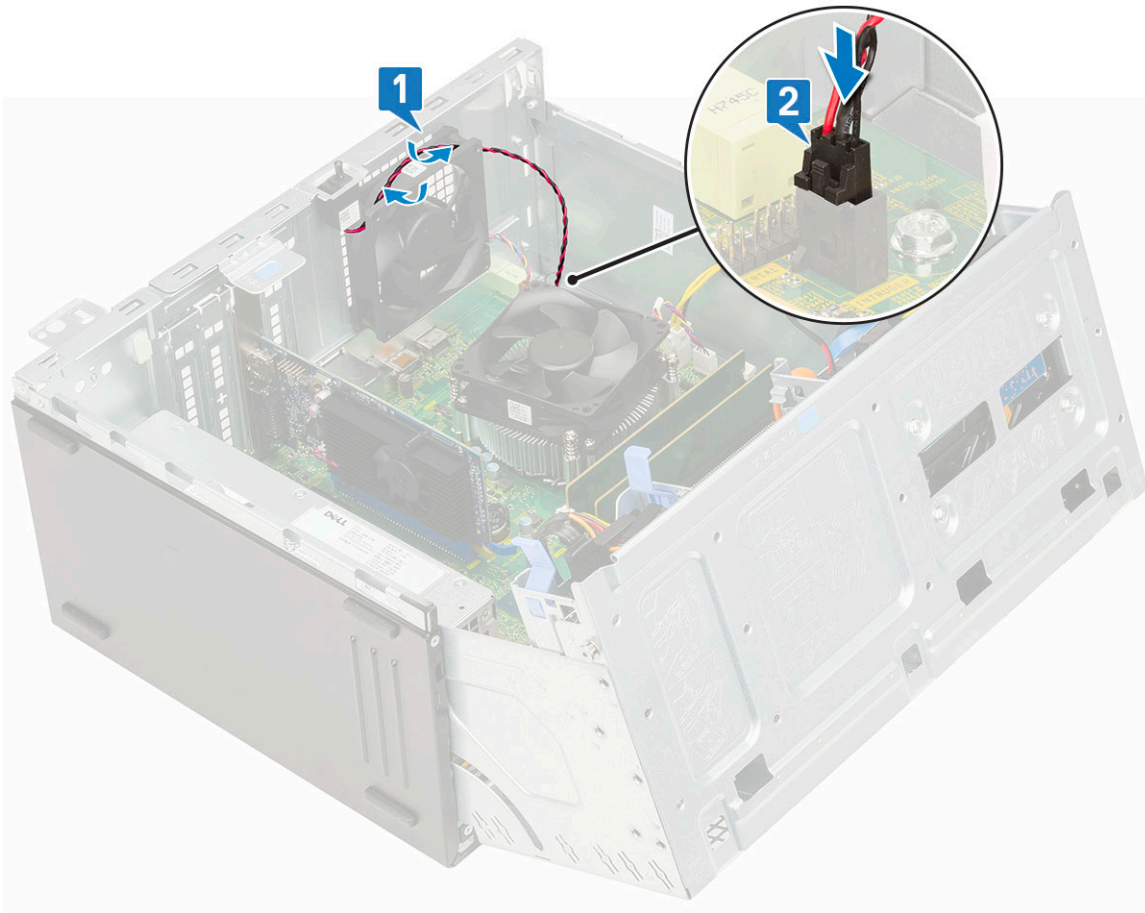
- 1 Insert the grommets into the slots on the back of the computer.
- 2 Hold the system fan with the cable facing the bottom of the computer.
- 3 Align the grooves of the system fan with the grommets on the chassis wall.
- 4 Pass the grommets through the corresponding grooves on the system fan [1].
- 5 Stretch the grommets and slide the system fan toward the computer until it locks into place [2].

NOTE: Install the lower two grommets first.

- 6 Connect the system fan cable to the connector on the system board [3].



- 7 Route the intrusion switch cable through the fan grommet [2].
- 8 Insert the intrusion switch cable into the system board [1].



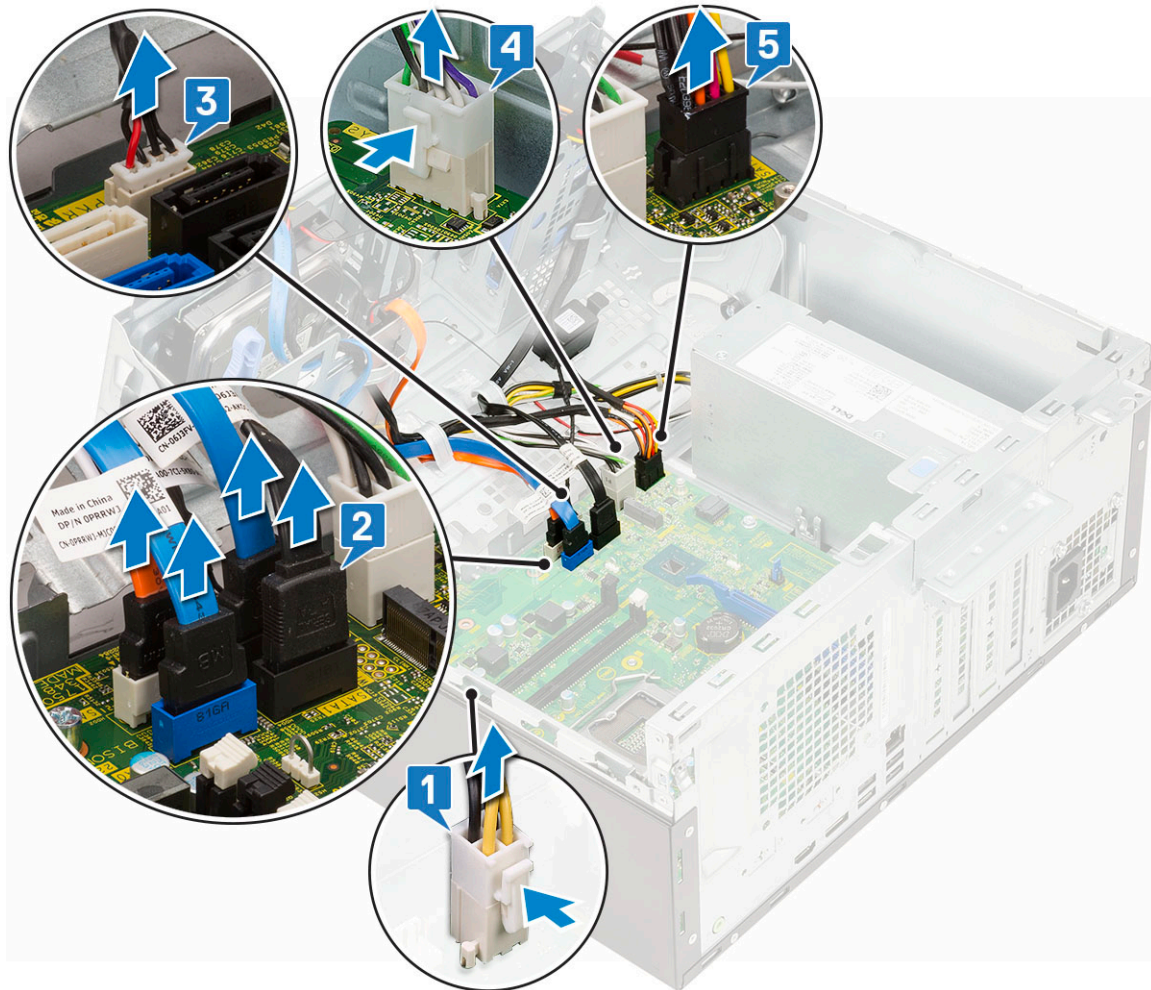
- 9 Close the [front panel door](#).
- 10 Install the:
 - a [Intrusion switch](#)
 - b [Front bezel](#)
 - c [Side cover](#)
- 11 Follow the procedure in [After working inside your computer](#).

System board

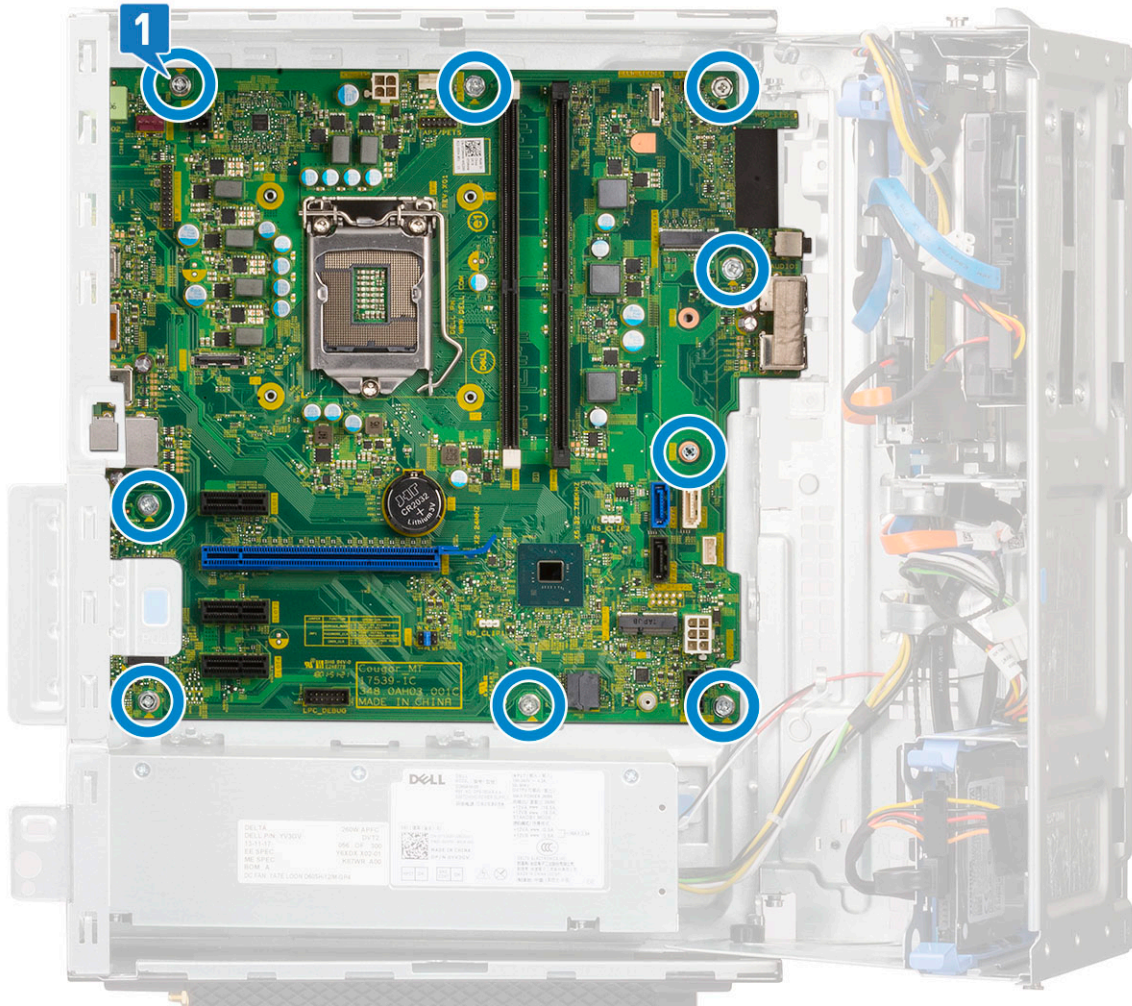
Removing system board

- 1 Follow the procedure in [Before working inside your computer](#).
- 2 Remove the:
 - a [Side cover](#)
 - b [Front bezel](#)
- 3 Open the [front panel door](#).
- 4 Remove the:
 - a [Heatsink fan](#)
 - b [Heatsink](#)
 - c [Processor](#)
 - d [Expansion card](#)
 - e [PCIe SSD](#)
 - f [SD card reader](#)
 - g [Memory module](#)

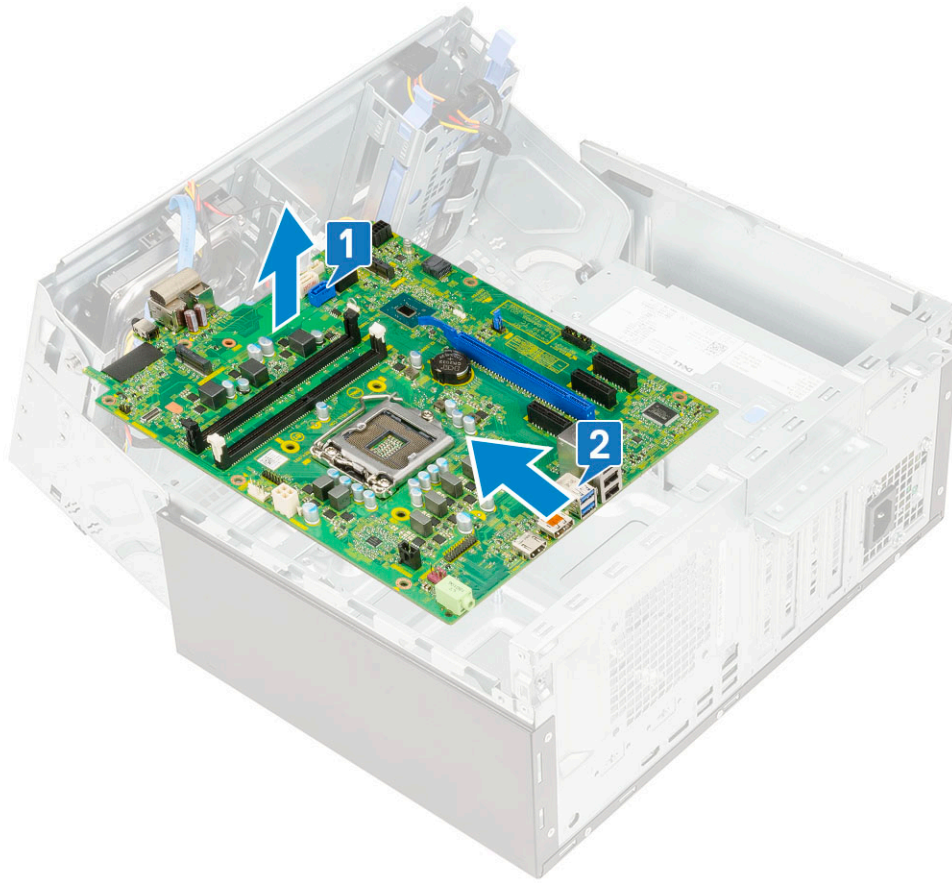
- 5 Disconnect the following cables from the system board:
- a CPU power [1]
 - b Hard drive data and optical drive data [2]
 - c Speaker [3]
 - d System power [4]
 - e SATA [5]



- 6 To remove the system board:
- a Remove the screws that secure the system board to the computer [1].

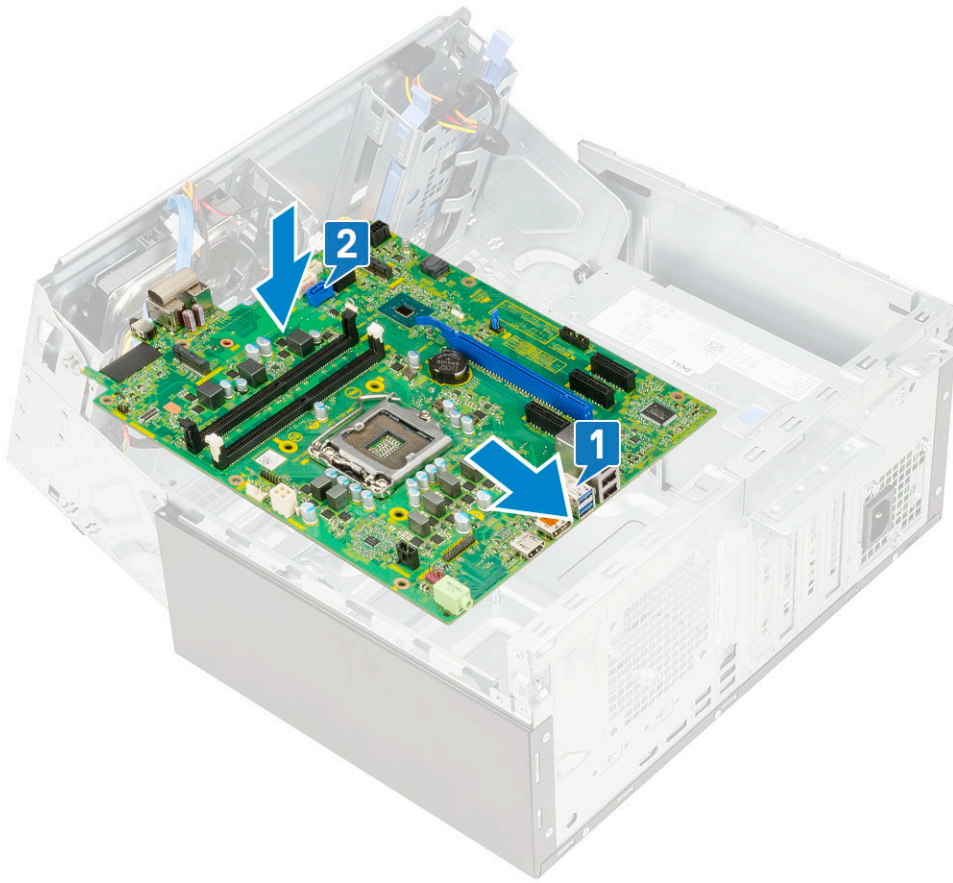


b Slide and lift the system board away from the computer [1, 2].

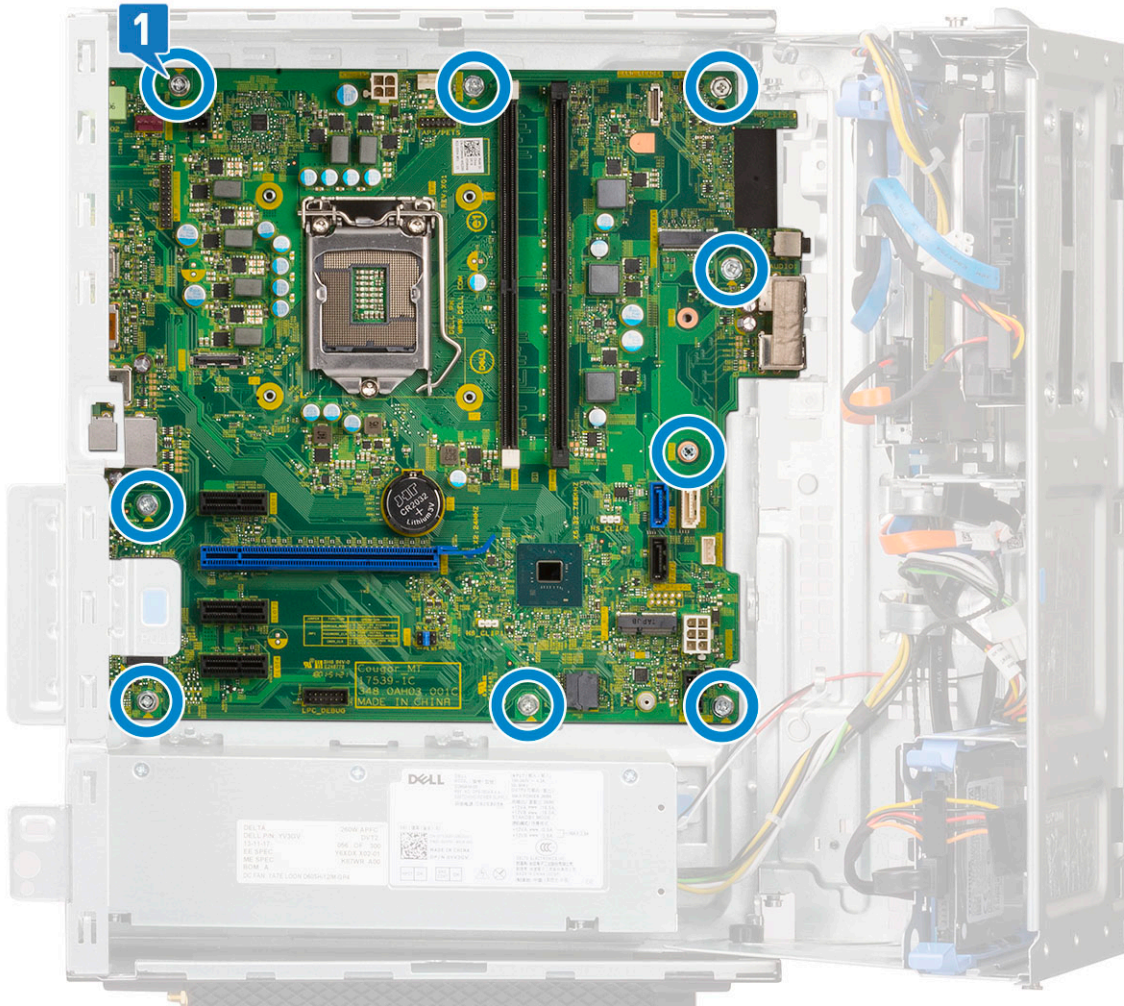


Installing the system board

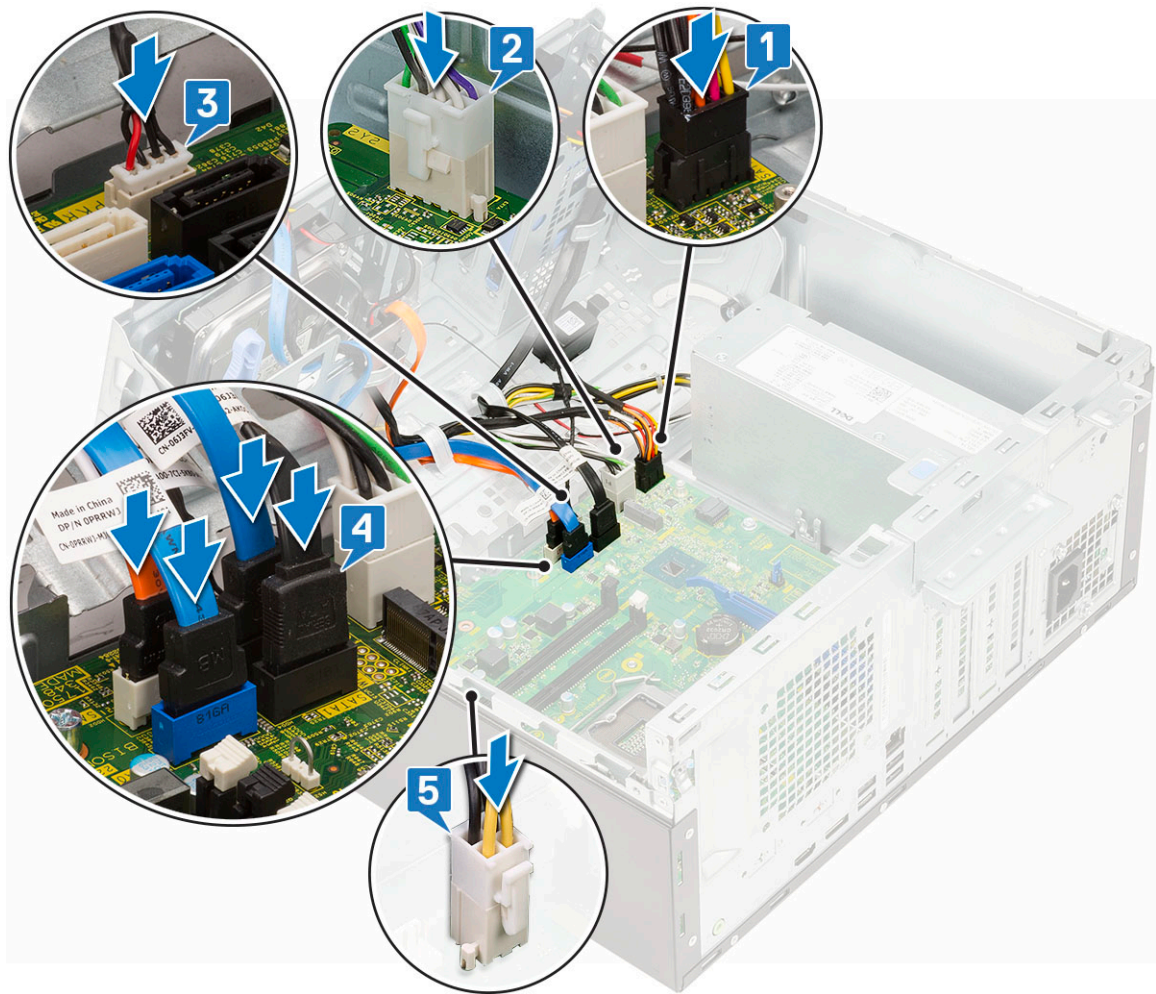
- 1 Hold the system board by its edges and align it towards the back of the computer.
- 2 Lower the system board into the computer until the connectors at the back of the system board align with the slots on the chassis, and the screw holes on the system board align with the standoffs on the computer [1, 2].



- 3 Replace the screws to secure the system board to the computer [1].



- 4 Route all the cables through the routing clips.
- 5 Align the cables with the pins on connectors on the system board and connect the following cables to the system board:
 - a SATA [1]
 - b System power [2]
 - c Speaker [3]
 - d Hard drive data and optical drive data [4]
 - e CPU power [5]



- 6 Install the:
 - a [Memory module](#)
 - b [PCIe SSD](#)
 - c [Expansion cards](#)
 - d [SD card reader](#)
 - e [Processor](#)
 - f [Heatsink](#)
 - g [Heatsink fan](#)
- 7 Close the [front panel door](#)
- 8 Install the:
 - a [Front bezel](#)
 - b [Side cover](#)
- 9 Follow the procedure in [After working inside your computer](#).

Troubleshooting

Enhanced Pre-Boot System Assessment — ePSA diagnostics

The ePSA diagnostics (also known as system diagnostics) performs a complete check of your hardware. The ePSA is embedded with the BIOS and is launched by the BIOS internally. The embedded system diagnostics provides a set of options for particular devices or device groups allowing you to:

- Run tests automatically or in an interactive mode
- Repeat tests
- Display or save test results
- Run thorough tests to introduce additional test options to provide extra information about the failed device(s)
- View status messages that inform you if tests are completed successfully
- View error messages that inform you of problems encountered during testing

⚠ CAUTION: Use the system diagnostics to test only your computer. Using this program with other computers may cause invalid results or error messages.

ⓘ NOTE: Some tests for specific devices require user interaction. Always ensure that you are present at the computer terminal when the diagnostic tests are performed.

Running the ePSA Diagnostics

- 1 Invoke diagnostics boot by either of the methods suggested above
- 2 Once on one time boot menu use up/down arrow key to navigate to ePSA or diagnostics and press <return> key to launch
Fn+PWR will flash diagnostics boot selected on screen and launch ePSA/diagnostics directly.
- 3 On the boot menu screen, select the **Diagnostics** option.
- 4 Press the arrow in the lower-right corner to go to the page listing.
The items detected are listed and will be tested
- 5 If there are any issues, error codes are displayed.
Note the error code and validation number and contact Dell.

To run a diagnostic test on a specific device

- 1 Press Esc and click **Yes** to stop the diagnostic test.
- 2 Select the device from the left pane and click **Run Tests**.
- 3 If there are any issues, error codes are displayed.
Note the error code and validation number and contact Dell.

Diagnostics

The computer POST (Power On Self Test) ensures that it meets the basic computer requirements and the hardware is working appropriately before the boot process begins. If the computer passes the POST, the computer continues to start in a normal mode.

However, if the computer fails the POST, the computer emits a series of LED codes during the start-up. The system LED is integrated on the Power button.

The following table shows different light patterns and what they indicate.

Table 3. Power LED summary

Amber LED state	White LED state	System state	Notes
Off	Off	S5	
Off	Blinking	S3, no PWRGD_PS	
Previous State	Previous State	S3, no PWRGD_PS	This entry provides for the possibility of a delay from SLP_S3# active to PWRGD_PS inactive.
Blinking	Off	S0, no PWRGD_PS	
Steady	Off	S0, no PWRGD_PS, Code fetch = 0	
Off	Steady	S0, no PWRGD_PS, Code fetch = 1	This indicates that the host BIOS has started to execute and the LED register is now writable.

Table 4. Amber LED blinking failures

Amber LED state	White LED state	System state	Notes
2	1	Bad MBD	Bad MBD - Rows A, G, H, and J from table 12.4 of SIO Spec - Pre-Post indicators [40]
2	2	Bad MB, PSU or cabling	Bad MBD, PSU or PSU cabling - Rows B, C and D of table 12.4 SIO spec [40]
2	3	Bad MBD, DIMMS, or CPU	Bad MBD, DIMMS or CPU - Rows F and K from table 12.4 of SIO spec [40]
2	4	Bad coin cell	Bad coin cell - Row M of table 12.4 in SIO spec [40]

Table 5. States Under Host BIOS Control

Amber LED state	White LED state	System state	Notes
2	5	BIOS state 1	BIOS Post code (Old LED pattern 0001) Corrupt BIOS.
2	6	BIOS state 2	BIOS Post code (Old LED pattern 0010) CPU config or CPU failure.
2	7	BIOS state 3	BIOS Post code (Old LED pattern 0011) MEM config in process. Appropriate mem modules detected but failure has occurred.
3	1	BIOS state 4	BIOS Post code (Old LED pattern 0100) Combine PCI device config or failure with

Amber LED state	White LED state	System state	Notes
3	2	BIOS state 5	video sub sytem config or failure. BIOS to eliminate 0101 video code.
3	3	BIOS state 6	BIOS Post code (Old LED pattern 0110) Combine storage and USB config or failure. BIOS to eliminate 0111 USB code.
3	4	BIOS state 7	BIOS Post code (Old LED pattern 1000) MEM config, no memory detected.
3	5	BIOS state 8	BIOS Post code (Old LED pattern 1001) Fatal Motherboard error.
3	6	BIOS state 9	BIOS Post code (Old LED pattern 1010) Mem config, modules incompatible or invalid config.
3	7	BIOS state 10	BIOS Post code (Old LED pattern 1011) combine "Other pre-video activity and resource configuration codes. BIOS to eliminate 1100 code.
3			BIOS Post code (Old LED pattern 1110) Other pre-post activity, routine subsequent to video init.

Diagnostic error messages

Table 6. Diagnostic error messages

Error messages	Description
AUXILIARY DEVICE FAILURE	The touchpad or external mouse may be faulty. For an external mouse, check the cable connection. Enable the Pointing Device option in the System Setup program.
BAD COMMAND OR FILE NAME	Ensure that you have spelled the command correctly, put spaces in the proper place, and used the correct path name.
CACHE DISABLED DUE TO FAILURE	The primary cache internal to the microprocessor has failed. Contact Dell
CD DRIVE CONTROLLER FAILURE	The optical drive does not respond to commands from the computer.
DATA ERROR	The hard drive cannot read the data.
DECREASING AVAILABLE MEMORY	One or more memory modules may be faulty or improperly seated. Reinstall the memory modules or, if necessary, replace them.
DISK C: FAILED INITIALIZATION	The hard drive failed initialization. Run the hard drive tests in Dell Diagnostics .
DRIVE NOT READY	The operation requires a hard drive in the bay before it can continue. Install a hard drive in the hard drive bay.

Error messages

	Description
ERROR READING PCMCIA CARD	The computer cannot identify the ExpressCard. Reinsert the card or try another card.
EXTENDED MEMORY SIZE HAS CHANGED	The amount of memory recorded in non-volatile memory (NVRAM) does not match the memory module installed in the computer. Restart the computer. If the error appears again, Contact Dell
THE FILE BEING COPIED IS TOO LARGE FOR THE DESTINATION DRIVE	The file that you are trying to copy is too large to fit on the disk, or the disk is full. Try copying the file to a different disk or use a larger capacity disk.
A FILENAME CANNOT CONTAIN ANY OF THE FOLLOWING CHARACTERS: \ / : * ? " < > -	Do not use these characters in filenames.
GATE A20 FAILURE	A memory module may be loose. Reinstall the memory module or, if necessary, replace it.
GENERAL FAILURE	The operating system is unable to carry out the command. The message is usually followed by specific information. For example, <i>Printer out of paper</i> . Take the appropriate action.
HARD-DISK DRIVE CONFIGURATION ERROR	The computer cannot identify the drive type. Shut down the computer, remove the hard drive, and boot the computer from an optical drive. Then, shut down the computer, reinstall the hard drive, and restart the computer. Run the Hard Disk Drive tests in Dell Diagnostics .
HARD-DISK DRIVE CONTROLLER FAILURE 0	The hard drive does not respond to commands from the computer. Shut down the computer, remove the hard drive, and boot the computer from an optical drive. Then, shut down the computer, reinstall the hard drive, and restart the computer. If the problem persists, try another drive. Run the Hard Disk Drive tests in Dell Diagnostics .
HARD-DISK DRIVE FAILURE	The hard drive does not respond to commands from the computer. Shut down the computer, remove the hard drive, and boot the computer from an optical drive. Then, shut down the computer, reinstall the hard drive, and restart the computer. If the problem persists, try another drive. Run the Hard Disk Drive tests in Dell Diagnostics .
HARD-DISK DRIVE READ FAILURE	The hard drive may be defective. Shut down the computer, remove the hard drive, and boot the computer from an optical. Then, shut down the computer, reinstall the hard drive, and restart the computer. If the problem persists, try another drive. Run the Hard Disk Drive tests in Dell Diagnostics .
INSERT BOOTABLE MEDIA	The operating system is trying to boot to non-bootable media, such as an optical drive. Insert bootable media.
INVALID CONFIGURATION INFORMATION-PLEASE RUN SYSTEM SETUP PROGRAM	The system configuration information does not match the hardware configuration. The message is most likely to occur after a memory module is installed. Correct the appropriate options in the system setup program.
KEYBOARD CLOCK LINE FAILURE	For external keyboards, check the cable connection. Run the Keyboard Controller test in Dell Diagnostics .

Error messages

Error messages	Description
KEYBOARD CONTROLLER FAILURE	For external keyboards, check the cable connection. Restart the computer, and avoid touching the keyboard or the mouse during the boot routine. Run the Keyboard Controller test in Dell Diagnostics .
KEYBOARD DATA LINE FAILURE	For external keyboards, check the cable connection. Run the Keyboard Controller test in Dell Diagnostics .
KEYBOARD STUCK KEY FAILURE	For external keyboards or keypads, check the cable connection. Restart the computer, and avoid touching the keyboard or keys during the boot routine. Run the Stuck Key test in Dell Diagnostics .
LICENSED CONTENT IS NOT ACCESSIBLE IN MEDIADIRECT	Dell MediaDirect cannot verify the Digital Rights Management (DRM) restrictions on the file, so the file cannot be played.
MEMORY ADDRESS LINE FAILURE AT ADDRESS, READ VALUE EXPECTING VALUE	A memory module may be faulty or improperly seated. Reinstall the memory module or, if necessary, replace it.
MEMORY ALLOCATION ERROR	The software you are attempting to run is conflicting with the operating system, another program, or a utility. Shut down the computer, wait for 30 seconds, and then restart it. Run the program again. If the error message still appears, see the software documentation.
MEMORY DOUBLE WORD LOGIC FAILURE AT ADDRESS, READ VALUE EXPECTING VALUE	A memory module may be faulty or improperly seated. Reinstall the memory module or, if necessary, replace it.
MEMORY ODD/EVEN LOGIC FAILURE AT ADDRESS, READ VALUE EXPECTING VALUE	A memory module may be faulty or improperly seated. Reinstall the memory module or, if necessary, replace it.
MEMORY WRITE/READ FAILURE AT ADDRESS, READ VALUE EXPECTING VALUE	A memory module may be faulty or improperly seated. Reinstall the memory module or, if necessary, replace it.
NO BOOT DEVICE AVAILABLE	The computer cannot find the hard drive. If the hard drive is your boot device, ensure that the drive is installed, properly seated, and partitioned as a boot device.
NO BOOT SECTOR ON HARD DRIVE	The operating system may be corrupted. Contact Dell.
NO TIMER TICK INTERRUPT	A chip on the system board may be malfunctioning. Run the System Set tests in Dell Diagnostics .
NOT ENOUGH MEMORY OR RESOURCES. EXIT SOME PROGRAMS AND TRY AGAIN	You have too many programs open. Close all windows and open the program that you want to use.
OPERATING SYSTEM NOT FOUND	Reinstall the operating system. If the problem persists, Contact Dell.
OPTIONAL ROM BAD CHECKSUM SECTOR NOT FOUND	The optional ROM has failed. Contact Dell. The operating system cannot locate a sector on the hard drive. You may have a defective sector or corrupted File Allocation Table (FAT) on the hard drive. Run the Windows error-checking utility to check the file structure on the hard drive. See Windows Help and Support for instructions (click Start > Help and Support). If a large number of sectors are defective, back up the data (if possible), and then format the hard drive.
SEEK ERROR	The operating system cannot find a specific track on the hard drive.
SHUTDOWN FAILURE	A chip on the system board may be malfunctioning. Run the System Set tests in Dell Diagnostics . If the message reappears, Contact Dell.

Error messages	Description
TIME-OF-DAY CLOCK LOST POWER	System configuration settings are corrupted. Connect your computer to an electrical outlet to charge the battery. If the problem persists, try to restore the data by entering the System Setup program, then immediately exit the program. If the message reappears, Contact Dell .
TIME-OF-DAY CLOCK STOPPED	The reserve battery that supports the system configuration settings may require recharging. Connect your computer to an electrical outlet to charge the battery. If the problem persists, Contact Dell .
TIME-OF-DAY NOT SET-PLEASE RUN THE SYSTEM SETUP PROGRAM	The time or date stored in the system setup program does not match the system clock. Correct the settings for the Date and Time options.
TIMER CHIP COUNTER 2 FAILED	A chip on the system board may be malfunctioning. Run the System Set tests in Dell Diagnostics .
UNEXPECTED INTERRUPT IN PROTECTED MODE	The keyboard controller may be malfunctioning, or a memory module may be loose. Run the System Memory tests and the Keyboard Controller test in Dell Diagnostics or Contact Dell .
X:\ IS NOT ACCESSIBLE. THE DEVICE IS NOT READY	Insert a disk into the drive and try again.

System error messages

Table 7. System error messages

System message	Description
Alert! Previous attempts at booting this system have failed at checkpoint [nnnn]. For help in resolving this problem, please note this checkpoint and contact Dell Technical Support	The computer failed to complete the boot routine three consecutive times for the same error.
CMOS checksum error	RTC is reset, BIOS Setup default has been loaded.
CPU fan failure	CPU fan has failed.
System fan failure	System fan has failed.
Hard-disk drive failure	Possible hard disk drive failure during POST.
Keyboard failure	Keyboard failure or loose cable. If reseating the cable does not solve the problem, replace the keyboard.
No boot device available	No bootable partition on hard disk drive, the hard disk drive cable is loose, or no bootable device exists. <ul style="list-style-type: none"> If the hard drive is your boot device, ensure that the cables are connected and that the drive is installed properly and partitioned as a boot device. Enter system setup and ensure that the boot sequence information is correct.
No timer tick interrupt	A chip on the system board might be malfunctioning or motherboard failure.
NOTICE - Hard Drive SELF MONITORING SYSTEM has reported that a parameter has exceeded its normal operating range. Dell recommends that you back up your data regularly. A parameter	S.M.A.R.T error, possible hard disk drive failure.

System message**Description**

out of range may or may not indicate a
potential hard drive problem

Getting help

Contacting Dell

NOTE: If you do not have an active Internet connection, you can find contact information on your purchase invoice, packing slip, bill, or Dell product catalog.

Dell provides several online and telephone-based support and service options. Availability varies by country and product, and some services may not be available in your area. To contact Dell for sales, technical support, or customer service issues:

- 1 Go to **Dell.com/support**.
- 2 Select your support category.
- 3 Verify your country or region in the **Choose a Country/Region** drop-down list at the bottom of the page.
- 4 Select the appropriate service or support link based on your need.