

lenovo

***Lenovo G50-30/G50-45/
G50-70/G50-70m/Z50-70/
Z50-75/G50-80***

***Hardware
Maintenance
Manual***

Notes:

- Before using this information and the product it supports, be sure to read the general information under “Notices” on page 91.
- This manual applies to the following models: Lenovo G50-30/G50-45/G50-70/G50-70m/Z50-70/Z50-75/G50-80. The illustrations used in this manual are for Lenovo G50-70 unless otherwise stated.

First Edition (Oct. 2014)

© Copyright Lenovo 2014. All rights reserved.

LIMITED AND RESTRICTED RIGHTS NOTICE: If data or software is delivered pursuant a General Services Administration “GSA” contract, use, reproduction, or disclosure is subject to restrictions set forth in Contract No. GS-35F-05925.

© 2014 Lenovo

Contents

About this manual	iv	1050 PCI Express Mini Card for wireless LAN	39
Safety information	1	1060 DIMM	41
General safety	2	1070 Fan assembly	42
Electrical safety	3	1080 Keyboard	44
Safety inspection guide	5	1090 Keyboard bezel	47
Handling devices that are sensitive to electrostatic discharge	6	1100 ODD board and USB&audio board	50
Grounding requirements	6	1110 System board	54
Safety notices: multilingual translations	7	1120 Heat sink assembly	57
Laser compliance statement	14	1130 Speakers and DC-in cable	58
Important service information	16	1140 LCD unit	60
Strategy for replacing FRUs	16	1150 LCD front bezel, LCD panel, and hinges	62
Strategy for replacing a hard disk drive	17	1160 Camera	65
Important notice for replacing a system board	17	1170 LCD cable and antenna assembly	67
Important information about replacing RoHS compliant FRUs	18	Locations	68
Front view and right-side view		Bottom and Left-side view	68
Bottom and Left-side view		Parts list	69
General checkout	19	Overall	70
What to do first	20	LCD FRUs	71
Power system checkout	21	Keyboard	82
Checking the AC adapter	21	Miscellaneous parts	84
Checking operational charging	21	AC adapters	86
Checking the battery pack	22	Screws	87
Power cords		Power cords	88
Related service information	23	Notices	91
Restoring the factory contents by using OneKey Recovery	23	Trademarks	92
Restore of factory default	23		
Passwords	24		
Power-on password	24		
Hard-disk password	24		
Administrator password	24		
Power management	25		
Screen blank state	25		
Putting the computer to sleep or shutting it down	25		
Putting your computer to sleep	25		
Shutting down the computer	25		
Lenovo G50-30/G50-45/G50-70/G50-70m/Z50-70/Z50-75/G50-80	26		
Specifications	26		
Status indicators	29		
Hotkeys	30		
FRU replacement notices	31		
Screw notices	31		
Removing and replacing an FRU	32		
1010 Battery pack	33		
1020 Base cover	34		
1030 Optical drive	36		
1040 Hard disk drive	37		

About this manual

This manual contains service and reference information for the following Lenovo product:

Lenovo G50-30/G50-45/G50-70/G50-70m/Z50-70/Z50-75/G50-80

Use this manual to troubleshoot problems.

The manual is divided into the following sections:

- The common sections provide general information, guidelines, and safety information required for servicing computers.
- The product-specific section includes service, reference, and product-specific parts information.

Important:

This manual is intended only for trained servicers who are familiar with Lenovo products. Use this manual to troubleshoot problems effectively.

Before servicing a Lenovo product, make sure to read all the information under “Safety information” on page 1 and “Important service information” on page 16.

Safety information

This chapter presents the following safety information that you need to get familiar with before you service a Lenovo G50-30/G50-45/G50-70/G50-70m/Z50-70/Z50-75/G50-80 computer:

- “General safety” on page 2
- “Electrical safety” on page 3
- “Safety inspection guide” on page 5
- “Handling devices that are sensitive to electrostatic discharge” on page 6
- “Grounding requirements” on page 6
- “Safety notices: multilingual translations” on page 7
- “Laser compliance statement” on page 14

General safety

Follow these rules below to ensure general safety:

- Observe a good housekeeping in the area where the machines are put during and after the maintenance.
- When lifting any heavy object:
 1. Make sure that you can stand safely without slipping.
 2. Distribute the weight of the object equally between your feet.
 3. Use a slow lifting force. Never move suddenly or twist when you attempt to lift it.
 4. Lift it by standing or pushing up with your leg muscles; this action could avoid the strain from the muscles in your back. Do not attempt to lift any object that weighs more than 16 kg (35 lb) or that you think is too heavy for you.
- Do not perform any action that causes hazards to the customer, or that makes the machine unsafe.
- Before you start the machine, make sure that other service representatives and the customer are not in a hazardous position.
- Please remove covers and other parts in a safe place, away from all personnel, while you are servicing the machine.
- Keep your toolcase away from walk areas so that other people will not trip over it.
- Do not wear loose clothing that can be trapped in the moving parts of the machine. Make sure that your sleeves are fastened or rolled up above your elbows. If your hair is long, fasten it.
- Insert the ends of your necktie or scarf inside clothing or fasten it with the nonconductive clip, about 8 centimeters (3 inches) from the end.
- Do not wear jewelry, chains, metal-frame eyeglasses, or metal fasteners for your clothing.

Attention: Metal objects are good electrical conductors.
- Wear safety glasses when you are hammering, drilling, soldering, cutting wire, attaching springs, using solvents, or working in any other conditions that may be hazardous to your eyes.
- After service, reinstall all safety shields, guards, labels, and ground wires. Replace any safety device that is worn or defective.
- Reinstall all covers correctly before returning the machine to the customer.
- Fan louvers on the machine help to prevent the overheating of internal components. Do not obstruct fan louvers or cover them with labels or stickers.

Electrical safety

Observe the following rules when working on electrical equipments.

Important:

Use only approved tools and test equipments. Some hand tools have handles covered with a soft material that does not insulate you when working with live electrical currents.

Many customers have rubber floor mats near their machines that contain small conductive fibers to decrease electrostatic discharges. Do not use such kind of mat to protect yourself from electrical shock.

- Find the room emergency power-off (EPO) switch, disconnecting switch or electrical outlet. If an electrical accident occurs, you can then operate the switch or unplug the power cord quickly.
- Do not work alone under hazardous conditions or near the equipment that has hazardous voltages.
- Disconnect all power before:
 - Performing a mechanical inspection
 - Working near power supplies
 - Removing or installing main units
- Before you start to work on the machine, unplug the power cord. If you cannot unplug it, ask the customer to power-off the wall box that supplies power to the machine, and to lock the wall box in the off position.
- If you need to work on a machine that has exposed electrical circuits, observe the following precautions:
 - Ensure that another person, familiar with the power-off controls, is near you.

Attention: Another person must be there to switch off the power, if necessary.
 - Use only one hand when working with powered-on electrical equipment; keep the other hand in your pocket or behind your back.

Attention: An electrical shock can occur only when there is a complete circuit. By observing the above rule, you may prevent a current from passing through your body.
 - When using testers, set the controls correctly and use the approved probe leads and accessories for that tester.
 - Stand on suitable rubber mats (obtained locally, if necessary) to insulate you from grounds such as metal floor strips and machine frames.

Observe the special safety precautions when you work with very high voltages; instructions for these precautions are in the safety sections of maintenance information. Be extremely careful when you measure the high voltages.

- Regularly inspect and maintain your electrical hand tools for safe operational condition.
- Do not use worn or broken tools and testers.
- Never assume that power has been disconnected from a circuit. First, check it to make sure that it has been powered off.

- Always look carefully for possible hazards in your work area. Examples of these hazards are moist floors, nongrounded power extension cables, power surges, and missing safety grounds.
- Do not touch live electrical circuits with the reflective surface of a plastic dental mirror. The surface is conductive; such touching can cause personal injury and machine damage.
- Do not service the following parts with the power on when they are removed from their normal operating places in a machine:
 - Power supply units
 - Pumps
 - Blowers and fans
 - Motor generatorsand similar units. (This practice ensures correct grounding of the units.)
- If an electrical accident occurs:
 - Caution: do not become a victim yourself.
 - Switch off the power.
 - Send the victim to get medical aid.

Safety inspection guide

The purpose of this inspection guide is to assist you in identifying potential unsafe conditions. As each machine was designed and built, required safety items were installed to protect users and service personnel from injury. This guide addresses only those items. You should use good judgment to identify potential safety hazards according to the attachment of non-Lenovo features or options not covered by this inspection guide.

If any unsafe conditions are present, you must determine how serious the apparent hazard could be and whether you can continue without first correcting the problem.

Consider these conditions and the safety hazards they present:

- Electrical hazards, especially primary power (primary voltage on the frame can cause serious or fatal electrical shock)
- Explosive hazards, such as a damaged CRT face or a bulging capacitor
- Mechanical hazards, such as loose or missing hardware

To determine whether there are any potential unsafe conditions, use the following checklist at the beginning of every service task. Begin the checks with the power off, and the power cord disconnected.

Checklist:

1. Check exterior covers for damage (loose, broken, or sharp edges).
2. Turn off the computer. Disconnect the power cord.
3. Check the power cord for:
 - a. A third-wire ground connector in good condition. Use a meter to measure third-wire ground continuity for 0.1 ohm or less between the external ground pin and the frame ground.
 - b. The power cord should be the type specified in the parts list.
 - c. Insulation must not be frayed or worn.
4. Check for cracked or bulging batteries.
5. Remove the cover.
6. Check for any obvious non-Lenovo alterations. Use good judgment as to the safety of any non-Lenovo alterations.
7. Check inside the unit for any obvious unsafe conditions, such as metal filings, contamination, water or other liquids, or signs of fire or smoke damage.
8. Check for worn, frayed, or pinched cables.
9. Check that the power-supply cover fasteners (screws or rivets) have not been removed or tampered with.

Handling devices that are sensitive to electrostatic discharge

Any computer part containing transistors or integrated circuits (ICs) should be considered sensitive to electrostatic discharge (ESD). ESD damage can occur when there is a difference in charge between objects. Protect against ESD damage by equalizing the charge so that the machine, the part, the work mat, and the person handling the part are all at the same charge.

Notes:

1. Use product-specific ESD procedures when they exceed the requirements noted here.
2. Make sure that the ESD protective devices you use have been certified (ISO 9000) as fully effective.

When handling ESD-sensitive parts:

- Keep the parts in protective packages until they are inserted into the product.
- Avoid contact with other people.
- Wear a grounded wrist strap against your skin to eliminate static on your body.
- Prevent the part from touching your clothing. Most clothing is insulative and retains a charge even when you are wearing a wrist strap.
- Use the black side of a grounded work mat to provide a static-free work surface. The mat is especially useful when handling ESD-sensitive devices.
- Select a grounding system, such as those listed below, to provide protection that meets the specific service requirement.

Note:

The use of a grounding system to guard against ESD damage is desirable but not necessary.

- Attach the ESD ground clip to any frame ground, ground braid, or green-wire ground.
- When working on a double-insulated or battery-operated system, use an ESD common ground or reference point. You can use coax or connector-outside shells on these systems.
- Use the round ground prong of the ac plug on ac-operated computers.

Grounding requirements

Electrical grounding of the computer is required for operator safety and correct system function. Proper grounding of the electrical outlet can be verified by a certified electrician.

Safety notices: multilingual translations

The safety notices in this section are provided in English, French, German, Hebrew, Italian, Japanese, and Spanish.

Safety notice 1

Before the computer is powered on after FRU replacement, make sure all screws, springs, and other small parts are in place and are not left loose inside the computer. Verify this by shaking the computer and listening for rattling sounds. Metallic parts or metal flakes can cause electrical shorts.

Avant de remettre l'ordinateur sous tension après remplacement d'une unité en clientèle, vérifiez que tous les ressorts, vis et autres pièces sont bien en place et bien fixées. Pour ce faire, secouez l'unité et assurez-vous qu'aucun bruit suspect ne se produit. Des pièces métalliques ou des copeaux de métal pourraient causer un court-circuit.

Bevor nach einem FRU-Austausch der Computer wieder angeschlossen wird, muß sichergestellt werden, daß keine Schrauben, Federn oder andere Kleinteile fehlen oder im Gehäuse vergessen wurden. Der Computer muß geschüttelt und auf Klappergeräusche geprüft werden. Metallteile oder-splitter können Kurzschlüsse erzeugen.

לפני הפעלת המחשב לאחר החלפת FRU יש לוודא שכל הברגים, הקפיצים, וחלקים קטנים אחרים נמצאים במקומם ואינם חופשיים לזוז בתוך המחשב. כדי לוודא זאת, יש ללטלט את המחשב ולהקשיב לגילוי קולות שקשוק. חלקי או שבבי מתכת עלולים לגרום לקצרים חשמליים.

Prima di accendere l'elaboratore dopo che é stata effettuata la sostituzione di una FRU, accertarsi che tutte le viti, le molle e tutte le altri parti di piccole dimensioni siano nella corretta posizione e non siano sparse all'interno dell'elaboratore. Verificare ciò scuotendo l'elaboratore e prestando attenzione ad eventuali rumori; eventuali parti o pezzetti metallici possono provocare cortocircuiti pericolosi.

FRUの交換後、コンピュータの電源を入れる前に、ねじ、バネ、その他の小さな部品がすべて正しい位置にあり、またコンピュータの内部で緩んでいないことを確認してください。これを確認するには、コンピュータを振って、カチャカチャと音がしないか確かめます。金属部品や金属破片はショートの原因になることがあります。

Antes de encender el sistema despues de sustituir una FRU, compruebe que todos los tornillos, muelles y demás piezas pequeñas se encuentran en su sitio y no se encuentran sueltas dentro del sistema. Compruébelo agitando el sistema y escuchando los posibles ruidos que provocarían. Las piezas metálicas pueden causar cortocircuitos eléctricos.

Safety notice 2

⚠ DANGER

Some standby batteries contain a small amount of nickel and cadmium. Do not disassemble a standby battery, recharge it, throw it into fire or water, or short-circuit it. Dispose of the battery as required by local ordinances or regulations. Use only the battery in the appropriate parts listing. Use of an incorrect battery can result in ignition or explosion of the battery.

Certaines batteries de secours contiennent du nickel et du cadmium. Ne les démontez pas, ne les rechargez pas, ne les exposez ni au feu ni à l'eau. Ne les mettez pas en court-circuit. Pour les mettre au rebut, conformez-vous à la réglementation en vigueur. Lorsque vous remplacez la pile de sauvegarde ou celle de l'horloge temps réel, veillez à n'utiliser que les modèles cités dans la liste de pièces détachées adéquate. Une batterie ou une pile inappropriée risque de prendre feu ou d'exploser.

Die Bereitschaftsbatterie, die sich unter dem Diskettenlaufwerk befindet, kann geringe Mengen Nickel und Cadmium enthalten. Sie darf nicht zerlegt, wiederaufgeladen, kurzgeschlossen, oder Feuer oder Wasser ausgesetzt werden. Bei der Entsorgung die örtlichen Bestimmungen für Sondermüll beachten. Beim Ersetzen der Bereitschafts-oder Systembatterie nur Batterien des Typs verwenden, der in der Ersatzteilliste aufgeführt ist. Der Einsatz falscher Batterien kann zu Entzündung oder Explosion führen.

סוללות המתנה מסוימות מכילות כמות קטנה של ניקל וקדמיום. אין לפרק סוללת המתנה, לטעון אותה מחדש, להשליך אותה לנאש או למים או לקצר אותה. יש לשלוק את הסוללה בנדרש על ידי התקנות והחוקים המקומיים. יש להשתמש רק בסוללה המופיעה ברשימת החלקים המתאימה. שימוש בסוללה לא מתאימה עלול לגרום להצתה או התפוצצות של הסוללה.

Alcune batterie di riserva contengono una piccola quantità di nichel e cadmio. Non smontarle, ricaricarle, gettarle nel fuoco o nell'acqua né cortocircuitarle. Smaltirle secondo la normativa in vigore (DPR 915/82, successive disposizioni e disposizioni locali). Quando si sostituisce la batteria dell'RTC (real time clock) o la batteria di supporto, utilizzare soltanto i tipi inseriti nell'appropriato Catalogo parti. L'impiego di una batteria non adatta potrebbe determinare l'incendio o l'esplosione della batteria stessa.

予備バッテリーの中には少量のニッケルとカドミウムが含まれているものがあります。したがって、予備バッテリーの分解、再充電、火または水の中への投棄、またはショートさせることは決して行わないでください。バッテリーを廃棄する場合は地方自治体の条例に従ってください。適切なパーツ・リストにあるバッテリーだけを使用してください。誤ったバッテリーを使用すると、バッテリーが発火したり、爆発したりすることがあります。

Algunas baterías de reserva contienen una pequeña cantidad de níquel y cadmio. No las desmonte, ni recargue, ni las eche al fuego o al agua ni las cortocircuite. Deséchelas tal como dispone la normativa local. Utilice sólo baterías que se encuentren en la lista de piezas. La utilización de una batería no apropiada puede provocar la ignición o explosión de la misma.

Safety notice 3**⚠ DANGER**

The battery pack contains small amounts of nickel. Do not disassemble it, throw it into fire or water, or short-circuit it. Dispose of the battery pack as required by local ordinances or regulations. Use only the battery in the appropriate parts listing when replacing the battery pack. Use of an incorrect battery can result in ignition or explosion of the battery.

La batterie contient du nickel. Ne la démontez pas, ne l'exposez ni au feu ni à l'eau. Ne la mettez pas en court-circuit. Pour la mettre au rebut, conformez-vous à la réglementation en vigueur. Lorsque vous remplacez la batterie, veillez à n'utiliser que les modèles cités dans la liste de pièces détachées adéquate. En effet, une batterie inappropriée risque de prendre feu ou d'exploser.

Akkus enthalten geringe Mengen von Nickel. Sie dürfen nicht zerlegt, wiederaufgeladen, kurzgeschlossen, oder Feuer oder Wasser ausgesetzt werden. Bei der Entsorgung die örtlichen Bestimmungen für Sondermüll beachten. Beim Ersetzen der Batterie nur Batterien des Typs verwenden, der in der Ersatzteilliste aufgeführt ist. Der Einsatz falscher Batterien kann zu Entzündung oder Explosion führen.

מארו הסוללה מכיל כמויות קטנות של ניקל וקדמיום. אין לפרק את מארו הסוללה, להשליך אותו לאש או למים או לקצר אותו. יש לשלוק את מארו הסוללה כנדרש על ידי התקנות והחוקים המקומיים. יש להשתמש רק בסוללה המופיעה ברשימת החלקים המתאימה בזמן החלפת מארו הסוללה. שימוש בסוללה לא מתאימה עלול לגרום להצתה או התפוצצות של הסוללה.

La batteria contiene piccole quantità di nichel. Non smontarla, gettarla nel fuoco o nell'acqua né cortocircuitarla. Smaltirla secondo la normativa in vigore (DPR 915/82, successive disposizioni e disposizioni locali). Quando si sostituisce la batteria, utilizzare soltanto i tipi inseriti nell'appropriato Catalogo parti. L'impiego di una batteria non adatta potrebbe determinare l'incendio o l'esplosione della batteria stessa.

バッテリー・パックには少量のニッケルが含まれています。バッテリー・パックを分解したり、火または水の中に投げ込んだり、ショートさせないでください。バッテリー・パックの廃棄にあたっては、地方自治体の条例または規則に従ってください。バッテリー・パックを交換するときは、適切なパーツ・リストにあるバッテリーだけを使用してください。誤ったバッテリーを使用すると、バッテリーが発火したり、爆発したりすることがあります。

Las baterías contienen pequeñas cantidades de níquel. No las desmonte, ni recargue, ni las eche al fuego o al agua ni las cortocircuite. Deséchelas tal como dispone la normativa local. Utilice sólo baterías que se encuentren en la lista de piezas al sustituir la batería. La utilización de una batería no apropiada puede provocar la ignición o explosión de la misma.

Safety notice 4

⚠ DANGER

The lithium battery can cause a fire, an explosion, or a severe burn. Do not recharge it, remove its polarized connector, disassemble it, heat it above 100°C (212°F), incinerate it, or expose its cell contents to water. Dispose of the battery as required by local ordinances or regulations. Use only the battery in the appropriate parts listing. Use of an incorrect battery can result in ignition or explosion of the battery.

La pile de sauvegarde contient du lithium. Elle présente des risques d'incendie, d'explosion ou de brûlures graves. Ne la rechargez pas, ne retirez pas son connecteur polarisé et ne la démontez pas. Ne l'exposez pas à une température supérieure à 100°C, ne la faites pas brûler et n'en exposez pas le contenu à l'eau. Mettez la pile au rebut conformément à la réglementation en vigueur. Une pile inappropriée risque de prendre feu ou d'exploser.

Die Systematterie ist eine Lithiumatterie. Sie kann sich entzünden, explodieren oder schwere Verbrennungen hervorrufen. Batterien dieses Typs dürfen nicht aufgeladen, zerlegt, über 100 C erhitzt oder verbrannt werden. Auch darf ihr Inhalt nicht mit Wasser in Verbindung gebracht oder der zur richtigen Polung angebrachte Verbindungsstecker entfernt werden. Bei der Entsorgung die örtlichen Bestimmungen für Sondermüll beachten. Beim Ersetzen der Batterie nur Batterien des Typs verwenden, der in der Ersatzteilliste aufgeführt ist. Der Einsatz falscher Batterien kann zu Entzündung oder Explosion führen.

סוללת הליתיום עלולה לגרום לשריפה, להתפוצצות או לכוויות קשות. אין לטעון אותה מחדש, לטלוק את המחבר המקוטב שלה, לפרק אותה או לחמם אותה לטמפרטורה העולה על 100 מעלות צלזיוס. אין לשרוף את הסוללה ואין לחשוף את תוכן התא למים. יש לטלוק את הסוללה כנדרש בתקנות ובחוקים המקומיים. יש להשתמש רק בסוללה המומינה ברשימת החלקים המתאימים. שימוש בסוללה אחרת עלול לגרום לשכנת שריפה או התפוצצות.

La batteria di supporto e una batteria al litio e puo incendiarsi, esplodere o procurare gravi ustioni. Evitare di ricaricarla, smontarne il connettore polarizzato, smontarla, riscaldarla ad una temperatura superiore ai 100 gradi centigradi, incendiarla o gettarla in acqua. Smaltirla secondo la normativa in vigore (DPR 915/82, successive disposizioni e disposizioni locali). L'impiego di una batteria non adatta potrebbe determinare l'incendio o l'esplosione della batteria stessa.

リチウム・バッテリーは、火災、爆発、または重症のやけどを引き起こすことがあります。バックアップ・バッテリーの充電、その極性コネクタの取り外し、バッテリー本体の分解、100°C (212°F) 以上への加熱、焼却、電池の中身を水に浸すことはしないでください。バッテリーを廃棄する場合は地方自治体の条例に従ってください。適切なパーツ・リストにあるバッテリーだけを使用してください。誤ったバッテリーを使用すると、バッテリーが発火したり、爆発したりすることがあります。

La batería de repuesto es una batería de litio y puede provocar incendios, explosiones o quemaduras graves. No la recargue, ni quite el conector polarizado, ni la desmonte, ni caliente por encima de los 100°C (212°F), ni la incinere ni exponga el contenido de sus celdas al agua. Deséchela tal como dispone la normativa local.

Safety notice 5

If the LCD breaks and the fluid from inside the LCD gets into your eyes or on your hands, immediately wash the affected areas with water at least for 15 minutes. Seek medical care if any symptoms caused by the fluid are present after washing.

Si le panneau d'affichage à cristaux liquides se brise et que vous recevez dans les yeux ou sur les mains une partie du fluide, rincez-les abondamment pendant au moins quinze minutes. Consultez un médecin si des symptômes persistent après le lavage.

Die Leuchtstoffröhre im LCD-Bildschirm enthält Quecksilber. Bei der Entsorgung die örtlichen Bestimmungen für Sondermüll beachten. Der LCD-Bildschirm besteht aus Glas und kann zerbrechen, wenn er unsachgemäß behandelt wird oder der Computer auf den Boden fällt. Wenn der Bildschirm beschädigt ist und die darin befindliche Flüssigkeit in Kontakt mit Haut und Augen gerät, sollten die betroffenen Stellen mindestens 15 Minuten mit Wasser abgespült und bei Beschwerden anschließend ein Arzt aufgesucht werden.

אם מסך הנביש הנוזלי (LCD) נשבר והנוזל מתוך המסך בא במגע עם עיניים או ידיים, שטפו את האזורים הנוגעים מיד במים במשך 15 דקות לפחות. פנו לקבלת עזרה רפואית אם תסמינים הנובעים מהמגע עם הנוזל נמשכים לאחר השטיפה.

Nel caso che caso l'LCD si dovesse rompere ed il liquido in esso contenuto entrasse in contatto con gli occhi o le mani, lavare immediatamente le parti interessate con acqua corrente per almeno 15 minuti; poi consultare un medico se i sintomi dovessero permanere.

LCD が破損し、LCD 中の液体が目に入ったり、手に触れたりした場合は、液体が触れた部分を少なくとも 15 分間洗い流してください。洗い流した後に、液体によって何らかの症状が現れた場合は、医師の治療を受けてください。

Si la LCD se rompe y el fluido de su interior entra en contacto con sus ojos o sus manos, lave inmediatamente las áreas afectadas con agua durante 15 minutos como mínimo. Obtenga atención medica si se presenta algún sintoma del fluido despues de lavarse.

Safety notice 6

⚠ DANGER

To avoid shock, do not remove the plastic cover that protects the lower part of the inverter card.

Afin d'éviter tout risque de choc électrique, ne retirez pas le cache en plastique protégeant la partie inférieure de la carte d'alimentation.

Aus Sicherheitsgründen die Kunststoffabdeckung, die den unteren Teil der Spannungswandlerplatine umgibt, nicht entfernen.

כדי למנוע התחשמלות, אין להסיר את מכסה הפלסטיק המגן על חלקו התחתון של הכרטיס ההפוך.

Per evitare scosse elettriche, non rimuovere la copertura in plastica che avvolge la parte inferiore della scheda invertitore.

感電を防ぐため、インバーター・カードの下部を保護しているプラスチック・カバーを外さないでください。

Para evitar descargas, no quite la cubierta de plástico que rodea la parte baja de la tarjeta invertida.

Safety notice 7

⚠ DANGER

Though the main batteries have low voltage, a shorted or grounded battery can produce enough current to burn personnel or combustible materials.

Bien que le voltage des batteries principales soit peu élevé, le court-circuit ou la mise à la masse d'une batterie peut produire suffisamment de courant pour brûler des matériaux combustibles ou causer des brûlures corporelles graves.

Obwohl Hauptbatterien eine niedrige Spannung haben, können sie doch bei Kurzschluß oder Erdung genug Strom abgeben, um brennbare Materialien zu entzünden oder Verletzungen bei Personen hervorzurufen.

אף שהסוללות הראשיות הן בעלות מתח נמוך, סוללה מקוצרת או מוארזת עלולה להפיק זרם מספיק לגרימת כוויות או להצתת חומרים דליקים.

Sebbene le batterie di alimentazione siano a basso voltaggio, una batteria in corto circuito o a massa può fornire corrente sufficiente da bruciare materiali combustibili o provocare ustioni ai tecnici di manutenzione.

メイン・バッテリーの電圧は低くても、ショートしたり、接地したバッテリーが、作業者にやけどを負わせたり、可燃物を燃やすだけの電流を発生させる場合があります。

Aunque las baterías principales tienen un voltaje bajo, una batería cortocircuitada o con contacto a tierra puede producir la corriente suficiente como para quemar material combustible o provocar quemaduras en el personal.

Safety notice 8

⚠ DANGER

Before removing any FRU, turn off the computer, unplug all power cords from electrical outlets, remove the battery pack, and then disconnect any interconnecting cables.

Avant de retirer une unité remplaçable en clientèle, mettez le système hors tension, débranchez tous les cordons d'alimentation des socles de prise de courant, retirez la batterie et déconnectez tous les cordons d'interface.

Die Stromzufuhr muß abgeschaltet, alle Stromkabel aus der Steckdose gezogen, der Akku entfernt und alle Verbindungskabel abgenommen sein, bevor eine FRU entfernt wird.

לפני סילוק FRU כלשהו, יש לכבות את המחשב, לנתק את כל כבלי החשמל משקעי החשמל, להוציא את מטריז הסוללה, ואז לנתק כבלי חיבור אחרים אם יש כאלה.

Prima di rimuovere qualsiasi FRU, spegnere il sistema, scollegare dalle prese elettriche tutti i cavi di alimentazione, rimuovere la batteria e poi scollegare i cavi di interconnessione.

FRU を取り外す前に、**ThinkPad** の電源を切って、すべての電源コードをコンセントから外してください。次に、バッテリー・パックを外し、相互接続ケーブルを外してください。

Antes de quitar una FRU, apague el sistema, desenchufe todos los cables de las tomas de corriente eléctrica, quite la batería y, a continuación, desconecte cualquier cable de conexión entre dispositivos.

Laser compliance statement

Some models of Lenovo computer are equipped from the factory with an optical storage device such as a CD-ROM drive or a DVD-ROM drive. Such devices are also sold separately as options. If one of these drives is installed, it is certified in the U.S. to conform to the requirements of the Department of Health and Human Services 21 Code of Federal Regulations (DHHS 21 CFR) Subchapter J for Class 1 laser products. Elsewhere, the drive is certified to conform to the requirements of the International Electrotechnical Commission (IEC) 825 and CENELEC EN 60 825 for Class 1 laser products.

If a CD-ROM drive, a DVD-ROM drive, or another laser device is installed, note the following:

CAUTION

Use of controls or adjustments or performance of procedures other than those specified herein might result in hazardous radiation exposure.

O uso de controles, ajustes ou desempenho de procedimentos diferentes daqueles aqui especificados pode resultar em perigosa exposição à radiação.

凡未在这里指明的任何控制用法、调整、行为，都会导致严重后果。

Pour éviter tout risque d'exposition au rayon laser, respectez les consignes de réglage et d'utilisation des commandes, ainsi que les procédures décrites.

Werden Steuer- und Einstellelemente anders als hier festgesetzt verwendet, kann gefährliche Laserstrahlung auftreten.

Az itt előírt eljárásoktól, beállításoktól és vezérlésektől eltérni a lézersugárzás veszélye miatt kockázatos!

L'utilizzo di controlli, regolazioni o l'esecuzione di procedure diverse da quelle specificate possono provocare l'esposizione a.

Использование элементов настройки и выполнение процедур иных, чем указано здесь, может привести к опасному радиационному облучению.

Použitie kontrol, úprav alebo iných vykonaní od iných výrobcov, ako je v tomto špecifikované, mohlo by mať za následok nebezpečenstvo vystavenia sa vyžiarovaniu.

本書で指定された内容以外の、お客様による整備、調整、または手順を行った場合、レーザー光の放射の危険があります。

El uso de controles o ajustes o la ejecución de procedimientos distintos de los aquí especificados puede provocar la exposición a radiaciones peligrosas.

Opening the CD-ROM drive, the DVD-ROM drive, or any other optical storage device could result in exposure to hazardous laser radiation. There are no serviceable parts inside those drives. **Do not open.**

A CD-ROM drive, a DVD-ROM drive, or any other storage device installed may contain an embedded Class 3A or Class 3B laser diode. Note the following:

⚠ DANGER

Emits visible and invisible laser radiation when open. Do not stare into the beam, do not view directly with optical instruments, and avoid direct exposure to the beam.

Radiação por raio laser ao abrir. Não olhe fixo no feixe de luz, não olhe diretamente por meio de instrumentos óticos e evite exposição direta com o feixe de luz.

开启时会有激光发射时，请勿盯视激光光束，请勿直接查看视觉仪器，并且避免直接接触在激光光束之中。

Rayonnement laser si carter ouvert. Évitez de fixer le faisceau, de le regarder directement avec des instruments optiques, ou de vous exposer au rayon.

Laserstrahlung bei geöffnetem Gerät. Nicht direkt oder über optische Instrumente in den Laserstrahl sehen und den Strahlungsbereich meiden.

Kinyitáskor lézersugár ! Ne nézzen bele se szabad szemmel, se optikai eszközökkel. Kerülje a sugárnyalábbal való érintkezést!

Apriendo l'unità vengono emesse radiazioni laser. Non fissare il fascio, non guardarlo direttamente con strumenti ottici e evitare l'esposizione diretta al fascio.

Открывая, берегитесь лазерного излучения. Не смотрите на луч, не разглядывайте его с помощью оптических инструментов, а также избегайте прямого воздействия лазерного луча.

Keď je laserová jednotka otvorená. Vyhňte sa priamemu pohľadu a neľhajte priamo s optickými nástrojmi do lúča a vyhňte sa priamemu vystaveniu lúčov.

開けるとレーザー光が放射されます。光線を見つめたり、光学機械を使って直接見たりしないでください。

Radiación láser al abrir. No mire fijamente ni examine con instrumental óptico el haz de luz. Evite la exposición directa al haz.

Important service information

This chapter presents the following important service information:

- “Strategy for replacing FRUs” on page 16
 - “Strategy for replacing a hard disk drive” on page 17
 - “Important notice for replacing a system board” on page 17
- “Important information about replacing RoHS compliant FRUs” on page 18

Important:

BIOS and device driver fixes are customer-installable. The BIOS and device drivers are posted on the customer support site:

<http://support.lenovo.com>.

Strategy for replacing FRUs

Before replacing parts:

Make sure that all software fixes, drivers, and BIOS downloads are installed before replacing any FRUs listed in this manual.

After a system board is replaced, ensure that the latest BIOS is loaded to the system board before completing the service action.

To download software fixes, drivers, and BIOS, follow the steps below:

1. Go to <http://support.lenovo.com>.
2. Enter the serial number or select a product or use Lenovo smart downloading.
3. Select the BIOS/Driver/Applications and download.
4. Follow the directions on the screen and install the necessary software.

Use the following strategy to prevent unnecessary expense for replacing and servicing FRUs:

- If you are instructed to replace an FRU, but the replacement does not solve the problem, reinstall the original FRU before you continue.
- Some computers have both a processor board and a system board. If you are instructed to replace either of them, and replacing one of them does not solve the problem, reinstall that board, and then replace the other one.
- If an adapter or a device consists of more than one FRU, any of the FRUs may be the cause of the error. Before replacing the adapter or device, remove the FRUs one by one to see if the symptoms change. Replace only the FRU that changed the symptoms.

Attention: The setup configuration on the computer you are servicing may have been customized. Running Automatic Configuration may alter the settings. Note the current configuration settings (using the View Configuration option); then, when service has been completed, verify that those settings remain in effect.

Strategy for replacing a hard disk drive

Always try to run a low-level format before replacing a hard disk drive. This will cause all customer data on the hard disk to be lost. Make sure that the customer has a current backup of the data before performing this action.

Attention: The drive startup sequence in the computer you are servicing may have been changed. Be extremely careful during write operations such as copying, saving, or formatting. If you select an incorrect drive, data or programs can be overwritten.

Important notice for replacing a system board

Some components mounted on a system board are very sensitive. Improper handling can cause damage to those components, and may cause a system malfunction.

Attention: When handling a system board:

- Do not drop the system board or apply any excessive force to it.
- Avoid rough handling of any kind.
- Avoid bending the system board and hard pushing to prevent cracking at each BGA (Ball Grid Array) chipset.

Important information about replacing RoHS compliant FRUs

RoHS, The Restriction of Hazardous Substances in Electrical and Electronic Equipment Directive (2002/95/EC) is a European Union legal requirement affecting the global electronics industry. RoHS requirements must be implemented on Lenovo products placed on the market after June 2006. Products on the market before June 2006 are not required to have RoHS compliant parts. If the original FRU parts are non-compliant, replacement parts can also be non-compliant. In all cases if the original FRU parts are RoHS compliant, the replacement part must also be RoHS compliant.

Note: RoHS and non-RoHS FRU part numbers with the same fit and function are identified with unique FRU part numbers.

Lenovo plans to transit to RoHS compliance well before the implementation date and expects its suppliers to be ready to support Lenovo's requirements and schedule in the EU. Products sold in 2005 and 2006 will contain some RoHS compliant FRUs. The following statement pertains to these products and any product Lenovo produces containing RoHS compliant FRUs.

RoHS compliant FRUs have unique FRU part numbers. Before or after the RoHS implementation date, failed RoHS compliant parts must always be replaced with RoHS compliant ones, so only the FRUs identified as compliant in the system HMM or direct substitutions for those FRUs may be used.

Products marketed before June 2006		Products marketed after June 2006	
Current or original part	Replacement FRU	Current or original part	Replacement FRU
Non-RoHS	Can be Non-RoHS	Must be RoHS	Must be RoHS
Non-RoHS	Can be RoHS		
Non-RoHS	Can sub to RoHS		
RoHS	Must be RoHS		

Note: A direct substitution is a part with a different FRU part number that is automatically shipped by the distribution center at the time of the order.

General checkout

This chapter presents the following information:

- “What to do first” on page 20
- “Power system checkout” on page 21

Before you go to the checkout, make sure to read the following important notes:

Important notes:

- **Only certified trained personnel can service the computer.**
- **Before replacing any FRU, read the entire page on removing and replacing FRUs.**
- **Carefully remove screws for reuse when replacing FRUs.**
- **Be extremely careful during such write operations as copying, saving, or formatting.** Drives in the computer that you are servicing sequence might have been altered. If you select an incorrect drive, data or programs might be overwritten.
- **Replace an FRU only with another FRU of the correct model.** When you replace an FRU, make sure that the machine model and the FRU part number are correct by referring to the FRU parts list.
- **An FRU should not be replaced just because of a single, unreproducible failure.** Single failures can occur for a variety of reasons that have nothing to do with a hardware defect, such as cosmic radiation, electrostatic discharge, or software errors. Consider replacing an FRU only when a problem recurs. If you suspect that an FRU is defective, clear the error logs and run the test again. If the error does not recur, do not replace the FRU.
- **Be careful not to replace a nondefective FRU.**

What to do first

When you do return an FRU, you must include the following information in the parts exchange form or parts return form that you attach to it:

1. Name and phone number of servicer
2. Date of service
3. Date on which the machine failed
4. Date of purchase
5. Procedure index and page number in which the failing FRU was detected
6. Failing FRU name and part number
7. Machine type, model number, and serial number
8. Customer's name and address

Note for warranty: During the warranty period, the customer may be responsible for repair costs if the computer damage was caused by misuse, accident, modification, unsuitable physical or operating environment, or improper maintenance by the customer.

The following is a list of some common items that are not covered under warranty and some symptoms that might indicate that the system was subjected to stress beyond normal use.

Before checking problems with the computer, determine whether the damage is covered under the warranty by referring to the following list:

The following are not covered under warranty:

- LCD panel cracked from the application of excessive force or from being dropped
- Scratched (cosmetic) parts
- Distortion, deformation, or discoloration of the cosmetic parts
- Plastic parts, latches, pins, or connectors that have been cracked or broken by excessive force
- Damage caused by liquid spilled into the system
- Damage caused by the improper insertion of a PC Card or the installation of an incompatible card
- Improper disk insertion or use of an optical drive
- Diskette drive damage caused by pressure on the diskette drive cover, foreign material in the drive, or the insertion of a diskette with multiple labels
- Damaged or bent diskette eject button
- Fuses blown by attachment of a nonsupported device
- Forgotten computer password (making the computer unusable)
- Sticky keys caused by spilling a liquid onto the keyboard
- Use of an incorrect AC adapter on laptop products

The following symptoms might indicate damage caused by nonwarranted activities:

- Missing parts might be a symptom of unauthorized service or modification.
- If the spindle of a hard disk drive becomes noisy, it may have been subjected to excessive force, or dropped.

Power system checkout

To verify a symptom, follow the steps below:

1. Turn off the computer.
2. Remove the battery pack.
3. Connect the AC adapter.
4. Make sure that power is supplied when you turn on the computer.
5. Turn off the computer.
6. Disconnect the AC adapter and install the charged battery pack.
7. Make sure that the battery pack supplies power when you turn on the computer.

If you suspect a power problem, see the appropriate one of the following power supply checkouts:

- “Checking the AC adapter” on page 21
- “Checking operational charging” on page 21
- “Checking the battery pack” on page 22

Checking the AC adapter

You are here because the computer fails only when the AC adapter is used.

- If the power-on indicator does not turn on, check the power cord of the AC adapter for correct continuity and installation.
- If the computer does not charge during operation, go to “Checking operational charging”.

To check the AC adapter, follow the steps below:

1. Unplug the AC adapter cable from the computer.
2. Measure the output voltage at the plug of the AC adapter cable. See the following figure:



Pin	Voltage (V DC)
1	+20
2	0

Note: Output voltage for the AC adapter pin No. 2 may differ from the one you are servicing.

3. If the voltage is not correct, replace the AC adapter.
4. If the voltage is acceptable, do the following:
 - Replace the system board.
 - If the problem persists, go to “Lenovo G50-30/G50-45/G50-70/G50-70m/Z50-70/Z50-75/G50-80” on page 26.

Note: Noise from the AC adapter does not always indicate a defect.

Checking operational charging

To check whether the battery charges properly during operation, use a discharged battery pack or a battery pack that has less than 50% of the total power remaining when installed in the computer.

Perform operational charging. If the battery status indicator or icon does not light on, remove the battery pack and let it return to room temperature. Reinstall the battery pack. If the charge indicator or icon is still off, replace the battery pack.

If the charge indicator still does not light on, replace the system board. Then reinstall the battery pack. If it is still not charged, go to the next section.

Checking the battery pack

Battery charging does not start until the Power Meter shows that less than 95% of the total power remains; under this condition the battery pack can charge to 100% of its capacity. This protects the battery pack from being overcharged or from having a shortened life.

To check your battery, move your cursor to the Power Meter icon in the icon tray of the Windows® taskbar and wait for a moment (but do not click it), and the percentage of battery power remaining is displayed. To get detailed information about the battery, double-click the Power Meter icon.

Note: If the battery pack becomes hot, it may not be able to be charged. Remove it from the computer and leave it at room temperature for a while. After it cools down, reinstall and recharge it.

Related service information

This chapter presents the following information:

- “Restoring the factory contents by using OneKey Recovery” on page 23
- “Passwords” on page 24
- “Power management” on page 25

Restoring the factory contents by using OneKey Recovery

Restore of factory default

The Lenovo G50-30/G50-45/G50-70/G50-70m/Z50-70/Z50-75/G50-80 computers come with pre-installed OneKey Recovery System. In order to save application files and the initial backed up files of the system, the hard disk in a Lenovo computer includes a hidden partition when it is shipped. If you need to restore the system to the point of your first boot up, just enter Lenovo OneKey Recovery System and run **System Recovery**. For details of OneKey Recovery System, see *the User Guide for Lenovo OneKey Recovery system*.

Note: This will delete all the new data on the system partition (C drive), which is not recoverable. Make sure to back up your critical data before you perform this action.

When you use the recovery discs to boot your computer, the system will enter the user interface for system recovery automatically. Please follow the prompt to insert the backup discs to complete the whole recovery process.

Note: The recovery process might take up to 2 hours.

Passwords

As many as three passwords may be needed for any Lenovo computer: the power-on password (POP), the hard disk password (HDP), and the administrator password.

If any of these passwords has been set, a prompt for it appears on the screen whenever the computer is turned on. The computer does not start until the password is entered.

Power-on password

A power-on password (POP) protects the system from being powered on by an unauthorized person. The password must be entered before an operating system can be booted.

Hard-disk password

There are two hard-disk passwords (HDPs):

+ User HDP - for the user

+ Master HDP - for the system administrator, who can use it to get access to the hard disk drive even if the user has changed the user HDP

Attention: If the user HDP has been forgotten, check whether a master HDP has been set. If it has, it can be used for access to the hard disk drive. If no master HDP is available, neither Lenovo nor Lenov authorized service technicians provide any services to reset either the user or the master HDP, or to recover data from the hard disk drive. The hard disk drive can be replaced for a scheduled fee.

Administrator password

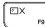
Administrator password controls the access of the whole setup utility. Only Administrator password was set then User password can be set. If Administrator password was cleared, the User password was cleared too.

Power management

Note: Power management modes are not supported for APM operating system.

To reduce power consumption, the computer has three power management modes: screen blank, sleep (standby), and hibernation.

Screen blank state

If the time set on the “Turn off monitor” timer in the operating system expires, the LCD backlight turns off. You can also turn off the LCD backlight by pressing .

To end screen blank state and resume normal operation, press .

Putting the computer to sleep or shutting it down

When you have finished working with your computer, you can put it to sleep or shut it down.

Putting your computer to sleep

If you will be away from your computer for only a short time, put the computer to sleep. When the computer is in sleep mode, you can quickly wake it to resume use, bypassing the startup process. To put the computer to sleep, do one of the following:

- Close the display panel.
- Press the power button.
- Open the Charms and then select **Settings**  → **Power**  → **Sleep**.




Attention: Wait until the power indicator light starts blinking (indicating that the computer is in sleep mode) before you move your computer. Moving your computer while the hard disk is spinning can damage the hard disk, causing loss of data.

To wake the computer, do one of the following:

- Press any key on the keyboard.
- Press the power button.

Shutting down the computer

If you are not going to use your computer for a long time, shut it down. To shut down your computer:

- Open the charms bar, then select **Settings**  → **Power**  → **Shut down**.
- Right-click the **Start** button in the lower-left corner and select **Shut down or sign out** → **Shut down**.
- Select  → **Shut down** in the upper-right corner of the Start screen.

Note: The operation depends on the BIOS setup. Please refer to the actual product.

Lenovo G50-30/G50-45/G50-70/G50-70m/Z50-70/Z50-75/G50-80

This chapter presents the following product-specific service references and product-specific parts information:

- “Specifications” on page 26
- “Status indicators” on page 29
- “Hotkeys” on page 30
- “FRU replacement notices” on page 31
- “Removing and replacing an FRU” on page 32
- “Locations” on page 68
- “Parts list” on page 70

Specifications

The following table lists the specifications of the Lenovo G50-30/G50-45/G50-70/G50-70m/Z50-70/Z50-75/G50-80:

Table 1. Specifications

Feature	Description
Processor	<ul style="list-style-type: none"> • See the system properties of your computer, you can do this as follows: Open the Control Panel, and then select System and Security → System.
Bus architecture	<ul style="list-style-type: none"> • G50-30: GPU: PCIe 2.0, 5GT/s WLAN: PCIe 1.0, 2.5GT/s RAM: DDR3L, 1066MT/s,1333MT/s LCD: eDP 1.3, 2.7GT/s HDMI Port: HDMI 1.4, 1.65GT/s HDD: SATA 2.0, 3Gb/s ODD: SATA 1.0, 1.5Gb/s USB Port: USB 3.0, 5Gb/s USB 2.0, 480Mb/s BT: USB2.0, 480Mb/s Card Reader: SD3.0, 50Mb/s SMBus 2.0 LPC 1.1 HDA SPI

Table 1. Specifications (continued)

Feature	Description
Bus architecture (continued)	<ul style="list-style-type: none"> <li data-bbox="465 280 994 826"> <p>G50-45: GPU: GPP (General Purpose Port), PCIe 2.0, 5GT/s WLAN: PCIe 1.0, 2.5GT/s RAM: DDR3L, 1600MT/s MAX → 1 DIMM DDR3L, 1333MT/s MAX → 2 DIMM DMI x 4, N/A → NO SUPPORT FDI x 2, N/A → NO SUPPORT LCD: eDP 1.2, 5.4GT/s HDMI Port: HDMI 1.4, 1.65GT/s HDD: SATA 3.0, 6Gb/s ODD: SATA 1.0, 1.5Gb/s USB Port: USB 3.0, 5Gb/s USB 2.0, 480Mb/s BT: USB2.0, 480Mb/s Card Reader: SD3.0, 50Mb/s VGA: VESA 1.1, Integrated VGA support up to 1920x1200@60Hz & 30bpp SMBus 2.0, 100KHz LPC 1.1 HD Audio: 1.5V bus SPI: up to 100 MHz</p> <li data-bbox="465 834 994 938"> <p>G50-70: 1600MHz DDR3 SDRAM (PC3-12800S) PCI Express bus DMI</p> <li data-bbox="465 946 994 1409"> <p>G50-70m/Z50-70/Z50-75: GPU: PCIe 2.0, 5GT/s WLAN: PCIe 1.0, 2.5GT/s RAM: DDR3L, 1600MT/s LCD: eDP 1.2, 5.4GT/s HDMI Port: HDMI 1.4, 1.65GT/s HDD: SATA 3.0, 6Gb/s ODD: SATA 1.0, 1.5Gb/s USB Port: USB 3.0, 5Gb/s USB 2.0, 480Mb/s BT: USB2.0, 480Mb/s Card Reader: SD3.0, 50Mb/s VGA: DP to VGA (G50-70m/Z50-70) VGA: VGA (Z50-75m) SMBus 2.0 LPC 1.1 HDA SPI</p>

Table 1. Specifications (continued)



Feature	Description
Graphic memory chip	<ul style="list-style-type: none"> Integrated / AMD Jel LE / AMD Jel Pro / nvidia N15S-GT / nvidia N15V-GM
Display	<ul style="list-style-type: none"> 15.6" 16:9, 1,366 × 768 pixels HD / 1,920 × 1,080 pixels FHD
Standard memory	<ul style="list-style-type: none"> DDR3L, SODIMM × 1 / SODIMM × 2 (max 8 GB / 16 GB)
CMOS RAM	<ul style="list-style-type: none"> 256 Bytes
Hard disk drive	<ul style="list-style-type: none"> 2.5-inch, 7 mm / 9.5 mm SATA 320 GB / 500 GB / 1TB 5,400 rpm
Optical drive	<ul style="list-style-type: none"> Internal 9.0 mm (Rambo)
I/O port	<ul style="list-style-type: none"> Combo audio jack × 1 RJ45 × 1 HDMI port × 1 USB 2.0 port × 2, USB 3.0 port × 1 2 in 1 slot × 1 (SD/MMC)
Audio	<ul style="list-style-type: none"> 1/8" Combo audio jack 1.5 W speakers × 2 Single Microphone / Array Microphone
Ethernet (on the system board)	<ul style="list-style-type: none"> 10/100/1,000 Mbps
Bluetooth wireless	<ul style="list-style-type: none"> Combined in combo card
Keyboard	<ul style="list-style-type: none"> 6 rows Lenovo Keyboard
Touchpad	<ul style="list-style-type: none"> Multi-touch type
Integrated camera	<ul style="list-style-type: none"> HD (720p)/0.3 M
Battery	<ul style="list-style-type: none"> 4 cell, 2,200 mAh / 2,800 mAh
AC adapter	<ul style="list-style-type: none"> 20 V, 65 W or 45 W
Pre-installed operating system	<ul style="list-style-type: none"> Windows 8.1

Status indicators

The system status indicators below show the computer status:





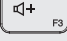

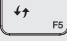

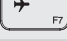
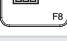
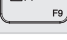

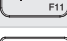

Table 2. Status indicators

Indicator	Indicator status	Charge status	Meaning
1 Power 	On (solid white)	---	The computer is powered on.
	Blinking	---	The computer is in sleep mode.
	Off	---	The computer is powered off.
2 Battery 	On (solid white)	Charging	The battery has more than 80% charge.
		Discharging	The battery has more than 20% charge.
	On (solid amber)	Discharging	The battery has between 5% and 20% charge.
	Blinking slowly (white)	Charging	The battery has between 20% and 80% charge. When the battery reaches 80% charge, the light will stop blinking. However, charging will continue until the battery is fully charged.
			The battery has less than 20% charge. When the battery charge reaches 20%, the blinking color will change to white.
			The battery has less than 5% charge.
Blinking slowly (amber)	Charging/ Discharging		
Blinking quickly (amber)	Charging/ Discharging		

Hotkeys

You can access certain system settings quickly by pressing the appropriate hotkeys.

Table 3. Hotkeys

 F1	Mutes/unmutes the sound.
 F2	Decreases the volume level.
 F3	Increases the volume level.
 F4	Closes the currently active window.
 F5	Refreshes the desktop or the currently active window.
 F6	Enables/disables the touchpad.
 F7	Enables/disables Airplane mode.
 F8	Displays all currently active apps.
 F9	Turns on/off the backlight of the LCD screen.
 F10	Toggles the display between the computer and an external device.
 F11	Decreases display brightness.
 F12	Increases display brightness.

FRU replacement notices

This section presents notices related to removing and replacing parts. Read this section carefully before replacing any FRU.

Screw notices

Loose screws can cause a reliability problem. In the Lenovo computer, this problem is addressed with special nylon-coated screws that have the following characteristics:

- They maintain tight connections.
- They do not easily come loose, even with shock or vibration.
- They are harder to tighten.
- Each one should be used only once.

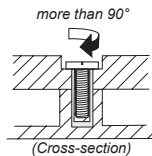
Do the following when you service this machine:

- Keep the screw kit in your tool bag.
- Carefully remove screws for reuse when replacing FRUs.
- Use a torque screwdriver if you have one.

Tighten screws as follows:

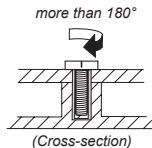
- **Plastic to plastic**

Turn an additional 90° after the screw head touches the surface of the plastic part:



- **Logic card to plastic**

Turn an additional 180° after the screw head touches the surface of the logic card:



- **Torque driver**

If you have a torque screwdriver, refer to the “Torque” column for each step.

- Make sure that you use the correct screws. If you have a torque screwdriver, tighten all screws firmly to the torque shown in the table. **Carefully remove screws for reuse when replacing FRUs. Make sure that all screws are tightened firmly.**
- Ensure torque screwdrivers are calibrated correctly following country specifications.

Removing and replacing an FRU

This section presents exploded figures with the instructions to indicate how to remove and replace the FRU. Make sure to observe the following general rules:

1. Do not attempt to service any computer unless you have been trained and certified. An untrained person runs the risk of damaging parts.
2. Before replacing any FRU, review “FRU replacement notices” on page 31.
3. Begin by removing any FRUs that have to be removed before the failing FRU. Any of such FRUs are listed at the top of the page. Remove them in the order in which they are listed.
4. Follow the correct sequence in the steps to remove the FRU, as given in the figures by the numbers in square callouts.
5. When turning a screw to replace an FRU, turn it in the direction as given by the arrow in the figure.
6. When removing the FRU, move it in the direction as given by the arrow in the figure.
7. To put the new FRU in place, reverse the removal procedures and follow any of the notes that pertain to replacement. For information about connecting and arranging internal cables, see “Locations” on page 68.
8. When replacing an FRU, use the correct screw as shown in the procedures.

DANGER

Before removing any FRU, turn off the computer, unplug all power cords from electrical outlets, remove the battery pack, and then disconnect any of the interconnecting cables.

Attention: After replacing an FRU, do not turn on the computer until you have made sure that all screws, springs, and other small parts are in place and none are loose inside the computer. Verify this by shaking the computer gently and listening for rattling sounds. Metallic parts or metal flakes can cause electrical short circuits.

Attention: The system board is sensitive to, and can be damaged by, electrostatic discharge. Before touching it, establish personal grounding by touching a ground point with one hand or using an electrostatic discharge (ESD) strap (P/N 6405959) to remove potential shock reasons.

Notes:

- The following procedures about removing and replacing FRUs are the same for the Lenovo G50-30/G50-45/G50-70/G50-70m/Z50-70/Z50-75/G50-80.
- The illustrations used in this section are of the Lenovo G50-70, unless otherwise stated.

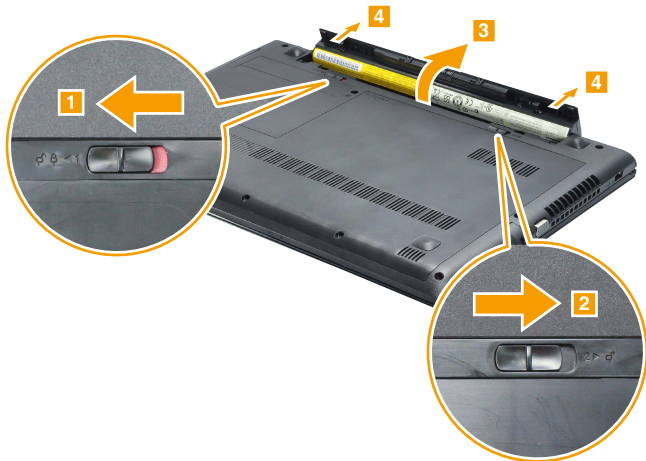
1010 Battery pack

⚠ DANGER

Only use the battery specified in the parts list for your computer. Any other battery could ignite or explode.

Figure 1. Removal steps of battery pack

Unlock the manual latch **1**. Slide the spring-loaded latch to the unlocked position **2** to eject the battery pack. Lift up the inner edge of the battery pack, pivoting it on the outer edge **3**. Gently raise the battery pack in the indicated direction **4** to remove it.



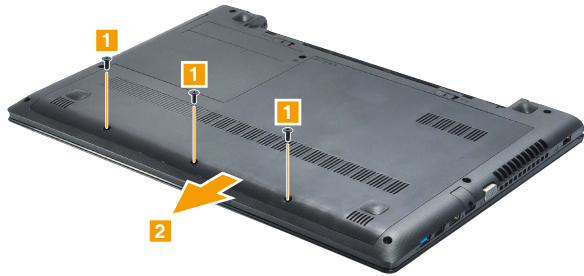
1020 Base cover

For access, remove this FRU:

- “1010 Battery pack” on page 33

Figure 2. Removal steps of base cover

Remove the screws **1**. Then remove the base cover **2**.



Step	Screw (quantity)	Color	Torque
1	M2 × 3.5 mm, Phillips-head, nylok-coated (3) Big Door to D	Black	1.5 ~ 2.0 kgf*cm

Note: Applying labels to the base cover

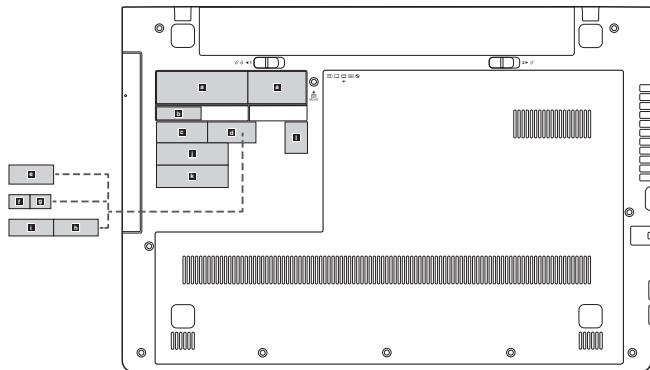
The new base cover FRU is shipped with a kit containing labels of several kinds. When you replace the base cover, you need to apply the following label:

The following labels need to be peeled off from the old base cover and put on the new base cover.

- a** Rating label
- b** Indonesia D side label
- c** Brazil BT label
- d** Brazil WL label
- e** Israel WL label
- f** SIRIM BT label
- g** SIRIM WL label
- h** WL label for US/CA/TW/Indonesia
- i** BT label for US/CA/TW/Indonesia
- j** KCC label
- k** BIS label
- l** Windows 8 OS label

For some models, you also need to apply one or two FCC labels. Check the old base cover; if it has one or two FCC labels, find duplicates of them in the label kit and apply them to the new base cover.

For the location of each label, refer to the following figure:



1030 Optical drive

For access, remove this FRU:

- “1010 Battery pack” on page 33
- “1020 Base cover” on page 34

Figure 3. Removal steps of optical drive

Remove the screw **1**. Pull the optical drive out in the direction shown by arrow **2**.



Step	Screw (quantity)	Color	Torque
1	M2 × 3.5 mm, Phillips-head, nylok-coated (1) ODD BRK + D	Black	1.5 ~ 2.0 kgf*cm

Remove the screw **3**, then remove the optical drive bracket in the direction shown by arrow **4**.



Step	Screw (quantity)	Color	Torque
3	M2 × 3.5 mm, Phillips-head, nylok-coated (1) ODD BKT + ODD	Black	1.5 ~ 2.0 kgf*cm

Carefully remove the optical drive bezel in the direction shown by arrow **5**.



1040 Hard disk drive

For access, remove these FRUs in order:

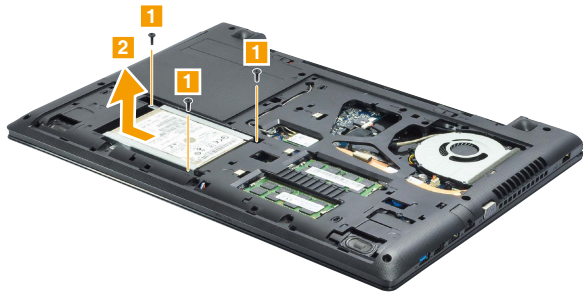
- “1010 Battery pack” on page 33
- “1020 Base cover” on page 34

Attention:

- **Do not drop the hard disk drive or apply any physical shock to it.** The hard disk drive is sensitive to physical shock. Improper handling can cause damage and permanent loss of data.
- Before removing the drive, suggest the customer to backup all the information on it if possible.
- Never remove the drive while the system is operating or in suspend mode.

Figure 4. Removal steps of hard disk drive

Remove the screws **1**. Detach the HDD connector and then remove the hard disk drive from the slot in the direction shown by arrow **2**.



Step	Screw (quantity)	Color	Torque
1	M2 × 3.5 mm, Phillips-head, nylok-coated (3 or 4) HDD BRK + D	Black	1.5 ~ 2.0 kgf*cm

When installing: Make sure that the HDD connector is attached firmly.

Figure 4. Removal steps of hard disk drive (continued)

Remove the screws **3** and detach the metal frame from the hard disk drive.



Step	Screw (quantity)	Color	Torque
3	M2 × 3.5 mm, Phillips-head, nylok-coated (4) HDD BKT + HDD	Silver	1.5 ~ 2.0 kgf*cm

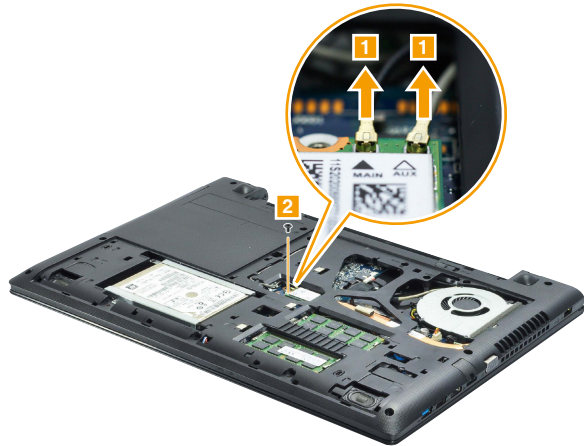
1050 PCI Express Mini Card for wireless LAN

For access, remove these FRUs in order:

- “1010 Battery pack” on page 33
- “1020 Base cover” on page 34

Figure 5. Removal steps of PCI Express Mini Card for wireless LAN

Disconnect the two wireless LAN cables (black, grey) **1**, and then remove the screw **2**.



In step **1**, unplug the jacks by using the removal tool antenna RF connector (P/N: 08K7159), or pick up the connectors with your fingers and gently unplug them in the direction shown by the arrows.

Notes: The wireless LAN card has 2 cables in step **1**.

The wireless LAN card in some models might have 3 cables in step **1**.

Step	Screw (quantity)	Color	Torque
2	M2 × 3.5 mm, Phillips-head, nylok-coated (1) WLAN card + MB	Black	1.5 ~ 2.0 kgf*cm

Figure 5. Removal steps of PCI Express Mini Card for wireless LAN (continued)

Remove the card in the direction shown by arrow **3**.



When installing:

- In models with a wireless LAN card that has two antenna connectors, plug the black cable (1st) (MAIN) into the jack labeled **MAIN**, and the grey cable (2nd) (AUX) into the jack labeled **AUX** on the card.
- In models with a wireless LAN card that has three antenna connectors, plug the black cable (1st) (MAIN) into the jack labeled **1**, the grey cable (3rd) into the jack labeled **3**, and the white cable (2nd) (AUX) into the jack labeled **2** on the card.

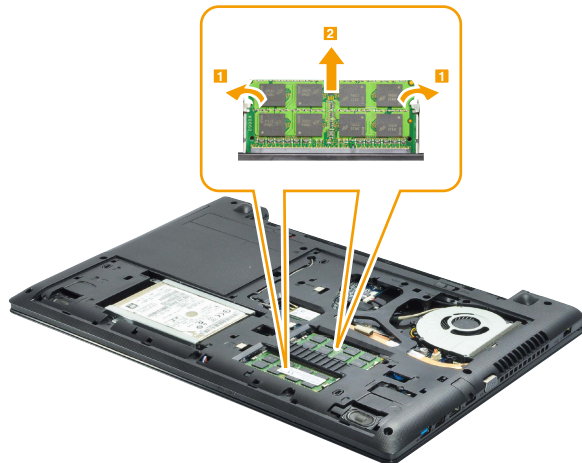
1060 DIMM

For access, remove these FRUs in order:

- “1010 Battery pack” on page 33
- “1020 Base cover” on page 34

Figure 6. Removal steps of DIMM

Release the two latches on both edges of the socket at the same time in the directions shown by arrows **1**, and then unplug the DIMM in the direction shown by arrow **2**.



When installing: Insert the notched end of the DIMM into the socket. Push the DIMM firmly, and pivot it until it snaps into place. Make sure that it is firmly fixed in the slot and is difficult to move.

Note: When replacing the memory is completed, you need to restart the computer after the first reboot.

1070 Fan assembly

Attention:

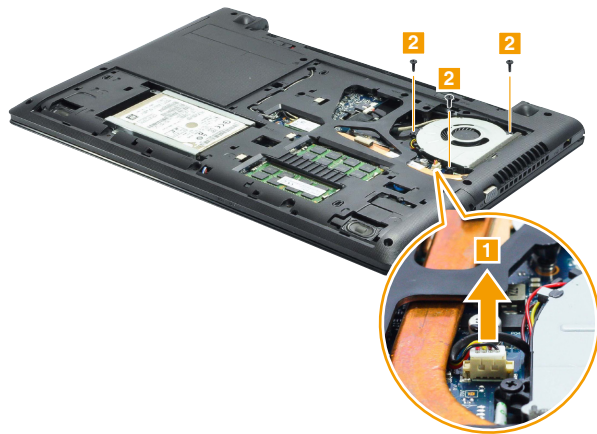
For the Lenovo G50-30, select models (computers with UMA architecture) do not have a thermal fan.

For access, remove these FRUs in order:

- “1010 Battery pack” on page 33
- “1020 Base cover” on page 34

Figure 7. Removal steps of fan assembly

Unplug the fan connector in the direction shown by arrow **1**. Then remove the screws **2**.



Note: Be careful not to damage the connector.

Step	Screw (quantity)	Color	Torque
2	M2 × 3.5 mm, Phillips-head, nylok-coated (3) Fan + MB	Black	1.5 ~ 2.0 kg*cm

When installing: Make sure that the connector is attached firmly.

Figure 7. Removal steps of fan assembly (continued)

Remove the fan **3**.



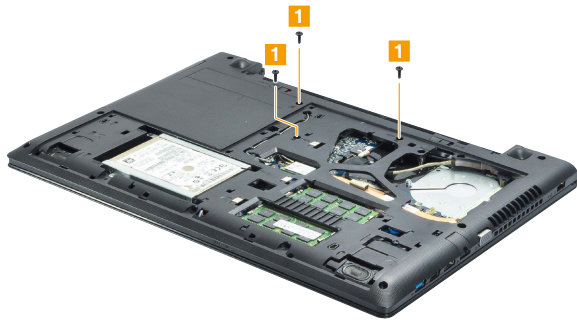
1080 Keyboard

For access, remove these FRUs in order:

- “1010 Battery pack” on page 33
- “1020 Base cover” on page 34
- “1070 Fan assembly” on page 42

Figure 8. Removal steps of keyboard

Remove the screws **1**.



Step	Screw (quantity)	Color	Torque
1	M2 × 3.5 mm, Phillips-head, nylok-coated (3) KB + D	Black	1.5 ~ 2.0 kg*cm

Figure 8. Removal steps of keyboard (continued)

Insert the screwdriver into the bottom hole **2**. Then pull the keyboard out of the keyboard bezel **3**.



Figure 8. Removal steps of keyboard (continued)

Lift the keyboard slightly **4**. Detach the connectors in the directions shown by arrows **5** and **6**. Then remove the keyboard.



When installing: Make sure that the FPC connector is attached firmly.

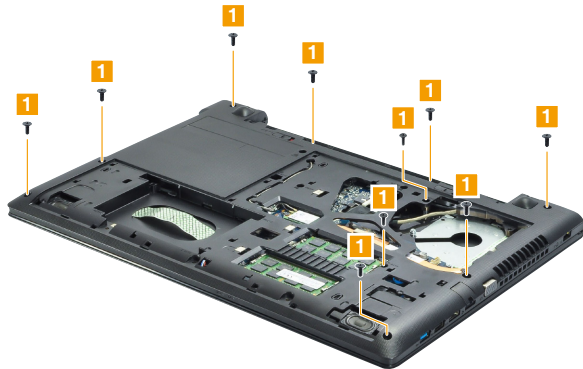
1090 Keyboard bezel

For access, remove these FRUs in order:

- “1010 Battery pack” on page 33
- “1020 Base cover” on page 34
- “1030 Optical drive” on page 36
- “1040 Hard disk drive” on page 37
- “1070 Fan assembly” on page 42
- “1080 Keyboard” on page 44

Figure 9. Removal steps of keyboard bezel

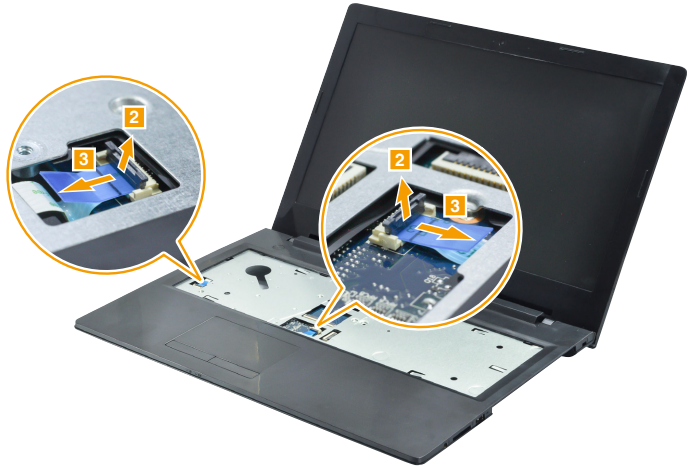
Remove the screws **1**.



Step	Screw (quantity)	Color	Torque
1	M2 × 3.5 mm, Phillips-head, nylok-coated (10) D + C	Black	1.5 ~ 2.0 kgf*cm

Figure 9. Removal steps of keyboard bezel (continued)

Disconnect the touchpad cable connector and the power board connector in the directions shown by arrows **2** and **3**.



Remove the keyboard bezel in the direction shown by arrow **4**.



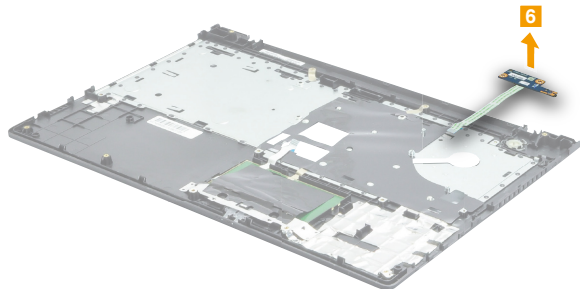
Figure 9. Removal steps of keyboard bezel (continued)

Remove the screw **5**.



Step	Screw (quantity)	Color	Torque
5	M2 × 3.5 mm, Phillips-head, nylok-coated (1) Power BD+C	Black	1.5 ~ 2.0 kgf*cm

Carefully remove the power board in the direction shown by arrow **6**.



1100 ODD board and USB&audio board

For access, remove these FRUs in order:

- “1010 Battery pack” on page 33
- “1020 Base cover” on page 34
- “1030 Optical drive” on page 36
- “1040 Hard disk drive” on page 37
- “1050 PCI Express Mini Card for wireless LAN” on page 39
- “1070 Fan assembly” on page 42
- “1080 Keyboard” on page 44
- “1090 Keyboard bezel” on page 47

Figure 10. Removal steps of ODD board and USB&audio board

Detach the ODD board connector in the directions shown by arrows **1** and **2**. Remove the screw **3**.



Step	Screw (quantity)	Color	Torque
3	M2 × 3.5 mm, Phillips-head, nylok-coated (1) ODD board + D	Black	1.5 ~ 2.0 kg [•] cm

Figure 10. Removal steps of ODD board and USB&audio board (continued)

Remove the ODD board **4**.



Figure 10. Removal steps of ODD board and USB&audio board (continued)

Detach the USB&audio board connector in the directions shown by arrows **5** and **6**. Remove the screw **7**.



Step	Screw (quantity)	Color	Torque
7	M2 × 3.5 mm, Phillips-head, nylok-coated (1) USB board + D	Black	1.5~2.0 kgf*cm

Figure 10. Removal steps of ODD board and USB&audio board (continued)

Remove the USB&audio board **8**.



1110 System board

Important notices for handling the system board:

When handling the system board, bear the following in mind.

- Be careful not to drop the system board on a bench top that has a hard surface, such as metal, wood, or composite.
- Avoid rough handling of any kind.
- During the whole process, make sure not to drop or stack the system board.
- If you put a system board down, make sure to put it only on a padded surface such as an ESD mat or conductive corrugated material.

For access, remove these FRUs in order:

- “1010 Battery pack” on page 33
- “1020 Base cover” on page 34
- “1030 Optical drive” on page 36
- “1040 Hard disk drive” on page 37
- “1050 PCI Express Mini Card for wireless LAN” on page 39
- “1070 Fan assembly” on page 42
- “1080 Keyboard” on page 44
- “1090 Keyboard bezel” on page 47
- “1100 ODD board and USB&audio board” on page 50

Figure 11. Removal steps of system board

Disconnect the two connectors in the directions shown by arrows **1** and **2**.



Figure 11. Removal steps of system board (continued)

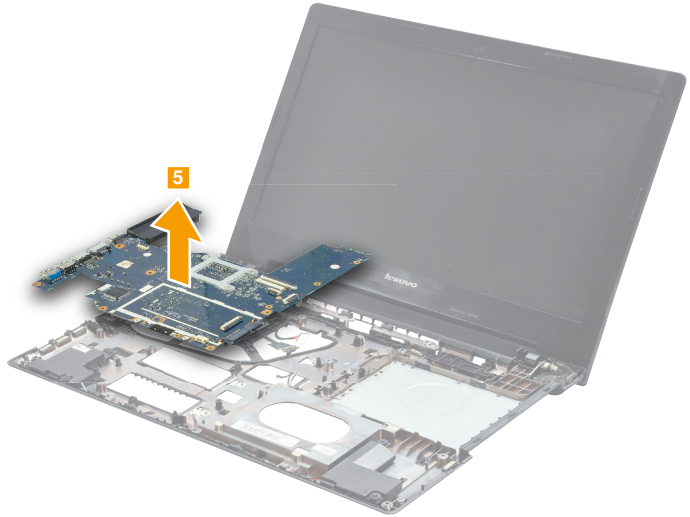
Unplug the speaker connector in the direction shown by arrow **3**. Remove the screws **4**.



Step	Screw (quantity)	Color	Torque
4	M2 × 3.5 mm, Phillips-head, nylok-coated (3) MB + D	Black	1.5 ~ 2.0 kgf*cm

Figure 11. Removal steps of system board (continued)

Remove the system board in the direction shown by arrow **5**.



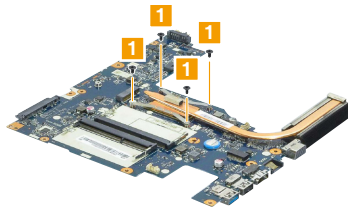
1120 Heat sink assembly

For access, remove these FRUs in order:

- “1010 Battery pack” on page 33
- “1020 Base cover” on page 34
- “1030 Optical drive” on page 36
- “1040 Hard disk drive” on page 37
- “1050 PCI Express Mini Card for wireless LAN” on page 39
- “1070 Fan assembly” on page 42
- “1080 Keyboard” on page 44
- “1090 Keyboard bezel” on page 47
- “1100 ODD board and USB&audio board” on page 54
- “1110 System board” on page 54

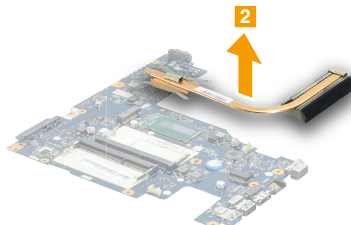
Figure 12. Removal steps of heat sink assembly

Remove the screws **1**.



Step	Screw (quantity)	Color	Torque
1	M2 × 3.5 mm, Phillips-head, nylok-coated (4) thermal+MB (G50-45/G50-70/G50-70m/Z50-70/Z50-75)	Black	1.5 ~ 2.0 kgf*cm
1	M2 × 3.5 mm, Phillips-head, nylok-coated (6) thermal+MB (G40-30)	Black	1.5 ~ 2.0 kgf*cm

Lift the heat sink assembly in the direction shown by arrow **2**.



1130 Speakers and DC-in cable

For access, remove these FRUs in order:

- “1010 Battery pack” on page 33
- “1020 Base cover” on page 34
- “1030 Optical drive” on page 36
- “1040 Hard disk drive” on page 37
- “1050 PCI Express Mini Card for wireless LAN” on page 39
- “1070 Fan assembly” on page 42
- “1080 Keyboard” on page 44
- “1090 Keyboard bezel” on page 47
- “1100 ODD board and USB&audio board” on page 50
- “1110 System board” on page 54

Figure 13. Removal steps of speakers and DC-in cable

Remove the speakers in the direction shown by arrows **1**.



Figure 13. Removal steps of speakers and DC-in cable (continued)

Remove the DC-in cable in the direction shown by arrow **2**.



1140 LCD unit

For access, remove these FRUs in order:

- “1010 Battery pack” on page 33
- “1020 Base cover” on page 34
- “1030 Optical drive” on page 36
- “1040 Hard disk drive” on page 37
- “1050 PCI Express Mini Card for wireless LAN” on page 39
- “1070 Fan assembly” on page 42
- “1080 Keyboard” on page 44
- “1090 Keyboard bezel” on page 47
- “1100 ODD board and USB&audio board” on page 50
- “1110 System board” on page 54
- “1130 Speakers and DC-in cable” on page 58

Figure 14. Removal steps of LCD unit

Release the antenna cables from the cable guides and then remove the screws **1**.



Step	Screw (quantity)	Color	Torque
1	M2 × 3.5 mm, Phillips-head, nylok-coated (4) HINGE + D cover	Black	1.5 ~ 2.0 kgf*cm

When installing:

- Route the antenna cables along the cable guides. As you route the cables, make sure that they are not subjected to any tension. Tension could cause the cables to be damaged by the cable guides, or a wire to be broken.
- Make sure that the LCD connector is attached firmly and that you do not pinch the antenna cables when you attach the LCD assembly. Route the LCD cable along the cable guides.

Figure 14. Removal steps of LCD unit (continued)

Remove the LCD unit in the direction shown by arrow **2**.



1150 LCD front bezel, LCD panel, and hinges

For access, remove these FRUs in order:

- “1010 Battery pack” on page 33
- “1020 Base cover” on page 34
- “1030 Optical drive” on page 36
- “1040 Hard disk drive” on page 37
- “1050 PCI Express Mini Card for wireless LAN” on page 39
- “1070 Fan assembly” on page 42
- “1080 Keyboard” on page 44
- “1090 Keyboard bezel” on page 47
- “1100 ODD board and USB&audio board” on page 50
- “1110 System board” on page 54
- “1130 Speakers and DC-in cable” on page 58
- “1140 LCD unit” on page 60

Figure 15. Removal steps of LCD front bezel, LCD panel, and hinges

Remove the LCD front bezel in the direction shown by arrows **1**.

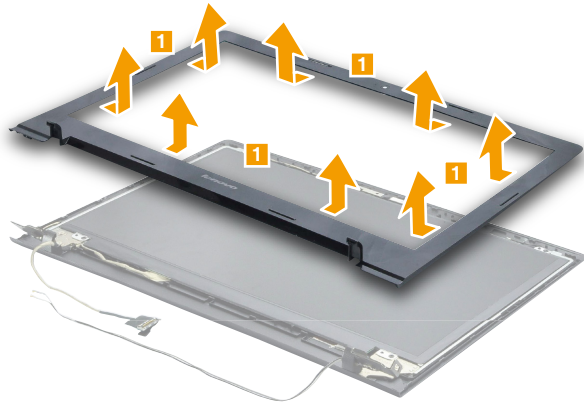
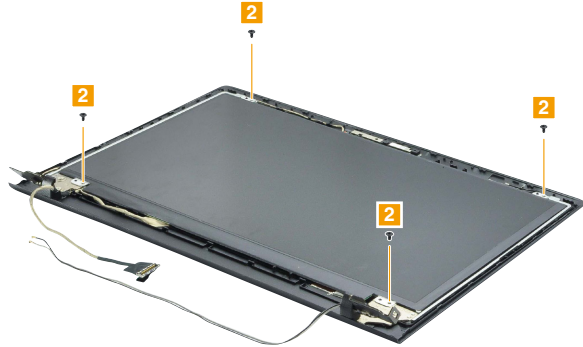


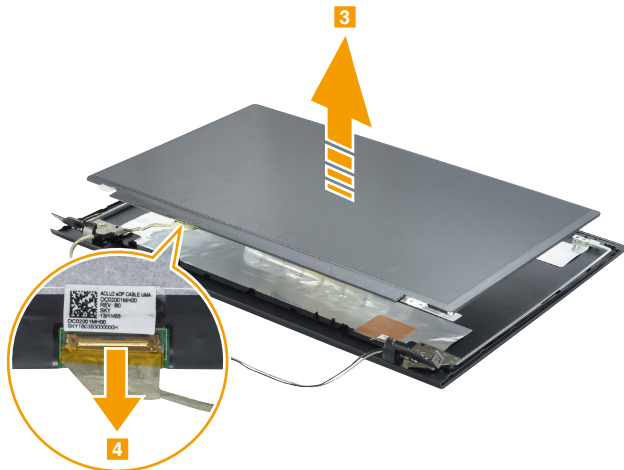
Figure 15. Removal steps of LCD front bezel, LCD panel, and hinges (continued)

Remove the screws **2**.



Step	Screw (quantity)	Color	Torque
2	M2 × 3.5 mm, Phillips-head, nylok-coated (4) LCD Module + Cover	Black	1.5 ~ 2.0 kgf*cm

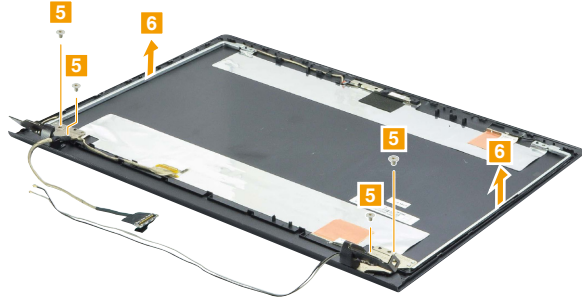
Lift the LCD panel slightly **3**. Peel off the adhesive tape and detach the connector in the direction shown by arrow **4**. Then remove the LCD panel.



When installing: Make sure that the metal connector is attached firmly.

Figure 15. Removal steps of LCD front bezel, LCD panel, and hinges (continued)

Remove the screws **5**. Then release the hinges in the direction shown by arrows **6**.



Step	Screw (quantity)	Color	Torque
5	M2 × 3.5 mm, Phillips-head, nylok-coated (4) Hinge L & R + Cover	Silver	1.5 ~ 2.0 kgf*cm

1160 Camera

For access, remove these FRUs in order:

- “1010 Battery pack” on page 33
- “1020 Base cover” on page 34
- “1030 Optical drive” on page 36
- “1040 Hard disk drive” on page 37
- “1050 PCI Express Mini Card for wireless LAN” on page 39
- “1070 Fan assembly” on page 42
- “1080 Keyboard” on page 44
- “1090 Keyboard bezel” on page 47
- “1100 ODD board and USB&audio board” on page 50
- “1110 System board” on page 54
- “1130 Speakers and DC-in cable” on page 58
- “1140 LCD unit” on page 60

Figure 16. Removal steps of camera

Detach the integrated camera connector in the direction shown by arrow **1**.

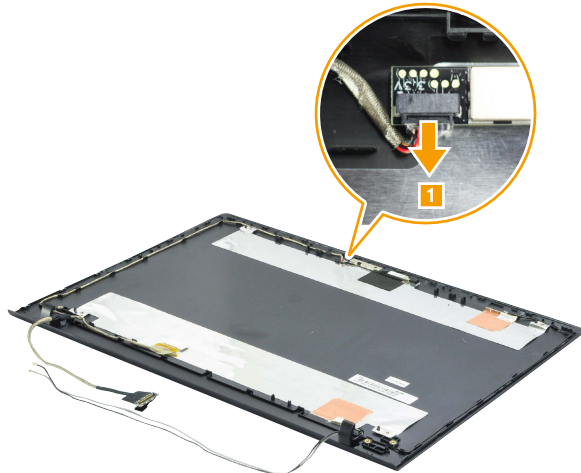


Figure 16. Removal steps of camera (continued)

Remove the camera in the direction shown by arrow 2.

Note: The integrated camera is stuck on the top center of the LCD cover.



When installing: Stick the integrated camera to the top center of the LCD cover and adjust its placement to make sure the connector is attached firmly.

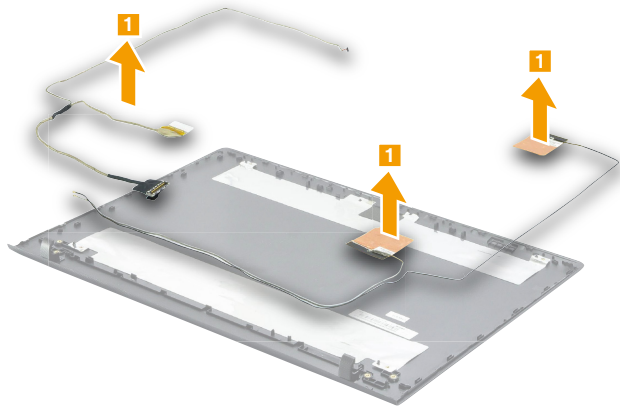
1170 LCD cable and antenna assembly

For access, remove these FRUs in order:

- “1010 Battery pack” on page 33
- “1020 Base cover” on page 34
- “1030 Optical drive” on page 36
- “1040 Hard disk drive” on page 37
- “1050 PCI Express Mini Card for wireless LAN” on page 39
- “1070 Fan assembly” on page 42
- “1080 Keyboard” on page 44
- “1090 Keyboard bezel” on page 47
- “1100 ODD board and USB&audio board” on page 50
- “1110 System board” on page 54
- “1130 Speakers and DC-in cable” on page 58
- “1140 LCD unit” on page 60
- “1150 LCD front bezel, LCD panel, and hinges” on page 62

Figure 17. Removal steps of LCD cable and antenna assembly

Remove the LCD cable and antenna assembly in the direction shown by arrows **1**.



Locations

Front view and right-side view

1 Integrated camera

2 Built-in microphone

Note: Select models may have two microphones, please refer to the actual product.

3 Wireless LAN antennas

4 Computer display

5 Power button

6 Touchpad

7 System status indicators

Note: For the description of each indicator, see “Status indicators” on page 29.

8 Combo audio jack

9 Memory card slot

10 USB port

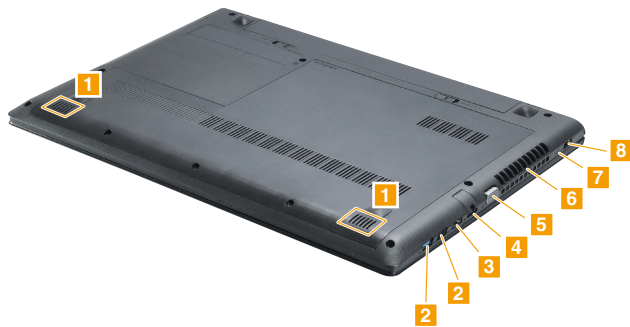
11 Optical drive

12 Kensington lock slot



Bottom and Left-side view

- 1 Speaker
- 2 USB port
- 3 HDMI port
- 4 RJ-45 port
- 5 VGA port
- 6 Fan louvers
- 7 Novo button
- 8 AC power adapter jack



Parts list

This section presents the following service parts:

- “Overall” on page 71
- “LCD FRUs” on page 82
- “Keyboard” on page 84
- “Miscellaneous parts” on page 86
- “AC adapters” on page 87
- “Screws” on page 87
- “Power cords” on page 88

Note:

Each FRU is available for all types or models, unless specific types or models are specified.

Attention:

Do not attempt to replace an FRU on your own. If an FRU is damaged, contact a Lenovo authorized servicer or a marketing representative for replacement or repair. Only qualified technicians can inspect or repair this product.

Overall

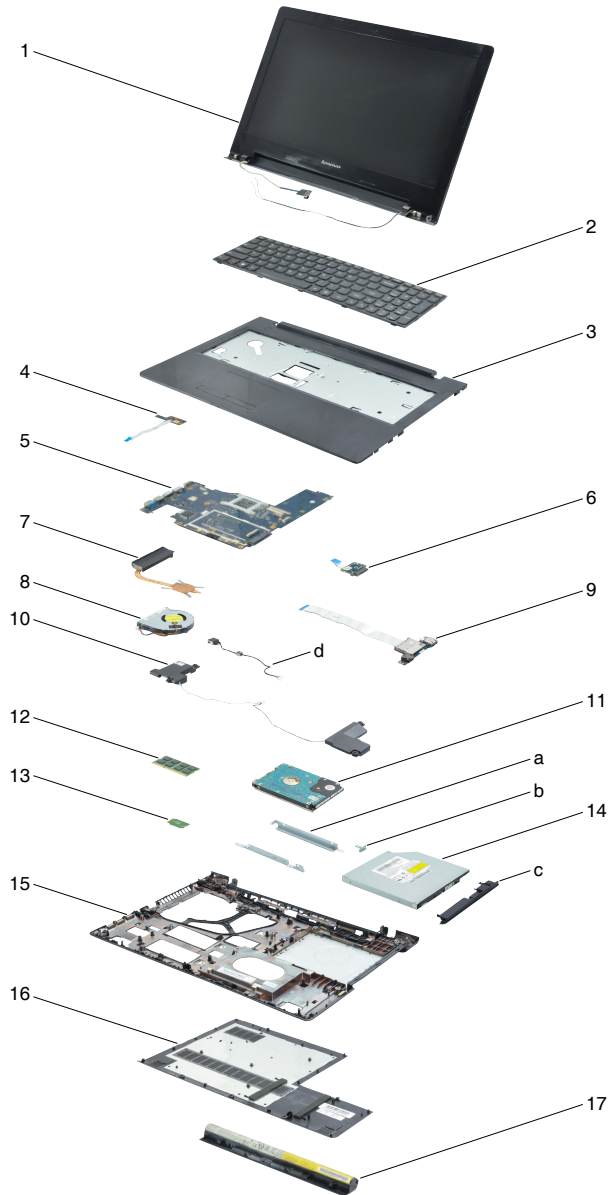


Table 4. Parts list—Overall

No.	FRU	FRU no.	CRU ID.	G50-30	G50-45	G50-70	G50-70m	Z50-70	Z50-75	G50-80	
a-d	See "Miscellaneous parts" on page 86.										
1	LCD unit (see "LCD FRUs" on page 82.)										
2	Keyboard (see "Keyboard" on page 84.)										
3	ACLU2 Upper Case Black	90205216	N	•	•	•				•	
3	ACLUH Upper Case Black M	90205321	N				•	•	•		
3	ACLUH Upper Case Silver H	90205322	N				•	•			
4	ACLU2 Power Board W/Cable	90005942	N	•		•	•	•	•		
4	Power Board L G50-45 W/Cable	5C50F77229	N		•						
4	Power Board L G50-80	5C50H19446	N							•	
5	ACLU0 MB UMA N3520 1000M	90007412	N	•							
5	ACLU0 MB W8P UMA N3520 1000M	90007424	N	•							
5	ACLU0 MB W8S UMA N3520 1000M	90007418	N	•							
5	ACLU0 MB UMA N3520 100M	90007413	N	•							
5	ACLU0 MB W8P UMA N3520 100M	90007425	N	•							
5	ACLU0 MB W8S UMA N3520 100M	90007419	N	•							
5	ACLU0 MB UMA N2815 1000M	90007414	N	•							
5	ACLU0 MB W8P UMA N2815 1000M	90007426	N	•							
5	ACLU0 MB W8S UMA N2815 1000M	90007420	N	•							
5	ACLU0 MB UMA N2815 100M	90007415	N	•							
5	ACLU0 MB W8P UMA N2815 100M	90007427	N	•							
5	ACLU0 MB W8S UMA N2815 100M	90007421	N	•							
5	ACLU0 MB UMA N2920 1000M	90007416	N	•							
5	ACLU0 MB W8P UMA N2920 1000M	90007428	N	•							
5	ACLU0 MB W8S UMA N2920 1000M	90007422	N	•							
5	ACLU0 MB UMA N2920 100M	90007417	N	•							
5	ACLU0 MB W8P UMA N2920 100M	90007429	N	•							
5	ACLU0 MB W8S UMA N2920 100M	90007423	N	•							
5	L G50-45 UMA A6-6310	5B20F77223	N		•						
5	L G50-45 DIS A6-6310 2G	5B20F77214	N		•						
5	L G50-45 DIS A6-6310 1G	5B20F77208	N		•						
5	L G50-45 W8S UMA A6-6310	5B20F77239	N		•						
5	L G50-45 W8S DIS A6-6310 2G	5B20F77232	N		•						
5	L G50-45 W8S DIS A6-6310 1G	5B20F77228	N		•						
5	L G50-45 W8P UMA A6-6310	5B20F77219	N		•						
5	L G50-45 W8P DIS A6-6310 2G	5B20F77212	N		•						
5	L G50-45 W8P DIS A6-6310 1G	5B20F77207	N		•						
5	L G50-45 UMA A4-6210	5B20F77242	N		•						
5	L G50-45 DIS A4-6210 2G	5B20F77235	N		•						
5	L G50-45 DIS A4-6210 1G	5B20F77226	N		•						
5	L G50-45 W8S UMA A4-6210	5B20F77217	N		•						
5	L G50-45 W8S DIS A4-6210 2G	5B20F77220	N		•						
5	L G50-45 W8S DIS A4-6210 1G	5B20F77213	N		•						
5	L G50-45 W8P UMA A4-6210	5B20F77206	N		•						
5	L G50-45 W8P DIS A4-6210 2G	5B20F77240	N		•						
5	L G50-45 W8P DIS A4-6210 1G	5B20F77233	N		•						
5	L G50-45 UMA E2-6110	5B20F77225	N		•						
5	L G50-45 DIS E2-6110 2G	5B20F77215	N		•						

Table 4. Parts list—Overall (continued)

No.	FRU	FRU no.	CRU ID.	G50-30	G50-45	G50-70	G50-70m	Z50-70	Z50-75	G50-80
5	L G50-45 DIS E2-6110 1G	5B20F77209	N		•					
5	L G50-45 W8S UMA E2-6110	5B20F77241	N		•					
5	L G50-45 W8S DIS E2-6110 2G	5B20F77236	N		•					
5	L G50-45 W8S DIS E2-6110 1G	5B20F77227	N		•					
5	L G50-45 W8P UMA E2-6110	5B20F77218	N		•					
5	L G50-45 W8P DIS E2-6110 2G	5B20F77230	N		•					
5	L G50-45 W8P DIS E2-6110 1G	5B20F77222	N		•					
5	L G50-45 UMA E1-6010	5B20F77211	N		•					
5	L G50-45 DIS E1-6010 2G	5B20F77205	N		•					
5	L G50-45 DIS E1-6010 1G	5B20F77238	N		•					
5	L G50-45 W8S UMA E1-6010	5B20F77231	N		•					
5	L G50-45 W8S DIS E1-6010 2G	5B20F77224	N		•					
5	L G50-45 W8S DIS E1-6010 1G	5B20F77216	N		•					
5	L G50-45 W8P UMA E1-6010	5B20F77210	N		•					
5	L G50-45 W8P DIS E1-6010 2G	5B20F77243	N		•					
5	L G50-45 W8P DIS E1-6010 1G	5B20F77237	N		•					
5	ACLU2 MB I7-4500U 2G 100M	90006512	N			•				
5	ACLU2 MB W8P I7-4500U 2G 100M	90006513	N			•				
5	ACLU2 MB W8S I7-4500U 2G 100M	90006514	N			•				
5	ACLU2 MB DIS I7-4500U 2G 1000M	90005938	N			•				
5	ACLU2 MB W8P I7-4500U 2G 1000M	90006495	N			•				
5	ACLU2 MB W8S I7-4500U 2G 1000M	90006496	N			•				
5	ACLU2 MB I5-4200U 2G 100M	90006530	N			•				
5	ACLU2 MB W8P I5-4200U 2G 100M	90006531	N			•				
5	ACLU2 MB W8S I5-4200U 2G 100M	90006532	N			•				
5	ACLU2 MB I5-4200U 2G 1000M	90006527	N			•				
5	ACLU2 MB W8P I5-4200U 2G 1000M	90006528	N			•				
5	ACLU2 MB W8S I5-4200U 2G 1000M	90006529	N			•				
5	ACLU2 MB I3-4100U 2G 100M	90006515	N			•				
5	ACLU2 MB W8P I3-4100U 2G 100M	90006516	N			•				
5	ACLU2 MB W8S I3-4100U 2G 100M	90006517	N			•				
5	ACLU2 MB DIS I3-4100U 2G 1000M	90005939	N			•				
5	ACLU2 MB W8P I3-4100U 2G 1000M	90006497	N			•				
5	ACLU2 MB W8S I3-4100U 2G 1000M	90006498	N			•				
5	ACLU2 MB I3-4010U 2G 100M	90006524	N			•				
5	ACLU2 MB W8P I3-4010U 2G 100M	90006525	N			•				
5	ACLU2 MB W8S I3-4010U 2G 100M	90006526	N			•				
5	ACLU2 MB I3-4010U 2G 1000M	90006521	N			•				
5	ACLU2 MB W8P I3-4010U 2G 1000M	90006522	N			•				
5	ACLU2 MB W8S I3-4010U 2G 1000M	90006523	N			•				
5	ACLU2 MB I3-4005U 2G 100M	90006518	N			•				
5	ACLU2 MB W8P I3-4005U 2G 100M	90006519	N			•				
5	ACLU2 MB W8S I3-4005U 2G 100M	90006520	N			•				
5	ACLU2 MB DIS I3-4005U 2G 1000M	90005940	N			•				
5	ACLU2 MB W8P I3-4005U 2G 1000M	90006499	N			•				
5	ACLU2 MB W8S I3-4005U 2G 1000M	90006500	N			•				
5	ACLU2 MB 3558U 2G 100M	90006509	N			•				

Table 4. Parts list—Overall (continued)

No.	FRU	FRU no.	CRU ID.	G50-30	G50-45	G50-70	G50-70m	Z50-70	Z50-75	G50-80
5	ACLU2 MB W8P 3558U 2G 100M	90006510	N			●				
5	ACLU2 MB W8S 3558U 2G 100M	90006511	N			●				
5	ACLU2 MB 3558U 2G 1000M	90006506	N			●				
5	ACLU2 MB W8P 3558U 2G 1000M	90006507	N			●				
5	ACLU2 MB W8S 3558U 2G 1000M	90006508	N			●				
5	ACLU2 MB DIS 2957U 2G 100M	90005937	N			●				
5	ACLU2 MB W8P 2957U 2G 100M	90006493	N			●				
5	ACLU2 MB W8S 2957U 2G 100M	90006494	N			●				
5	ACLU2 MB 2957U 2G 1000M	90006503	N			●				
5	ACLU2 MB W8P 2957U 2G 1000M	90006504	N			●				
5	ACLU2 MB W8S 2957U 2G 1000M	90006505	N			●				
5	ACLU2 MB UMA I7-4500U 100M	90006569	N			●				
5	ACLU2 MB W8P UMA I7-4500U 100M	90006570	N			●				
5	ACLU2 MB W8S UMA I7-4500U 100M	90006571	N			●				
5	ACLU2 MB W8P UMA I7-4500U 1000M	90006567	N			●				
5	ACLU2 MB W8S UMA I7-4500U 1000M	90006568	N			●				
5	ACLU2 MB UMA I5-4200U 100M	90006563	N			●				
5	ACLU2 MB W8P UMA I5-4200U 100M	90006564	N			●				
5	ACLU2 MB W8S UMA I5-4200U 100M	90006565	N			●				
5	ACLU2 MB W8P UMA I5-4200U 1000M	90006561	N			●				
5	ACLU2 MB W8S UMA I5-4200U 1000M	90006562	N			●				
5	ACLU2 MB UMA I3-4100U 100M	90006557	N			●				
5	ACLU2 MB W8P UMA I3-4100U 100M	90006558	N			●				
5	ACLU2 MB W8S UMA I3-4100U 100M	90006559	N			●				
5	ACLU2 MB W8P UMA I3-4100U 1000M	90006555	N			●				
5	ACLU2 MB W8S UMA I3-4100U 1000M	90006556	N			●				
5	ACLU2 MB UMA I3-4010U 100M	90006551	N			●				
5	ACLU2 MB W8P UMA I3-4010U 100M	90006552	N			●				
5	ACLU2 MB W8S UMA I3-4010U 100M	90006553	N			●				
5	ACLU2 MB W8P UMA I3-4010U 1000M	90006549	N			●				
5	ACLU2 MB W8S UMA I3-4010U 1000M	90006550	N			●				
5	ACLU2 MB UMA I3-4005U 100M	90006545	N			●				
5	ACLU2 MB W8P UMA I3-4005U 100M	90006546	N			●				
5	ACLU2 MB W8S UMA I3-4005U 100M	90006547	N			●				
5	ACLU2 MB W8P UMA I3-4005U 1000M	90006543	N			●				
5	ACLU2 MB W8S UMA I3-4005U 1000M	90006544	N			●				
5	ACLU2 MB UMA 3558U 100M	90005941	N			●				
5	ACLU2 MB W8P UMA 3558U 100M	90006501	N			●				
5	ACLU2 MB W8S UMA 3558U 100M	90006502	N			●				
5	ACLU2 MB W8P UMA 3558U 1000M	90006540	N			●				
5	ACLU2 MB W8S UMA 3558U 1000M	90006541	N			●				
5	ACLU2 MB UMA 2957U 100M	90006536	N			●				
5	ACLU2 MB W8P UMA 2957U 100M	90006537	N			●				
5	ACLU2 MB W8S UMA 2957U 100M	90006538	N			●				
5	ACLU2 MB W8P UMA 2957U 1000M	90006534	N			●				
5	ACLU2 MB W8S UMA 2957U 1000M	90006535	N			●				
5	ACLU2 MB UMA 2957U 1000M	90006533	N			●		●		

Table 4. Parts list—Overall (continued)

No.	FRU	FRU no.	CRU ID.	G50-30	G50-45	G50-70	G50-70m	Z50-70	Z50-75	G50-80
5	ACLU2 MB UMA 3558U 1000M	90006539	N			•		•		
5	ACLU2 MB UMA I3-4005U 1000M	90006542	N			•		•		
5	ACLU2 MB UMA I3-4010U 1000M	90006548	N			•		•		
5	ACLU2 MB UMA I3-4100U 1000M	90006554	N			•		•		
5	ACLU2 MB UMA I5-4200U 1000M	90006560	N			•		•		
5	ACLU2 MB UMA I7-4500U 1000M	90006566	N			•		•		
5	ACLUH MB I7-4500U 2G 1000M	90006971	N				•	•		
5	ACLUH MB W8P I7-4500U 2G 1000M	90006972	N				•	•		
5	ACLUH MB W8S I7-4500U 2G 1000M	90006973	N				•	•		
5	ACLUH MB I5-4200U 2G 1000M	90006974	N				•	•		
5	ACLUH MB W8P I5-4200U 2G 1000M	90006975	N				•	•		
5	ACLUH MB W8S I5-4200U 2G 1000M	90006976	N				•	•		
5	ACLUH MB I3-4100U 2G 1000M	90006977	N				•	•		
5	ACLUH MB W8P I3-4100U 2G 1000M	90006978	N				•	•		
5	ACLUH MB W8S I3-4100U 2G 1000M	90006979	N				•	•		
5	ACLUH MB I3-4010U 2G 1000M	90006980	N				•	•		
5	ACLUH MB W8P I3-4010U 2G 1000M	90006981	N				•	•		
5	ACLUH MB W8S I3-4010U 2G 1000M	90006982	N				•	•		
5	ACLUH MB I3-4005U 2G 1000M	90006983	N				•	•		
5	ACLUH MB W8P I3-4005U 2G 1000M	90006984	N				•	•		
5	ACLUH MB W8S I3-4005U 2G 1000M	90006985	N				•	•		
5	ACLUH MB 3558U 2G 1000M	90006986	N				•	•		
5	ACLUH MB W8P 3558U 2G 1000M	90006987	N				•	•		
5	ACLUH MB W8S 3558U 2G 1000M	90006988	N				•	•		
5	ACLUH MB 2957U 2G 1000M	90006989	N				•	•		
5	ACLUH MB W8P 2957U 2G 1000M	90006990	N				•	•		
5	ACLUH MB W8S 2957U 2G 1000M	90006991	N				•	•		
5	ACLUH MB DIS I7-4500 GT 2G	90007196	N					•		
5	ACLUH MB DIS I5-4200 GT 2G	90007197	N					•		
5	ACLUH MB DIS I3-4100 GT 2G	90007198	N					•		
5	ACLUH MB DIS I3-4010 GT 2G	90007199	N					•		
5	ACLUH MB DIS I3-4005 GT 2G	90007200	N					•		
5	ACLUH MB DIS 3558 GT 2G	90007201	N					•		
5	ACLUH MB DIS 2957 GT 2G	90007202	N					•		
5	ACLUH MB DIS I7-4500 GT 4G	90007203	N					•		
5	ACLUH MB DIS I5-4200 GT 4G	90007204	N					•		
5	ACLUH MB DIS I3-4100 GT 4G	90007205	N					•		
5	ACLUH MB DIS I3-4010 GT 4G	90007206	N					•		
5	ACLUH MB DIS I3-4005 GT 4G	90007207	N					•		
5	ACLUH MB DIS 3558 GT 4G	90007208	N					•		
5	ACLUH MB DIS 2957 GT 4G	90007209	N					•		
5	ACLUH MB W8S DIS I7-4500 GT 2G	90007210	N					•		
5	ACLUH MB W8S DIS I5-4200 GT 2G	90007211	N					•		
5	ACLUH MB W8S DIS I3-4100 GT 2G	90007212	N					•		
5	ACLUH MB W8S DIS I3-4010 GT 2G	90007213	N					•		
5	ACLUH MB W8S DIS I3-4005 GT 2G	90007214	N					•		
5	ACLUH MB W8S DIS 3558 GT 2G	90007215	N					•		

Table 4. Parts list—Overall (continued)

No.	FRU	FRU no.	CRU ID.	G50-30	G50-45	G50-70	G50-70m	Z50-70	Z50-75	G50-80
5	ACLU B MB W8S DIS 2957 GT 2G	90007216	N					•		
5	ACLU B MB W8S DIS I7-4500 GT 4G	90007217	N					•		
5	ACLU B MB W8S DIS I5-4200 GT 4G	90007218	N					•		
5	ACLU B MB W8S DIS I3-4100 GT 4G	90007219	N					•		
5	ACLU B MB W8S DIS I3-4010 GT 4G	90007220	N					•		
5	ACLU B MB W8S DIS I3-4005 GT 4G	90007221	N					•		
5	ACLU B MB W8S DIS 3558 GT 4G	90007222	N					•		
5	ACLU B MB W8S DIS 2957 GT 4G	90007223	N					•		
5	ACLU B MB W8P DIS I7-4500 GT 2G	90007224	N					•		
5	ACLU B MB W8P DIS I5-4200 GT 2G	90007225	N					•		
5	ACLU B MB W8P DIS I3-4100 GT 2G	90007226	N					•		
5	ACLU B MB W8P DIS I3-4010 GT 2G	90007227	N					•		
5	ACLU B MB W8P DIS I3-4005 GT 2G	90007228	N					•		
5	ACLU B MB W8P DIS 3558 GT 2G	90007229	N					•		
5	ACLU B MB W8P DIS 2957 GT 2G	90007230	N					•		
5	ACLU B MB W8P DIS I7-4500 GT 4G	90007231	N					•		
5	ACLU B MB W8P DIS I5-4200 GT 4G	90007232	N					•		
5	ACLU B MB W8P DIS I3-4100 GT 4G	90007233	N					•		
5	ACLU B MB W8P DIS I3-4010 GT 4G	90007234	N					•		
5	ACLU B MB W8P DIS I3-4005 GT 4G	90007235	N					•		
5	ACLU B MB W8P DIS 3558 GT 4G	90007236	N					•		
5	ACLU B MB W8P DIS 2957 GT 4G	90007237	N					•		
5	L Z50-75 FX-7500 UMA	5B20F66800	N						•	
5	L Z50-75 W8S FX-7500 UMA	5B20F66793	N						•	
5	L Z50-75 W8P FX-7500 UMA	5B20F66781	N						•	
5	L Z50-75 A10-7300 UMA	5B20F66774	N						•	
5	L Z50-75 W8S A10-7300 UMA	5B20F66806	N						•	
5	L Z50-75 W8P A10-7300 UMA	5B20F66798	N						•	
5	L Z50-75 A8-7100 UMA	5B20F66789	N						•	
5	L Z50-75 W8S A8-7100 UMA	5B20F66792	N						•	
5	L Z50-75 W8P A8-7100 UMA	5B20F66785	N						•	
5	L Z50-75 FX-7500 DIS 2G	5B20F66778	N						•	
5	L Z50-75 W8S FX-7500 DIS 2G	5B20F66807	N						•	
5	L Z50-75 W8P FX-7500 DIS 2G	5B20F66799	N						•	
5	L Z50-75 A10-7300 DIS 2G	5B20F66791	N						•	
5	L Z50-75 W8S A10-7300 DIS 2G	5B20F66782	N						•	
5	L Z50-75 W8P A10-7300 DIS 2G	5B20F66775	N						•	
5	L Z50-75 A8-7100 DIS 2G	5B20F66802	N						•	
5	L Z50-75 W8S A8-7100 DIS 2G	5B20F66795	N						•	
5	L Z50-75 W8P A8-7100 DIS 2G	5B20F66787	N						•	
5	MBLG50-80NOK 3205U M330 2G1000	5B20H14465	N							•
5	MBLG50-80W8S 3205U M330 2G1000	5B20H14399	N							•
5	MBLG50-80W8P 3205U M330 2G1000	5B20H14426	N							•
5	MBLG50-80NOK 3205U M230 2G1000	5B20H14412	N							•
5	MBLG50-80W8S 3205U M230 2G1000	5B20H14455	N							•
5	MBLG50-80W8P 3205U M230 2G1000	5B20H14374	N							•

Table 4. Parts list—Overall (continued)

No.	FRU	FRU no.	CRU ID.	G50-30	G50-45	G50-70	G50-70m	Z50-70	Z50-75	G50-80
5	MBLG50-80NOK 3205U UMA 1000	5B20H14384	N							•
5	MBLG50-80W8S 3205U UMA 1000	5B20H14424	N							•
5	MBLG50-80W8P 3205U UMA 1000	5B20H14375	N							•
5	MBLG50-80NOK 3755U M330 2G1000	5B20H14409	N							•
5	MBLG50-80W8S 3755U M330 2G1000	5B20H14438	N							•
5	MBLG50-80W8P 3755U M330 2G1000	5B20H14466	N							•
5	MBLG50-80NOK 3755U M230 2G1000	5B20H14440	N							•
5	MBLG50-80W8S 3755U M230 2G1000	5B20H14385	N							•
5	MBLG50-80W8P 3755U M230 2G1000	5B20H14406	N							•
5	MBLG50-80NOK 3755U UMA 1000	5B20H14444	N							•
5	MBLG50-80W8S 3755U UMA 1000	5B20H14383	N							•
5	MBLG50-80W8P 3755U UMA 1000	5B20H14436	N							•
5	MBLG50-80NOK 3805U M330 2G1000	5B20H14441	N							•
5	MBLG50-80W8S 3805U M330 2G1000	5B20H14389	N							•
5	MBLG50-80W8P 3805U M330 2G1000	5B20H14425	N							•
5	MBLG50-80NOK 3805U M230 2G1000	5B20H14468	N							•
5	MBLG50-80W8S 3805U M230 2G1000	5B20H14405	N							•
5	MBLG50-80W8P 3805U M230 2G1000	5B20H14430	N							•
5	MBLG50-80NOK 3805U UMA 1000	5B20H14454	N							•
5	MBLG50-80W8S 3805U UMA 1000	5B20H14390	N							•
5	MBLG50-80W8P 3805U UMA 1000	5B20H14446	N							•
5	MBLG50-80NOKI3-5005UM330 2G1000	5B20H14460	N							•
5	MBLG50-80W8SI3-5005UM330 2G1000	5B20H14423	N							•
5	MBLG50-80W8PI3-5005UM330 2G1000	5B20H14462	N							•
5	MBLG50-80NOKI3-5005UM230 2G1000	5B20H14369	N							•
5	MBLG50-80W8SI3-5005UM230 2G1000	5B20H14415	N							•
5	MBLG50-80W8PI3-5005UM230 2G1000	5B20H14434	N							•
5	MBLG50-80NOK I3-5005U UMA 1000	5B20H14417	N							•
5	MBLG50-80W8S I3-5005U UMA 1000	5B20H14461	N							•
5	MBLG50-80W8P I3-5005U UMA 1000	5B20H14408	N							•
5	MBLG50-80NOKI3-5010UM330 2G1000	5B20H14429	N							•
5	MBLG50-80W8SI3-5010UM330 2G1000	5B20H14473	N							•
5	MBLG50-80W8PI3-5010UM330 2G1000	5B20H14392	N							•
5	MBLG50-80NOKI3-5010UM230 2G1000	5B20H14403	N							•
5	MBLG50-80W8SI3-5010UM230 2G1000	5B20H14448	N							•
5	MBLG50-80W8PI3-5010UM230 2G1000	5B20H14470	N							•
5	MBLG50-80NOK I3-5010U UMA 1000	5B20H14411	N							•
5	MBLG50-80W8S I3-5010U UMA 1000	5B20H14456	N							•
5	MBLG50-80W8P I3-5010U UMA 1000	5B20H14401	N							•
5	MBLG50-80NOKI5-5200UM330 2G1000	5B20H14394	N							•
5	MBLG50-80W8SI5-5200UM330 2G1000	5B20H14432	N							•
5	MBLG50-80W8PI5-5200UM330 2G1000	5B20H14463	N							•
5	MBLG50-80NOKI5-5200UM230 2G1000	5B20H14437	N							•
5	MBLG50-80W8SI5-5200UM230 2G1000	5B20H14373	N							•

Table 4. Parts list—Overall (continued)

No.	FRU	FRU no.	CRU ID.	G50-30	G50-45	G50-70	G50-70m	Z50-70	Z50-75	G50-80
5	MBLG50-80W8PI5-5200UM230 2G1000	5B20H14397	N							•
5	MBLG50-80NOK I5-5200U UMA 1000	5B20H14379	N							•
5	MBLG50-80W8S I5-5200U UMA 1000	5B20H14421	N							•
5	MBLG50-80W8P I5-5200U UMA 1000	5B20H14371	N							•
5	MBLG50-80NOKI7-5500UM330 2G1000	5B20H14427	N							•
5	MBLG50-80W8SI7-5500UM330 2G1000	5B20H14467	N							•
5	MBLG50-80W8PI7-5500UM330 2G1000	5B20H14391	N							•
5	MBLG50-80NOKI7-5500UM230 2G1000	5B20H14380	N							•
5	MBLG50-80W8SI7-5500UM230 2G1000	5B20H14431	N							•
5	MBLG50-80W8PI7-5500UM230 2G1000	5B20H14445	N							•
5	MBLG50-80NOK I7-5500U UMA 1000	5B20H14450	N							•
5	MBLG50-80W8S I7-5500U UMA 1000	5B20H14388	N							•
5	MBLG50-80W8P I7-5500U UMA 1000	5B20H14443	N							•
5	MBLG50-80NOK 3205U M330 1G1000	5B20H14377	N							•
5	MBLG50-80W8S 3205U M330 1G1000	5B20H14402	N							•
5	MBLG50-80W8P 3205U M330 1G1000	5B20H14428	N							•
5	MBLG50-80NOK 3205U M230 1G1000	5B20H14451	N							•
5	MBLG50-80W8S 3205U M230 1G1000	5B20H14398	N							•
5	MBLG50-80W8P 3205U M230 1G1000	5B20H14413	N							•
5	MBLG50-80NOK 3755U M330 1G1000	5B20H14447	N							•
5	MBLG50-80W8S 3755U M330 1G1000	5B20H14370	N							•
5	MBLG50-80W8P 3755U M330 1G1000	5B20H14396	N							•
5	MBLG50-80NOK 3755U M230 1G1000	5B20H14418	N							•
5	MBLG50-80W8S 3755U M230 1G1000	5B20H14471	N							•
5	MBLG50-80W8P 3755U M230 1G1000	5B20H14381	N							•
5	MBLG50-80NOK 3805U M330 1G1000	5B20H14414	N							•
5	MBLG50-80W8S 3805U M330 1G1000	5B20H14442	N							•
5	MBLG50-80W8P 3805U M330 1G1000	5B20H14469	N							•
5	MBLG50-80NOK 3805U M230 1G1000	5B20H14386	N							•
5	MBLG50-80W8S 3805U M230 1G1000	5B20H14435	N							•
5	MBLG50-80W8P 3805U M230 1G1000	5B20H14453	N							•
5	MBLG50-80NOKI3-5005UM330 1G1000	5B20H14382	N							•
5	MBLG50-80W8SI3-5005UM330 1G1000	5B20H14407	N							•
5	MBLG50-80W8PI3-5005UM330 1G1000	5B20H14433	N							•
5	MBLG50-80NOKI3-5005UM230 1G1000	5B20H14458	N							•
5	MBLG50-80W8SI3-5005UM230 1G1000	5B20H14410	N							•
5	MBLG50-80W8PI3-5005UM230 1G1000	5B20H14420	N							•
5	MBLG50-80NOKI3-5010UM330 1G1000	5B20H14457	N							•
5	MBLG50-80W8SI3-5010UM330 1G1000	5B20H14376	N							•
5	MBLG50-80W8PI3-5010UM330 1G1000	5B20H14400	N							•
5	MBLG50-80NOKI3-5010UM230 1G1000	5B20H14439	N							•
5	MBLG50-80W8SI3-5010UM230 1G1000	5B20H14378	N							•
5	MBLG50-80W8PI3-5010UM230 1G1000	5B20H14387	N							•
5	MBLG50-80NOKI5-5200UM330 1G1000	5B20H14422	N							•

Table 4. Parts list—Overall (continued)

No.	FRU	FRU no.	CRU ID.	G50-30	G50-45	G50-70	G50-70m	Z50-70	Z50-75	G50-80
5	MBLG50-80W8SI5-5200UM330 1G1000	5B20H14452	N							•
5	MBLG50-80W8PI5-5200UM330 1G1000	5B20H14393	N							•
5	MBLG50-80NOKI5-5200UM230 1G1000	5B20H14404	N							•
5	MBLG50-80W8SI5-5200UM230 1G1000	5B20H14449	N							•
5	MBLG50-80W8PI5-5200UM230 1G1000	5B20H14459	N							•
5	MBLG50-80NOKI7-5500UM330 1G1000	5B20H14395	N							•
5	MBLG50-80W8SI7-5500UM330 1G1000	5B20H14419	N							•
5	MBLG50-80W8PI7-5500UM330 1G1000	5B20H14464	N							•
5	MBLG50-80NOKI7-5500UM230 1G1000	5B20H14372	N							•
5	MBLG50-80W8SI7-5500UM230 1G1000	5B20H14416	N							•
5	MBLG50-80W8PI7-5500UM230 1G1000	5B20H14472	N							•
6	ACLU2 ODD Board W/Cable	90005944	N	•		•	•	•	•	•
6	ODD Board L G50-45	5C50F77234	N		•					
7	ACLU9 Thermal UMA	90205539	N	•						
7	L G40-45 DIS	5H40F77279	N		•				•	
7	ACLU1 HeatSink DIS	90205114	N			•				
7	ACLU1 HeatSink UMA	90205115	N		•	•		•	•	
7	ACLU9 Heatsink DIS	90205317	N				•	•		
7	Heatsink L G40-80 DIS	5H40H12570	N							•
7	Heatsink L G40-80 UMA	5H40H12606	N							•
8	ACLU1 Fan	90205116	*		•	•	•	•	•	•
9	ACLU2 USB&Audio Board W/Cable	90005943	N	•		•	•	•	•	
9	USB&Audio Board L G50-45 W/Cable	5C50F77221	N		•					
9	USB&Audio Board L G50-80	5C50H19449	N							•
10	ACLU2 Speaker L+R	90205233	N			•				
11	HDD, ST320LT012 6G 7mm 5.4K 320G HDD	16200384	*	•	•	•	•	•	•	•
11	HDD, WD3200LPCX-24C6HT0 6G 7mm 5.4K 320G HDD	16200551	*	•	•	•	•	•	•	•
11	HDD, HTS545032A7E660 6G 7mm 5.4K 320G HDD	16200405	*	•	•	•	•	•	•	•
11	HDD, TSB MQ01ABF032 6G 7mm 5.4K 320G HDD	16200434	*	•	•	•	•	•	•	•
11	HDD, ST500LT012 6G 7mm 5.4K 500G HDD	16200383	*	•	•	•	•	•	•	•
11	HDD, WD5000LPCX-24C6HT0 6G 7mm 5.4K 500G HDD	16200395	*	•	•	•	•	•	•	•
11	HDD, HTS545050A7E660 6G 7mm 5.4K 500G HDD	16200404	*	•	•	•	•	•	•	•
11	HDD, TSB MQ01ABF050 6G 7mm 5.4K 500G HDD	16200433	*	•	•	•	•	•	•	•
11	HDD, ST1000LM024 6G 9.5mm 5.4K 1T HDD	16200385	*	•	•	•	•	•	•	•
11	HDD, WD10JPCX-24UE4T0 6G 9.5mm 5.4K 1T HDD	16200393	*	•	•	•	•	•	•	•
11	HDD, TSB MQ01ABD100 6G 9.5mm 5.4K 1T HDD	16200429	*	•	•	•	•	•	•	•

Table 4. Parts list—Overall (continued)

No.	FRU	FRU no.	CRU ID.	G50-30	G50-45	G50-70	G50-70m	Z50-70	Z50-75	G50-80
11	HDD, HTS541010A9E680 6G 9.5mm 5.4K 1T HDD	16200400	*	•	•	•	•	•	•	•
11	HDD, ST500LM000 6G 7mm 500G+8G SSHD	16200391	*	•	•	•	•	•	•	•
11	HDD, ST1000LM014 9.5mm 1T+8G 5400rpm SSHD	16200389	*	•	•	•	•	•	•	•
12	RAM, SS M471B5173QH0-YK0 4GB DDR3L 1600 (new)	11202079	*	•	•	•	•	•	•	•
12	RAM, Hyn HMT451S6AFR8A-PB DDR3L 1600 4GB	11201300	*	•	•	•	•	•	•	•
12	RAM, RMT3170ME68F9F-1600 4GB DDR3L 1600(MC)	11202302	*	•	•	•	•	•	•	•
12	RAM, MC MT8KTF51264HZ-1G6E1 4GB DDR3L 1600	11202125	*	•	•	•	•	•	•	•
12	RAM, BM471B5173DB0-YK0 25nm 4GB DDR3L 1600	11202081	*	•	•	•	•	•	•	•
12	RAM, SK HMT451S6BFR8A-PB/RD 4GB DDR3L 1600	11202706	*	•	•	•	•	•	•	•
12	RAM, M471B1G73QH0-YK0 35nmQ 8GB DDR3L 1600	11202080	*	•	•	•	•	•	•	•
12	RAM, Hyn HMT41GS6AFR8A-PB DDR3L 1600 8GB	11201301	*	•	•	•	•	•	•	•
12	RAM, RMT3160ME68FAF-1600 8GB DDR3L 1600	11202450	*	•	•	•	•	•	•	•
12	RAM, Mic MT16KTF1G64HZ-1G6E1 DDR3L 1600 8GB	11201304	*	•	•	•	•	•	•	•
12	RAM, M471B1G73DB0-YK0 25nm 8GB DDR3L 1600	11202082	*	•	•	•	•	•	•	•
12	RAM, SK HMT41GS6BFR8A-PB/RD 8GB DDR3L 1600	11202707	*	•	•	•	•	•	•	•
13	WirelessLan_Non_Intel, Ltn NFA335 1x1BN+BT4.0 PCIE M.2 WLAN	20200558	*	•	•	•	•	•	•	•
13	WirelessLan_Non_Intel, Cbt BCM43142 1x1BN+BT4.0 PCIE M.2 WLAN	20200557	*	•	•	•	•	•	•	•
13	WirelessLan_Non_Intel, Cbt RTL8723BE 1x1BN+BT4.0 PCIE M.2 WLAN	20200570	*	•	•	•	•	•	•	•
13	WirelessLan_Non_Intel, Ltn NFA345 1x1AC+BT4.0 PCIE M.2 WLAN	20200579	*	•	•	•	•	•	•	•
13	WirelessLan_Non_Intel, Cbt BCM43162 1x1AC+BT4.0 PCIE M.2 WLAN	20200573	*	•	•	•	•	•	•	•
13	WirelessLan_Intel, Intel 3160 1x1AC+BT PCIE NGFF WLAN	20200418	*	•	•	•	•	•	•	•
14	ACLU1 Dummy ODD	90205226	*	•	•	•	•	•	•	•
14	ODD, HLDS GUA0N 9.0 Rambo ODD	25215010	*	•	•	•	•	•	•	•
14	ODD, PLDS DA-8A5SH Slim SATA Tray Rambo	25213110	*	•	•	•	•	•	•	•
14	ODD, QSI UJ8FBS 9.0 Rambo ODD	25215312	*	•	•	•	•	•	•	•
14	ODD, TSST SU-228FB 9.0 Rambo ODD	25215832	*	•	•	•	•	•	•	•
15	ACLU2 Lower Case Black	90205217	N	•	•	•	•	•	•	•

Table 4. Parts list—Overall (continued)

No.	FRU	FRU no.	CRU ID.	G50-30	G50-45	G50-70	G50-70m	Z50-70	Z50-75	G50-80	
15	ACLUH Lower Case White H W/Speaker L+R	90205323	N					•	•		
16	ACLU2 Thermal Door Black	90205218	*	•	•	•	•	•	•	•	
16	ACLUH Thermal Door White H	90205324	*					•	•		
17	Battery, G5XXS SY L12S4E01 14.4V41Wh 4cell bty	121500171	*	•	•	•	•	•	•	•	
17	Battery, G5XXS SP/L L12M4E01 14.88V41Wh 4cell bty	121500172	*	•	•	•	•	•	•	•	
17	Battery, G5XXS LG L12L4E01 14.8V41Wh 4cell bty	121500173	*	•	•	•	•	•	•	•	
17	Battery, G5XXS SY L12S4A02 14.4V32Wh 4cell bty	121500174	*	•	•	•	•	•	•	•	
17	Battery, G5XXS SP/L L12M4A02 14.4V32Wh 4cell bty	121500175	*	•	•	•	•	•	•	•	
17	Battery, G5XXS LG L12L4A02 14.4V32Wh 4cell bty	121500176	*	•	•	•	•	•	•	•	
—	AC adapter (see “AC adapters” on page 87).										

LCD FRUs

In Lenovo G50-30/G50-45/G50-70/G50-70m/Z50-70/Z50-75/G50-80, there are following types of LCDs.

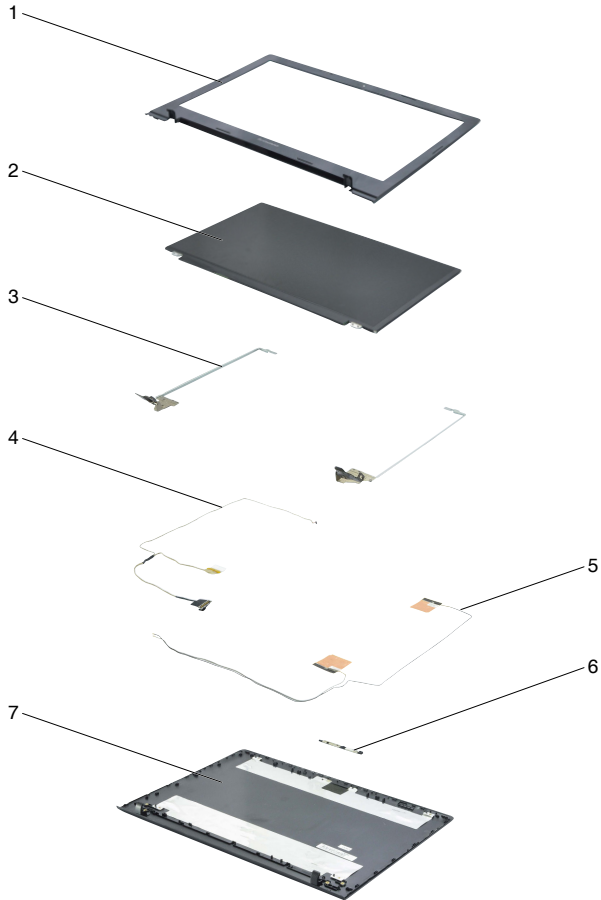


Table 5. Parts list—15.6-in. HD LED

No.	FRU	FRU no.	CRU ID.	G50-30	G50-45	G50-70	G50-70m	Z50-70	Z50-75	G50-80
1	ACLU2 LCD Bezel Black	90205215	N	•	•	•				•
1	ACLUH LCD Bezel Black M	90205319	N					•	•	•
1	ACLUH LCD Bezel Silver H	90205320	N					•	•	
2	LGD LP156WH3-TPSH HD G F LED1 NB LCD	18201668	N	•	•	•	•	•	•	•
2	AUO B156XTN04.0 4A HD G F LED1 NB LCD	18201669	N	•	•	•	•	•	•	•
2	CMI N156BGE-EB1 C2 HD G S LED1 NB LCD	18201670	N	•	•	•	•	•	•	•
3	ACLU2 Hinge L+R	90205235	N	•	•	•	•	•	•	•
4	ACLU2 LCD Cable DIS	90205236	N			•				
4	ACLU2 LCD Cable UMA	90205237	N			•				
5	ACLU2 Antenna WLAN Main+AUX	90205234	N			•				
6	ACLU1 Camera Board 1M	90005906	N	•	•	•				•
6	ACLU1 Camera Board 0.3M	90005907	N	•	•	•				•
6	ACLUG Camera Board 720P	90006949	N				•	•	•	
7	ACLU2 LCD Cover Black DIS	90205213	N	•	•	•	•	•	•	•
7	ACLU2 LCD Cover Black UMA	90205214	N			•		•		•
7	ACLU2 LCD Cover White DIS	90205395	N	•	•			•		•
7	ACLU2 LCD Cover White UMA	90205396	N					•		•
7	ACLU2 LCD Cover SV DIS	90205397	N					•		
7	ACLU2 LCD Cover SV UMA	90205398	N					•		
7	ACLU2 LCD Cover White UMA	90205399	N					•		
7	ACLUH LCD Cover White W/Antenna/LCDCable DIS	90205318	N				•	•		
7	ACLU0 LCD Cover DIS RED	90205545	N	•	•					•
7	ACLU0 LCD Cover DIS SV	90205547	N	•	•					•
7	ACLU0 LCD Cover Red UMA	90205546	N							•
7	ACLU0 LCD Cover Silver UMA	90205548	N							•

Keyboard

Table 6. Parts list—Keyboard

Language		P/N	CRU ID.	G50-30	G50-45	G50-70	G50-70m	Z50-70	Z50-75	G50-80
Chicony	English	25214725								
	U.K. English	25214726								
	Italian	25214727								
	Spanish	25214728								
	Turkish	25214729								
	Thai	25214730								
	Portuguese	25214731								
	Latin	25214732								
	Canadian English&French	25214733								
	Korean	25214734								
	Traditional Chinese	25214735								
	Russian	25214736								
	Japanese	25214741								
	French	25214737								
	German	25214738								
	Arabic	25214739								
	Brazilian	25214740								
	Dutch	25214742								
	Greek	25214743								
	Hebrew	25214744								
	Hungarian	25214745								
	Four Nordic countries	25214746		**	•	•	•	•	•	•
	Belgian	25214747								
	Icelandic	25214748								
	Slovenian	25214749								
	Swiss	25214750								
	International English	25214751								
	Czechoslovakian	25214752								
Bulgarian	25214753									
Indian	25214754									
Sunrex	English	25214755								
	U.K. English	25214756								
	Italian	25214757								
	Spanish	25214758								
	Turkish	25214759								
	Thai	25214760								
	Portuguese	25214761								
	Latin	25214762								
	Canadian English&French	25214763								
	Korean	25214764								
	Traditional Chinese	25214765								
	Russian	25214766								
	French	25214767								
German	25214768									

Table 6. Parts list—Keyboard (continued)

Language		P/N	CRU ID.	G50-30	G50-45	G50-70	G50-70m	Z50-70	Z50-75	G50-80
Sunrex	Arabic	25214769								
	Brazilian	25214770								
	Japanese	25214771								
	Dutch	25214772								
	Greek	25214773								
	Hebrew	25214774								
	Hungarian	25214775								
	Four Nordic countries	25214776								
	Belgian	25214777								
	Icelandic	25214778								
	Slovenian	25214779								
	Swiss	25214780								
	International English	25214781								
	Czechoslovakian	25214782								
	Bulgarian	25214783								
Indian	25214784									
Liteon	English	25214785								
	U.K. English	25214786								
	Italian	25214787								
	Spanish	25214788								
	Turkish	25214789								
	Thai	25214790								
	Portuguese	25214791	**	•	•	•	•	•	•	•
	Latin	25214792								
	Canadian English&French	25214793								
	Korean	25214794								
	Traditional Chinese	25214795								
	Russian	25214796								
	French	25214797								
	German	25214798								
	Arabic	25214799								
	Brazilian	25214800								
	Japanese	25214801								
	Dutch	25214802								
	Greek	25214803								
	Hebrew	25214804								
	Hungarian	25214805								
Four Nordic countries	25214806									
Belgian	25214807									
Icelandic	25214808									
Slovenian	25214809									
Swiss	25214810									
International English	25214811									
Czechoslovakian	25214812									
Bulgarian	25214813									
Indian	25214814									

Miscellaneous parts

Table 7. Parts list—Miscellaneous parts

FRU	FRU no.	CRU ID.	G50-30	G50-45	G50-70	G50-70m	Z50-70	Z50-75	G50-80	
System miscellaneous parts:										
• (a) ACLU1 HDD Bracket L+R	90205110	N	•	•	•	•	•	•	•	
• (b) ACLU1 ODD Bracket	90205111		•	•	•	•	•		•	
• (c) ACLU1 ODD Bezel Tray-in	90205109		•	•	•				•	
• (c) ACLUG ODD Bezel Black M	90205315					•	•	•		
• (c) ACLUG ODD Bezel White H	90205316					•	•			
• (c) ACLUA ODD Bezel BK	90205394						•			
Cable miscellaneous parts:										
• (d) ACLU1 DC-IN Cable DIS	90205112		•	•	•	•	•	•	•	
• (d) ACLU1 DC-IN Cable UMA	90205113				•		•		•	
Note: Italicized letters in parentheses are references to the exploded view in "Overall" on page 71.										

AC adapters

Table 8. Parts list—3-pin AC adapters

FRU	P/N	CRU ID.	G50-30	G50-45	G50-70	G50-70m	Z50-70	Z50-75	G50-80
Delta ADLX45NDC3A 20V2.25A adapter	36200245	*	•	•	•	•	•	•	•
Liteon ADLX45NLC3A 20V2.25A adapter	36200246	*	•	•	•	•	•	•	•
Chicony ADLX45NCC3A 20V2.25A adapter	36200247	*	•	•	•	•	•	•	•
Delta ADLX45NDC3A 20V2.25A adap(CMN)	36200602	*	•	•	•	•	•	•	•
Liteon ADLX45NLC3A 20V2.25A adap(CMN)	36200606	*	•	•	•	•	•	•	•
Chicony ADLX45NCC3A 20V2.25A adap(CMN)	36200610	*	•	•	•	•	•	•	•
Delta ADLX65NDC3A 20V3.25A adapter	36200249	*	•	•	•	•	•	•	•
Liteon ADLX65NLC3A 20V3.25A adapter	36200251	*	•	•	•	•	•	•	•
Chicony ADLX65NCC3A 20V3.25A adapter	36200253	*	•	•	•	•	•	•	•
Liteon ADLX65NLC3A 20V3.25A adap(CMN)	36200607	*	•	•	•	•	•	•	•
Chicony ADLX65NCC3A 20V3.25A adap(CMN)	36200611	*	•	•	•	•	•	•	•

Screws

Table 9. Parts list—screws

FRU	P/N	CRU ID.	G50-30	G50-45	G50-70	G50-70m	Z50-70	Z50-75	G50-80
ACLU1 Screw Panel-A/MB-D/IO BD-D/Thm-MB	90205117	N	•	•	•	•	•	•	•
Vienna SCREW M M 3.0D 3.0L K 4.0D 0.4T	90204955	N	•	•	•	•	•	•	•
ACLU1 Screw D-C/D-KB/ODD BKT-D-MB-KB/FAN	90205118	N	•	•	•	•	•	•	•
ACLU1 Screw Hinge-D	90205119	N	•	•	•	•	•	•	•
VIUU4 Screw 2D 2.5LK 4.5D 0.5T ZK NL+	90202836	N	•	•	•	•	•	•	•
AILZA Screw M M 2D 1.5+3.4L K 3.5D 1T	90203989	N	•	•	•	•	•	•	•
ACLU1 Screw D-SYS ID Hole/Thm Door-SYS	90205222	N	•	•	•	•	•	•	•
AILZC SCREW M M 2.5D 3.5L K 5.3D	90204294	N	•	•		•	•	•	•

Power cords

A Lenovo power cord for a specific country or region is usually available only in that country or region:

Table 10. Parts list—power cords

Region	P/N	CRU ID.	G50-30	G50-45	G50-70	G50-70m	Z50-70	Z50-75	G50-80
CCC 3PIN • LINETEK PC323+RVV300/300+LS15 1m	145000600								
Argentina 3PIN • LINETEK LS15+H03VV-F+LP39 1m	145000599								
Danmark 3PIN • LINETEK LS15+H03VV-F+LP-38 1m	145000598								
Switzerland 3PIN • LINETEK LS15+H03VV-F+LP-37 1m	145000597								
Brazil 3PIN • LINETEK LS15 H03VV-F LP26A 1m	145000596								
Israel 3PIN • LINETEK LS15+H03VV-F+LP-41 1m	145000595								
UL 3PIN • LINETEK LP-30B + SPT-2 + LS15 1m	145000594								
UK 3PIN • LINETEK LP-61L+ H03VV-F+ LS15 1m	145000593								
Indian 3PIN • LINETEK PE-361+ H05VV-F+ LS15 1m	145000592								
Italy 3PIN • LINETEK LS15+H03VV-F+PE-336 1m	145000591	*	•	•	•	•	•	•	•
Korea 3PIN • LINETEK LS15+H05VV-F+LP-E04A 1m	145000590								
Australia 3PIN • LINETEK LS15+H03VV-F+LP-23A 1m	145000589								
Taiwan 3PIN • LINETEK LS15+VCTF+LP-53 1m	145000588								
Japan 3PIN • LINETEK LS15+VCTF+LP-54 1m	145000587								
Africa 3PIN • LINETEK LS15+H03VV-F+PE-364 1m	145000586								
CE 3PIN • LINETEK LP-34+H03VV-F + LS15 1m	145000585								
CCC 3PIN • Longwell LSG-31+RVV300/300+LS-18 1m	145000568								
Argentina 3PIN • Longwell LP-24+H03VV-F+LS-18 1m	145000567								
Danmark 3PIN • Longwell LP-40+H03VV-F+LS-18 1m	145000566								

Table 10. Parts list—power cords (continued)

Region	P/N	CRU ID.	G50-30	G50-45	G50-70	G50-70m	Z50-70	Z50-75	G50-80
Switzerland 3PIN • Longwell LP-37+H03VV-F+LS-18 1m	145000565								
Brazil 3PIN • Longwell LP-46+H03VV-F+LS-18 1m	145000564								
Israel 3PIN • Longwell LP-41+H03VV-F+LS-18 1m	145000563								
UL 3PIN • Longwell LP-30B+SPT-2 18AWG+LS-18 1m	145000562								
UK 3PIN • Longwell LP-61L+H03VV-F+LS-18 1m	145000561								
Indian 3PIN • Longwell LP-67+BIS+LS-18 1m	145000560								
Italy 3PIN • Longwell LP-22+H03VV-F+LS-18 1m	145000559								
Korea 3PIN • Longwell LP-486+KTLH03VV-F+LS-5 1m	145000558								
Australia 3PIN • Longwell LP-23A+LFC-3R+LS-18 1m	145000557								
Taiwan 3PIN • Longwell LP-71+VCTF+LS-33 1m	145000556								
Japan 3PIN • Longwell LP-54+VCTF+LS-18 1m	145000555								
Africa 3PIN • Longwell LP-39+H03VV-F+LS-18 1m	145000554	*	•	•	•	•	•	•	•
CE 3PIN • Longwell LP-34A+H03VV-F+LS-18 1m	145000553								
CCC 3PIN • VOLEX GB10S3+RVV 300/500+VAC5S 1m	145000538								
UL 3PIN • Volex US15S3+SPT-2 +VAC5S 1m	145000537								
UK 3PIN • VOLEX MP5004+H03VV-F+VAC5S 1m	145000605								
Switzerland 3PIN • VOLEX MP232+H03VV-F+VAC5S 1m	145000524								
Italy 3PIN • VOLEX IT10S3+H03VV-F+VAC5S 1m	145000535								
Denmark 3PIN • VOLEX MP233D+H03VV-F+VAC5S 1m	145000534								
Korea 3PIN • VOLEX M2511+KETI IEC+VAC5S 1m	145000533								
Australia 3PIN • VOLEX AU10S3+H03VV-F+VAC5S 1m	145000532								
Taiwan 3PIN • VOLEX TW15CS3+VCTF+VAC5S 1m	145000531								

Table 10. Parts list—power cords (continued)

Region	P/N	CRU ID.	G50-30	G50-45	G50-70	G50-70m	Z50-70	Z50-75	G50-80
Japan 3PIN • VOLEX VAC5S+VCTF+M755 1m	145000530								
Argentina 3PIN • VOLEX VA2073+H03VV-F+VAC5S 1m	145000528								
Brazil 3PIN • VOLEX CH10S3+H03VV-F+VAC5S 1m	145000527								
Israel 3PIN • VOLEX SI16S3+H03VV-F+VAC5S 1m	145000526								
CE 3PIN • VOLEX M2511+H03VV-F+VAC5S 1m	145000525								
UK • lux 0031+H03VV-F 0.75/3C+0011 1m	145500000								
Europe • lux 0033+H03VV-F 0.75/3C+0011 1m	145500001								
US • lux 0014+SPT-2 60°C 18/3C+0016 1m	145500002								
China • lux 0036+RVV 300/300 0.75/3C+0002 1m	145500003								
Indian • lux 0046+IS694 0.75/3C+0011 1m	145500004								
Japan • lux 0018(E)+VCTF 0.75/3C+0021 1m	145500005	*	•	•	•	•	•	•	•
Australia • lux 0038+H03VV-F 0.75/3C+0011 1m	145500006								
Taiwan • lux 0019+VCTF 0.75/3C+0021 1m	145500007								
Korea • lux 0033+H03VV-F 0.75/3C+0011 1m	145500008								
Italy • lux 0029+H03VV-F 0.75/3C+0011 1m	145500009								
South Africa • lux 0044+H03VV-F 0.75/3C+0011 1m	145500010								
Brazil • lux 0034+H03VV-F 0.75/3C+0011 1m	145500011								
Israel • lux 0041+H03VV-F 0.75/3C+0011 1m	145500012								
Switzerland • lux 0027+H03VV-F 0.75/3C+0011 1m	145500013								
Denmark • lux 0048+H03VV-F 0.75/3C+0011 1m	145500014								
Argentina • lux 0040+H03VV-F 0.75/3C+0011 1m	145500015								

Notices

Lenovo may not offer the products, services, or features discussed in this document in all countries. Consult your local Lenovo representative for information on the products and services currently available in your area. Any reference to a Lenovo product, program, or service is not intended to state or imply that only that Lenovo product, program, or service may be used. Any functionally equivalent product, program, or service that does not infringe any Lenovo intellectual property right may be used instead. However, it is the user's responsibility to evaluate and verify the operation of any other product, program, or service.

Lenovo may have patents or pending patent applications covering subject matter described in this document. The furnishing of this document does not give you any license to these patents.

LENOVO GROUP LTD. PROVIDES THIS PUBLICATION "AS IS" WITHOUT WARRANTY OF ANY KIND, EITHER EXPRESS OR IMPLIED, INCLUDING, BUT NOT LIMITED TO, THE IMPLIED WARRANTIES OF NON-INFRINGEMENT, MERCHANTABILITY OR FITNESS FOR A PARTICULAR PURPOSE. Some jurisdictions do not allow disclaimer of express or implied warranties in certain transactions, therefore, this statement may not apply to you.

This information could include technical inaccuracies or typographical errors. Changes are periodically made to the information herein; these changes will be incorporated in new editions of the publication. Lenovo may make improvements and/or changes in the product(s) and/or the program(s) described in this publication at any time without notice.

The products described in this document are not intended for use in implantation or other life support applications where malfunction may result in injury or death to persons. The information contained in this document does not affect or change Lenovo product specifications or warranties. Nothing in this document shall operate as an express or implied license or indemnity under the intellectual property rights of Lenovo or third parties. All information contained in this document was obtained in specific environments and is presented as an illustration. The result obtained in other operating environments may vary.

Lenovo may use or distribute any of the information you supply in any way it believes appropriate without incurring any obligation to you.

Any references in this publication to non-Lenovo Web sites are provided for convenience only and do not in any manner serve as an endorsement of those Web sites. The materials at those Web sites are not part of the materials for this Lenovo product, and use of those Web sites is at your own risk.

Any performance data contained herein was determined in a controlled environment. Therefore, the result obtained in other operating environments may vary significantly. Some measurements may have been made on development-level systems and there is no guarantee that these measurements will be the same on generally available systems. Furthermore, some measurements may have been estimated through extrapolation. Actual results may vary. Users of this document should verify the applicable data for their specific environment.

Trademarks

The following terms are trademarks or registered trademarks of Lenovo in the United States, other countries, or both.

Lenovo
OneKey

Microsoft and Windows are trademarks of Microsoft Corporation in the United States, other countries, or both.

Other company, products, or service names may be trademarks or service marks of others.