



# Apple Macbook Pro 13" Early 2011 - Mid 2012 Memory Installation Guide



## What will I need?



Clear Workspace



New Memory Module(s)



Screwdriver



To prevent any potential damage from anti static electricity, you should discharge yourself first. This can be done by touching a grounded metal object - such as a radiator.

## Step 1

Make sure the Macbook is powered off and all cables have been disconnected.

## Step 2

Turn your Macbook over and remove the 10 screws that are securing the bottom casing. Remember where each screw came from.



3x 14.4mm

3x 3.5mm

4x 3.5mm Shouldered

### Step 3

Pry the back of the case away from the Macbook.

### Step 4

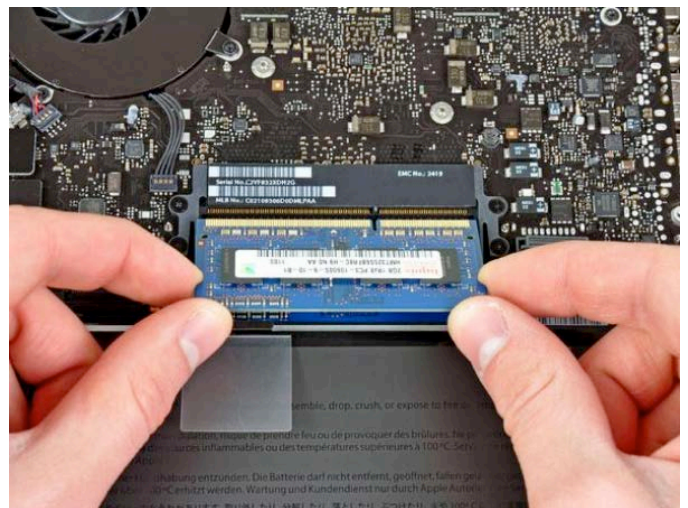
To remove any existing RAM, push the levers on the sides away from the module. The module will then pop out at an angle.



### Step 5

To install the new module, align the notch on the gold part of the module with the notch in the slot. Tilt the module and push firmly and evenly into the slot.

*There will be an audible click when the memory is seated correctly. Don't worry about which way the stickers are facing, as this will differ.*



### Step 6

To reassemble the Macbook, reattach the back panel and replace the 10 screws into their locations. Turn the Macbook on and everything should be running smoothly and faster than before.